



Effect of Using Peptide as a Replacement of Antibiotic Growth Promoters on Pigs: a Systematic Review and Meta-regression

Danung Nur Adli^{1,9,*}, Muhammad Miftakhus Sholikin^{3,9}, Novia Qomariyah^{3,6,9}, Tri Rachmanto Prihambodo^{3,9}, Osfar Sjoftan¹, Cecep Hidayat^{4,9}, Sadarman Sadarman^{3,5,10}, Rizki Amalia Nurfitriani^{7,9}, Anuraga Jayanegara^{2,9}, Rondius Solfaine⁸, Nahrowi Nahrowi²

¹Department of Nutrition and Feed Technology, Faculty of Animal Science, University of Brawijaya, Malang 65145, Indonesia.

²Department of Nutrition and Feed Technology, Faculty of Animal Science, IPB University, Bogor 16680, Indonesia.

³Graduate School, Department of Nutrition and Feed Technology, Faculty of Animal Science, IPB University, Bogor, 16680, Indonesia.

⁴Indonesian Research Institute for Animal Production, Ciawi Bogor 16720, Indonesia.

⁵Department of Animal Science, Sultan Syarif Kasim State Islamic University, Pekanbaru, Indonesia.

⁶Center for Livestock Studies and Development (CLISDEV), Pahlawan Tuanku Tambusai University, 28412, Indonesia.

⁷Department of Animal Science, Politeknik Negeri Jember, Jember, 68121, East Java, Indonesia.

⁸Department of Pathology, Faculty of Veterinary Medicine, Wijaya Kusuma Surabaya University, Surabaya, 60225, Indonesia.

⁹Animal Feed and Nutrition Modelling (AFENUE) Research Group, Faculty of Animal Science, IPB University, Bogor 16680, Indonesia.

¹⁰South Sulawesi Assessment Institute for Agricultural Technology (South Sulawesi AIAT), Makassar 90243, Indonesia.

ARTICLE INFO

Original Research

Received:

02 February 2021

Accepted:

02 March 2021

Keywords:

Meta-regression, Peptide, Pig, Systematic review

ABSTRACT

A systematic review and meta-regression were done to investigate the effect of using peptide as a replacement of antibiotic growth promoters on pig. A dataset was created based on an algorithm for peer-reviewed articles published from 2004 to 2019. The peer-reviewed published articles were evaluated strictly following the eligibility criteria for inclusion. Meta-regression was performed using a non-linear mixed model library provided by R Studio 4.1.1 software. A structure algorithm was constructed using 'magick', 'ggplot', 'ggplot2' and 'cowplot' add-ons to create a meta-regression. In this study, meta-regression between year of publication and number of pigs included in the experiments was associated with growth performance and diarrhea with $p = 0.032$ and $p < 0.163$, respectively. Meanwhile, the source of peptide intercepts for these parameters were 38.33 ($p = 0.052$) and 48.44 ($p = < 0.071$), respectively. The scientific evidence from the meta-analysis based on the in-vivo studies demonstrates that both form and dosage of the anti-microbial have a beneficial effect on pigs.

J. Adv. Vet. Res. (2022), 12 (1), 29-35

Introduction

Antibiotic Growth Promoters (AGPs) has been used worldwide for more than 40 years. Depending on the use of antibiotics in feed, several aspects must be considered including: the relatively expensive cost, the presence of harmful residues that are left because the antibiotics are absorbed in the digestive tract and accumulated in the blood and can create resistant microorganisms in livestock, especially pathogenic microbes such as *Salmonella* sp. and *Escherichia coli* (Sjoftan *et al.*, 2021a; Sjoftan *et al.*, 2021b). With the development of animal industry, including animal husbandry and animal health, some technologies lead to efficient use of production

inputs in livestock businesses that can be applied as a substitute for artificial antibiotics, particularly the technology of the utilization of antimicrobial peptides. This technology has been implemented since the European Union banned antibiotics as feed additives. The ban on antibiotics began in 1997 when Avoparcin was officially banned from its use as an additive to animal feed by the European Union in Denmark (Maron *et al.*, 2013). The prohibition of antibiotics as an additive to animal feed extends to various countries, both in developed and developing countries, including Indonesia. Through the Animal Husbandry and Animal Health Law, Number 18 of 2009 Article 22 Paragraph 4c and Regulation of MOA Number 14/2017, the latest regulations regarding the prohibition of the use of AGPs in animal feed were applied as of January 1, 2018 (Sjoftan and Adli, 2021; Sjoftan *et al.*, 2021c). This prohibition's impact has made many researchers, business actors, industry players, and breeders searching for alternatives to replace antibiotics, one

*Corresponding author: Danung Nur Adli
E-mail address: danungnuradli1994@gmail.com

of which is the peptide.

Peptides are molecules produced by cells in the tissues of living things that act as the body's defense system. The peptide can neutralize endotoxin produced by gram-negative bacteria. Based on the form of administration in pigs, peptide can be classified into a single antimicrobial peptide (SAP) and composite antimicrobial peptide (CAP). SAP is a peptide administered to pigs in a single form with high purity (more than 90%), such as lactoferrin (Wang *et al.*, 2006). CAP is a peptide in the form of a mixture, or a peptide contained in crude extracts of functional proteins, for example, such as protamine-1 in potato protein, crude pig β -defensin 2 extracted from intestinal pig, and a mixture of pig defensin and fly antimicrobial peptide (Kim *et al.*, 2001; Jin *et al.*, 2008b; Ren *et al.*, 2015; Peng *et al.*, 2016). Defensins are classified into three types, i.e. alpha, beta, and theta defensins. The SAP dosage ranges from 0 to 1000 mg/Kg of feed, while CAP ranges between 0 and 75000 mg /Kg of feed. The maintenance period ranges from 1-14 days (phase 1), 15-28 days (phase 2), and 1-28 days (total). The general average for age and initial body weight is 22 days and 6.34 kg. Research conducted by Yoon *et al.*, (2014) and Yoon *et al.*, (2013) show that administration in the form of SAP to piglets was able to improve production performance, intestinal health, improve digestibility, and reduce gram-negative bacteria. Furthermore, it was reported in the studies of Xiao *et al.*, (2013a) and Xiao *et al.*, (2015) that the use of CAP in piglets was able to increase feed conversion, increase the immune system, and reduce organ damage. One method of answering this inconsistent result is to utilize statistical meta-analysis techniques. Therefore, this study aimed to summarize and determine the effect of administering peptides on growth performance in pigs through systematic review and meta-regression studies from various sources of scientific publications.

Materials and methods

Dataset development

Raw data from selected articles were extracted if articles reported the use of an anti-microbial peptide in pig. Peer-reviewed published articles were chosen and carefully evaluated following Systematic Review Center for Laboratory Animal Experimentation (SYRCLÉ) protocols. An algorithm was chosen in order to search peer-reviewed published articles in the following websites:

Science direct (www.sciencedirect.com/); Medline (www.nlm.nih.gov/medline/medline_overview.html); PubMed (<https://pubmed.ncbi.nlm.nih.gov/>) and other scientific publishing platforms. The period set for appropriate published articles was from 2004 to 2019, and the following keywords were used: 'pig', 'performance', 'peptide', and 'survival'. In each article evaluated, we also evaluated reference lists to search for potentially relevant articles that might have been missed during the initial search.

Development of the dataset

Peer-reviewed published articles were selected based on the PICOS (population, intervention, comparison, outcomes, and study selection) model. Criteria for article to be included in data-base were as follows: (a) article was published in a peer-reviewed journal with range 2004-2019, (b) the pig were modern-controlled-trial environment and management, (c) peptide treatment excluded from the database, (e) the articles written consistent in English were considered in studies, (d) The parameters included in these studies were body weight, average daily gain, average daily intake, feed conversion ratio, diarrhea ratio, and survival rate at phase 1, phase 2, and total phase of growth. The database was converted into same unit.

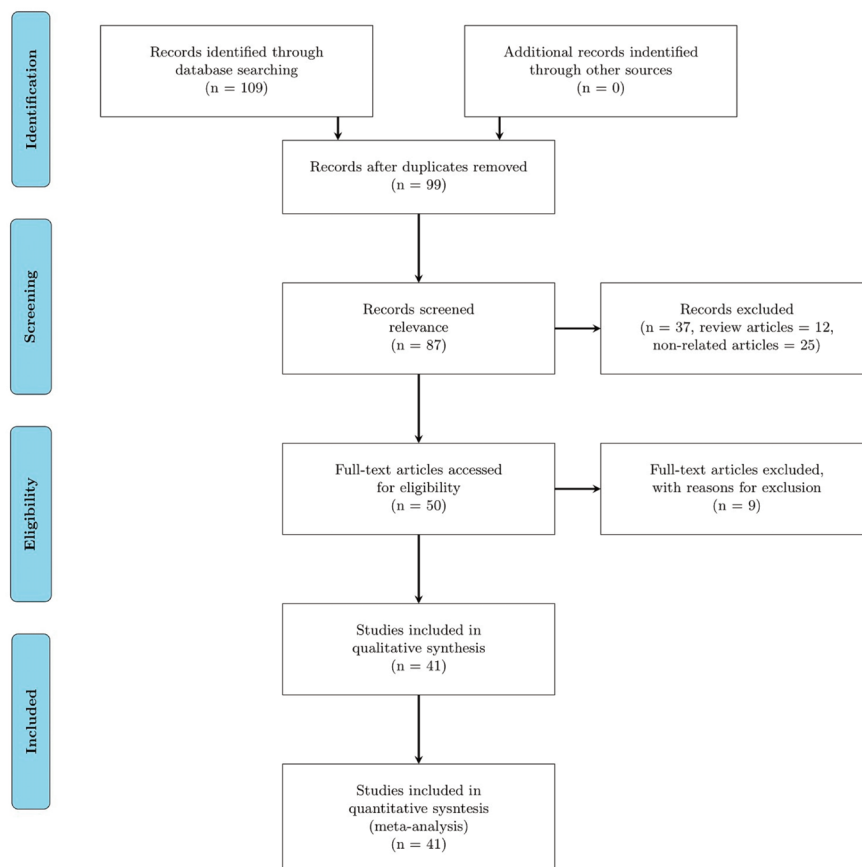


Fig. 1. The diagram of the selection of article followed PRISMA-P (Shamseer *et al.*, 2015)

Likewise, data extraction was completed in accordance with the task analysis to obtain the exact values from graphical data, the relevant figure from the papers were subjected to an online tools WebplotDigitizer method. The final dataset was consisted of 41 in vivo studies. While the summary of the used final dataset is presented in Table 1. The details for the study selection included in meta-analysis are provided in Figure 1.

Data analysis

The development of the studies was taken as the random effects, while the concentrations supplementation were taken as the fixed effect. The mathematical model used were following (Jin et al., 2009; Ren et al., 2015).

$$1) Y_{ij} = \beta_0 + \beta_1 Level_{ij} + Experiment_i + Experiment_i Level_{ij} + e_{ij}$$

$$2) Y_{ij} = \beta_0 + \beta_1 Level_{ij} + \beta_2 Level^2_{ij} + Experiment_i + Experiment_i Level_{ij} + e_{ij}$$

Where: Y_{ijk} = dependent variable, μ = averages all studies,

s_i = randomized effect of experiment- i , τ_j = fixed effect on the factor- j and factor τ , $s_{\tau_{ij}}$ = randomized interaction between i experiment and j experiment from factor of τ , where Y_{ij} = dependent variable; B_0 = overall intercept across all studies (fixed effect); B_1 = linear regression coefficient of Y on X (fixed effect); B_2 = quadratic regression coefficient of Y on X (fixed effect); X_{ij} = value of the continuous predictor variable (peptide levels); s_i = value of random effect of study i ; b_i = random effect of study on the regression coefficient of Y on X in study i ; and e_{ij} = the unexplained residual error.

In the end, we conducted a meta-regression to explore the source of hedges'd in each experimental effect. Meta-regression present relationship and gap between years of publication, number of pig included in the experiments and duration of studies, and source of fiber used as covariates. A meta-regression was performed using the restricted maximum likelihood (REML) (Metareg, R Studio) as follows (Harrer et al., 2019).

Table 1. Studies included in the meta-regression of the effect of anti-microbial peptide on the growth performance of the pig.

No.	Reference	Source of peptide	Form	Dosage	Initial age ¹⁾	Rearing period			IBW
						Phase 1 ²⁾	Phase 2 ²⁾	Total ²⁾	
1	Berding et al. (2016)	Bovine lactoferrin	SAP	0 – 300	2	1 – 15	16 – 30	1 – 30	1.51
2	Boudry et al. (2007)	Bovine colostrum	CAP	0 – 676	21	1 – 15	16 – 21	1 – 21	7.4
3	Boudry et al. (2008)	Bovine lactoferrin	SAP	0 – 320	40	1 – 14	15 – 28	1 – 28	8.33
4	Cutler et al. (2007)	Colicin E1	SAP	0 – 16.5	23	–	–	–	–
5	DeRouche et al. (2004)	Serum immunoglobulin G	CAP	0 – 11,450	17	1 – 14	15 – 24	1 – 24	6.09
6	Huguet et al. (2006)	Bovine colostrum	CAP	0 – 50,000	21	–	–	1 – 35	6.3
7	Huguet et al. (2012)	Bovine colostrum	CAP	0 – 40,000	28	1 – 6	–	–	7.8
8	Jin et al. (2008b)	Potato protein	CAP	0 – 7,500	23	1 – 14	15 – 28	1 – 28	6.42
9	Jin et al. (2008a)	Potato protein	CAP	0 – 7,500	23	1 – 14	15 – 28	1 – 28	7.2
10	Jin et al. (2009)	Refined potato protein	CAP	0 – 600	23	1 – 14	15 – 28	1 – 28	5.96
11	King et al. (2008b)	Bovine colostrum	CAP	0 – 75,000	21	1 – 7	–	–	6.65
12	King et al. (2008a)	Bovine colostrum	CAP	0 – 50,000	14	1 – 14	–	–	3.6
13	Lee et al. (2010)	Pig lactoferrin	SAP	0 – 50	21	–	–	1 – 28	5.9
14	Long et al. (2016)	Lysozyme	SAP	0 – 120	25	1 – 14	15 – 28	1 – 28	7.76
15	May et al. (2012)	Lysozyme	SAP	0 – 100	10	1 – 14	–	–	4.12
16	Oliver and Wells (2013)	Lysozyme	SAP	0 – 100	24	1 – 14	15 – 28	1 – 28	7.85
17	Oliver et al. (2014)	Lysozyme	SAP	0 – 100	26	1 – 14	15 – 28	1 – 28	8.65
18	Peng et al. (2016)	Crude pig β -defensin 2	CAP	0 – 15,000	21	1 – 14	15 – 28	1 – 28	9.39
19	Pierce et al. (2005)	Serum immunoglobulin G	CAP	0 – 18,000	22	1 – 14	15 – 28	1 – 28	6.4
20	Ren et al. (2015)	Pig defensin and fly-AMP	CAP	0 – 1,000	21	1 – 15	16 – 28	1 – 28	8.24
21	Shan et al. (2007)	Lactoferrin	SAP	0 – 1,000	28	–	–	1 – 30	7.1
22	Shi et al. (2018)	Pig defensin and fly-AMP	CAP	0 – 400	–	1 – 14	15 – 28	1 – 28	10.6
23	Sun et al. (2009)	Shrimp low molecular peptide	CAP	0 – 3,733	21	1 – 10	–	1 – 21	7
24	Tang et al. (2009)	CipB-lactoferricin-lactoferrampin	SAP	0 – 98	21	–	–	1 – 21	5.44
25	Tang et al. (2012)	CipB-lactoferricin-lactoferrampin	SAP	0 – 98	21	–	–	1 – 21	5.9
26	Tang et al. (2016)	Pig β -defensin 2	SAP	0 – 1	21	–	–	1 – 21	5.83
27	Wan et al. (2016)	Recombinant plectasin	SAP	0 – 60	24	–	–	1 – 21	7.67
28	Wang et al. (2006)	Antibacterial peptide	SAP	0 – 10	28	–	–	1 – 28	8.4
29	Wu et al. (2012)	Cecropin AD	SAP	0 – 400	21	1 – 12	13 – 19	1 – 19	6.76
30	Xiao et al. (2013a)	Composite antimicrobial peptide	CAP	0 – 4,000	28	1 – 15	16 – 30	1 – 30	–
31	Xiao et al. (2013b)	Composite antimicrobial peptide	CAP	0 – 4,000	28	1 – 15	16 – 30	1 – 30	–
32	Xiao et al. (2015)	Composite antimicrobial peptide	CAP	0 – 4,000	28	1 – 15	16 – 30	1 – 30	–
33	Xiong et al. (2014)	Composite antimicrobial peptide	CAP	0 – 3,000	24	–	–	1 – 32	7
34	Xiong et al. (2019)	Lysozyme	SAP	0 – 100	7	1 – 14	–	1 – 14	1.2
35	Yoon et al. (2012)	AMP-A3	SAP	0 – 90	21	1 – 14	15 – 28	1 – 28	5.76
36	Yoon et al. (2013)	AMP-P5	SAP	0 – 60	21	1 – 14	15 – 28	1 – 28	6.22
37	Yoon et al. (2014)	AMP-A3 and AMP-P5	SAP	0 – 60	21	1 – 14	15 – 28	1 – 28	5.9
38	Yu et al. (2017)	Microcin J25	SAP	0 – 2	25	1 – 15	16 – 28	1 – 28	7.98
39	Yuan et al. (2015)	Pig defensin and fly-AMP	CAP	0 – 1000	21	–	–	1 – 28	–
40	Zhou et al. (2010)	Enzymolytic soybean small peptide	CAP	0 – 18,568	28	–	–	1 – 28	9.08
41	Zou et al. (2019)	Lysozyme	SAP	0 – 100	–	–	–	1 – 30	19.8

Note: AMP, antimicrobial peptide; CAP, composite antimicrobial peptide; IBW, initial body weight (Kg); SAP, single antimicrobial peptide; 1) Age at initial experiment (days from birth).

$$1) \theta_k = \theta + \beta_{1x_i} + \epsilon_k + \zeta_k$$

θ_k = observed effect size, θ = identical with the true overall effect size, where ϵ_k is the sampling error through which the effect size of a study deviates from its true effect, ζ_k denotes that even the true effect size of the study is only sampled from an overarching distribution of effect sizes.

Results

Based on the results of the meta-regression, administering peptide increased ($p < 0.05$; quadratic) body weight, average daily gain (ADG), and average daily intake (ADI) significantly, and significantly decreased ($p < 0.05$; quadratic) feed conversion ratio (FCR) of pigs in phase 1 (Table 2). In phase 2, the administration of antimicrobial peptide (AMP) significantly increased ($p < 0.05$, squared) body weight, but significantly decreased ($p < 0.05$; linear) ADG and ADI. In general, in the total phase, body weight and survival rate increased ($p < 0.05$; quadratic) due to AMP administration. In phase 1, growth performance parameters (eg, body weight, ADG, and ADI) increased ($p < 0.05$; quadratic) and FCR decreased ($p < 0.05$; quadratic) due to SAP administration (Table 3). In phase 2, increasing the dose of SAP significantly ($p < 0.05$; quadratic) increased body weight and ADG while the FCR decreased (p

< 0.05 ; quadratic). In the total phase, body weight significantly increased ($p < 0.05$) following a quadratic pattern as the SAP dose increased. Some growth performance parameters from phase 2 (e.g., FCR) and of the total phase (e.g., ADG, ADI, and FCR) was not significant significantly different with the increasing of SAP dose. Based on the FCR, the optimal doses of SAP were 213 and 221 mg/kg of feed, for phase 1 and phase 2, respectively. The FCR values achieved at these optimal doses were 1.39 and 1.54, for phase 1 and phase 2, respectively.

The Increasing dose of CAP significantly increased ($p < 0.05$; quadratic) growth performance (e.g., body weight, ADG, and ADI) while FCR decreased significantly ($p < 0.05$; linear) in phase 1 (Table 4). Meanwhile, the ADI parameter was significant ($p < 0.05$) in phase 1 and the total phase, while in phase 2, it tended to be significant ($p < 0.1$) in phase 2, the body weight and ADG parameters of SAP were higher ($p < 0.05$) than those of CAP. Likewise, in the total phase, the ADG of SAP was higher ($p < 0.05$) than those of the CAP. In this study, meta-regression between year of publication and number of pig included in the experiments was associated with growth performance and diarrhea with $p = 0.032$ and $p < 0.163$, respectively. Meanwhile, the source of peptide (AMP) intercepts for these parameters were 38.33 ($p = 0.052$) and 48.44 ($p = < 0.071$), respectively (Table 5).

Table 2. Regression of the dosage in the meta-analyses of the effect of anti-microbial peptide on the growth performance of the pig

No.	Response	Unit	M	N	Parameter estimates				Model estimates			Interpretation		
					Int.	SE Int.	Slope	SE Slope	p-Value	RMSE	AIC ¹⁾	Trend	X	Y
1	Body weight	g	Q	146	9.83	299	0.04	0.007	<0.001	1.75	2,435	Max.	38.95	10.61
2	ADG	g/h/d	Q	146	229	9.49	0.002	0.0005	<0.001	1.67	1,574	Max.	40.31	288
3	ADI	g/h/d	Q	144	324	16.01	0.003	0.0006	<0.001	1.73	1,642	Max.	38.9	394
4	FCR		Q	144	1.45	0.045	-3.11	7.43	<0.001	1.93	-25.4	Neg.		
5	Body weight	g	Q	116	15.6	454	0.045	0.02	0.028	1.68	2,052	Max.	22.79	16.17
6	ADG	g/h/d	L	116	431	12.7	-0.0008	0.0003	0.013	1.51	1,263	Neg.		
7	ADI	g/h/d	L	114	710	25.6	-0.001	0.0005	0.009	1.67	1,364	Neg.		
8	FCR		L	114	2	0.032	5.34	1.4	0.7	1.75	-36.6	Pos.		
9	Body weight	g	Q	178	15.9	583	0.071	0.024	0.004	2.27	3,248	Max.	23.44	16.74
10	ADG	g/h/d	L	181	339	11.9	0.00056	0.0006	0.36	3.51	2,117	Pos.		
11	ADI	g/h/d	L	179	542	25.2	0.0006	0.0006	0.27	2.33	2,186	Pos.		
12	FCR		L	179	1.59	0.034	-1	2.44	0.66	3.97	89.6	Neg.		
13	Diarrhea ratios	%	L	66	12.9	2.83	-0.0002	0.0007	0.76	1.63	544	Neg.		
14	Survival rate	%	Q	15	90.2	1.61	0.003	7e-005	<0.001	1	70.4	Max.	2.29	94.5

Note: ADG, average daily gain; ADI, average daily intake; AIC, akaikie information criterion; FCR, feed conversion ratio; Int., intercept; L, linear; M, model; Max., maximum; Min, minimum; N, number of data; Neg., negative; Pos., positive; Q, quadratic; RMSE, root mean square errors; SE, standard error; X, optimal doses (mg/Kg of diet); Y, optimal output of the response variable; 1) AIC is the estimated value of the goodness of the model.

Table 3. Regression of the dosage in the meta-analyses of the effect of single anti-microbial peptide on the growth performance of the pig

No.	Response	Unit	M	N	Parameter estimates				Model estimates			Interpretation		
					Int.	SE Int.	Slope	SE Slope	p-Value	RMSE	AIC ¹⁾	Trend	X	Y
1	Body weight	g	Q	42	10.27	720	8.23	1.5	<0.001	1.33	686	Max.	211	11.1
2	ADG	g/h/d	Q	42	243	22.4	0.544	0.108	<0.001	1.27	454	Max.	217	302
3	ADI	g/h/d	Q	40	388	28.5	0.36	0.111	0.004	1	439	Max.	230	429
4	FCR		Q	40	1.61	0.08	-0.002	0.00063	0.004	1.35	37.5	Min.	213	1.39
5	Body weight	g	Q	35	16.13	998	16.7	3.21	<0.001	1.08	604	Max.	214	17.92
6	ADG	g/h/d	Q	35	389	30.4	0.588	0.124	<0.001	0.96	390	Max.	230	457
7	ADI	g/h/d	L	33	715	42	0.162	0.126	0.215	1.12	392	Pos.		
8	FCR		Q	33	1.74	0.04	-0.001	0.00062	0.008	1.3	20	Min.	221	1.54
9	Body weight	g	Q	59	16.19	1420	15.9	4.6	0.001	1.99	1.09	Max.	212	17.89
10	ADG	g/h/d	L	62	344	29.5	0.206	0.146	0.166	2.26	772	Pos.		
11	ADI	g/h/d	L	60	609	58.1	0.166	0.137	0.233	1.66	768	Pos.		
12	FCR		L	60	1.76	0.06	-0.0007	0.00058	0.192	2.75	71	Neg.		

Note: ADG, average daily gain; ADI, average daily intake; AIC, akaikie information criterion; FCR, feed conversion ratio; Int., intercept; L, linier; M, model; Max., maximum; Min, minimum; N, number of data; Neg., negative; Pos., positive; Q, quadratic; RMSE, root mean square errors; SE, standard error; X, optimal doses (mg/Kg of diet); Y, optimal output of the response variable; 1) AIC is the estimated value of the goodness of the model.

Table 4. Regression of the dosage in the meta-analyses of the effect of composite anti-microbial peptide on the growth performance of the pig.

No.	Response	Unit	M	N	Parameter estimates				Model estimates			Interpretation		
					Int.	SE Int.	Slope	SE Slope	p-Value	RMSE	AIC ¹⁾	Trend	X	Y
1	Body weight	g	Q	104	9,567	303	0.04	0.006	<0.001	1.99	1.71	Max.	39.02	10.3
2	ADG	g/h/d	Q	104	216	9.48	0.002	0.0004	<0.001	1.5	1.1	Max.	40.3	277
3	ADI	g/h/d	Q	104	296	17.5	0.003	0.0006	<0.001	1.68	1.2	Max.	38.7	368
4	FCR	-	L	104	1.41	0.054	-3e-006	5.6e-007	<0.001	1.67	-39.8	Neg.		
5	Body weight	g	Q	81	15,206	479	0.046	0.01	0.004	1.15	1.41	Max.	23.04	15,7
6	ADG	g/h/d	L	81	439	13.1	-0.0009	0.0003	0.004	1.31	864	Neg.		
7	ADI	g/h/d	L	81	704	32	-0.001	0.0004	0.004	1.89	966	Neg.		
8	FCR	-	L	81	1.59	0.041	6.5e-007	1e-006	0.606	1.73	-21.2	Pos.		
9	Body weight	g	Q	119	15,497	493	0.07	0.01	<0.001	1.41	2.1	Max.	23.5	16,3
10	ADG	g/h/d	Q	119	326	10	0.002	0.0006	<0.001	1.39	1.2	Max.	24	360
11	ADI	g/h/d	L	119	502	22.2	0.0007	0.00042	0.089	1.76	1.37	Pos.		
12	FCR	-	Q	119	1.53	0.04	-6e-006	2.1e-006	0.009	1.63	-34.8	Min.	21.4	1.47
13	Survival rate	%	Q	15	90.2	1.61	0.003	7e-005	<0.001	1	70.4	Max.	2.2	94.5

Note: ADG, average daily gain; ADI, average daily intake; AIC, akaïke information criterion; FCR, feed conversion ratio; Int., intercept; L, linear; M, model; Max., maximum; Min, minimum; N, number of data; Neg., negative; Pos., positive; Q, quadratic; RMSE, root mean square errors; SE, standard error; X, optimal doses (mg/Kg of diet); Y, optimal output of the response variable; 1) AIC is the estimated value of the goodness of the model.

Table 5. Meta-regression of anti-microbial peptide on pig

Co-variable		Growth Performance	Diarrhea ratio
Year of publication	Intercept	32.13	24.55
	p	0.0032	<0.023
	Slope	0.57	13.11
	p	0.034	<0.0017
Numbers of pig included in the experiments	Intercept	8.63	62.11
	p	0.32	<0.163
	Slope	0.12	51.21
	p	0.033	<0.21
Source of anti-microbial peptide used	Intercept	38.33	48.44
	p	0.052	<0.071
	Slope	0.12	71.11
	p	0.017	<0.072

Discussion

The use of peptides significantly improved body weight in pigs at each growth phase; this is consistent with the research of Berding *et al.* (2016); Boudry *et al.* (2007) and Cutler *et al.* (2007) in all maintenance phases as the increasing dose of SAP used in pigs increased body weight. The use of SAP in pigs helps increase the population of lactic acid bacteria in the digestive organs. Thus, intestinal health is maintained, and cell multiplication in the intestine increases. Increasing intestinal health can accommodate the absorption of the incoming nutrients, thereby increasing body weight in pigs. The use of SAP starts to stabilize when entering the third week of administration with increasing levels of administration (Boudry *et al.*, 2007). Peptide from animals has consistently had a positive effect on the increasing growth of pigs (Berding *et al.*, 2016; Boudry *et al.*, 2007; Cutler *et al.*, 2007). Positive results are also reported in the research of (May *et al.*, 2012; Long *et al.*, 2016) that the use of peptide in the form of stable lysozyme (SAP) increases body weight gain, however, it has not been able to improve FCR in pigs significantly. The optimal dose of SAP was 120-200 mg/kg of total feed (May *et al.*, 2012; Long *et al.*, 2016).

The use of peptide in the form of SAP can provide significant results on the average daily body weight growth in pigs. Research conducted by Tang *et al.* (2009; 2012; 2016) using SAP gave positive results on the average daily growth rate of pigs in phases 1 and 2. AMP that enters epithelial cells in the intestine works by fusion with other peptides and binds to

pepsin enzyme in the pig blood. Peptide that enters the blood is responsible for enhancing immune function and increasing the intestinal mucosal wall, when pigs reach the rearing age of 21 days (Tang *et al.*, 2009). The role of epithelial tissue as a protective wall has a significant role in the absorption of AMP in pigs. If peptide synergizes with thickened epithelial cells, the concentration of pathogenic microbes can be suppressed (Tang *et al.*, 2016). Several types of T-cells secreted in the intestinal tissue are IL-2, IL-4, IL-5, IL-10, and interferon- γ (Tang *et al.*, 2016). This T-cell network secretes cytokinin if the intestinal condition is healthy when AMP has synergized in the pig's body. Previous research of Tang *et al.* (2012) stated that increasing the dose of synergistic AMP administration increased the average body weight growth of 13.3% (1st phase) and 29.3% (2nd phase). According to Yoon *et al.* (2014), administration of AMP in the form of SCA is relatively stable when the pigmentation system begins to develop in the first maintenance phase until it is effective for 4-5 weeks of use. AMP can be a supporting agent in the intestinal tract of pigs to increase the body's immune system, where pigs are susceptible to stress and disease during the initial rearing period. Zhou *et al.* (2011) reported that the use of AMP in the form of CAP can increase the average daily feed consumption by 18, 25, and 38% at optimal levels, particularly 15% of administration in the feed. The use of AMP in the form of CAP from soybeans still contained high anti-nutritional substances; thus, it is necessary to treat it using protease enzymes retardation in pig. Small intestines are known to negatively impact response (Xiong *et al.*, 2014).

Conclusion

The result provided by this meta-analysis demonstrates the enhancement of overall performance of pig supplemented with anti-microbial peptide as replacement of antibiotics growth promoters (AGPs). Both form and dosage of the anti-microbial increased the growth performance of the pig.

Acknowledgement

The authors would like to say thanks to Animal Feed and Nutrition Modelling (AFENUE) Research Group, Faculty of Animal Science, IPB University, Bogor 16680, Indonesia.

Conflict of interest

The authors declared that they have no conflict of interests exist.

References

- Berding, K., Wang, M., Monaco, M.H., Alexander, L.S., Mudd, A.T., Chichlowski, M., Waworuntu, Berg B.M., Miller M.J., Dilger R.N., Donovan, S.M., 2016. Prebiotics and bioactive milk fractions affect gut development, microbiota, and neurotransmitter expression in piglets. *J. of Ped. Gastr. and Nutr.* 63, 688-697.
- Boudry, C., Buldgen, A., Portetelle, D., Collard, A., Thewis, A., Dehoux, J.P., 2007. Effects of oral supplementation with bovine colostrum on the immune system of weaned piglets. *Res. Vet. Sci.* 83, 91-101.
- Boudry, C., Dehoux, J.P., Wavreille, J., Portetelle, D., Thewis, A., Buldgen, A., 2008. Effect of a bovine colostrum whey supplementation on growth performance, faecal *Escherichia coli* population and systemic immune response of piglets at weaning. *Anim.* 2, 730-737.
- Cutler, S.A., Lonergan, S.M., Cornick, N., Johnson, A.K., Stahl, C.H., 2007. Dietary inclusion of Colicin E1 is effective in preventing *Escherichia coli* F18 post-weaning diarrhea in pigs. *Antimicro. Agents and Chem.* 51, 3830-3835.
- DeRouchey, J.M., Tokach, M.D., Nelssen, J.L., Goodband, R.D., Dritz, S.S., Woodworth, J.C., James B.W., Webster Hastad M.J., 2004. Evaluation of methods to reduce bacteria concentrations in spray-dried animal plasma and its effects on nursery pig performance. *J. Anim. Sci.* 82, 250-261.
- Harrer, M., Cuijpers, P., Furukawa, T.A., Ebert, D.D., 2019. Doing meta-analysis with R: A hands-On guide. 1st edition, Routledge.
- Huguet, A., Sève, B., Le Dividich, J., Le Huërou-Luron, I., 2006. Effects of a bovine colostrum-supplemented diet on some gut parameters in weaned piglets. *Repro. Nutr. Dev.* 46, 167-178.
- Huguet, A., Le Dividich, J., Le Huërou-Luron, I., 2012. Improvement of growth performance and sanitary status of weaned piglets fed a bovine colostrum-supplemented diet. *J. Anim. Sci.* 90, 1513-1520.
- Jin, Z., Shinde, P.L., Yang, Y.X., Choi, J.Y., Yoon, S.Y., Hahn, T.W., Lim H.T., Park Y.K., Hahn K.S., Joo J.W., Chae, B. J., 2009. Use of refined potato (*Solanum tuberosum* L. cv. Gogu valley) protein as an alternative to antibiotics in weanling pigs. *Livest. Sci.* 124, 26-32.
- Jin, Z., Yang Y., Choi J., Shinde P., Yoon S., Hahn T., Lim H., Park Y., Hahn K., Joo J., Chae B., 2008a. Effects of potato (*Solanum tuberosum* L. cv. Golden valley) protein having antimicrobial activity on the growth performance, and intestinal microflora and morphology in weanling pigs. *Anim. Feed Sci. and Tech.* 140, 139-154.
- Jin, Z., Yang, Y.X., Choi, J.Y., Shinde, P.L., Yoon, S.Y., Hahn, T.W., Lim H.T., Park Y., Hahn K.S., Joo J.W., Chae B.J., 2008b. Potato (*Solanum tuberosum* L. cv. Gogu valley) protein as a novel antimicrobial agent in weanling pigs. *J. of Anim. Sci.* 86, 1562-1572.
- Kim, J.D., Hyun, Y., Sohn, K.S., Kim, T.J., Woo, H.J., Han, I.K., 2001. Optimal dietary ratio of spray Dried plasma protein (SDPP) and dried pig solubles (DPS) in improving growth performance and immune status in pigs weaned at 21 days of age. *Asian-Australas. J. Anim. Sci.* 14, 338-345.
- King, M.R., Morel, P.C.H., Pluske, J.R., Hendriks, W.H., 2008a. A comparison of the effects of dietary spray-dried bovine colostrum and animal plasma on growth and intestinal histology in weaner pigs. *Livest. Sci.* 119, 167-173.
- King, M.R., Morel, P.C.H., Revell, D.K., Pluske, J.R., Birtles, M.J., 2008b. Dietary bovine colostrum increases villus height and decreases small intestine weight in early-weaned pigs. *J. Anim. Sci.* 21, 567-573.
- Lee, T.T., Chang, C.C., Juang, R.S., Chen, R.B., Yang, H.Y., Chu, L.W., Wang, S.R., Wang, Tseng T.H., Wang, C.S., Chen, L.J., Yu B., 2010. Pig lactoferrin expression in transgenic rice and its effects as a feed additive on early weaned piglets. *J. of Agr. and Food Chem.* 58, 5166-5173.
- Long, Y., Lin, S., Zhu, J., Pang, X., Fang, Z., Lin, Y., Che, L., Xu, S., Li, J., Huang, Y., Su, X., Wu, D., 2016. Effects of dietary lysozyme levels on growth performance, intestinal morphology, non-specific immunity and mRNA expression in weanling piglets. *Anim. Sci. J.* 87, 411-418.
- Maron, D.F., Smith, T.J., Nachman, K.E., 2013. Restrictions on antimicrobial use in food animal production: an international regulatory and economic survey. *Global. and health.* 9, 48.
- May, K.D., Wells, J.E., Maxwell C.V., Oliver W.T., 2012. Granulated lysozyme as an alternative to antibiotics improves growth performance and small intestinal morphology of 10-day-old pigs. *J. Anim. Sci.* 90, 1118-1125.
- Oliver, W.T., Wells, J.E., 2013. Lysozyme as an alternative to antibiotics improves growth performance and small intestinal morphology in nursery pigs. *J. of Anim. Sci.* 91, 3129-3136.
- Oliver, W.T., Wells, J.E., Maxwell, C.V., 2014. Lysozyme as an alternative to antibiotics improves performance in nursery pigs during an indirect immune challenge. *J. Anim. Sci.* 92, 4927-4934.
- Pierce, J.L., Cromwell, G.L., Lindemann M.D., Russell L.E., Weaver, E.M., 2005. Effects of spray-dried animal plasma and immunoglobulins on performance of early weaned pigs. *J. of Anim. Sci.* 83, 2876-2885.
- Peng, Z., Wang, A., Xie, L., Song, W., Wang, J., Yin, Z., Li, F., 2016. Use of recombinant pig β -defensin 2 as a medicated feed additive for weaned piglets. *Scient. Rep.* 6, 1-8.
- Pinheiro, J., Bates, D., DebRoy, S., Sarkar, D., Team, R.C., 2007. Linear and nonlinear mixed effects models. R package version, 3, 1-89.
- Ren, Z.H., Yuan, W., Deng, H.D., Deng, J.L., Dan, Q.X., Jin, H.T., Tian C.L., Peng X., Liang Z., Gao S., Xu S.H., Li G., Hu, Y., 2015. Effects of antibacterial peptide on cellular immunity in weaned piglets. *J. of Anim. Sci.* 93, 127-134.
- Shamseer, L., Moher, D., Clarke, M., Ghersi, D., Liberati, A., Petticrew, M., Stewart, L. A., 2015. Preferred reporting items for systematic review and meta-analysis protocols (PRISMA-P) 2015: elaboration and explanation. *BMJ.* 349, 1-25.
- Shan, T., Wang, Y., Wang, Y., Liu, J., Xu, Z., 2007. Effect of dietary lactoferrin on the immune functions and serum iron level of weanling piglets. *J. of Anim. Sci.* 85, 2140-2146.
- Shi, J., Zhang, P., Xu, M.M., Fang, Z., Lin, Y., Che, L., Xu, S., 2018. Effects of composite antimicrobial peptide on growth performance and health in weaned piglets. *Anim. Sci. J.* 89, 397-403.
- Sjofjan O., Adli D.N., 2021. The effect of replacing fish meal with fermented sago larvae (FSL) on broiler performance. *LRRD.* 33, 17.
- Sjofjan, O., Adli, D.N., Sholikin, M.M., Jayanegara, A., Irawan, A., 2021a. The effects of probiotics on the performance, egg quality and blood parameters of laying hens: A meta-analysis. *J. Anim. and Feed Sci.* 30, 11-18.
- Sjofjan, O., Adli, D.N., Harahap, R.P., Jayanegara, A., Utama, D.T., Seruni, A.P., 2021b. The effects of lactic acid bacteria and yeasts as probiotics on the growth performance, relative organ weight, blood parameters, and immune responses of broiler: A meta-analysis. *F1000Res.* 10, 183.
- Sjofjan, O., Adli, D.N., Natsir, M.H., Nuningtyas, Y.F., Wardani, T.S., Sholichatunnisa, I., Ulpah, S.N., Firmansyah, O., 2021c. Effect of Dietary Modified-Banana-Tuber Meal Substituting Dietary Corn on Growth Performance, Carcass Trait and Dietary-Nutrients Digestibility of Coloured-Feather Hybrid Duck. *JITV.* 26, 39-48.
- Sun, Z., Ma, Q., Li, Z., Ji, C., 2009. Effect of partial substitution of dietary spray-dried pig plasma or fishmeal with soybean and shrimp protein hydrolysate on growth performance, nutrient digestibility and serum biochemical parameters of weanling

- piglets. Asian-Austral. J. of Anim. Sci. 22 1032–1037.
- Tang, Z., Yin, Y., Zhang Y., Huang, R., Sun Z., Li T., Chu, T., Kong, X., Li, L., Geng, M., Tu, Q., 2009. Effects of dietary supplementation with an expressed fusion peptide bovine lactoferricin–lactoferrampin on performance, immune function and intestinal mucosal morphology in piglets weaned at age 21 d. Brit. J. Nutr. 101, 998–1005.
- Tang, X., Fatufe, A.A., Yin, Y., Tang, Z., Wang, S., Liu, Z., Li, T.J., 2012. Dietary supplementation with recombinant lactoferrampin–lactoferricin improves growth performance and affects serum parameters in piglets. J. of Anim. and Vet. Adv. 11, 2548–2555.
- Tang, Z., Xu, L., Shi, B., Deng, H., Lai, X., Liu, J., Sun, Z., 2016. Oral administration of synthetic pig beta-defensin-2 improves growth performance and cecal microbial flora and down-regulates the expression of intestinal toll-like receptor-4 and inflammatory cytokines in weaned piglets challenged with enterotoxigeni. Anim. Sci. J. 87, 1258–1266.
- Wan, J., Li, Y., Chen, D., Yu, B., Chen, G., Zheng, P., Mao, X., Yu, J., He, J., 2016. Recombinant plectasin elicits similar improvements in the performance and intestinal mucosa growth and activity in weaned pigs as an antibiotic. Anim. Feed Sci. and Tech. 211, 216–226.
- Wang, Y., Shan, T., Xu, Z., Liu, J., Feng, J., 2006. Effect of lactoferrin on the growth performance, intestinal morphology, and expression of PR-39 and protegrin-1 genes in weaned piglets. J. Anim. Sci. 84, 2636–2641.
- Wu, S., Zhang, F., Huang, Z., Liu, H., Xie, C., Zhang, J., Qiao, S., 2012. Effects of the antimicrobial peptide cecropin AD on performance and intestinal health in weaned piglets challenged with *Escherichia coli*. Peptides. 35, 225–230.
- Xiao, H., Wu, M.M., Shao, F.Y., Tan, B.E., Li, T.J., Ren, W.K., Yin, J., Wang, J., He, Q. H., Yin, Y.L., Hou, Y.Q., 2015. Metabolic profiles in the response to supplementation with composite antimicrobial peptides in piglets challenged with deoxynivalenol. J. Anim. Sci. 93, 1114–1123.
- Xiao, H., Wu, M.M., Tan, B.E., Yin, Y.L., Li, T.J., Xiao, D.F., Li, L., 2013a. Effects of composite antimicrobial peptides in weanling piglets challenged with deoxynivalenol: I. Growth performance, immune function, and antioxidation capacity. J. Anim. Sci. 91, 4772–4780.
- Xiao, H., Tan, B.E., Wu, M.M., Yin, Y.L., Li, T.J., Yuan, D.X., Li, L., 2013b. Effects of composite antimicrobial peptides in weanling piglets challenged with deoxynivalenol: II. Intestinal morphology and function. J. Anim. Sci. 91, 4750–4756.
- Xiong, X., Yang, H. S., Li, L., Wang, Y.F., Huang, R. L., Li, F. N., Wang, S.P., Qiu, W., Yin, Y., 2014. Effects of antimicrobial peptides in nursery diets on growth performance of pigs reared on five different farms. Livest. Sci. 167, 206–210.
- Xiong, X., Zhou, J., Liu, H., Tang, Y., Tan, B., Yin, Y., 2019. Dietary lysozyme supplementation contributes to enhanced intestinal functions and gut microflora of piglets. Food and Function. 10, 1696–1706.
- Yoon, J.H., Ingale, S.L., Kim, J.S., Kim, K.H., Lee, S.H., Park, Y.K., Lee, S., Kwon, K., Chae, B.J., 2014. Effects of dietary supplementation of synthetic antimicrobial peptide-A3 and P5 on growth performance, apparent total tract digestibility of nutrients, fecal and intestinal microflora and intestinal morphology in weanling pigs. Livest. Sci. 159, 53–60.
- Yoon, J.H., Ingale S.L., J. Kim S., Kim K.H., Lohakare J., Park Y.K., Park J.C., Kwon I.K., Chae B.J., 2013. Effects of dietary supplementation with antimicrobial peptide-P5 on growth performance, apparent total tract digestibility, faecal and intestinal microflora and intestinal morphology of weanling pigs. J. of the Sci. of Food and Agr. 93, 587–592.
- Yu, H.T., Ding, X.L., Li, N., Zhang, X.Y., Zeng, X.F., Wang, S., Liu, H.B., Wang, Y.M., Jia, H.M. Qiao, S.Y., 2017. Dietary supplemented antimicrobial peptide microcin J25 improves the growth performance, apparent total tract digestibility, fecal microbiota, and intestinal barrier function of weaned pigs 1 and 2. J. Anim. Sci. 95, 5064–5076.
- Yuan, W., Jin, H. T., Ren, Z. H., Deng, J. L., Zuo, Z. C., Wang, Y., Deng, H.D., Deng, Y.T., 2015. Effects of antibacterial peptide on humoral immunity in weaned piglets. Food and Agr. Imm. 26, 682–689.
- Zhou, S.F., Sun, Z.W., Ma, L. Z., Yu, J.Y., Ma, C.S., Ru, Y. J., 2011. Effect of feeding enzymolytic soybean meal on performance, digestion and immunity of weaned pigs. Asian-Austral. J. Anim. Sci. 24, 103–109.
- Zou, L., Xiong, X., Liu, H., Zhou, J., Liu, Y., Yin, Y., 2019. Effects of dietary lysozyme levels on growth performance, intestinal morphology, immunity response and microbiota community of growing pigs. J. of the Sci. of Food and Agr. 99, 1643–1650.