

The effects of tempe extract on the oxidative stress marker and lung pathology in tuberculosis Wistar rat

by Lusiani Tjandra

Submission date: 31-Aug-2023 05:24PM (UTC+0700)

Submission ID: 2154920589

File name: 2._romj-2021-0412.pdf (500.63K)

Word count: 7038

Character count: 37909

Original article

The effects of tempe extract on the oxidative stress marker and lung pathology in tuberculosis Wistar rat

Lusiani Tjandra, Budhi Setiawan, Kartika Ishartadiati, Sri Lestari Utami, Jimmy Hadi Widjaja

Wijaya Kusuma University, Surabaya, East Java, Indonesia

Received 10 December 2020, Revised 7 June 2021, Accepted 27 October 2021

© 2020, Russian Open Medical Journal

Abstract: *Background and Objectives* — Tempe (fermented soybean) has the potential as an affordable nutritional support alternative during tuberculosis (TB) infection. The purpose of the study was to assess the efficacy of supplementation with the ethanolic extract of Tempe on the oxidative stress markers alleviation and histological changes in male Wistar rats infected with *Mycobacterium tuberculosis*.

Material and Methods — Thirty-five male Wistar rats were divided randomly into five groups and infected by *Mycobacterium tuberculosis* strain H37RV intratracheally. Total antioxidant capacity (TAC) and Thiobarbituric Acid Reaction (TBARS) levels were assessed using a colorimetric method while C-reactive protein (CRP) was measured by Elisa method. The lung damage was scored using histopathological parameters.

Results — There were no significant differences in the TBARS levels and CRP concentrations compared to control. Tempe extract increased the TAC level at 200 (p=0.011), 400 (p=0.027), and 800 (p=0.029) mg/kg body weight concentrations compared to control. Perivasculitis and alveolitis mean scores were lower (p<0.05) than control in all supplement groups. Additionally, the mean scores of peribronchiolitis among supplementation groups were decreased (p<0.05) in the 200 and 800 mg/kg body weight, while the granuloma mean score was lower in the 800 mg/kg body weight compared to control.

Conclusions — Tempe extract may have a weak efficacy in improving the antioxidant capacity and lung histological condition in TB rat models.

Keywords: antioxidant, fermented soybean, oxidative stress, soy isoflavones, tempe, tuberculosis.

Cite as Tjandra L, Setiawan B, Ishartadiati K, Utami SL, Widjaja JH. The effects of tempe extract on the oxidative stress marker and lung pathology in tuberculosis Wistar rat. *Russian Open Medical Journal* 2021; 10: e0412.

Correspondence to Budhi Setiawan. Address: Department of Pharmacology, Faculty of Medicine, Wijaya Kusuma University, Jalan Dukuh Kupang XXV/54, Surabaya, East Java, Indonesia. Phone: (+62-31) 5686531. E-mail: budhisetiawan@uwks.ac.id.

Introduction

Tempe is a fermented soybean with high nutritional and economic value originating from Indonesia. Soybean contains soy isoflavone that has antioxidant (AO) activity and it might have a beneficial effect on oxidative stress [1]. Antioxidant activity of soy isoflavone may have a protective effect on acute lung tissue injury due to oxidative stress. It has been shown that soy isoflavone exerts a beneficial effect on lung tissue after radiation [2]. Solid-state fermentation (SSF) using *Rhizopus* spp. was used to enhance the isoflavone aglycones, as well as the total phenolic and antioxidant activity [3]. The fermentation process may cause an increased positive effect on human health because of the higher bioavailability of aglycone isoflavones from soybeans and it is fast to be absorbed as well [4].

Tuberculosis (TB) is the leading cause of global deaths from infectious disease [5] still a major concern in public health [5]. According to the WHO global tuberculosis report, there were approximately 10 million TB cases [39] 2018. Moreover, the estimation of death caused by TB was 1.2 million among Human Immunodeficiency Virus (HIV) negative people and an additional 251,000 patients with HIV in the same year [6]. Loss of body

weight, wasting, and malaise are the common symptoms of TB infection. Studies have shown that nutritional support during TB can accelerate weight gain and lead to muscle strength improvement [7].

Inflammation plays an important role in the host's defensive mechanism against infection, including tuberculosis. C-reactive protein (CRP) is an acute phase of inflammation and an unspecified marker of inflammation that commonly measured in active tuberculosis patients since its level increases during infections. This marker increases in active TB and does not depend on the severity and the location of the infection [8] so it can be used for TB prognosis. This test also reflects the course of the disease and the efficacy of the drugs used to combat TB infection [9].

Moreover, malondialdehyde (MDA) measurements are used to monitor lipid peroxidation in biological samples. Lipid peroxidation is the result of tissue damage caused by free radicals and subsequently creates various pathological conditions. Serum MDA concentrations reflect the levels of oxidative stress and often increased in TB infections [10]. The level of MDA in the serum can be assessed using thiobarbituric acid reactive substances (TBARS) assays.

During TB infection, oxidative stress can be prominent and cause the evident histological damage to the lung. Macrophages come in contact with bacteria and generate a large number of reactive oxygen species (ROS). If there is an imbalanced redox mechanism, these ROS can induce lipid peroxidation and eventually result in DNA damage [11]. It has been shown that the pathological response in the lung positively correlates with the TB bacterial load [12].

Previous studies on rats have shown the beneficial effects of soy isoflavones on antioxidant status in several conditions. [13] described that the supplementation of genistein, soy protein isolates from *tempe*, increase the MDA and TAC, and decrease the CRP in diabetic rats induced by streptozotocin (STZ). Oral administration of soy isoflavones for 21 days to gamma-ray irradiated male Wistar rats had a positive effect on the activity of TAC, MDA, and CRP in the liver and erythrocytes when compared to animals without soy isoflavone administration [14]. Additionally, a high soy isoflavone diet was able to reduce the level of nitric oxide and MDA as well as increase the TAC in ovariectomized rats [15].

There are a few reports about the efficacy of *tempe* extracts on the tuberculosis infection up to date. The data about the antioxidant effect of soy isoflavone to lung histopathology in the TB animal model is also limited. Considering the potential for the positive influence of soy isoflavones in *tempe* supplementation, this study aims to analyze whether the supplementation of ethanolic extract of *tempe* has a positive effect on oxidative stress biomarkers and lung histological condition of male Wistar rats infected by *Mycobacterium tuberculosis*.

Material and Methods

Reagents and chemicals

Soybeans (*Glycine max* L. Merr var. Grobogan) were obtained from a research institute for various beans and tubers in Malang, East Java, Indonesia. The *tempe* starter, containing *Rhizopus oligosporus* and rice flour for the SSF, was purchased from a local market in Surabaya, Indonesia. The brand name of the *tempe* starter was RaprimaTM and it was produced by Aneka Fermentasi Industri (AFI), Bandung, Indonesia.

Preparation of tempe samples

The *tempe* sample was prepared using a method in which the soybeans were boiled twice before fermentation. Concisely, 500 g of yellow soybeans were boiled in 100°C pre-heated tap water for 30 minutes. After that, the water used for boiling was discarded and the wet method was used to peel the boiled soybeans. Dehulling was performed by hand to rub the hulls from the cotyledons until nearly 90% of the separated skins were removed from the water. The hulls floating on the top of the water were removed as the water was drained. Then, the soybean seeds were soaked overnight for 12 hours in fresh tap water, with the water level was maintained at 5 cm over the beans, at room temperature (27–30°C). The second boiling was carried out in pre-heated fresh tap water at 100°C for 30 minutes. After removing the water, the soybeans were spread homogeneously on a flat surface to allow them to cool to room temperature. The cool down step was done 30 minutes before the soybeans were inoculated with the starter. One gram of a commercial *tempe* starter (RaprimaTM), which contained *R. oligosporus*, was added and stirred gently to

inoculate the soybeans uniformly. After 20 minutes of stirring, the inoculated soybeans were then transferred into sealed plastic bags that had been perforated with a toothpick. They were placed in a room at a lukewarm temperature (28±2°C) for 48 hours. After the incubation period, the *tempe* was kept at -10°C until the next preparation.

Uncooked tempe extraction

Extraction was performed based on the method by Xu and Chang [16]. *Tempe* samples were dried at a temperature of 40–45°C for 24 hours. The dried *tempe* was crushed until it became powder (60 mesh). *Tempe* powder (0.5 g) and 70% ethanol were stirred using a vortex and then stored in a dark room for 24 hours to preserve its light-sensitive bioactive compounds. The filtrate was separated using centrifugation (3000 rpm), then filtered. After the first filtrate was obtained, its residue was added to 5 mL of 70% ethanol again, and then the previous process was repeated. The first and the second filtrate were mixed and then evaporated by a rotary evaporator at 60°C.

Total polyphenol content and total flavonoid analyses

Total polyphenol content (TPC) was determined using Folin Ciocalteu's method [17]. As much as 0.1 mL of extract and 0.5 mL of Folin Ciocalteu's reagent were mixed with pure H₂O (1:1) in a tube, vortexed, and allowed to stand for 8 mins. Then, 4.5 mL of 2% sodium carbonate solution was added, vortexed, and incubated in a dark room for 1 hour at room temperature. The absorbance of the resulting blue complex was measured at 770 nm using a spectrophotometer (Genesys 20, Thermo Fisher scientific spectrophotometer). Methanol was used as the blank and catechin was used as the standard.

About 1 g of the sample was treated in a 100 mL round bottom flask with 1.0 mL of hexamethylenetetramine 0.5% (w/v), 20.0 mL of acetone, and 2.0 mL of hydrochloric acid. The mixture was refluxed on a water bath for 2 hours and filtered through small cotton wool into a 100 mL flask. The filter was washed twice with 20.0 mL of acetone and the washings were refluxed for 10 minutes. When the solutions were cooled down, they were filtered and made up to 100 mL with acetone. Twenty mL of this solution was transferred into a separating funnel, extracted with 15.0 mL of ethyl acetate. The extraction was repeated three times, using 10.0 mL of ethyl acetate each time, and the combined organic phases were washed twice with 50 mL of water and made up to 50 mL with ethyl acetate. A volume of 2.0 mL of AlCl₃ 2% (w/v) in ethanol was added to 10.0 mL of SS and the solution was made up to 25.0 mL with a methanolic solution of acetic acid 0.5% (v/v) (Probe Solution, PS). At the same time, 10.0 mL of SS were made up to 25.0 mL with methanol/acetic acid solution (Contrast Solution, CS).

DPPH assay

The antioxidant activity of the *tempe* ethanol extract was measured with the 2,2-diphenyl-1-picrylhydrazyl (DPPH) method with slight modifications. Freshly prepared and mixed with 0.2 mL of *tempe* extract in a test tube. As a blank, 70% ethanol (0.2 mL) was used and mixed with 3.8 mL of ethanol DPPH. The test tube was then incubated in the dark for 30 minutes at room temperature. The final absorbance was then measured by using a spectrophotometer

(Genesys 20, Thermo scientific spectrophotometer) at 517 nm against the blank. The percentage of radicals' inhibition was calculated using the following formula:

$$\{1 - (\text{absorbance of the sample} / \text{absorbance of the control})\} (1)$$

Tempe extracts administration to TB animal model

Albino male Wistar rats, weighing between 150–200 g, were infected with 50 µL of the solution containing 108/mL of *Mycobacterium tuberculosis* strain H37RV through the trachea. *Mycobacterium tuberculosis* bacteria were taken from the stock grown in Lowenstein-Jensen (LJ) media for 2–3 weeks. Thirty-five rats were infected with *Mycobacterium tuberculosis* intratracheally and then divided randomly into five groups. Randomization was done using www.randomizer.org to get the random numbers. The extract administration was done orally since this study was designed to find the positive effect of food-based supplementation. Additionally, a previous study had administered orally by doses ranging from 200 mg/kg BW to 1000 mg/kg BW nutrient-enriched soybean tempe to mice [18]. Therefore, the first, second, and third groups received the tempe ethanol extract via oral gavage with a dose of 200 mg/kg BW, 400 mg/kg BW, and 800 mg/kg BW; the fourth and the fifth groups served as negative controls (CMC-Na), and another group to be sacrificed for infection confirmation under general anesthesia. The supplementation was carried out on the 30th day following the infection and given for 14 days. It is commonly accepted that the TB incubation period is between two to twelve weeks and effective treatment using TB chemotherapy may significantly decrease the infections within two weeks.

At the end of the 6th week, the sample collection was conducted for all the rats as a similar study had described [19]. Rats were anesthetized during the blood and tissue sample collection. An appropriate needle was used to withdraw the blood sample from a ventricle of the heart after a thoracotomy procedure. Then, the lung tissues were taken for further histopathological analyses.

Lung tissue pathology analysis

The lung tissue damage was assessed based on the Dorn score and conducted by a professional pathologist. The histopathological parameters of peribronchiolitis, perivascularitis, alveolitis, and granuloma formation were each semi-quantitatively scored as absent, minimal, slight, moderate, marked, or strong; noted as 0, 1, 2, 3, 4, and 5, respectively. In this scoring system, the frequency and the severity of the lesions were also incorporated. Granuloma formation was scored by estimating the occupied area of the lung section. For each point, the lungs of seven rats were examined, and the mean score of each of the four histological parameters was calculated. The mean scores of the four parameters mentioned above were added to evaluate the strength of the total pathological response. Thus, the maximum score was 20 [12].

Oxidative stress biomarker analyses

Membrane lipid peroxidation was estimated by the end-point generation of Thiobarbituric acid reactive substances (TBARS) using the Quantichrome TM TBARS Assay Kit (DTBA-100). These substances are mainly malondialdehydes (MDAs) that are formed during the decomposition of lipid peroxidation products. The assay

is based on the reaction of TBARS with thiobarbituric acid (TBA) to develop a pink-colored product. The color intensity at 535 nm is directly proportional to the concentration of TBARS in the sample [20].

Rat serum samples were assayed for TAC using the commercially available Total Antioxidant Status (TAS) kit (Quantichrome TM Antioxidant Assay Kit (DTAC-100)). The assay measures the total antioxidant capacity, in which Cu²⁺ is reduced by an antioxidant to Cu⁺. The resulting Cu⁺ forms a specially colored complex with a dye reagent. The color intensity at 570 nm is proportional to TAC in the sample [21].

Serum CRP concentrations were determined in duplicate with the commercially available enzyme-linked immunosorbent assay (ELISA) kit (Bioassay Technology Laboratory). CRP was added to the wells that were pre-coated with CRP monoclonal antibody. After incubation, the unbound biotin-conjugated anti-mouse CRP antibody was added as well to bound the mouse CRP. After incubation, the unbound biotin-conjugated anti-mouse CRP antibody was washed away during the washing step. Streptavidin HRP was added and bound to the biotin-conjugated anti-mouse CRP antibody. After incubation, the unbound Streptavidin HRP was washed away during the washing step. The substrate solution was then added and the developed color was in proportion to the amount of mouse CRP. The reaction was terminated by the addition of an acidic stop solution and the absorbance was measured at 450 nm [22].

Statistical analysis

The results were expressed as means and standard deviations. Each sample, soybean, tempe, and their ethanol extract, was measured twice. The Kolmogorov-Smirnov test was used to test whether samples come from a normal distribution or not. The means comparison of more than two groups were analyzed by the univariate analysis of variance (UNIANOVA), followed by the Least Significant Differences (LSD) post hoc test if the samples were normally distributed. Kruskal-Wallis H test (nonparametric test) was applied for the alternative of UNIANOVA if the distribution of the samples was not normal and Mann-Whitney U test was applied in post hoc test. The results of total flavonoids, TAC, TBARS and DPPH were analyzed using UNIANOVA and total polyphenols, lung pathology score and CRP were assessed by Kruskal-Wallis H test. The cutoff of the statistical significance level was set at p<0.05. The statistical analyses were done through the commercially available Statistical Package for Social Sciences software (IBM Corp. Released 2013. IBM SPSS Statistics for Windows (Version 23.0) Armonk, NY: IBM Corp.).

Results

Total polyphenols and total flavonoid levels in tempe extract were found to be higher compared to those in soybeans and uncooked tempe. Uncooked tempe showed lower total polyphenols and total flavonoids than soybean and tempe extract with 67.92 mg GAE/100 g sample and 19.01 mg routine equivalent/100 g sample, respectively. On the other hand, tempe extract showed the highest total polyphenols and total flavonoids with 853.00 mg GAE/100 g samples and 34.36 mg routine equivalent/100 g samples, respectively. The results of the DPPH assay showed soybean (20.01%) and uncooked tempe (21.70%) were relatively comparable. However, Tempe extract (30.72%) was higher than both. Hence, the ethanol extract of tempe has the

highest result in antioxidant activity among other samples, measured by DPPH assay, in this study (Figure 1).

The administration of *tempe* ethanol extract showed a significant increase in TAC compared to controls. The increase was not dose-dependent because there was no difference in TAC levels between each dose (Table 1). Significant improvement was obtained by the administration of 200 mg/kg BW (252.54±33.80 μM Trolox Equivalents) compared to the control (197.94±33.43 μM Trolox Equivalents). While the administration of 400 mg/kg BW (244.84±22.94 μM Trolox Equivalents) and 800 mg/kg BW (244.29±52.54 μM Trolox Equivalents) did not differ significantly from 200 mg/kg BW.

Oral administration of *tempe* extract showed no significant change in serum CRP levels compared to controls. Table 2 showed that compared to CMC-Na (2.57 mg/L), 200 mg/kg BW dose (2.74 mg/L), 400 mg/kg BW (2.90 mg/L), and 800 mg/kg BW (2.65 mg/L) showed the CRP levels that were not significantly different (p>0.05). TBARS levels in TB models did not show a significant decrease after *tempe* extract administration for 14 days compared to controls. Control CMC-Na (0.90±0.22 TBARS μM MDA equivalents) compared to 200 mg/kg BW (1.04±0.28 TBARS μM MDA equivalents) dose, 400 mg/kg BW (1.16±0.34 μM MDA equivalents), and 800 mg/kg BW (1.09±0.21 μM MDA equivalents) did not show significant differences (p>0.05).

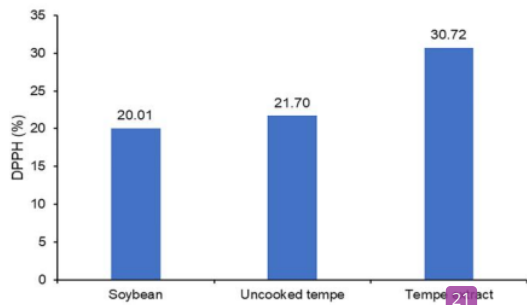


Figure 1. Antioxidant activity assessed using DPPH assay. Values with different superscript letters (a-c) in the figure are significantly different (p<0.05).

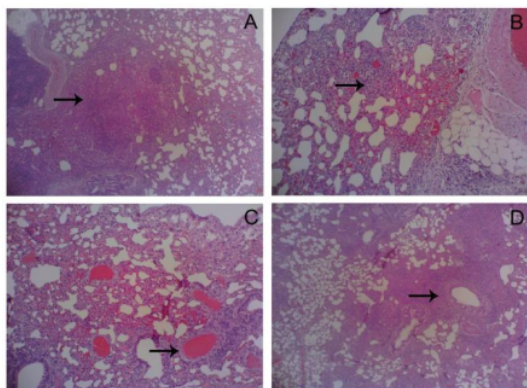


Figure 2. The histological analysis result of the lung tissue: alveolitis (A), granuloma (B), peribronchiolitis (C), and perivasculitis (D).

Table 1. Total polyphenol, total flavonoid, and DPPH assay of soybean, uncooked *tempe*, and ethanol extract of *tempe*

	Total polyphenol [†]	Total flavonoid ^{††}
Soybean	146.20 ^b	22.87 ^b
Uncooked <i>tempe</i>	67.92 ^a	19.01 ^a
<i>Tempe</i> extract	853.45 ^c	34.36 ^c

Median (n=2). [†] mg Gallic Acid (GAE)/100 g sample; ^{††} mg routine equivalent/100 g sample. Values with different superscript letters (a-c) in the same row are significantly different (p<0.05) based on the Kruskal-Wallis H test (nonparametric).

Table 2. Oxidative stress biomarker analysis results

	CRP (mg/L)*	TBARS (μM)**†	TAC (μM)**††
Control	2.57 (2.51-2.71) ± 0.15 ^a	0.90 ± 0.22 ^a	197.94 ± 33.43 ^a
200 mg/kg BW	2.74 (2.56-2.85) ± 0.16 ^a	1.04 ± 0.27 ^a	252.54 ± 33.80 ^b
400 mg/kg BW	2.90 (2.51-3.21) ± 0.37 ^a	1.16 ± 0.34 ^a	244.84 ± 22.94 ^b
800 mg/kg BW	2.65 (2.43-2.86) ± 0.62 ^a	1.09 ± 0.21 ^a	244.29 ± 52.54 ^b

Median (low quartile-upper quartile) (n=7). * Mean ± SD (n=7); [†] MDA equivalents; ^{††} Trolox equivalents. Values with different superscript letters (a, b) in the same row are significantly different (p<0.05).

The lung pathology assessment has shown that all concentrations (200, 400, 800 mg/kg BW) had significant differences in perivasculitis and alveolitis (Figure 2). Peribronchiolitis scores in the 400 and 800 mg/kg BW (score=3.00±0.2) were found to be significantly lower than control (3.86±0.38). Moreover, a significantly lower score for granulomas could be found only in 800 mg/kg BW (3.71±0.76) in comparison with the control (score=4.00). Therefore, *tempe* extracts administration resulted in significant changes to lung pathology characteristics, especially on perivasculitis and alveolitis in higher doses of administration (Table 3).

Discussion

Phenolic acids and flavonoids are phytochemicals that belong to a structural chemical class of polyphenol. In nature, these compounds are found in fruits, vegetables, cereals, and beverages [23]. Isoflavones are one of the subgroups of flavonoids in soybean. Besides the isoflavones, soybean has several bioactive components such as saponins, phytic acids, phytosterols, trypsin inhibitors, and other basic nutritive constituents, such as lipids, vitamins, minerals, oligosaccharides, and biologically active peptides [24].

The consumption of soybean as a functional food is widely recognized for its potential health benefits. Soybeans have been found to reduce the effects of menopause, promote heart and bone health, as well as decrease the risk of diabetes [25]. It has been suggested that isoflavones and their metabolites exert their anti-inflammatory properties by modulating the peroxisome proliferator-activated receptors (PPARs) α/γ. They are found to have a down-regulation influence on several pro-inflammatory cytokines, such as TNFα, IL-6, IL-8, IL-1β, or IFN-γ. Additionally, the expression of proteins during the production of inflammatory mediators, like iNOS, COX-2, NFκB, is also decreased [26]. All of these aforementioned chemokines and cytokines are commonly found in the innate response to *Mtb* infection [27]. A previous study has shown that soy-based food supplementation produced positive effects on liver function thus improving the tolerance of antituberculosis drugs among active TB patients [28].

Table 3. Histological damage of lung tissue on scores of Dorman's scale

	Perivasculitis*	Peribronchiolitis*	Alveolitis*	Granuloma*
Control	4.00 (3.00-4.75) ^b	4.00 (3.25-4.00) ^b	4.00 (3.00-4.00) ^b	5.00 (4.25-5.00) ^b
200 mg/kg BW	3.00 (2.00-4.00) ^{ab}	3.50 (3.00-4.00) ^b	2.50 (1.25-3.00) ^a	4.00 (4.00-5.00) ^b
400 mg/kg BW	3.00 (2.00-3.75) ^a	3.00 (2.25-4.00) ^b	3.00 (1.25-3.00) ^a	5.00 (3.00-5.00) ^b
800 mg/kg BW	3.00 (2.00-3.00) ^a	3.00 (2.00-4.00) ^b	3.00 (2.00-3.00) ^b	4.00 (3.00-4.00) ^b

*Median (low quartile-upper quartile) (n=7). Values with different superscript letters (a, b) in the same row are significantly different ($p < 0.05$).

It has been described that a traditional SSF using microorganisms on soybean can increase the level of the aglycone isoflavones, free fatty acids, and bioactive peptides [29-31]. *Tempe* is a traditional soy-based food from Indonesia made by SSF using molds (e.g. *Rhizopus* spp.) as the starter. It is considered as a functional food that has a significant amount of isoflavone as one of its bioactive components [32]. Perhaps, *tempe* can be considered for one of the nutritional alternatives for undernutrition among TB active patients [33]. One of the reasons for this notion might be due to the beneficial health effects of soybean's bioactive compounds, besides its good protein content.

The results have demonstrated that even though the total phenolic and flavonoid in *tempe* extracts has increased, the increment of total phenolic is up to about 3.6 times of soybean. On the other hand, the increase in total flavonoid content is only approximately 1.5 times of soybean. It means the extraction method with 70% ethanol as the solvent might be able to extract more phenolic compounds than the total flavonoid from soy products or food. Furthermore, the DPPH result from the *tempe* extract (30.72%) was higher than both soybean (20.01%) and uncooked *tempe* (21.70%).

Several previous studies support these results. Alcoholic extractions have shown to be better at retaining antioxidant activity in *tempe* compared to other solvents [34]. Pure ethanol and methanol have shown to be favorable for isoflavone extraction. However, 50 wt% aqueous ethanol can be used to obtain high total phenolic content and AO activity extracts [35]. In brown soybean extractions using water and different concentrations (50%, 75%, 95%) of ethanol, the 75% ethanol extract demonstrated higher DPPH antioxidant activity, total phenol, and anthocyanin content [36]. Moreover, 70% of ethanol is recommended for extracting soybean antioxidants due to the high TPC and 81% oxygen radical absorbance capacity (ORAC) results [37]. On the other hand, solvents, such as acetonitrile, are superior to others in extracting isoflavones in soy foods [38]. However, the total phenolic content was only efficiently extracted using water as the solvent [39].

Oxidative stress (OS) arises due to the imbalance between the free ROS and antioxidant mechanisms. There is a higher risk of OS in the lung compared to other organs due to their larger surface area and high blood supply [40,41]. To compensate for this burden, the lung has evolved numerous antioxidant defense mechanisms. There are two distinct groups of antioxidant processes, enzymatic and non-enzymatic systems. Enzymatic antioxidant processes present in the lung, including superoxide dismutase (SOD), glutathione peroxidase, and catalase. Whereas non-enzymatic processes involve ferritin, ascorbic acid, ceruloplasmin, and carotene. Together, these antioxidant mechanisms buffer oxidants and maintain the oxidative balance in the lung [42]. However, it is important to note that such complex antioxidant mechanisms can be overwhelmed if the production of

ROS is greater than the capacity of cells to scavenge it, leading to OS.

In this study, the antioxidant activity of *tempe* extract may be beneficial for the histological damage in lung tissue. The positively impacted lung pathology parameters were perivasculitis, alveolitis, peribronchiolitis, and granuloma. The improvement of TAC biomarkers also exhibited the same pattern. Among TAC, TBARS, and CRP, only TAC biomarkers were lower than the control at 200, 400, and 800 mg/kg BW doses. They showed comparable results at all concentrations. However, this positive effect could be unpredictable since it described the non-dose-dependent characteristics, which implies that it may be caused by other factors as well.

Moreover, this linear pharmacokinetics (lack of dose dependence) makes it challenging to predict its hazard exposure in humans, so it is difficult to assess the appropriate concentration. The deviation from linear, dose-independent to non-linear, dose-dependent pharmacokinetics, extrapolating the same toxicity from high to low doses [43]. Several factors may influence the pharmacokinetics of xenobiotics, which if left unconsidered, may introduce the uncertainty into the predictions of toxicity following any chemical exposure. One of these factors is the differences of species [44].

On the other hand, the Wistar rat is a valuable model to understand the host-pathogen interactions that result in the control of TB infection and the potential establishment of latent TB. The rat is also a suitable animal model choice for TB drug discovery due to the ease of manipulation, low cost, and well-established use in toxicology and pharmacokinetic analyses [45]. In the last century, rats were the most used animal model in biochemical research, but in the previous two decades, its popularity decayed due to the limited ability to perform the reverse genetics in rats.

This in vivo study was not able to show a dose-response relationship of the ethanolic *tempe* extract with our TB animal model. This effect is the first criterion for identifying prospective active substances. The fundamental reason for such criteria is that there is a need for screening the particular compounds at lower doses or therapeutic doses, which should show a direct relationship to the biological response of interest [43]. Moreover, it has been suggested that several studies on antioxidants have failed to note any significant change in disease endpoints. The results of these studies have been interpreted as a setback for the oxidation hypothesis [40,46]. Perhaps it indicates the major misconceptions about the hypothesis and the unjustified outcome expectations. Incorrect selection of the sample population, endpoints that are incompatible with the hypothesis, poor choice of antioxidants, and the lack of inclusion of oxidative stress biochemical markers and vascular response are some of the contributors to the "failure" of these studies [46].

Conclusion

The administration of ethanolic *tempe* extract may result in weak positive influences on the total antioxidant activity and histological lung tissue damage. However, these beneficial effects were not described by a dose-response (non-linear) relationship. Further studies to explore these findings are warranted to clarify the underlying cellular mechanism.

Acknowledgment

The Directorate General of Higher Education of Indonesia has supported this study through a basic research grant for the university.

31

Conflict of interest

The authors reported no potential conflict of interest. The authors alone are responsible for the content and writing of this paper.

37

Ethical approval

All procedures performed in studies involving animals were in accordance with the ethical standards of the Medical Faculty of Wijaya Kusuma University, Surabaya at which the studies were conducted with number 13/SLE/FK/UWJK/III/2013 (8 March 2013).

References

- Bolanho BC, Beleia A. Bioactive compounds and antioxidant potential of soy products. *Alim Nutr Araraquara* 2012; 22(4): 539-546. <https://doi.org/10.1590/rn.2011.0011>
- Hillman GG, Singh-Gupta V, Hoogstra DJ, Abernathy L, Rakowski J, Yunker CK, et al. Differential Effect of Soy Isoflavones in Enhancing High Intensity Radiotherapy: Protecting Lung Tissue in a Pre-Clinical Model of Lung Carcinoma. *Radiother Oncol* 2013; 109(1): 117-125. <https://doi.org/10.1016/j.radonc.2013.01.015>
- Cheng KC, Wu JY, Lin JT, Liu WH. Enhancements of isoflavone aglycones, total phenolic content, and antioxidant activity of black soybean by solid-state fermentation with *Rhizopus* spp. *Eur Food Res Tech* 2013; 236: 1107-1113. <https://doi.org/10.1007/s00217-013-1936-7>
- Okabe Y, Shimazu T, Tanimoto H. Higher bioavailability of isoflavones after a single ingestion of aglycone-rich fermented soybeans compared with glucoside-rich non-fermented soybeans in Japanese postmenopausal women. *J Sci Food Agric* 2011; 91(4): 658-663. <https://doi.org/10.1002/jsfa.4228>
- Floyd K, Glaziou P, Zumla A, Ravigione M. The global tuberculosis epidemic and progress in care, prevention, and research: an overview of the End TB era. *Lancet Respir Med* 2018; 6(4): 299-314. [https://doi.org/10.1016/s2213-2600\(18\)30057-2](https://doi.org/10.1016/s2213-2600(18)30057-2)
- World Health Organization (WHO). Global Tuberculosis Report 2019. Geneva, Switzerland: World Health Organization. 2019; 283 p. <https://www.who.int/publications/i/item/global-tuberculosis-report-2019>
- Grober L, Nagpal S, Sudarsanam TD, Sinclair D. Nutritional supplements for people being treated for active tuberculosis. *Cochrane Database Systematic Rev* 2016; 2016(6): CD006086. <https://doi.org/10.1002/14651858.cd006086.pub4>
- iqi K, Lambert ML, Walley J. Clinical diagnosis of smear-negative pulmonary tuberculosis in low-income countries: the current evidence. *Lancet Infect Dis* 2003; 3(5): 288-296. [https://doi.org/10.1016/s1473-3099\(03\)00609-1](https://doi.org/10.1016/s1473-3099(03)00609-1)
- Almirall J, Bolibar I, Toran P, Pera G, Boquet X, Balanzó X, et al; Community-acquired pneumonia maresme study group. Contribution of C-reactive protein to the diagnosis and assessment of severity of community-acquired pneumonia. *Chest* 2004; 125(4): 1335-1342. <https://doi.org/10.1378/chest.125.4.1335>
- Lamsal M, Gautam N, Bhatta N, Toora BD, Bhattacharya SK, Baral N. Evaluation of lipid peroxidation product, nitrite and antioxidant levels in newly diagnosed and two months follow-up patients with pulmonary tuberculosis. *Southeast Asian J Trop Med Public Health* 2007; 38(4): 695-703. <https://pubmed.ncbi.nlm.nih.gov/17883009>
- Rajopadhye SH, Mukherjee SR, Chowdhary AS, Dandekar SP. Oxidative Stress Markers in Tuberculosis and HIV/TB Co-Infection. *J Clin Diagn Res* 2019; 11(8): BC24-BC28. <https://doi.org/10.7860/jcdr/2017/28478.10473>
- Dormans J, Burger M, Aguilar D, Hernandez-Pando R, Kremer K, Roholl P, et al. Correlation of virulence, lung pathology, bacterial load and delayed type hypersensitivity responses after infection with different *Mycobacterium tuberculosis* genotypes in a BALB/c mouse model. *Clin Exp Immunol* 2004; 137(3): 460-468. <https://doi.org/10.1111/j.1365-2249.2004.02551.x>
- Clemmensen C, Smajilovic S, Smith EP, Woods SC, Bräuner-Osborne H, Seeley RJ, et al. Oral L-Arginine Stimulates GLP-1 Secretion to Improve Glucose Tolerance in Male Mice. *Endocrinology* 2013; 154(11): 3978-3983. <https://doi.org/10.1210/en.2013-1529>
- Dixit AK, Bhatnagar D, Kumar V, Chawla D, Fakhruddin K, Bhatnagar D. Antioxidant potential and radioprotective effect of soy isoflavone against gamma irradiation induced oxidative stress. *Journal of Functional Foods* 2012; 4(1): 197-206. <https://doi.org/10.1016/j.jff.2011.10.005>
- Abdelrazek HMA, Mahmoud MMA, Tag HM, Greish SM, Eltamany DA, Soliman MTA. Soy Isoflavones Ameliorate Metabolic and Immunological Alterations of Ovariectomy in Female Wistar Rats: Antioxidant and Estrogen Sparing Potential. *Oxid Med Cell Longev* 2019; 5713606. <https://doi.org/10.1155/2019/5713606>
- Xu BJ, Chang SK. A comparative study on phenolic profiles and antioxidant activities of legumes as affected by extraction solvents. *J Food Sci* 2007; 72(2): S159-S166. <https://doi.org/10.1111/j.1750-3841.2006.00260.x>
- Ainsworth EA, Gillespie KM. Estimation of total phenolic content and other oxidation substrates in plant tissues using Folin-Ciocalteu reagent. *Nature protocols* 2007; 2(4): 875-877. <https://doi.org/10.1038/nprot.2007.102>
- Mohd Yusof H, Ali NM, Yeap SK, Ho WY, Beh BK, Koh SP, et al. Hepatoprotective effect of fermented soybean (nutrient enriched soybean tempeh) against alcohol-induced liver damage in mice. *Evid Based Complement Alternat Med* 2013; 2013: 274274. <https://doi.org/10.1155/2013/274274>
- Mustika A, Agil M, Sudjarwo S, Mertaniasih NM. Extract ethanol of *Centella asiatica* reduce expression of *Mycobacterium tuberculosis* antigen on alveolar macrophage from rats lung tissue infected with *Mycobacterium tuberculosis*. *Pathology* 2016; 48(S1): S144. <https://doi.org/10.1016/j.pathol.2015.12.392>
- Ohkawa H, Ohishi N, Yagi K. Assay for lipid peroxides in animal tissues by thiobarbituric acid reaction. *Anal Biochem* 1979; 95(2): 351-358. [https://doi.org/10.1016/0003-2697\(79\)90738-3](https://doi.org/10.1016/0003-2697(79)90738-3)
- Cao G, Alessio HM, Cutler RG. Oxygen-radical absorbance capacity assay for antioxidants. *Free Radic Biol Med* 1993; 14(3): 303-311. [https://doi.org/10.1016/0891-2919\(93\)90027-r](https://doi.org/10.1016/0891-2919(93)90027-r)
- Manafe DRT, Agustini D, Prasetyastuti. Effects of quercetin on the nicotine-induced oxidative status in male Wistar rats: study on c-reactive protein (CRP) and malondialdehyde (MDA) concentrations. *J Med Sci* 2016; 48(2): 81-88. <http://doi.org/10.19106/JMedSci04802201602>
- Pandey KB, Rizvi SI. Plant polyphenols as dietary antioxidants in human health and disease. *Oxid Med Cell Longev* 2009; 2(5): 270-278. <https://doi.org/10.4161/oxm.125.9498>
- Isanga J, Zhang GN. Soybean Bioactive Components and their Implications to Health – A Review. *Food Reviews International* 2008; 24(2): 252-276. <https://doi.org/10.1080/87559120801926351>

25. Singh BP, Yadav D, Vij S. Soybean Bioactive Molecules: Current Trend and Future Prospective. In: J Mérillon JM, Ramawat K, Eds. *Bioactive Molecules in Food*. Reference Series in Phytochemistry. Cham: Springer. 2017: 1-29. https://doi.org/10.1007/978-3-319-54528-8_4-1.
26. Medjakovic S, Mueller M, Jungbauer A. Potential health-modulating effects of isoflavones and metabolites via activation of PPAR and AhR. *Trends* 2010; 2(3): 241-279. <https://doi.org/10.3390/nu2030241>.
27. Domingo-Gonzalez R, Prince O, Cooper A, Khader SA. Cytokines and chemokines in Mycobacterium tuberculosis infection. *Microbiol Spectr* 2016; 4(5): 10.1128/microbiolspec.TBT2-0018-2016. <https://doi.org/10.1128/microbiolspec.tbt2-0018-2016>.
28. Mel'nyk VP, Anisimova IuM, Borovs'kyi VR, Stadnyk LV, Svitlychna TH. Soy-based food in a complex treatment of patients with tuberculosis. *Lik Sprava* 2006; 8(8): 65-70. Ukrainian. <https://pubmed.ncbi.nlm.nih.gov/17427429>.
29. Ali NM, Yeap SK, Yusof HM, Beh BK, Ho WY, Koh SP, et al. Comparison of free amino acids, antioxidants, soluble phenolic acids, cytotoxicity and immunomodulation of fermented mung bean and soybean. *J Sci Agric* 2016; 96(5): 1648-1658. <https://doi.org/10.1002/jsfa.7267>.
30. Gibbs BF, Zougman A, Masse R, Mulligan C. Production and characterization of bioactive peptides from soy hydrolysate and fermented food. *Food Research International* 2004; 37(2): 123-131. <https://doi.org/10.1016/j.foodres.2003.09.010>.
31. Haron H, Ismail A, Azlan A, Shahar S, Peng LS. Daidzein and genistein contents in tempeh and selected soy products. *Food Chemistry* 2009; 114(4): 1350-1356. <https://doi.org/10.1016/j.foodchem.2009.01.053>.
32. Liu K. Soybeans as functional foods and ingredients. New York: AOCS Press. 2004; 331 p. <https://doi.org/10.1201/9781003040286>.
33. Fatmah. Impact of Date-tempeh Biscuit on the Nutritional Status of Stunted and Wasted Toddlers. *Pakistan Journal of Nutrition* 2018; 17(11): 542-549. <https://dx.doi.org/10.3923/pjn.2018.542.549>.
34. Wang CT, Hsu CK, Chou ST, Chen YC, Huang FS, Chung YC. Effect of fermentation time on the antioxidant activities of Tempeh prepared from fermented soybean using *Rhizopus oligosporus*. *Int J Food Sci Tech* 2009; 44(4): 799-806. <https://doi.org/10.1111/j.1365-2621.2009.01907.x>.
35. Handa CL, de Lima FS, Guelfi MFG, Georgetti SR, Ida EI. Multi-response optimisation of the extraction solvent system for phenolic and antioxidant activities from fermented soy flour using a simplex-centroid design. *Food Chem* 2016; 197(Pt A): 175-184. <https://doi.org/10.1016/j.foodchem.2015.10.124>.
36. CH, Hwang KE, Kim HW, Song DH, Kim YJ, Ham YK, et al. Antioxidant activity of brown soybean ethanolic extracts and application to cooked pork patties. *Korean J Food Sci An* 2016; 36(3): 368. <https://doi.org/10.5851/kosfa.2016.36.3.359>.
37. Chung H, Ji X, Canning C, Sun S, Zhou K. Comparison of different strategies for soybean antioxidant extraction. *J Agric Food Chem* 2010; 58(7): 4508-4512. <https://doi.org/10.1021/jf904278r>.
38. Murphy PA, Barua K, Hauck CC. Solvent extraction selection in the determination of isoflavones in soy foods. *J Chromatogr B Analyt Technol Biomed Life Sci* 2002; 777(1-2): 129-138. [https://doi.org/10.1016/S1570-0232\(02\)00342-2](https://doi.org/10.1016/S1570-0232(02)00342-2).
39. Liu X, Chen Z. The pathophysiological role of mitochondrial oxidative stress in lung diseases. *J Transl Med* 2017; 15(1): 207. <https://doi.org/10.1186/s12967-017-1306-5>.
40. M Davies A, G Holt A. Why antioxidant therapies have failed in clinical trials. *Theor Biol* 2018; 457: 1-5. <https://doi.org/10.1016/j.tbi.2018.08.014>.
41. Bargagli E, Olivieri C, Bennett D, Prasse A, Muller-Quernheim J, Rottoli P. Oxidative stress in the pathogenesis of diffuse lung diseases: a review. *Respir Med* 2009; 103(9): 1245-1256. <https://doi.org/10.1016/j.rmed.2009.04.014>.
42. Shastri MD, Shukla SD, Chong WC, Dua K, Peterson GM, Patel RP, et al. Role of Oxidative Stress in the Pathology and Management of Human Tuberculosis. *Oxid Med Cell Longev* 2018; 2018: 7695364. <https://doi.org/10.1155/2018/7695364>.
43. Tsatsakis AM, Vassilopoulou L, Kovatsi L, Tsitsimpikou C, Karamanou M, Leon G, et al. The dose response principle from philosophy to modern toxicology: The impact of ancient philosophy and medicine in modern toxicology science. *Toxicol Rep* 2018; 5: 1107-1113. <https://doi.org/10.1016/j.toxrep.2018.10.001>.
44. Martignoni M, Groothuis GM, de Kanter R. Species differences between mouse, rat, dog, monkey and human CYP-mediated drug metabolism, inhibition and induction. *Expert Opin Drug Metab Toxicol* 2006; 2(6): 875-894. <https://doi.org/10.1517/17425255.2.6.875>.
45. Singhal A, Hervé M, Mathys V, Kiass M, Creusy C, Delaire B, et al. Experimental tuberculosis in the Wistar rat: a model for protective immunity and control of infection. *PLoS One* 2011; 6(4): e18632. <https://doi.org/10.1371/journal.pone.0018632>.
46. Parthasarathy S, Khan-Merchant N, Penumetcha M, Khan BV, Santanam N. Did the antioxidant trials fail to validate the oxidation hypothesis? *Curr Atheroscler Rep* 2001; 3(5): 392-398. <https://doi.org/10.1007/s11883-001-0077-9>.

Authors:

Lusiani Tjandra – Lecturer, Department of Pharmacology, Faculty of Medicine, Wijaya Kusuma University, Surabaya, East Java, Indonesia. <https://orcid.org/0000-0002-0387-3179>.

Budhi Setiawan – Lecturer, Department of Pharmacology, Faculty of Medicine, Wijaya Kusuma University, Surabaya, East Java, Indonesia. <https://orcid.org/0000-0001-6858-5656>.

Kartika Ishartadiati – Lecturer, Department of Parasitology, Faculty of Medicine, Wijaya Kusuma University, Surabaya, East Java, Indonesia. <https://orcid.org/0000-0001-7479-0648>.

Sri Lestari Utami – Lecturer, Department of Biomedicine, Faculty of Medicine, Wijaya Kusuma University, Surabaya, East Java, Indonesia. <https://orcid.org/0000-0001-8218-5966>.

Jimmy Hadi Widjaja – Lecturer, Department of Pathology and Anatomy, Faculty of Medicine, Wijaya Kusuma University, Surabaya, East Java, Indonesia. <https://orcid.org/0000-0002-3599-2287>.

The effects of tempe extract on the oxidative stress marker and lung pathology in tuberculosis Wistar rat

ORIGINALITY REPORT

19%

SIMILARITY INDEX

11%

INTERNET SOURCES

17%

PUBLICATIONS

8%

STUDENT PAPERS

PRIMARY SOURCES

- 1 Fang Dai, Yi Zhang, Dongmei Xu, Chao Liu, Qiongqiong Cao, Li Gui, Yunxia Lu, Qiu Zhang. "Effects of long term diabetogenic high fat diet on bone in ovariectomized female rats", *Biotechnic & Histochemistry*, 2022
Publication <1%
- 2 B. A. Magnuson, G. A. Burdock, J. Doull, R. M. Kroes et al. "Aspartame: A Safety Evaluation Based on Current Use Levels, Regulations, and Toxicological and Epidemiological Studies", *Critical Reviews in Toxicology*, 2008
Publication <1%
- 3 animal-reproduction.org
Internet Source <1%
- 4 he01.tci-thaijo.org
Internet Source <1%
- 5 respiratory-research.biomedcentral.com
Internet Source <1%

6	Qingrui You, Yongge Wu, Yang Wu, Wei Wei et al. "Immunogenicity and protective efficacy of heterologous prime-boost regimens with mycobacterial vaccines and recombinant adenovirus- and poxvirus-vectored vaccines against murine tuberculosis", International Journal of Infectious Diseases, 2012 Publication	<1 %
7	Submitted to University of Bradford Student Paper	<1 %
8	www.atlantis-press.com Internet Source	<1 %
9	Submitted to Aga Khan High School Student Paper	<1 %
10	Submitted to University of Houston System Student Paper	<1 %
11	ir.lib.hiroshima-u.ac.jp Internet Source	<1 %
12	Seon-Hwa Lee, Min-Ho Seo, Deok-Kun Oh. "Deglycosylation of Isoflavones in Isoflavone-Rich Soy Germ Flour by Aspergillus oryzae KACC 40247", Journal of Agricultural and Food Chemistry, 2013 Publication	<1 %
13	Xia Li, Dianxuan Guo, Hualan Zhou, Youdong Hu, Xiang Fang, Ying Chen. "Interplay of pro-	<1 %

inflammatory cytokines, pro-inflammatory microparticles and oxidative stress and recurrent ventricular arrhythmias in elderly patients after coronary stent implantations", *Cytokine*, 2021

Publication

14

J M Waechter. "Sources of uncertainty in pharmacokinetic prediction.", *Journal of animal science*, 01/1983

Publication

<1 %

15

environhealthprevmed.biomedcentral.com

Internet Source

<1 %

16

www.laar.plapiqui.edu.ar

Internet Source

<1 %

17

Bee Ling Tan, Mohd Esa Norhaizan. "Rice By-products: Phytochemicals and Food Products Application", Springer Science and Business Media LLC, 2020

Publication

<1 %

18

Naglaa Abd elkhalek,. "OVARIAN RESERVE PARAMETERS IN WOMEN USING NO CONTRACEPTION, USING ORAL CONTRACEPTION OR IUCD", *Al-Azhar Journal of Pharmaceutical Sciences*, 2017

Publication

<1 %

19

Riswanto Florentinus Dika Octa, Rohman Abdul, Pramono Suwidjiyo, Martono Sudibyo.

<1 %

"Soybean (Glycine max L.) isoflavones: Chemical composition and its chemometrics-assisted extraction and authentication",
Journal of Applied Pharmaceutical Science,
2020

Publication

20

Szilvia Czigle, Rita Filep, Ema Balažová, Hajnalka Szentgyörgyi et al. "Antioxidant Capacity Determination of Hungarian-, Slovak-, and Polish-Origin Goldenrod Honeys",
Plants, 2022

Publication

21

Zhou, Ya-Lin, Rui Wang, Xia Feng, and Xin Zhao. "Preventive effect of insect tea against reserpine-induced gastric ulcers in mice",
Experimental and Therapeutic Medicine, 2014.

Publication

22

www.sphinxesai.com

Internet Source

23

goums.ac.ir

Internet Source

24

lewis.wpdev.gsu.edu

Internet Source

25

www.tobaccopreventioncessation.com

Internet Source

26

Submitted to The University of Texas at Arlington

<1 %

<1 %

<1 %

<1 %

<1 %

<1 %

<1 %

27

Chien Hwa Chong. "Drying Models and Quality Analysis of Sun-Dried Ciku", *Drying Technology*, 09/2009

Publication

<1 %

28

medicopublication.com

Internet Source

<1 %

29

Dong-Jin Shin, Juhui Choe, Ko-Eun Hwang, Cheon-Jei Kim, Cheorun Jo. " Antioxidant effects of lotus () root and leaf extracts and their application on pork patties as inhibitors of lipid oxidation, alone and in combination ", *International Journal of Food Properties*, 2019

Publication

<1 %

30

Hui Li, Yanxiong Pan, Zhongyu Yang, Jiajia Rao, Bingcan Chen. "Improving Antioxidant Activity of β -Lactoglobulin by Nature-Inspired Conjugation with Gentisic Acid", *Journal of Agricultural and Food Chemistry*, 2019

Publication

<1 %

31

Jin-Hee Choi, Nami Kim, Gye-Woong Kim, Hae Yeon Choi. "Effect of Cacao Nip Extracts (CEs) on Quality Characteristics of Pork Patties during Cold Storage Period", *Food Science of Animal Resources*, 2019

Publication

<1 %

32

P J Gehring. "The importance of non-linear (dose-dependent) pharmacokinetics in hazard assessment.", Journal of environmental pathology and toxicology, 1977

Publication

<1 %

33

www.kpubs.org

Internet Source

<1 %

34

Jiang Hu, Sun-Ok Lee, Suzanne Hendrich, Patricia A. Murphy. "Quantification of the Group B Soyasaponins by High-Performance Liquid Chromatography", Journal of Agricultural and Food Chemistry, 2002

Publication

<1 %

35

Abbes, S.. "Preventive role of aluminosilicate clay against induction of micronuclei and chromosome aberrations in bone-marrow cells of Balb/c mice treated with Zearalenone", Mut.Res.-Genetic Toxicology and Environmental Mutagenesis, 20070728

Publication

<1 %

36

Ewelina Jamróz, Joanna Tkaczewska, Marzena Zając, Paulina Guzik et al. "Utilisation of soybean post-production waste in single- and double-layered films based on furcellaran to obtain packaging materials for food products prone to oxidation", Food Chemistry, 2022

Publication

<1 %

37	www.springer.com Internet Source	<1 %
38	Submitted to University of Minnesota System Student Paper	<1 %
39	Submitted to University of Oxford Student Paper	<1 %
40	Warunya Samruan, Piyawan Gasaluck, Ratchadaporn Oonsivilai. "Total Phenolic and Flavonoid Contents of Soybean Fermentation by <i>Bacillus subtilis</i> SB-MYP-1", Advanced Materials Research, 2014 Publication	<1 %
41	Wojdylo, A.. "Antioxidant activity and phenolic compounds in 32 selected herbs", Food Chemistry, 2007 Publication	<1 %
42	westminsterresearch.westminster.ac.uk Internet Source	<1 %
43	Murilo Kenji Kawasaki, Diogo Dias do Prado, Diego de Souza Lima Fonseca, Leonardo de Faria Morato et al. "Palliative stereotactic ablative body radiotherapy reirradiation for high volume head and neck cancer", Research Square Platform LLC, 2023 Publication	<1 %

44

Souframanien Jegadeesan, Kangfu Yu. "Food Grade Soybean Breeding, Current Status and Future Directions", IntechOpen, 2020

Publication

<1 %

45

Submitted to Wilkes University

Student Paper

<1 %

46

Brij Pal Singh, Shilpa Vij. "α-Galactosidase activity and oligosaccharides reduction pattern of indigenous lactobacilli during fermentation of soy milk", Food Bioscience, 2018

Publication

<1 %

47

Robert Deicher, Walter H. Hörl. "Vitamin C in Chronic Kidney Disease and Hemodialysis Patients", Kidney and Blood Pressure Research, 2003

Publication

<1 %

48

turkjps.org

Internet Source

<1 %

49

Submitted to AUT University

Student Paper

<1 %

50

article.sapub.org

Internet Source

<1 %

51

Battaglia, A.. "Selective synthesis of 14@b-amino taxanes", Tetrahedron, 20050808

Publication

<1 %

52 Chitchanok Nutalaya, Montakarn Chaikumarn. <1 %
"Knee Joint Load Reduction by using Lateral
Wedge Insole in Different Body Mass Index
Level Females", Asian Journal of Applied
Sciences, 2019
Publication

53 Diana Estefania Ramos Peña, Lara Maria
Alencar Ramos Innocentini, Maria Conceição
Pereira Saraiva, Alan Grupioni Lourenço et al. <1 %
"Oral candidiasis prevalence in human
immunodeficiency virus-1 and pulmonary
tuberculosis coinfection: A systematic review
and meta-analysis", Microbial Pathogenesis,
2021
Publication

54 Submitted to Endeavour College of Natural <1 %
Health
Student Paper

55 Submitted to Universiti Tunku Abdul Rahman <1 %
Student Paper

56 healthdocbox.com <1 %
Internet Source

57 jurnal.ugm.ac.id <1 %
Internet Source

58 www.cdc.gov <1 %
Internet Source

59

www.koreascience.kr

Internet Source

<1 %

60

Chi-Tai Yeh, Gow-Chin Yen. "Effect of vegetables on human phenolsulfotransferases in relation to their antioxidant activity and total phenolics", *Free Radical Research*, 2009

Publication

<1 %

61

Howard E Morgan, Dylan Dillaway, Thea M Edwards. " Estrogenicity of soybeans () varies by plant organ and developmental stage ", *Endocrine Disruptors*, 2014

Publication

<1 %

62

Ivanor Zardo, Andressa de Espíndola Sobczyk, Ligia Damasceno Ferreira Marczak, Julia Sarkis. "Optimization of Ultrasound Assisted Extraction of Phenolic Compounds from Sunflower Seed Cake Using Response Surface Methodology", *Waste and Biomass Valorization*, 2017

Publication

<1 %

63

Tan, Joash, Wei Yap, Shen Tan, Yau Lim, and Sui Lee. "Antioxidant Content, Antioxidant Activity, and Antibacterial Activity of Five Plants from the Commelinaceae Family", *Antioxidants*, 2014.

Publication

<1 %

64

Tanimoto, M.. "Effect of pyridoxamine (K-163), an inhibitor of advanced glycation end products, on type 2 diabetic nephropathy in KK-A^y/Ta mice", *Metabolism*, 200702

Publication

<1 %

65

research-repository.uwa.edu.au

Internet Source

<1 %

66

Akihiro Higuchi, Ryuji Ueno, Shigeto Shimmura, Makoto Suematsu, Murat Dogru, Kazuo Tsubota. "Albumin Rescues Ocular Epithelial Cells from Cell Death in Dry Eye", *Current Eye Research*, 2009

Publication

<1 %

67

Cheng Bei, Junhao Zhu, Peter H Culviner, Eric J. Rubin, Sarah M Fortune, Qian Gao, Qingyun Liu. "Genetically encoded transcriptional plasticity underlies stress adaptation in *Mycobacterium tuberculosis*", Cold Spring Harbor Laboratory, 2023

Publication

<1 %

68

Chi-Te Liu, Mei-Hui Erh, Shin-Pin Lin, Kai-Yin Lo, Kuan-I Chen, Kuan-Chen Cheng. "Enrichment of two isoflavone aglycones in black soymilk by NTU 5 in a plastic composite support bioreactor ", *Journal of the Science of Food and Agriculture*, 2016

Publication

<1 %

69

E. García Vázquez, J.A. Martínez, J. Mensa, F. Sánchez, M.A. Marcos, A. de Roux, A. Torres. "C-reactive protein levels in community-acquired pneumonia", *European Respiratory Journal*, 2003

Publication

<1 %

70

Felícito García-Alvarez. "Effect of age on cytokine response in an experimental model of osteomyelitis", *Biogerontology*, 01/04/2009

Publication

<1 %

71

Joel Isanga. "Soybean Bioactive Components and their Implications to Health - A Review", *Food Reviews International*, 4/2008

Publication

<1 %

72

Submitted to Manhattan College

Student Paper

<1 %

73

See Wan Yan, Rajesh Ramasamy, Noorjahan Banu Mohamed Alitheen, Asmah Rahmat. "A Comparative Assessment of Nutritional Composition, Total Phenolic, Total Flavonoid, Antioxidant Capacity, and Antioxidant Vitamins of Two Types of Malaysian Underutilized Fruits (and)", *International Journal of Food Properties*, 2013

Publication

<1 %

74

Tonna A. Anyasi, Afam I.O. Jideani, Godwin A. Mchau. "Morphological, physicochemical, and

<1 %

antioxidant profile of noncommercial banana cultivars", Food Science & Nutrition, 2015

Publication

75

erc.bioscientifica.com

Internet Source

<1 %

76

vinar.vin.bg.ac.rs

Internet Source

<1 %

77

www.ajol.info

Internet Source

<1 %

78

Andreas Daiber, Sebastian Steven, Alina Weber, Vladimir V. Shuvaev et al. "Targeting vascular (endothelial) dysfunction", British Journal of Pharmacology, 2017

Publication

<1 %

79

Seung Yun Lee, Da Young Lee, On You Kim, Hea Jin Kang, Hyeong Sang Kim, Sun Jin Hur. "Overview of Studies on the Use of Natural Antioxidative Materials in Meat Products", Food Science of Animal Resources, 2020

Publication

<1 %

80

Shuiqiang Yu, Jinmao You, Xinxin Shi, Xiacong Zou, Zhihao Lu, Yu Wang, Cuihua Song. "New Fluorescence Derivatization Reagent for the Determination of 7 Unsaturated Fatty Acids in Oil Samples by Pre-Column Derivatization HPLC-FLD", Research Square Platform LLC, 2023

Publication

<1 %

81 Zhiliang Huang, Baowu Wang, Doris H. Eaves, James M. Shikany, Ralphenia D. Pace. "Total phenolics and antioxidant capacity of indigenous vegetables in the southeast United States: Alabama Collaboration for Cardiovascular Equality Project", International Journal of Food Sciences and Nutrition, 2009
Publication <1 %

82 eprints.gla.ac.uk
Internet Source <1 %

83 Iskandar Azmy Harahap, Joanna Suliburska. "Probiotics and Isoflavones as a Promising Therapeutic for Calcium Status and Bone Health: A Narrative Review", Foods, 2021
Publication <1 %

84 Medard Beyanga, Benson R. Kidenya, Lisa Gerwing-Adima, Eleanor Ochodo, Stephen E. Mshana, Christa Kasang. "Investigation of household contacts of pulmonary tuberculosis patients increases case detection in Mwanza City, Tanzania", BMC Infectious Diseases, 2018
Publication <1 %

Exclude quotes Off

Exclude matches Off

Exclude bibliography Off

