

Potential improvement in the safety and quality of traditional fermented soybean products: A narrative review

by Budhi Setiawan

Submission date: 28-Aug-2023 06:38PM (UTC+0700)

Submission ID: 2152701307

File name: 10._600-Review_article-3156-1-10-20220422.pdf (470.96K)

Word count: 9065

Character count: 51600

Review

70

Potential improvement in the safety and quality of traditional fermented soybean products: A narrative reviewBudhi Setiawan¹, Nugroho Eko Wirawan Budiarto¹, Masfufatun²¹Department of Pharmacology, Medical Faculty, University of Wijaya Kusuma Surabaya, Dukuh Kupang XXV/54 Surabaya 60225, Indonesia²Department of Biochemistry, Medical Faculty, University of Wijaya Kusuma Surabaya, Dukuh Kupang XXV/54 Surabaya 60225, Indonesia**Abstract**

Soybeans are one of the most significant crops in the world due to their nutritionally valuable. It has been converted to produce a variety of fermented soybean products. During conventional soybean fermentation, microorganisms are involved, biochemical reactions occur, and bioactive components are produced. With the rise of people's living standards, customers are paying more attention not only to the flavor and nutrition of fermented soybean meals, but also to their safety and quality. Mycotoxins, biogenic amine production, and high salt content are among the public health concerns associated with fermented soybean foods. This paper reviews the prevalent concerns about the safety and quality of fermented soybean foods, as well as potential improvements. Attempts and methods have been proposed to ensure the safety of the fermentation process and food quality. Official regulations, the employment of suitable microbes, the use of high-quality cultivars, and the administration of chemicals are all viable options for improving safety and quality. We conclude that implementing international food standards, guidelines, and codes of practice such as the Codex Alimentarius for fermented soybean products and the application of scientific novel methods (e.g., starter combination, high-pressure processing, or low-dose gamma irradiation, additive usage, low salt fermentation technique) are the potential solutions to mitigate the issues and improve the safety and quality of the products.

Keywords: Fermentation, soybean safety, quality, food, nutrition

Received: September 25, 2021 Revised: April 09, 2022 Accepted: April 11, 2022

40

Introduction

Soybean (*Glycine max* [L.] Merrill) is a low-cost major protein source for the human diet that can be utilized as a meat substitute (Xiang et al., 2019). Soy-based foods are known as non-fermented (soymilk, okara, tofu, yuba, soy nuts, etc.) and fermented (miso, tempe, sufu, natto, etc.) (Liu, 2008). Several studies have reported that fermenting soybeans results in numerous beneficial properties. The fermentation procedure can shorten cooking time, improve the nutritional quality of soybeans, boost bioactive components such as phytoestrogens, and make soybeans more digestible (Chen et al., 2016). Some fermented soybean products (FSPs) are often used as condiments to stimulate the appetite and improve food flavor (Xiang et al., 2019).

It is widely known that anti-nutritional substances included in whole soybeans have a deleterious impact on nutrient and micronutrient absorption. Whole soybeans contain anti-nutritional factors such as trypsin inhibitor, lectins, phytic acid, and oligosaccharides, raising concern for their consumption (Thakur et al., 2019). Briefly, it has a negative effect on nutrient absorption and utilization, as well as vitamin degradation (Thakur et al., 2019). This impact can trigger nutrient deficiencies, which can lead to a variety of health-related issues, particularly in animals. The trypsin inhibitor acts negatively in unfermented soybean has a negative impact on the

growth performance and pancreas weight of broiler chickens (Hoffman et al., 2019; Hemetsberger et al., 2021).

Studies have shown that microorganisms used in conventional fermentation are capable of producing toxins that contaminate FSPs (Chen et al., 2016). For example, *Rhizopus microspores*, a popular species employed as a soybean fermentation starter, can produce two types of mycotoxins, rhizoxins and rhizonins. These mycotoxins are present in tempe (an Indonesian fermented soybean cake) and fermented bean curd (a fermented soybean paste) (Rohm et al., 2010). *Aspergillus oryzae*, which is often employed in traditional soybean fermentation, also produces toxic secondary metabolites, such as cyclopiazonic acid, aspergillomarasmine, 3-nitropropionic acid, kojic acid, maltoryzine, and violacetin (Blumenthal, 2004).

Biogenic amines (BA), harmful substances generated during the fermentation process, are frequently identified in substantial concentrations in fermented soybean products from Korea, China, Japan, and Indonesia (Park et al., 2019). Certain fermented soybean products, such as fermented bean curd, soy sauce, douchi, and dajiang, are typically stored without being sterilized, but with a high salt content. This technique prevents spoilage and extends the shelf life of the food (Chen et al., 2016; Liu et al., 2020). However, an excessive intake of salt may result in an expansion in circulating volumes and lead to an increase in blood pressure in humans (Kommenov et al., 2019). As such, this narrative review will evaluate the issues associated with the safety and quality of commonly fermented soybean products and offer some potential solutions.

* Corresponding Author:

Budhi Setiawan
Department of Pharmacology, Medical Faculty, University of
Wijaya Kusuma Surabaya, Dukuh Kupang XXV/54 Surabaya
60225, Indonesia
Phone: +6287751644522 Fax: -
E-mail: budhisetiawan@uwks.ac.id

Inconsistency of quality improvement

Traditionally fermented soybean foods are typically prepared using traditional fermentation process. There are numerous methods for producing indigenous soy-based foods (Figure 1). Asian countries offer a variety of fermented soybean preparation products based on traditional customs (Table 1). Standard quality procedures are not followed properly throughout the typical fermentation process, resulting in varied outcomes for fermented soybean products. Numerous elements contribute to the consistency of quality for particular fermented soybean food. For instance, the quality of tempe (Indonesia's fermented soybean cake)

might be influenced by soybeans, process water, yeast, fermentation time, and fermentation temperature (Novita & Abidin, 2020). In daily practice, fermentation is a complicated process, and the final product's quality is highly dependent on a variety of factors, including geographical location, the environment, weather, seasons, etc. (Liu et al., 2020). For instance, there is a possibility in Indonesia that the small-scale industry of fermented soybean business may fall short of achieving the government's national food quality and safety criteria due to environmental factors and raw materials (Anggriawan, 2018; Kadar et al., 2021).

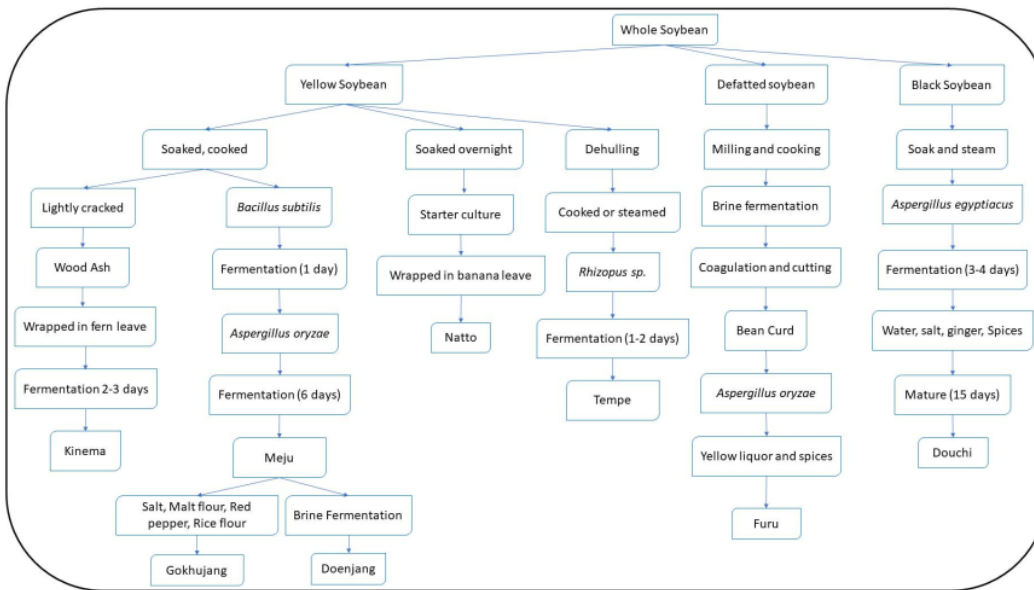


Figure 1. Different methods of soybean fermentation process

Table 1. Countries' distribution and variety of fermented soybean products

Country	Local name	63 roorganism	References
India	Bekang	<i>B. subtilis</i> , <i>B. licheniformis</i> , <i>B. pumilus</i> , <i>Bacillus cereus</i> , <i>Motiliquefaciens</i>	Chettri & Tamang, (2014); Singh et al., (2014a, 2014b)
	Tungrymbai	<i>B. subtilis</i> , <i>B. pumilus</i> , <i>B. licheniformis</i> , <i>B. amyloliquefaciens</i> , <i>B. obacillus brevis</i> ,	
Japan	Hawaijar	<i>B. subtilis</i> , <i>B. licheniformis</i> , <i>B. amyloliquefaciens</i> , <i>B. cereus</i> , <i>Bacillus subtilis</i> , <i>Pediococcus acidilactici</i> , <i>Leuconostoc mesenteroides</i> , <i>Micrococcus halobius</i> , <i>Aspergillus oryzae</i> , <i>Zygosaccharomyces rouxii</i> and <i>Torulopsis sp</i>	Tamang et al., (2016)
	Miso		
Indonesia	Natto	<i>Bacillus subtilis</i> , <i>Aspergillus oryzae</i>	Liu, (2012)
	Kecap	<i>Rhiz. oligosporus</i> , <i>Rhiz. oryzae</i> , <i>Asp. oryzae</i> , <i>Ped. halophilus</i> , <i>Staphylococcus sp.</i> , <i>Candida sp.</i> , <i>Debaromyces sp.</i> , <i>Sterigmatomyces sp.</i>	Alexandraki et al., (2013)
	Tauco	<i>Rhiz. oryzae</i> , <i>Rhiz. ologosporus</i> , <i>Asp. oryzae</i> , <i>Zygosaccharomyces soyae</i> , <i>Bacillus sp.</i> , <i>Ent. hermanniensis</i> , <i>Lb. agilis</i> , <i>Lb. brevis</i> , <i>Lb. buchneri</i> , <i>Lb. crispatus</i> , <i>Lb. curvatus</i> , <i>Lb. delbrueckii</i> , <i>Lb. farciminis</i> , <i>Lb. fermentum</i> , <i>Lb. pantheris</i> , <i>Lb. salivarius</i> , <i>Lb. vaccinostereus</i> , <i>Lc. lactis</i> , <i>Lactococcus sp.</i> , <i>Leuc. camosum</i> , <i>Leuc. citreum</i> , <i>Leuc. fallax</i> , <i>Leuc. lactis</i> , <i>Leuc. mesenteroides</i> , <i>Leuc. pseudomesenteroides</i> , <i>Ped. acidilactici</i> , <i>Strep. bovis</i> , <i>Strep. macedonicus</i> , <i>W. cibaria</i> , <i>W. confusa</i> , <i>W. paramesenteroides</i> , <i>W. soli</i>	
Korea	Chungkookjang	<i>Bacillus amyloliquefaciens</i> , <i>B. licheniformis</i> , <i>Bacillus megaterium</i> , and <i>B.subtilis</i> , <i>Leuconostoc</i> , <i>Lactobacillus</i> , <i>Pseudomonas</i> , <i>Pantoea</i> and <i>Weissella</i> genera	Hong et al. (2012)
	Doenjang	<i>B. subtilis</i> , <i>B. licheniformis</i> , <i>B. pumilus</i> , <i>Mucor plumbeus</i> ,	

		<i>Aspergillus oryzae</i> , <i>Debaryomyces hansenii</i> , <i>Leuconostoc mesenteroides</i> , <i>Tor. halophilus</i> , <i>Lactobacillus sp.</i>	(2016)
	Gochujang	<i>B. velezensis</i> , <i>B. amyloliquefacious</i> , <i>B. subtilis</i> , <i>B. licheniformis</i> , <i>Oceanobacillus spp.</i> <i>Zygosaccharomyces</i> , <i>Candida</i> 87 <i>is</i> , <i>Zygorouxii</i> , <i>Aspergillus</i> , <i>Penicillium</i> , <i>Rhizopus</i>	Nam et al., (2012); Jang et al., (2019); Sanni et al., (1991)
	Meju	<i>Bacillus cereus</i> , <i>B. circulans</i> , <i>B. licheniformis</i> , <i>B. megaterium</i> , <i>B. mesentericus</i> , <i>B. subtilis</i> , <i>B. pumilus</i> , <i>Aspergillus spp.</i> , <i>Botrytis cinerea</i> <i>Rhizopus oryzae</i> , <i>Rhodotorula flava</i> , <i>Zygosaccharomyces japonicus</i> , <i>Lactobacillus sp.</i> , <i>Ped. acidilactici</i>	
	Kanjang	<i>Asp. oryzae</i> , <i>B. subtilis</i> , <i>B. pumillus</i> , <i>B. citreus</i> , <i>Sarcina mazima</i> , <i>Sacch. rouxii</i>	Shin, (2012)
China	Furu	<i>B. pumilus</i> , <i>B. megaterium</i> , <i>B. stearothermophilus</i> , <i>B. firmus</i> , <i>Staphylococcus hominis</i>	Lin et al., (2016)
	Yandou	<i>B. subtilis</i>	Qin, (2013); Ouoba, (2005); Rabie, (2009); Sanni, (2002)
Taiwan	Jiang-sun	<i>Lb. plantarum</i> , <i>Ent. faecium</i> , <i>Lc. lactis subsp. lactis</i>	Chen, (2010)
China, Taiwan	Douchi	<i>B. amyloliquefaciens</i> , <i>B. subtilis</i> ,	Yang et al., (2019a, 2019b)
	Meitauza	<i>B. subtilis</i> , <i>Asp. oryzae</i> , <i>Rhiz. oligosporus</i> , <i>Mu. meitauza</i> , 92 <i>nomucor elegans</i>	Zhu et al., (2008)
India, Nepal, Bhutan	Kinema	<i>B. subtilis</i> , <i>B. licheniformis</i> , <i>B. cereus</i> , <i>B. circulans</i> , <i>B. thuringiensis</i> , <i>B. sphaericus</i>	Chettri et al., (2016); Chettri & Tamang, (2015); Singh et al., (2014a, 2014b)
Japan, Korea, China	Shoyu	<i>Asp. oryzae</i> or <i>Asp. sojae</i> , <i>Z. rouxii</i> , <i>C. versatilis</i>	Sugawara, (2010).
Indonesia (Origin), Netherlands, Japan, USA	Tempe	<i>Bacillus pumilus</i> and <i>B. brevis</i> , <i>Rhizopus spp.</i> , <i>Lactobacillus casei</i>	Frias et al., (2017)

Regulatory implications

Despite fermented soybean products are generally considered safe, there are still health risks associated with improperly fermented soybean products, which are produced under inadequate hygienic standards and uncontrolled conditions, especially in household industry settings. It has been claimed that traditional fermented soybean products marketed in Northeast India are contaminated with pathogens (*Bacillus cereus*, *Clostridium botulinum*, *Escherichia coli*, *Proteus mirabilis*) (Keisam et al., 2019). To improve hygienic standards and safeguard community health, various food safety assurance systems should be implemented, such as education and information, starting culture utilization, high-quality raw materials, and ideal fermentation conditions (Tamang et al., 2020). Standardization of the manufacturing process is necessary to provide consistent quality, particularly in small-scale industry settings (Anal, 2019).

There 55 a variety of certification schemes available, including Good Manufacturing Practices (GMP), Good Agricultural Practices (GAP), Good Hygienic Practices (GHP), Hazard A 105 *Analysis Critical Control Points (HACCP)*, and International Organization for Standardization (ISO) standards. One or more of these certifications should be implemented and supported by government policies in order to eliminate public health concerns associated with fermented soy products, particularly in small scale industrial settings. Having Codex Alimentarius registration for fermented soybean products, such as kimchi, gochujang, and doenjang, will improve the quality standard, particularly in international trade and commerce (Lee et al., 2012). Food safety and quality audits are also commonly used to ensure the compliance and effectiveness of food safety initiatives. Audits are commonly used to evaluate management systems, check the state of premises and products, and certify that they meet specified food safety and quality requirements (Kotsanopoulos & Arvanitoyannis, 2017).

There are specific fermented soybe 79 product standards that can be followed, such as the Codex Alimentarius regional standard for fermented soybean paste (Asia) CODEX STAN 298R-2009 or Indonesian nation 82 standard SNI 3144:2009 for tempe. However, the goal of food safety and quality audits should be one of continuous development rather than one-time evaluation results or policing (Bradford-Knox, 2017).

Anti-nutritional factor

Numerous processing techniques, such as soaking, pressure cooking, blanching, germination, fermentation, autoclaving, genetic editing, and other methods, all assist in reducing the anti-nutrient effects (Thakur et al., 2019; ten Brink et al., 1990). It is feasible to reduce the antinutrient content of meals by utilizing any of these varied strategies alone or in combination (ten Brink et al., 1990). It has been suggested that autoclaving may be a more effective method than other processing methods for reducing levels of several anti-nutritional components (Santiya et al., 2020). However, further study is still required to develop strategies for removing heat-stable anti-nutritional components found in a vari 56 of foods without impairing their nutritional content. Phytic acid, tannins, alkaloids, saponins, and non-protein amino acids are examples of heat-stable antinutritional factors, whereas lectins, cynogenic glycosides, and protease inhibitors are examples of heat-labile antinutritional factors. These substances are found in a variety of grain legumes, including soybeans (Thakur et al., 2019). When present in trace amounts, several anti-nutritional agents and their metabolites may have beneficial health benefits such as decreased blood glucose and lipid levels, as well as a decreased risk of cancer. In contrast, a lack of understanding and information about their properties can lead to health issues (Gemedé & Ratta, 2014).

Innovative fermentation techniques with specific microbes have been used to lower the level of anti-nutritional elements in fermented soybean products, such

as soybean meal. Fermentation of soybean meal protein with *Bacillus siamensis* isolate JL8 resulted in a significant reduction of major antinutritional factors (ANFs) in soybean meal (SBM), specifically glycinin, beta-conglycinin, and trypsin inhibitor, which were reduced by 86.0%, 70.3%, and 95.01%, respectively (Zheng et al., 2017). After 24 hours, a comparable study using solid-state *Bacillus subtilis* fermentation was able to lower the quantities of beta-conglycinin subunits, glycinin subunits, and trypsin inhibitors in soybean meal by 70%, 50%, and 58%, respectively (Seo & Cho, 2016). Additionally, soybean meal fermentation at 35 °C with an appropriate proportion of *Bacillus subtilis*, *Bacillus lactis*, and *Saccharomyces cerevisiae* might increase the levels of free amino acids and short peptides while decreasing the activity of protease inhibitors (Zhang et al., 2017).

Mycotoxin contamination

The common microorganisms involved in FSPs, especially in the traditional fermentation process, have been described (Table 1). Mycotoxins are secondary metabolites of molds that may be harmful to humans or animals when consumed and may also have unfavorable effects on crops (Zain, 2011). When mycotoxins are inhaled, they can induce acute disease or persistent illness episodes known as mycotoxicosis. Due to mycotoxin's extreme toxicity, exposure should be limited to a minimum. Different countries have set their own maximum levels of aflatoxins in food for humans, which range from 5 to 50 g/kg (Wu, 2004) and 4 to 5 g/kg for beans (Wu, 2004). The term "mycotoxin" originates from the Greek word "mykes", which means fungus, and the Latin word "toxicum" which means poison or toxin (Kirovska & Velickova, 2021). Mycotoxin is produced during fungal growth and is detected in the hyphae and spores of organisms. Numerous mycotoxins have been detected in fermented food products, including aflatoxins, ochratoxins, deoxynivalenol (DON), trichothecenes, zearalenone, and citrinin (Omotayo et al., 2019; Sivamaruthi et al., 2019). Although aflatoxin contamination is more prevalent in crops such as peanuts and maize, a prior study discovered that soybean seeds contained more than 20 aflatoxins (Roy et al., 2001). Some trichothecene mycotoxins, such as DON and T-2 toxins (a trichothecene produced by *Fusarium* spp.) can cause direct damage to mucosal tissues by disrupting the intestinal epithelial barrier, hence facilitating translocation of intestinal commensal microbiota, and pathogens. As a result, microorganism infection and inflammation may be increased (Nazhand et al., 2020). Aflatoxin (AF) is a prevalent mycotoxin produced by *Aspergillus flavus*, *A. parasiticus* and *A. nomius*. Aflatoxins are formed chemically from difuranocoumarins with bifuran-based coumarin nuclei groups and lactone rings (Aflatoxin Gs) or pentanone rings (Aflatoxin Bs and Aflatoxin Ms). During the biosynthesis of AF in plants by *A. flavus* and *A. parasiticus*, the main substrate of hexanoyl is converted to polyketide via a polyketide synthase and two fatty acid synthases (Nazhand et al., 2020).

It has been reported that 97.5% of tested samples of 40 domestic and imported (from Japan) soy sauces sold in China were contaminated with DON. Domestic soy sauces had a mean incidence rate of DON contamination of 97.1%, with concentrations ranging from 4.5 to 1245.6 g/l, whereas those imported from Japan had a mean incidence rate of 100%, with concentrations ranging from 30.5-238.3 g/l (Zhao et al., 2013). Meju prepared without additives may result in the isolation of *Aspergillus ruber*, which releases aflatoxin B₁ and ochratoxin A (Shukla et al., 2017). *Aspergillus oryzae* and *Aspergillus sojae* are frequently employed in the fermentation of soybeans to produce soy sauce and miso. These strains are closely related to the aflatoxigenic fungi *Aspergillus flavus* and *Aspergillus parasiticus*. While it has been demonstrated that these fermented soybean products do not create aflatoxin, they may contain homologs of numerous aflatoxin production pathway genes (Shukla et al., 2017). Aflatoxin is frequently found in doenjang, which is made through inoculation with a natural starter. The aflatoxigenic *Aspergillus flavus* is identified as the fungal community present throughout conventional manufacturing (Zain, 2011).

Mycotoxin mitigation

Official regulation and policy are critical in reducing mycotoxin levels in foods in many countries. In 2003, the FAO reported that at least 99 nations regulated mycotoxins in food and/or feed. The number of countries has increased by around 30% compared to 1995. These countries collectively account for around 87% of the world's population ("Worldwide Regulations for Mycotoxins in Food and Feed in 2003" n.d.). Additionally, novel approaches for reducing mycotoxin levels in fermented soybean products should be studied. For instance, fermentation of Meju with plant extracts (*Nelumbo nucifera* leaves, *Ginkgo biloba* leaves, and *Allium sativum* cloves) has a substantial effect on the fungal microflora, resulting in an enhancement in the product's quality. This outcome could be explained by the extracts' diminished activity against toxin-producing fungal infections (Shukla et al., 2017).

Biogenic amines

Biogenic amines (Bas) are low molecular weight, non-volatile nitrogenous bases with an aliphatic, aromatic, or heterocyclic structure that have been identified in fermented foods such as miso, chunjang, jajang, and sufu (Komprda et al., 2007; Pachlová et al., 2012; Renes et al. 2014; Alvarez & Moreno-Arribas 2014; Bai et al., 2013; Lee et al., 2019; Shukla et al., 2010; Guan et al., 2013; Byun & Mah, 2012). The biogenic amine is named for the amino acid from which it is produced. For instance, histamine is created when histidine is decarboxylated, while tyramine is formed when tyrosine is decarboxylated (Santos, 1996). Biogenic amines are formed in foods as a result of the presence of bacteria capable of decarboxylation of specific amino acids (Renes et al., 2014; Bover-Cid et al., 2003; Buňková et al., 2013). The bacteria with amino acid-decarboxylase activity are *Pseudomonas*,

Clostridium, *Bacillus*, *Photobacterium*, *Enterobacteriaceae* family (*Escherichia*, *Klebsiella*, *Citrobacter*, *Proteus*, *Shigella*, and *Salmonella*), *Micrococcaceae* family (*Staphylococcus*, and *Micrococcus*), *Enterococcus*, *Lactobacillus*, *Carnobacterium*, *Pediococcus*, *Lactococcus*, and *Leuconostoc* (Santos, 1996; Stadnik & Dolatowski, 2010).

BA is generally not harmful to human health in small doses since it can be detoxified by amine oxidase enzymes found in the intestine. The recommended BA values include a maximum of 100 mg/kg histamine in food and 2 mg histamine per liter of alcoholic beverage, a maximum of 100 to 800 mg/kg tyramine in food, and a hazardous dose of 30 mg/kg β -phenylethylamine in food (ten Brink, 1990). Enzymes, such as monoamine oxidase (MAO), diamine oxidase (DAO), and histamine N-methyltransferase (HNMT), can metabolize dietary BA in a healthy human being (Fogel et al., 2007). However, BA can turn into toxic metabolites that might threaten human health when consumed in excess or when humans' detoxifying capacity is limited or damaged (Anderson, 2008; Ruiz-Capillas & Herrero, 2019). Because accumulation of biogenic amines is possible in the presence of uncontrolled microbial enzymatic reactions (Halász et al., 1994), the presence of BA in food is always undesirable, as it can cause headaches, respiratory distress, palpitation, hypo or hypertension, and allergic reactions when absorbed at high concentrations (Restuccia et al., 2015).

Biogenic amine mitigation

The formation of BA in fermented soybean products is a complex process that is influenced by a number of parameters, including the BA-producing strain or species, salt concentration, and high temperatures (Bai et al. 2013; Chun et al. 2020). Salt concentrations may have an effect on the production of BA. This occurs as a result of elevated salt levels, which restrict the growth of microorganisms that make biogenic amino acids, resulting in a decrease in the production of decarboxylase enzymes (Chun et al., 2020; Chin & Koehler, 1986). For example, during fermentation, the amounts of key biogenic amines such as cadaverine and putrescine that were detected from doenjang were higher at 9% salt than at 12%, 15%, and 18% salt (Chun et al. 2020). Thermal breakdown of BA has been demonstrated to occur under high-temperature treatment, such as boiling in Chunjang (black soybean paste). After 10 min of frying at 200 °C, tryptamine and β -phenylethylamine levels are approximately 40% lower. While other BAs, such as cadaverine, histamine, tyramine, spermidine, and spermine, exhibit declines of approximately 10% to 20% (Bai et al., 2013).

Currently, the majority of efforts to develop worldwide regulatory standards for biogenic amines are concentrated on fish and seafood products rather than fermented soybean foods (Park, Lee & Mah, 2019). The suggested toxic limit of BA content in fermented soybean products is 1000 mg/kg (Santos 1996), while the indicated harmful limit of β -phenylethylamine is 30 mg/kg, 100 mg/kg for histamine, and 100 mg/kg for

tyramine (ten Brink et al., 1990). Attempts have been made to minimize the formation of BA in foods through sanitary handling and processing, the use of biogenic amine-degrading starter cultures (e.g. *B. subtilis* and *B. amyloliquefaciens* strains), the addition of some probiotic bacterial strains alone or in combination with the starter cultures, high-pressure processing, and low-dose gamma irradiation (Oh et al., 2014; Kim et al., 2005a; Nices et al., 2005; Zhang et al., 2013). High pressures of 400 MPa for 5 min or 400 MPa for 5 min + 50 MPa for 72 h were able to considerably reduce BA levels to levels comparable to or less than control (Novella-Rodríguez et al., 2002). Gamma-irradiation of raw materials at dosages of 5, 10, and 15 kGy considerably decreased the amounts of histamine, putrescine, tryptamine, and spermidine by approximately 20–50% in the final fermented soybean products (Kim et al., 2003).

To reduce the concentration of BA in fermented soybean foods, one typical method is to employ a starting culture containing bacteria with lower decarboxylase activity (Alvarez & Moreno-Arribas, 2014). The application of *Bacillus subtilis* and *Bacillus amyloliquefaciens* strains can reduce histamine levels in vitro by 27-46% and 70%, and tyramine contents by 42-59% and 71%, respectively (Kim et al., 2012). Additionally, the use of *Lactobacillus plantarum* as a starter culture can reduce histamine and total BA content by 58-100% and 27%, respectively (Lee et al., 2016; Kung et al., 2017). Apart from using BA-deficient bacteria for fermentation, the use of additives has been recommended as an alternative strategy. When ethanol is added to the dressing mixture (red kojic rice, alcoholic beverage, salt, sugar, bean paste, and spices) during sufu fermentation, the BA content reduction decreases. This could be because ethanol inhibits the decomposition of water-soluble proteins during the ripening fermentation process (Qiu et al., 2018). Another addition, such as nicotinic acid, may inhibit the activity of *Enterococcus faecium* isolated from cheonggukjang's tyrosine decarboxylase. It implies that nicotinic acid could be employed as a tyrosine decarboxylase inhibitor to reduce tyramine content in vitro and in situ (Kang et al., 2018). Additionally, the application of gamma irradiation may help lower not just salt consumption but also biogenic amine levels during soybean fermentation (Kim et al., 2005). Though numerous strategies for reducing BA concentration in vitro and in situ have been published, practical implementation is still necessary to ensure the safety of fermented food items (Park et al., 2019).

High salt content

Numerous traditional fermented soybean products are manufactured utilizing salt-intensive processes. Sufu, aying, miso, dajiang, doenjang, and soy sauce are examples of traditional salt-fermented soybean foods; natto, tempe, and kinema are examples of non-salt-fermented soybean products. In general, sufu has a salt content of 5 to 11%, doenjang has a salt concentration of 9 to 18%, soy sauce has a salt concentration of more than 18%, douchi has a salt concentration of 10 to 15%, and dajiang has a salt concentration of more than 10% (Han

89

et al., 2004; Jeong et al., 2014; Chun et al., 2019; Liu et al., 2020). Due to the fact that salt is used to regulate the content of water, it has an effect on microbial growth and fermentation pace. Additionally, salt enhances the sensory quality of fermented soybean products and prolongs their shelf life (Han et al., 2003; Jeon et al., 2016; Shim et al., 2016; Liu et al., 2020).

However, excessive salt consumption can be detrimental to human health and the majority of epidemiological research has demonstrated that salt consumption is dose-dependently linked with blood pressure in participants with normotension and hypertension (Mohan et al., 2009; Graudal et al., 2019). Hypertension is a significant risk factor for heart disease and stroke (He et al., 2009; Kommenov et al., 2019). According to a previous study, hypertension is responsible for 62% of strokes and 49% of coronary heart disease (He et al., 2010). Increased sodium intake has also been linked to a number of adverse health effects, including worsening chronic kidney disease (Borrelli et al., 2021), an increased risk of gastric cancer (Tsugane et al., 2004; Peleteiro et al. 2011; D'Elia et al., 2014), decreased bone density (Teucher et al., 2008; Caudarella et al., 2009) and possible obesity (He et al., 2009; Grimes et al., 2013; Ma et al., 2015). According to guidelines issued by the World Health Organization, adults should consume less than 2000 mg of sodium or 5 g of salt every day (Härtl 2013). Several organizations, including the European Society of Hypertension, the European Society of Cardiology, the American Heart Association, and the American Academy of Physician Assistants, recommend reducing salt consumption (Mancia et al., 2013; Welton et al., 2018). Salt-fermented soybean products are a substantial source of sodium in various nations, including Japan and Korea, and their consumption is positively connected with daily salt consumption (Anderson et al., 2010; Jeong et al., 2014).

A major difficulty in reducing the use of NaCl content in meals has been observed to be a loss in consumer approval (Liem et al., 2011). Efforts have been made to lower sodium concentration while maintaining the physicochemical features and sensory quality of fermented soybean products (Park et al. 2015; Lin et al., 2021). Several novel methods have been developed to produce low salt, or no salt fermented soybean products, such as natto, tempe, and kinema (Wang et al., 2007). In terms of physical strategies, the combination of high pressure and ultrasonic technology appears promising; chemical strategies include the right use of salt substitutes, flavor enhancers, and quality improvers. Biological techniques include functional microbial augmentation and microbial enzymatic technology. Cell fusion techniques and genetic engineering technology could be used in the future to improve the quality and safety of low-sodium fermented meals (Lin et al., 2021).

Potential quality improvement through soybean cultivar selection

Food-grade soybeans are the raw material for fermented and non-fermented soy food products, including tofu, soymilk, miso, natto, soy sprouts, and tempeh. Food-grade soybeans contain greater protein

concentrations than feed-grade soybeans, ranging from 40 to 45% (Jegadeesan et al., 2020). Aside from high protein content, most food-grade cultivars share common characteristics such as low oil content, high seed quality with no mottling or cracking, and rapid water uptake, because most soy food products require a soaking step, thus rapid water uptake is essential (Mullin et al., 2001; Zhang et al., 2010; Anderson et al., 2019). Aside from these characteristics, advancements in soybean breeding and cropping systems provide not only improved chemical composition but also yield preservation through weed, pathogen, insect pest, and abiotic stress resistance (Anderson et al., 2019). The use of cadmium (Cd) safe soybean cultivars for fermentation may help to minimize unwanted metal deposition in the human body caused by Cd-contaminated soil (Zhi et al., 2020; 2015). Accumulation of Cd can occur in soybeans when they are grown on Cd-polluted soil (Arao et al. 2003; Sugiyama et al., 2011). A specific soybean cultivar may be more suitable for various fermented soybean products; for example, the Saedanbaek cultivar delivers higher quality standards than other cultivars (Jinpung, Daepung 2, Pyeongwon, Cheonga, and Saeolkong) during the soy paste fermentation process (Shin et al., 2019). This cultivar has demonstrated the ability to produce greater amylase and protease activities, viscous material amounts, and amino-type nitrogen content (Shin et al., 2019).

Conclusion

Fermented soybean products (FSPs) have piqued the interest of scientists and consumers due to their nutritional values, bioactive components, and flavor profiles and texture. Despite the fact that FSPs are considered safe foods, with the establishment of soybean fermented product standards, people have grown more conscious of the possibility of food-borne illness. Improving the safety and quality of fermented soybean products is critical in order to avoid future public health issues. Antinutritional factors, pathogenic microorganisms and mycotoxins, the formation of biogenic amines, the use of excessive salt concentrations during the fermentation process, and other safety dangers are still major concerns in fermented soybean production. The following characteristics are critical and should be considered in order to promote nutritional quality and safe fermented soybean foods. First and foremost, food regulation policies and standards must be enforced, particularly on industrial soybean fermentation products. Second, using appropriate microorganism strains in a controlled setting will result in a superior conventional soybean fermentation process.

Acknowledgement

The Institute for Research and Community Service of Wijaya Kusuma University, Surabaya, Indonesia, has supported this paper through an internal grant scheme (No. 22/LPPM/UWKS/2021).

References

- Adejumo, T.O., Adejoro, D.O. (2014). Incidence of aflatoxins, fumonisins, trichothecenes and ochratoxins in Nigerian foods and possible intervention strategies. *Food Science and Quality Management*, 31, 127-47.
- Alexandraki, V., Tsakalidou, E., Papadimitriou, K., Holzapfel, W.H. (2013). Status and Trends of the Conservation and Sustainable Use of Microorganisms in Food Processes. *Commission on Genetic Resources for Food and Agriculture*, FAO Background Study Paper No. 65.
- Alvarez, M.A., Moreno-Arribas, M.V. (2014). The Problem of Biogenic Amines in Fermented Foods and the Use of Potential Biogenic Amine-Degrading Microorganisms as a Solution. *Trends in Food Science & Technology*, 39(2), 146-55.
- Anal, A.K. (2019). Quality Ingredients and Safety Concerns for Traditional Fermented Foods and Beverages from Asia: A Review. *Fermentation*, 5(1), 8.
- Anderson, A.K. (2008). Biogenic and Volatile Amine-Related Qualities of Three Popular Fish Species Sold at Kuwait Fish Markets. *Food Chemistry*, 107, 661-676.
- Anderson, C.A., Appel, L.J., Okuda, N., Brown, J.J., Chan, Q., Zhao, L., Ima, H., Kesteloot, H., Miura, K., Curb, J.D., Yoshita, K. (2010). Dietary sources of sodium in China, Japan, the United Kingdom, and the United States, women and men aged 40 to 59 years: the INTERMAP study. *Journal of the American Dietetic Association*, 110(5), 736-745.
- Anderson, E.J., Ali, M.L., Beavis, W.D., Chen, P., Clemente, T.E., Diers, B.W., Graef, J., Grassini, P., Hyten, D.L., McHale, L.K., Nelson, R.L. (2019). Soybean [*Glycine Max* (L.) Merr.] Breeding: History, Improvement, Production and Future Opportunities. In *Advances in Plant Breeding Strategies: Legumes: Volume 7*, edited by Jameel M. Al-Khayri, Shri Mohan Jain, and Dennis V. Johnson, 431-516. Cham: Springer International Publishing.
- Angriawan, R. (2018). Microbiological and Food Safety Aspects of Tempeh Production in Indonesia [Dissertation]. Göttingen, Germany: Georg-August-University Göttingen, Germany
- Arao, T., Ae, N., Sugiyama, M., Takahashi, M. (2003). Genotypic differences in cadmium uptake and distribution in soybeans. *Plant and Soil*, 251(2), 247-53.
- Bai, X., Byun, B.Y., Mah, J.H. (2013). Formation and Destruction of Biogenic Amines in Chunjang (a Black Soybean Paste) and Jajang (a Black Soybean Sauce). *Food Chemistry*, 141(2), 1026-31.
- Blumenthal, C.Z. (2004). Production of Toxic Metabolites in *Aspergillus Niger*, *Aspergillus Oryzae*, and *Trichoderma Reesii*: Justification of Mycotoxin Testing in Food Grade Enzyme Preparations Derived from the Three Fungi. *Regulatory Toxicology and Pharmacology*, 39(2), 214-28.
- Bover-Cid, S., Hernández-Jover, T., Miguélez-Arriazo, M.J., Vidal-Carou, M.C. (2003). Contribution of Contaminant Enterobacteria and Lactic Acid Bacteria to Biogenic Amine Accumulation in Spontaneous Fermentation of Pork Sausages. *European Food Research and Technology*, 216(6), 477-82.
- Bradford-Knox R. (2017). Approaches to and the Management of the Audit Process in the Food Industry. *British Food Journal*, 119(4), 759-70.
- Borrelli, S., Provenzano, M., Gagliardi, L., Ashour, M., Liberti, M.E., De Nicola, L., Conte, G., Garofalo, C., Andreucci, M. (2020). Sodium intake and chronic kidney disease. *International Journal of Molecular Sciences*, 21(13), 4744.
- Buňková, L., Adamcová, G., Hudcová, K., Velichová, H., Pachlová, V., Lorencová, E., Buňka, F. (2013). Monitoring of Biogenic Amines in Cheeses Manufactured at Small-Scale Farms and in Fermented Dairy Products in the Czech Republic. *Food Chemistry*, 141(1), 548-51.
- Byun, B.Y., Mah, J.H. (2012). Occurrence of Biogenic Amines in Miso, Japanese Traditional Fermented Soybean Paste. *Journal of Food Science*, 77(12), T216-23.
- Caudarella, R., Vescini, F., Rizzoli, E., Francucci, C.M. (2009). Salt intake, hypertension, and osteoporosis. *Journal of endocrinological investigation*, 32(4 Suppl), 15-20.
- Chang, M.I., Kim, J.Y., Kim, U.S., Baek, S.H. (2013). Antioxidant, tyrosinase inhibitory, and anti-proliferative activities of gochujang added with cheonggukjang powder made from sword bean. *Korean Journal of Food Science and Technology*, 45(2), 221-226.
- Chen, F., Zhang, X., and Li, Z. (2016). Chapter 26 – Safety of Fermented Products Based on Soybean. In *Regulating Safety of Traditional and Ethnic Foods*, edited by Vishweshwariah Prakash, Olga Martín-Belloso, Larry Keener, Siân Astley, Susanne Braun, Helena McMahon, and Huub Lelieveld, 311-18. San Diego: Academic Press.
- Chen, Y.S., Wu, H.C., C.H., Chen, H.C., Yanagida, F. (2010). Isolation and characterization of lactic acid bacteria from jiang-sun (fermented mung bean shoots), a traditional fermented food in Taiwan. *Journal of the Science of Food and Agriculture*, 90(12), 1977-1982.
- Chettri, R., Tamang, J.P. (2014). Functional properties of tungrymbai and bekaang, naturally fermented soybean foods of North East India. *International Journal of Fermented Foods*, 3(1), 87-103.
- Chettri, R., Tamang, J.P. (2015). Bacillus species isolated from tungrymbai and bekaang, naturally fermented soybean foods of India. *International Journal of Food Microbiology* 197:72-76.
- Chettri, R., Bhutia, M.O., Tamang, J.P. (2016). Poly-γ-glutamic acid (PGA)-producing bacillus species isolated from kinema, Indian fermented soybean food. *Front Microbiol Frontiers*, 7, 971.
- Chin, K.D., Koehler, P.E. (1986). Effect of Salt Concentration and Incubation Temperature on Formation of Histamine, Phenethylamine, Tryptamine and Tyramine During Miso Fermentation. *Journal of Food Protection*, 49(6), 423-27.
- Chun, B.H., Kim, K.H., Jeong, S.E., Jeon, C.O. (2020). The Effect of Salt Concentrations on the Fermentation of Doenjang, a Traditional Korean Fermented Soybean Paste. *Food Microbiology*, 86(April), 103329.
- D'Elia, L., Galletti, F., Strazzullo, P. (2014). Dietary salt intake and risk of gastric cancer. *Advances in Nutrition and Cancer*, 83-95.
- Fogel, W.A., Lewinski, A. (2007). Histamine in Food: Is There Anything to Worry About? *Biochemical Society Transactions*, 35(Pt 2), 349-52.
- Frias, J., Penas, E., Martinez-Villaluenga, C. (2017). Chapter 16 Fermented pulses in nutrition and health promotion. In: *Fermented foods in health and disease prevention*, 385-416
- Gemedo, H.F., Ratta, N. (2014). Antinutritional Factors in Plant Foods: Potential Health Benefits and Adverse Effects. *International Journal of Nutrition and Food Sciences* 3(4), 284.
- Guan, R.F., Liu, Z.F., Zhang, J.J., Wei, Y.X., Wahab, S., Liu, D.H., Ye, X.Q. (2013). Investigation of Biogenic Amines in Sufu (Furu): A Chinese Traditional Fermented Soybean Food Product. *Food Control*, 31(2), 345-52.
- Graudal, N., Hubeck-Graudal, T., Jürgens, G., Taylor, R.S. (2019). Dose-response relation between dietary sodium and blood pressure: a meta-regression analysis of 133 randomized controlled trials. *The American journal of clinical nutrition*, 109(5), 1273-1278.
- Grimes, C.A., Wright, J.D., Liu, K., Nowson, C.A., Loria, C.M. (2013). Dietary sodium intake is associated with total fluid and sugar-sweetened beverage consumption in US children and adolescents aged 2-18 y: NHANES 2005-2008. *The American Journal of Clinical Nutrition*, 98(1), 189-96.
- Halász, A., Barath, A., Simon-Sarkadi, L., Holzapfel, W. (1994). Biogenic Amines and Their Production by Microorganisms in Food. *Trends in Food Science & Technology*, 5(2), 42-49.
- Han, B.Z., Wang, J.H., Rombouts, F.M., Nout, M.R. 2003. Effect of NaCl on Textural Changes and Protein and Lipid Degradation during the Ripening Stage of Sufu, a Chinese Fermented Soybean Food. *Journal of the Science of Food and Agriculture*, 83(9), 899-904.
- Han, B.Z., Cao, C.F., Rombouts, F.M., Nout, M.R. (2004). Microbial changes during the production of Sufu-a Chinese fermented soybean food. *Food Control*, 15(4), 265-270.
- Härtl, G. (2013). WHO issues new guidance on dietary salt and potassium. *Central European Journal of Public Health* 21:16.
- Hemetsberger, F., Hauser, T., Domig, K.J., Kneifel, W., Schedle, K. (2021). Interaction of Soybean Varieties and Heat Treatments and Its Effect on Growth Performance and Nutrient Digestibility in Broiler Chickens. *Animals*, 11(9), 2668.
- Hoffmann, Thurner, S., Ankerst, D., Damme, K., Windisch, W., Brugger, D. (2019). Chickens' Growth Performance and Pancreas Development Exposed to Soy Cake Varying in

- Trypsin Inhibitor Activity, Heat-Degraded Lysine Concentration, and Protein Solubility in Potassium Hydroxide. *Poultry Science*, 98(6), 2489-2499.
- 5 He, F.J., MacGregor, G.A. (2009). A comprehensive review on salt and health and current experience of worldwide salt reduction programmes. *Journal of Human Hypertension* 23(6), 363-384.
- 35 He, F.J., MacGregor, G.A. (2010). Reducing population salt intake worldwide: from evidence to implementation. *Progress in Cardiovascular Diseases*, 52(5): 36-42.
- Hong, S.W., Choi, J.Y., Chung, K.S. (2012). Culture-based and denaturing gradient gel electrophoresis analysis of the bacterial community from Chungkookjang, a traditional Korean fermented soybean food. *Journal of Food Science*, 77, 572-578.
- Jang, M., Jeong, D.W., Lee, J.H. (2019). Identification of the predominant Bacillus, Enterococcus, and Staphylococcus species in meju, a spontaneously fermented soybean product. *Microbiology and Biotechnology Letters*, 47(3), 359-63.
- 58 Jegadeesan, S., Yu, K. (2020). Food Grade Soybean Breeding, Current Status and Future Directions. *Legume Crops: Prospects, Production and Uses*, 27, 51.
- Jeon, H.H., Jung, J.Y., Chun, B.H., Kim, D., Baik, S.Y., Moon, J.Y., Yeo, S.H., Jeon, C.O. (2016). Screening and Characterization of Potential Bacillus Starter Cultures for Fermenting Low-Salt Soybean Paste (Doenjang). *Journal of Microbiology and Biotechnology*, 26(4), 666-74.
- Jeong, D.W., Kim, H.R., Jung, G., Han, S., Kim, C.T., Lee, J.H. (2014). Bacterial community migration in the ripening of doenjang, a traditional Korean fermented soybean food. *Journal of microbiology and biotechnology*, 24(5), 648-660.
- Jeong, Y.S., Lim, H.J., Kim, S.B., Kim, H.J., Son, S.M. (2014). Blood pressure and dietary related risk factors associated with high sodium intake assessed with 24-hour urine analysis for Korean adults. *Korean Journal of Community Nutrition*, 19(6), 537-549.
- Kadar, A.D., Astawan, M., Putri, S.P., Fukusaki, E. (2020). Metabolomics-Based Study of the Effect of Raw Materials to the End Product of Tempe – An Indonesian Fermented Soybean. *Metabolites*, 9(3), 367.
- 47 Kang, H., Kim, H.S., Mah, J.H., Kim, Y.W., Hwang, H.J. (2018). Tyramine Reduction by Tyrosine Decarboxylase Inhibitor in Enterococcus Faecium for Tyramine Controlled Cheonggukjang. *Food Science and Biotechnology*, 27(1), 87-93.
- Keisam, S., Tuikhar, N., Ahmed, G., Jeyaram, K. (2019). Toxigenic and pathogenic potential of enteric bacterial pathogens prevalent in the traditional fermented foods marketed in the Northeast region of India. *International Journal of Food Microbiology*, 295, 21-30.
- Kim, J.H., Ahn, H.J., Kim, D.H., Jo, C., Yook, H.S., Park, H.J., Byun, M.W. (2003). Irradiation effects on biogenic amines in Korean fermented soybean paste during fermentation. *Journal of Food Science*, 68(1), 80-4.
- Kim, J.H., Ahn, H.J., Lee, J.W., Park, H.J., Ryu, G.H., Kang, I.J., Byun, M.W. (2005). Effects of Gamma Irradiation on the Biogenic Amines in Pepperoni with Different Packaging Conditions. *Food Chemistry*, 89(2), 199-205.
- 9 Kim, J.H., Kim, D.H., Ahn, H.J., Park, H.J., Byun, M.W. (2005). Reduction of the Biogenic Amine Contents in Low Salt-Fermented Soybean Paste by Gamma Irradiation. *Food Control*, 16(1): 43-49.
- Kim, M.J., Kwak, H.S., Jung, H.Y., Kim, S.S. (2016). Microbial communities related to sensory attributes in Korean fermented soy bean paste (doenjang). *International Food Research Journal*, 89 (Pt 1), 724-732.
- Kim, Y.S., Cho, S.H., Jeong, D.Y., Uhm, T.B. (2012). Isolation of Biogenic Amines-Degrading Strains of Bacillus subtilis and Bacillus amyloliquefaciens from Traditionally Fermented Soybean Products. *Korean Journal of Microbiology*, 48(3), 220-24.
- Kindossi, J.M., Anihouvi, V.B., Vieira-Dalodé, G., Akissoé, N.H., Jacobs, A., Dlamini, N., ... Hounhouigan, D.J. (2012). Production, consumption, and quality attributes of Lanhouin, a fish-based condiment from West Africa. *Food Chain*, 2(1), 117-130.
- 27 Kirovska, I., Velickova, N. (2021). The Importance of Qualitative and Quantitative Biological Methods for Evaluation and Screening of Mycotoxins. *Albanian Journal of Medical and Health Sciences*, 55(February), 1-6.
- 29 Komnenov, D., Levanovich, P.E., Rossi, N.F. (2019). Hypertension Associated with Fructose and High Salt: Renal and Sympathetic Mechanisms. *Nutrients*, 11(3), 569.
- 18 Komprda, T., Smělá, D., Novická, K.A., Kalhotka, L., Šustová, K., Pechová, P. (2007). Content and Distribution of Biogenic Amines in Dutch-Type Hard Cheese. *Food Chemistry*, 102(1), 129-37.
- Kotsanopoulos KV, Arvanitoyannis IS. (2017). The Role of Auditing, Food Safety, and Food Quality Standards in the Food Industry: A Review. *Comprehensive Reviews in Food Science and Food Safety*, 16(5), 760-75.
- Kung, H.F., Lee, Y.C., Huang, Y.L., Huang, Y.R., Su, Y.C., Tsai, Y.H. (2017). Degradation of Histamine by Lactobacillus Plantarum Isolated from Miso Products. *Journal of Food Protection*, 80 (10), 1682-88.
- 12 Lee, G.I., Lee, H.M., Lee, C.H. (2012). Food Safety Issues in Industrialization of Traditional Korean Foods. *Food Control*, 24(1), 1-5.
- Lee, J.H., Jin, Y.H., Park, Y.K., Yun, S.J., Mah, J.H. (2019). Formation of Biogenic Amines in Pa (Green Onion) Kimchi and Gat (Mustard Leaf) Kimchi. *Foods*, 8(3), 109.
- Lee, Y.C., Kung HF, Huang YL, Wu CH, Huang YR, Tsai YH. 2016. Reduction of Biogenic Amines during Miso Fermentation by Lactobacillus Plantarum as a Starter Culture. *Journal of Food Protection*, 79(9), 1556-61.
- Lin, X., Tang, Y., Hu, Y., Lu, Y., Sun, Q., Lv, Y., Zhang, Q., Wu, C., Zhu, M., He, Q. and Chi, Y., (2021). Sodium reduction in traditional fermented foods: Challenges, strategies, and perspectives. *Journal of Agricultural and Food Chemistry*, 69(29), 8075-8080.
- 74 Liu, K. (2008). 14 - Food Use of Whole Soybeans. In *Soybeans*, edited by Lawrence A. Johnson, Pamela J. White, and Richard Galloway, 441-81. AOCSS Press.
- 91 Liu, K. (2012). *Soybeans: chemistry, technology, and utilization*. Springer.
- Liu, L., Chen, X., Hao, L., Zhang, G., Jin, Z., Li, C., Yang, Y., Rao, J., Chen, B. (2020). Traditional Fermented Soybean Products: Processing, Flavor Formation, Nutritional and Biological Activities. *Critical Reviews in Food Science and Nutrition*, 0 (0), 1-19.
- 46 Ma, Y., He, F.J., MacGregor, G.A. (2015). High salt intake: independent risk factor for obesity? *Hypertension*, 66(4), 843-9.
- 31 Mancía, G., Fagard, R., Narkiewicz, K., Redon, J., Zanchetti, A., Böhm, M., Christiaens, T., Kova, R., De Backer, G., Dominiczak, A., Galderisi, M. (2013). 2013 ESH/ESC Guidelines for the management of arterial hypertension. *Arterial Hypertension*, 17(2), 90-168.
- Mendes, R., Silva, H.A., Nunes, M.L., Empis, J.M. (2005). Effect of Low-Dose Irradiation and Refrigeration on the Microflora, Sensory Characteristics and Biogenic Amines of Atlantic Horse Mackerel (*Trachurus Trachurus*). *European Food Research and Technology*, 221(3), 329-35.
- 57 Mohan, S., Campbell, N.R. (2009). Salt and high blood pressure. *Clinical Science*, 117(1), 1-11.
- 15 Mullin, W.J., Xu, W. (2001). Study of soybean seed coat components and their relationship to water absorption. *Journal of Agricultural and Food Chemistry*, 49(11), 5331-5.
- 25 Nazhand, A., Durazzo, A., Lucarini, M., Souto, E.B., Santini, A. (2020). Characteristics, Occurrence, Detection and Detoxification of Aflatoxins in Foods and Feeds. *Foods*, 9(5), 644.
- Novella-Rodríguez, S., Veciana-Nogués, M.T., Saldo, J., Vidal-Carou, M.C. (2002). Effects of high hydrostatic pressure treatments on biogenic amine contents in goat cheeses during ripening. *Journal of agricultural and food chemistry*, 50(25), 7288-92.
- Novita, N.R., Abidin, Z. (2020). Supporting Factors of Tempeh Products Quality in Sukawening Village, Dramaga District, Bogor Regency. *Jurnal Pusat Inovasi Masyarakat*, (PIM) 2(6), 925-930-925-930.
- Oh, H., Ryu, M., Heo, J., Jeon, S., Kim, Y.S., Jeong, D., Uhm, T.B. (2014). Characterization of Biogenic Amine-reducing *Pediococcus pentosaceus* Isolated from Traditionally Fermented Soybean Products. *Korean Journal of Microbiology*, 50(4), 319-26.

- Omotayo, O.P., Omotayo, A.O., Mwanza, M., Babalola, O.O. (2019). Prevalence of Mycotoxins and Their Consequences on Human Health. *Toxicological Research*, 35(1), 1–7.
- Ouoba, L.I.I., Diawara, B., Annan, N.T., Poll, L., Jakobson, M. (2005). Volatile compounds of 'soubmbala', a fermented African locust bean, *Parkia biglobosa*, food condiment. *Journal of Applied Microbiology*, 99,1413-1421.
- 14 Pachlová, V., Buňka, F., Flasarová, R., Válková, P., Buňková, L. (2012). The Effect of Elevated Temperature on Ripening of Dutch Type Cheese. *Food Chemistry*, 132(4), 1846–54.
- Park, H.S., Cho, H.Y., Shin, J.K. (2015). A study of sodium reduction effect in foods using fermented soy sauce. *Korean Journal of Food Science and Technology*, 47(4), 468–473.
- Park, Y.K., Lee, J.H., Mah, J.H. (2019). Occurrence and Reduction of Biogenic Amines in Traditional Asian Fermented Soybean Foods: A Review. *Food Chemistry*, 278 (April), 1–9.
- Peleteiro, B., Lopes, C., Figueiredo, C., Lunet, N. (2011). Salt intake and gastric cancer risk according to *Helicobacter pylori* infection, smoking, tumour site and histological type. *British journal of cancer*, 104(1), 198-207.
- Qin, H., Yang, H., Qiao, Z., Gao, S., Liu, Z. (2013). Identification and characterization of a *Bacillus subtilis* strain HB-1 isolated from Yandou, a fermented soybean food in China. *Food Control*, 31(1), 22-7.
- Qiu, S., Wang, Y., Cheng, Y., Liu, Y., Yadav, M.P., Yin, L. (2018). Reduction of Biogenic Amines in Sufu by Ethanol Addition during Ripening Stage. *Food Chemistry*, 239 (January), 1244–52.
- Rabie, M., Simin-Sarkadi, L., Siliha, H., El-seedy, S., El Badawy, A-A. (2009). Changes in free amino acids and biogenic amines of Egyptian salted-fermented fish (Feseekh) during ripening and storage. *Food Chemistry*, 115, 635-638.
- Reyes, E., Diezhandino, I., Fernandez, D., Ferrazza, R.E., Tornadijo, M.E., Fresno, J.M. (2014). Effect of Autochthonous Starter Cultures on the Biogenic Amine Content of Ewe's Milk Cheese throughout Ripening. *Food Microbiology*, 44 (December), 271–77.
- Restuccia, D., Spizzirri, U.G., Puoci, F., Picci, N. (2015). Determination of Biogenic Amine Profiles in Conventional and Organic Cocoa-Based Products. *Food Additives & Contaminants: Part A*, 32(7), 1156–63.
- Rohm, B., Scherlach, K., Möbius, N., Partida-Martinez, L.P., Hertweck, C. (2010). Toxin Production by Bacterial Endosymbionts of a Rhizopus Microsporous Strain Used for Tempe/Sufu Processing. *International Journal of Food Microbiology*, 136(3), 368–71.
- Roy, K.W., Baird, R.E., Abney, T.S. (2001). A review of soybean (*Glycine max*) seed, pod, and flower mycofloras in North America, with methods and a key for identification of selected fungi. *Mycopathologia*, 150(1), 15-27.
- Ruiz-Capillas, C., Herrero, A.M. (2019). Impact of Biogenic Amines on Food Quality and Safety. *Foods*, 8(2), 62.
- Sanni, A.I., Onilude, A., Fadahunsi, I., Ogunbanwo, S., Afolabi, R. (2002). Selection of starter cultures for the production of ugba, a fermented soup condiment. *European Journal of Food Research and Technology*, 215:176-180.
- 32 Samtiya, M., Aluko, R.E., Dhewa, T. (2020). Plant Food Anti-Nutritional Factors and Their Reduction Strategies: An Overview. *Food Production, Processing and Nutrition*, 2(1), 6.
- Santos, M.S. (1996). Biogenic Amines: Their Importance in Foods. *International Journal of Food Microbiology*, 29(2–3), 213–31.
- 16 Seo, S.H., Cho, S.J. (2016). Changes in Allergenic and Antinutritional Protein Profiles of Soybean Meal during Solid-State Fermentation with *Bacillus Subtilis*. *LWT* 70 (July), 208–12.
- Shim, J.M., Lee, K.W., Yao, Z., Kim, H.J., Kim, J.H. (2016). Properties of Doenjang (Soybean Paste) Prepared with Different Types of Salts. *Journal of Microbiology and Bio* 97(9), 1533–41.
- Shin, D.H., Kwon, D.Y., Kim, Y.S., Jeong, D.Y. (2012). Science and Technology of Korean Gochujang. Seoul: Public Health Edu
- Shin, D.S., Park, C.I., Choi, I.D., Lee, S.K., Park, J.Y., Kim, N.G., Choi, H.S. (2019). Quality Properties of Soy-paste Soybean Cultivar for Fermented Soybean Products. *The Korean J. of Food and Nutrition*, 32(2), 114–21.
- Singh, B., Karan, R., Singh, V. (2014a). Microbial quality and safety of Axone- Akhuni, a fermented soybean food of Nagaland. *Notore Med*, 2014,13
- 4 Singh, T.A., Devi, K.R., Ahmed, G., Jeyaram, K. (2014b). Microbial and endogenous origin of fibrinolytic activity in traditional fermented foods of Northeast India. *International Food Research Journal*, 55:356–362.
- 22 Shukla, S., Park, H.K., Kim, J.K., Kim, M. (2010). Determination of Biogenic Amines in Korean Traditional Fermented Soybean Paste (Doenjang). *Food and Chemical Toxicology*, 48(5), 1191–95.
- Shukla, S., Park, J., Park, J.H., Kim, M.K., Park, S., Dubey, A., Jeon, J., Khan, Y., Kim, M. (2017). Evaluation of Fungal Microflora for Aflatoxin Producing Possibility in Novel Quality Meju Fermented with Single and/or Multiple Additions of *Nelumbo Nucifera*, *Ginkgo Biloba*, and *Allium Sativum* Extracts. *Journal of Food Safety*, 37(4), e12368.
- 39 Sivamaruthi, B.S., Kesika, P., Chaiyasut, C. (2019). Toxins in Fermented Foods: Prevalence and Preventions - A Mini Review. *Toxins*, 11(1), 4.
- 45 Stadnik, J. J., Dolatowski, Z. (2010). Biogenic Amines in Meat and Fermented Meat Products. *Acta Scientiarum Polonorum Technologia*, 59(entaria), 9(3).
- Sugawara, E. (2010). Fermented soybean pastes miso and shoyu with reference to aroma, in *Fermented Foods and Beverages of the World*, eds J. P. Tamang and K. Kailasanthi, (New York, NY: CRC Press, Taylor and Francis Group), 25–245.
- Sugiyama, M., Ae, N., Hajika, M. (2011). Developing of a simple method for screening soybean seedling cadmium accumulation to select soybean genotypes with low seed cadmium. *Plant and Soil*, 341, 413-422.
- 23 Tamang, J.P., Shin, D.H., Jung, S.J., Chae, S.W. (2016). Functional properties of microorganisms in fermented foods. *Frontiers in Microbiology*, 7, 578.
- Tamang, J.P., Cotter, P.D., Endo, A., Han, N.S., Kort, R., Liu, S.Q., Mayo, B., Westerik, N., Hutkins, R. (2020). Fermented Foods in a Global Age: East Meets West. *Comprehensive Reviews in Food Science and Food Safety*, 19(1), 184–217.
- 43 Ten Brink, B., Damink, C., Joosten, H.M., In't Veld, J.H. (1990). Occurrence and formation of biologically active amines in foods. *International journal of food microbiology*, 11(1), 73-84.
- 56 Thakur, A., Sharma, V., Thakur, A. (2019). An Overview of Anti-Nutritional Factors in Food. *International Journal of Chemical Studies*, 7(1), 2472-2479.
- Wang, L.J., Li, D., Zou, L., Dong Chen, X., Cheng, Y.Q., Yamaki, K., Li, L.T. (2007). Antioxidative Activity of Douchi (A Chinese Traditional Salt-Fermented Soybean Food) Extracts During Its Processing. *International Journal of Food Properties*, 10(2), 385–96.
- 20 Wang, L.J., Yin, L.J., Li, D., Zou, L., Saito, M., Tatsumi, E. (2007). Influences of Processing and NaCl Supplementation on Isoflavone Contents and Composition during Douchi Manufacturing. *Food Chemistry*, 101(3), 1247–53.
- Whelton, P.K., Carey, R.M., Aronow, W.S., Casey, D.E., Collins, K.J., Dennison Himmelfarb, C., DePalma, S.M., Gidding, S., Jamerson, K.A., Jones, D.W., MacLaughlin, E.J. (2018). 2017 ACC/AHA/AAPA/ABC/ACPM/AGS/AphA/ASH/ASPC/NM/A/PCNA guideline for the prevention, detection, 65 nition, and management of high blood pressure in adults: a report of the American College of Cardiology/American Heart Association Task Force on Clinical Practice Guidelines. *Journal of the American College of Cardiology*, 71(19), e127-e248.
- Winarno, F.G., Fardiaz, S., Daulay, D. (1973). Indonesian fermented foods. Indonesia: Department of Agricultural Product Technology, Bogor Agricultural University.
- 28 Worldwide Regulations for Mycotoxins in Food and Feed in (2003). N.d. Accessed July 69 5, 2021. <http://www.fao.org/3/y5499e/y5499e07.htm>.
- Wu, F. (2004). Mycotoxin risk assessment for the purpose of setting international regulatory standards, 4049-4055.
- 21 Xiang, H., Sun-Waterhouse, D., Waterhouse, G.L., Cui, C., Ruan, Z. (2019). Fermentation-Enabled Wellness Foods: A Fresh Perspective. *Food Science and Human Wellness*, 8(3), 203–43.
- Yang, H., Yang, L., Zhang, J., Li, H., Tu, Z., Wang, X. (2019a). Exploring functional core bacteria in fermentation of a traditional Chinese food, Aspergillus-type douchi. *PLoS One*, 14(12), e0226965.

- Yang, J., Wu, X.B., Chen, H.L., Sun-Waterhouse, D., Zhong, H.B., Cui, C. (2019b). A value-added approach to improve the nutritional quality of soybean meal by product: enhancing its antioxidant activity through fermentation by *Bacillus amyloliquefaciens* SWJS22. *Food Chemistry*, 272, 396–403.
- 48 Zain, M.E. (2011) Impact of Mycotoxins on Humans and Animals. *Journal of Saudi Chemical Society*, 15(2), 129–44.
- Zhang, B., Chen, P., Florez-Palacios, S.L., Shi, A., Hou, A., Ishibashi, T. (2010). Seed quality attributes of food-grade soybeans from the US and Asia. *Euphytica*, 173(3), 387–96.
- Zhang, Q., Lin, S., Nie, X. (2013). Reduction of Biogenic Amine Accumulation in Silver Carp Sausage by an Amine-Negative *Lactobacillus Plantarum*. *Food Control*, 32(2), 496–500.
- Zhang, Y.T., Yu, B., Lu, Y.H., Wang, J., Liang, J.B., Tufarelli, V., Laudadio, V., Liao, X.D. (2017). Optimization of the Fermentation Conditions to Reduce Anti-Nutritive Factors in Soybean Meal. *Journal of Food Processing and Preservation*, 41(5), e13114.
- 2 Zhao, H., Wang, Y., Zou, Y., Zhao, M. (2013). Natural Occurrence of Deoxynivalenol in Soy Sauces Consumed in China. *Food Control*, 29(1), 71–75.
- Zheng, L., Li, D., Li, Z.L., Kang, L.N., Jiang, Y.Y., Liu, X.Y., Chi, Y.P., Li, Y.Q., Wang, J.H. (2017). Effects of *Bacillus* Fermentation on the Protein Microstructure and Anti-Nutritional Factors of Soybean Meal. *Letters in Applied Microbiology*, 65(6), 520–26.
- 1 Zhi, Y., He, K., Sun, T., Zhu, Y., Zhou, Q. (2015). Assessment of Potential Soybean Cadmium Excluder Cultivars at Different Concentrations of Cd in Soils. *Journal of Environmental Sciences*, 35(September), 108–14.
- 54 Zhi, Y., Sun, T., Zhou, Q., Leng, X. (2020). Screening of Safe Soybean Cultivars for Cadmium Contaminated Fields. *Scientific Reports*, 10(1), 12965.
- Zhu, Y.P., Cheng, Y.Q., Wang, L.J., Fan, J.F., Li L.T. (2008). Enhanced antioxidative activity of Chinese traditionally fermented okara (meitauza) prepared with various microorganism. *International Journal of Food Properties*, 11(3), 519-29.

Potential improvement in the safety and quality of traditional fermented soybean products: A narrative review

ORIGINALITY REPORT

21 %
SIMILARITY INDEX

13 %
INTERNET SOURCES

13 %
PUBLICATIONS

10 %
STUDENT PAPERS

PRIMARY SOURCES

1 env.nankai.edu.cn <1 %
Internet Source

2 repository.ipb.ac.id <1 %
Internet Source

3 www.microbialfacts.com <1 %
Internet Source

4 Submitted to International Islamic University
Malaysia <1 %
Student Paper

5 Submitted to Truckee Meadows Community
College <1 %
Student Paper

6 chimie-biologie.ubm.ro <1 %
Internet Source

7 Kung, H.F.. "Histamine contents and
histamine-forming bacteria in sufu products in
Taiwan", Food Control, 200705 <1 %
Publication

8	P. Hajeb, S. Jinap. "Umami Taste Components and Their Sources in Asian Foods", Critical Reviews in Food Science and Nutrition, 2014 Publication	<1 %
9	Submitted to University of Wolverhampton Student Paper	<1 %
10	infogalactic.com Internet Source	<1 %
11	researcherslinks.com Internet Source	<1 %
12	Submitted to University of Warwick Student Paper	<1 %
13	journal.umk.edu.my Internet Source	<1 %
14	repository.i3l.ac.id Internet Source	<1 %
15	yujs.yu.ac.ir Internet Source	<1 %
16	Cheng Wang, Siyu Wei, Bocheng Xu, Lihong Hao, Weifa Su, Mingliang Jin, Yizhen Wang. " and co - fermented feed regulates lactating sow's performance, immune status and gut microbiota ", Microbial Biotechnology, 2020 Publication	<1 %

- | | | |
|----|--|------|
| 17 | Jennifer B Keogh, Kylie Lange, Rebecca Hogarth, Peter M Clifton. "Foods contributing to sodium intake and urinary sodium excretion in a group of Australian women", <i>Public Health Nutrition</i> , 2012
Publication | <1 % |
| 18 | Juraj Čuboň, Simona Kunová, Miroslava Kačániová, Peter Haščík et al. "Quality evaluation of Korbačik cheese", <i>Potravinarstvo Slovak Journal of Food Sciences</i> , 2015
Publication | <1 % |
| 19 | Submitted to Wright State University
Student Paper | <1 % |
| 20 | Xu, Lu, Bin Du, and Baojun Xu. "A systematic, comparative study on the beneficial health components and antioxidant activities of commercially fermented soy products marketed in China", <i>Food Chemistry</i> , 2015.
Publication | <1 % |
| 21 | www.houseofhealth.co.nz
Internet Source | <1 % |
| 22 | Submitted to King Mongkut's Institute of Technology Ladkrabang
Student Paper | <1 % |
| 23 | academico.ualg.pt
Internet Source | <1 % |

24	cdn.ymaws.com Internet Source	<1 %
25	ejbpc.springeropen.com Internet Source	<1 %
26	elib.mui.ac.ir Internet Source	<1 %
27	eprints.ugd.edu.mk Internet Source	<1 %
28	Submitted to Hong Kong Baptist University Student Paper	<1 %
29	Submitted to Mansoura University Student Paper	<1 %
30	Submitted to Pwani University Student Paper	<1 %
31	Submitted to University of Cumbria Student Paper	<1 %
32	Submitted to University of New England Student Paper	<1 %
33	incda-fundulea.ro Internet Source	<1 %
34	www.spkx.net.cn Internet Source	<1 %
35	Submitted to Cranfield University Student Paper	<1 %

36

Se Young Cheon, Hye Won Wang, Hwa Jung Lee, Kyung Mi Hwang, Hae Seong Yoon, Yoon Jung Kang. "Relationship of sodium consumption with obesity in Korean adults based on Korea National Health and Nutrition Examination Survey 2010~2014", Journal of Nutrition and Health, 2017

Publication

<1 %

37

pure.port.ac.uk

Internet Source

<1 %

38

In-Seon Lee. "Effect of Different Types of Soy Sauce and Curcuma longa L. Extract on Quality Characteristics of Laver Jangajji", Korean Journal of Food and Cookery Science, 2018

Publication

<1 %

39

Submitted to North Harris Montgomery Community College District

Student Paper

<1 %

40

Runni Mukherjee, Runu Chakraborty, Abhishek Dutta. "Role of Fermentation in Improving Nutritional Quality of Soybean Meal — A Review", Asian-Australasian Journal of Animal Sciences, 2015

Publication

<1 %

41

Yi Wang, Xue Xiao, Tiequan Zhang, Houyang Kang, Jian Zeng, Xing Fan, Lina Sha, Haiqin

<1 %

Zhang, Kangfu Yu, Yonghong Zhou. " Cadmium Treatment Alters the Expression of Five Genes at the Locus in Two Soybean Cultivars [(L.) Merr] ", The Scientific World Journal, 2014

Publication

42

Angela Marcobal, Blanca De Las Rivas, Rosario Muñoz. "First genetic characterization of a bacterial β -phenylethylamine biosynthetic enzyme in *Enterococcus faecium* RM58", FEMS Microbiology Letters, 2006

<1 %

Publication

43

Submitted to Myongji University Graduate School

<1 %

Student Paper

44

Renyong Pan, Jianwu Lin, Jitong Cai, Licai Zhang, Jiaming Liu, Xingtian Wen, Xiaoyulong Chen, Xin Zhang. "A two-stage feature aggregation network for multi-category soybean leaf disease identification", Journal of King Saud University - Computer and Information Sciences, 2023

<1 %

Publication

45

Submitted to University of Adelaide

<1 %

Student Paper

46

citeseerx.ist.psu.edu

<1 %

Internet Source

- | | | |
|----|--|------|
| 47 | eurekamag.com
Internet Source | <1 % |
| 48 | Ali Ghaffarian - Bahraman, Salman Mohammadi, Ali Dini. " Occurrence and risk characterization of aflatoxin in milk samples from southeastern Iran using the margin of exposure approach ", Food Science & Nutrition, 2023
Publication | <1 % |
| 49 | T. Ajungla, Lydia Yeptho, Asangla Kichu, Gloria Nyenthang. "Chapter 17 Some Ethnic Fermented Foods and Beverages of Nagaland", Springer Science and Business Media LLC, 2020
Publication | <1 % |
| 50 | bccr.tums.ac.ir
Internet Source | <1 % |
| 51 | www.jove.com
Internet Source | <1 % |
| 52 | A. Bianchini, L.B. Bullerman. "MYCOTOXINS Classification", Elsevier BV, 2014
Publication | <1 % |
| 53 | journal.ipb.ac.id
Internet Source | <1 % |
| 54 | zone.biblio.laurentian.ca
Internet Source | <1 % |

55	fsqsolutions.blogspot.com Internet Source	<1 %
56	www.chemijournal.com Internet Source	<1 %
57	Submitted to Kingston University Student Paper	<1 %
58	Submitted to Napier University Student Paper	<1 %
59	Sugawara, Etsuko. "Fermented Soybean Pastes Miso and Shoyu with Reference to Aroma", Fermented Foods and Beverages of the World, 2010. Publication	<1 %
60	stikes-nhm.e-journal.id Internet Source	<1 %
61	udsspace.uds.edu.gh Internet Source	<1 %
62	www.easdl.org Internet Source	<1 %
63	Carlin, F.. "Spore-forming bacteria in commercial cooked, pasteurised and chilled vegetable purees", Food Microbiology, 200004 Publication	<1 %
64	JOHAR AMIN AHMED ABDULLAH, Mercedes Jiménez-Rosado, Antonio Guerrero, Alberto	<1 %

Romero. "Eco-friendly synthesis of ZnO-nanoparticles using Phoenix dactylifera L. polyphenols: physicochemical, microstructural and functional assessment", Research Square Platform LLC, 2022

Publication

65

Submitted to KYUNG HEE UNIVERSITY

Student Paper

<1 %

66

Submitted to Kettering College of Medical Arts

Student Paper

<1 %

67

researchspace.ukzn.ac.za

Internet Source

<1 %

68

www.deepdyve.com

Internet Source

<1 %

69

Submitted to CSU, Pomona

Student Paper

<1 %

70

Submitted to Universitas Wijaya Kusuma Surabaya

Student Paper

<1 %

71

bmcnephrol.biomedcentral.com

Internet Source

<1 %

72

www.ncbi.nlm.nih.gov

Internet Source

<1 %

73

Jo, C.. "Irradiation effect on bulgogi sauce for making commercial Korean traditional meat product, bulgogi", Radiation Physics and

<1 %

Chemistry, 200312

Publication

74

Submitted to Nanyang Technological University

Student Paper

<1 %

75

Submitted to The Robert Gordon University

Student Paper

<1 %

76

Victoria M. Taylor, Linda K. Ko, Joo Ha Hwang, Mo-Kyung Sin, John M. Inadomi. "Gastric Cancer in Asian American Populations: a Neglected Health Disparity", Asian Pacific Journal of Cancer Prevention, 2015

Publication

<1 %

77

Wellyzar Sjamsuridzal, Mangunatun Khasanah, Rela Febriani, Yura Vebliza, Ariyanti Oetari, Iman Santoso, Indrawati Gandjar. "The effect of the use of commercial tempeh starter on the diversity of Rhizopus tempeh in Indonesia", Scientific Reports, 2021

Publication

<1 %

78

bodyecology.com

Internet Source

<1 %

79

efsa.onlinelibrary.wiley.com

Internet Source

<1 %

80

W. J. de Koe. "Nutritional labeling legislation", Accreditation and Quality Assurance, 1997

Publication

<1 %

81

arccarticles.s3.amazonaws.com

Internet Source

<1 %

82

www.grafiati.com

Internet Source

<1 %

83

Sheida Ehsannia, Mohammad Reza Sanjabi.
"Physicochemical, microbiological and
spoilage analysis of probiotic processed
cheese analogues with reduced emulsifying
salts during refrigerated storage", Journal of
Food Science and Technology, 2016

Publication

<1 %

84

cansa.org.za

Internet Source

<1 %

85

d.lib.msu.edu

Internet Source

<1 %

86

documentserver.uhasselt.be

Internet Source

<1 %

87

europepmc.org

Internet Source

<1 %

88

journal.uwks.ac.id

Internet Source

<1 %

89

"Food Safety", Springer Science and Business
Media LLC, 2007

Publication

<1 %

90 V. Venugopal, S. N. Doke, Paul Thomas. "Radiation Processing to Improve the Quality of Fishery Products", *Critical Reviews in Food Science and Nutrition*, 1999
Publication <1 %

91 aquasiana.org
Internet Source <1 %

92 dstsikkim.gov.in
Internet Source <1 %

93 Bai, Xuezhi, Il Beom Park, Han-Joon Hwang, and Jae-Hyung Mah. "The ability of Schisandra chinensis fruit to inhibit the growth of foodborne pathogenic bacteria and the viability and heat resistance of Bacillus cereus spores", *International Journal of Food Science & Technology*, 2015.
Publication <1 %

94 Fitra Yosi, Barbara U. Metzler-Zebeli. "Dietary Probiotics Modulate Gut Barrier and Immune-Related Gene Expression and Histomorphology in Broiler Chickens under Non- and Pathogen-Challenged Conditions: A Meta-Analysis", *Animals*, 2023
Publication <1 %

95 Hengyou Zhang, Yuming Yang, Chongyuan Sun, Xiaoqian Liu, Lingling Lv, Zhenbin Hu, Deyue Yu, Dan Zhang. " Up - regulating <1 %

improves phosphorus uptake and use efficiency by promoting root growth in soybean ", Plant, Cell & Environment, 2020

Publication

96

Radka Burdychova, Tomas Komprda. "Biogenic amine-forming microbial communities in cheese", FEMS Microbiology Letters, 2007

Publication

<1 %

97

Tsuyoshi Kameda, Hideyuki Aoki, Noriyuki Yanaka, Thanutchaporn Kumrungsee, Norihisa Kato. "Production of Isoflavone Aglycone-enriched Tempeh with *Rhizopus stolonifer*", Food Science and Technology Research, 2018

Publication

<1 %

98

attractivejournal.com

Internet Source

<1 %

99

docplayer.net

Internet Source

<1 %

100

repositorio.uchile.cl

Internet Source

<1 %

101

www.osapublishing.org

Internet Source

<1 %

102

KeShun Liu. "Food Use of Whole Soybeans", Elsevier BV, 2008

Publication

<1 %

- 103 Mori, S.. "Xylem loading process is a critical factor in determining Cd accumulation in the shoots of *Solanum melongena* and *Solanum torvum*", *Environmental and Experimental Botany*, 200911
Publication <1 %
-
- 104 Sang-Hyun Seo, Seong-Jun Cho. "Changes in allergenic and antinutritional protein profiles of soybean meal during solid-state fermentation with *Bacillus subtilis*", *LWT - Food Science and Technology*, 2016
Publication <1 %
-
- 105 Ggot-Im Lee, Hyo-Min Lee, Cherl-Ho Lee. "Food safety issues in industrialization of traditional Korean foods", *Food Control*, 2012
Publication <1 %
-
- 106 Kati Väkeväinen, Anita Valderrama, Judith Espinosa, Dora Centurión et al. "Characterization of lactic acid bacteria recovered from atole agrio , a traditional Mexican fermented beverage", *LWT - Food Science and Technology*, 2018
Publication <1 %
-
- 107 Wongputtisin, P., C. Khanongnuch, W. Khongbantad, P. Niamsup, and S. Lumyong. "Screening and selection of *Bacillus* spp. for fermented corticate soybean meal <1 %

production", Journal of Applied Microbiology, 2012.

Publication

Exclude quotes Off

Exclude matches Off

Exclude bibliography Off