

Detection of *invA* virulence gene of multidrug-resistant *Salmonella* species isolated from the cloacal swab of broiler chickens in Blitar district, East Java, Indonesia

by Freshinta Jellia Wibisono

Submission date: 29-Mar-2023 07:06PM (UTC+0700)

Submission ID: 2049907944

File name: vA_virulence_gene_of_multidrug-resistant_Salmonella_species.pdf (1.17M)

Word count: 4596

Character count: 25416

Detection of *invA* virulence gene of multidrug-resistant *Salmonella* species isolated from the cloacal swab of broiler chickens in Blitar district, East Java, Indonesia

Freshindy Marissa Wibisono¹, Hayyun Durrotul Faridah², Freshinta Jellia Wibisono³, Wiwiek Tyasningsih⁴, Mustofa Helmi Effendi⁵, Adiana Mutamsari Witaningrum⁶ and Emmanuel Nnabuike Ugbo⁶

21

1. Department of Veterinary Public Health, Faculty of Veterinary Medicine, Universitas Airlangga, Surabaya, Indonesia; 2. Department of Biology, Faculty of Science and Technology, Universitas Airlangga, Surabaya, Indonesia; 3. Department of Veterinary Public Health, Faculty of Veterinary Medicine, Wijaya Kusuma University Surabaya, Surabaya, Indonesia; 4. Department of Veterinary Microbiology, Faculty of Veterinary Medicine, Universitas Airlangga, Surabaya, Indonesia; 5. Department of Veterinary Public Health, Faculty of Veterinary Medicine, Universitas Airlangga, Surabaya, Indonesia; 6. Department of Applied Microbiology, Ebonyi State University, Abakaliki, Nigeria.

Corresponding author: Mustofa Helmi Effendi, e-mail: mheffendi@yahoo.com

Co-authors: FMW: freshindymw@gmail.com, HDF: hayyun.durrotul.faridah-2019@fst.unair.ac.id, FJW: freshinta.uwks@gmail.com, WT: witya_kh@yahoo.com, AMW: adiana_mutam@yahoo.co.id, ENU: ugbonuel2001@yahoo.com

Received: 23-06-2021, **Accepted:** 02-11-2021, **Published online:** 19-12-2021

doi: www.doi.org/10.14202/vetworld.2021.3126-3131 **How to cite this article:** Wibisono FM, Faridah HD, Wibisono FJ, Tyasningsih W, Effendi MH, Witaningrum AM, Ugbo EN (2021) Detection of *invA* virulence gene of multidrug-resistant *Salmonella* species isolated from the cloacal swab of broiler chickens in Blitar district, East Java, Indonesia, *Veterinary World*, 14(12): 3126-3131.

Abstract

Background and Aim: The increasing number of multidrug-resistant (MDR) *Salmonella* species on poultry farms in Indonesia has caused concern regarding human health. This study was conducted to determine the presence of the virulence gene *invA* in MDR *Salmonella* species isolated from the cloacal swab of broiler chickens in Blitar district, East Java Province, Indonesia.

Materials and Methods: Cloacal swab samples were collected by purposive sampling from 15 farms in four districts. Isolation and identification of bacteria were performed using standard microbiological techniques. Confirmation of MDR isolates was done using five different classes of antibiotics, including the beta-lactam, aminoglycoside, fluoroquinolone, phenicol, and monobactam groups. An antibiotic susceptibility test was conducted using the Kirby-Bauer disk diffusion method, and a polymerase chain reaction method was used to screen for the presence of *invA*.

Results: It was observed that 32.26% (50/155) of the samples were positive for *Salmonella* species. Of these 50 *Salmonella* isolates, 7 (14%) were identified as MDR strains. An important finding was the detection of *invA* in all the seven MDR *Salmonella* strains (100%) isolated from the cloacal swab of broiler chickens in Blitar district, East Java Province.

Conclusion: Veterinarians have an extremely important role in monitoring the use of antibiotics in farm animals to mitigate the rapid spread of MDR organisms in our environment, which can otherwise cause serious economic losses and also public health issues.

Keywords: broiler chicken, *invA* gene, multidrug-resistant, public health, *Salmonella*.

Introduction

Salmonella species have been the major cause of foodborne diseases in several countries in the past 100 years [1-30]. It has been reported worldwide that there are 1.6 million cases of typhoid fever, 1.3 billion cases of gastroenteritis, and 3 million deaths due to *Salmonella* species [4]. Salmonellosis is a disease caused by the pathogenic agent *Salmonella* spp. Salmonellosis has been categorized as an important public health zoonosis [5-7] with a high morbidity rate and is difficult to prevent [8,9]. *Salmonella* species

have several virulence factors that are important in the process of infection in the host and spread of disease. Most virulence factors are located in chromosomal genes known as *Salmonella* pathogenicity islands (SPIs). SPIs are essential for invasion and proliferation in host cells [10,11].

Chromosomal virulence genes comprise *invA*, *invE*, *himA*, and *phoP*, which are included among the target genes for polymerase chain reaction (PCR) amplification in *Salmonella* spp. [12,13]. *Salmonella* spp. harbor *invA* that plays a role in causing illness. More than 50% of these serotypes are *Salmonella enterica*, which accounts for the majority of human *Salmonella* infections [3]. This gene is located in the area of SPI, which has an operon that functions as a repository for genetic information [14]. *invA* from *Salmonella* spp. contains a unique DNA sequence and has been confirmed to be a suitable PCR target gene for the detection of *Salmonella* spp. [15]. This gene encodes proteins in

Copyright: Wibisono, et al. Open Access. This article is distributed under the terms of the Creative Commons Attribution 4.0 International License (<http://creativecommons.org/licenses/by/4.0/>), which permits unrestricted use, distribution, and reproduction in any medium, provided you give appropriate credit to the original author(s) and the source, provide a link to the Creative Commons license, and indicate if changes were made. The Creative Commons Public Domain Dedication waiver (<http://creativecommons.org/publicdomain/zero/1.0/>) applies to the data made available in this article, unless otherwise stated.

bacterial cell membranes that are required for invasion into host epithelial cells [16]. *In vitro* amplification of DNA by the PCR method is an accurate tool for microbiological diagnosis [17].

Blitar has the largest chicken farms in East Java province, which consists of layer and broiler farms [18]. This high population enables the development of several diseases. The incidence of infection with *Salmonella* species is caused by contact with animals [9,19]. Infection can be acquired by both direct and indirect contact with animals [20]. Due to the increasing incidence of infectious diseases, antibiotic use has become the most predominant strategy in health services [21,22]. Such high use of antibiotics has resulted in an increase in antibiotic resistance [23].

This study was conducted to determine the presence of the virulence gene *invA* in multidrug-resistant (MDR) *Salmonella* species isolated from the cloacal swab of broiler chickens in Blitar district, East Java Province, Indonesia.

Materials and Methods

Ethical approval

Ethical approval was not necessary. However, cloacal swab samples were collected as per the standard collections method without any harm to the broiler.

Study period and location

This research was conducted from October 2020 to February 2021. Samples were collected from 15 broiler farms in Blitar district. The farms are located in four sub-districts, namely Ponggok, Garum, Selopuro, and Selorejo sub-districts. Samples were processed at Laboratory of Department of Veterinary Public Health, Faculty of Veterinary Medicine, Universitas Airlangga.

Sample collection

The sampling technique was carried out by purposive sampling from broiler farms that had been determined by the researchers with criteria, namely, information from the relevant agencies, and broiler chickens that had clinical digestive symptoms such as diarrhea, abnormal stool color, weakness, and dirty parts around the cloaca. Samples were taken from the cloacal swab of broiler chickens in Blitar district [24]. The sample size used was 155 cloacal swab samples from 15 broiler farms on four sub-districts (Figure-1) [25].

Bacterial isolates

Bacterial testing included isolation and identification of *Salmonella* isolates. Bacterial isolation was conducted by collecting a suspension using an inoculation loop sterilized under a Bunsen burner flame.

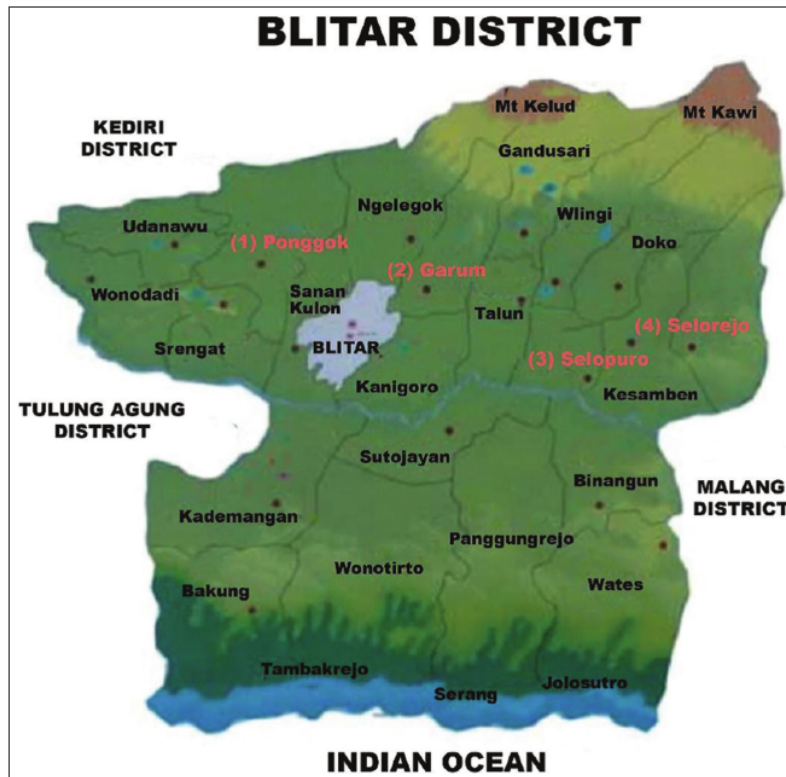


Figure-1: Map of the distribution of sampling in Blitar district. (1) Ponggok subdistrict; (2) Garum subdistrict; (3) Selopuro subdistrict; and (4) Selorejo subdistrict [25].

The suspension was implanted in Salmonella–Shigella agar (Figure-2). *Salmonella* growth produces a transparent or colorless colony with a black center due to the formation of H₂S gas. Presumptive *Salmonella* was placed on bismuth sulfite agar media. Bismuth sulfite is a selective medium for the isolation of *Salmonella* in the laboratory and is generally used for the detection of *Salmonella* species.

Antibiotic sensitivity test

All *Salmonella* spp. isolates were subjected to the antibiotic sensitivity test, and confirmation of MDR isolates was done using antibiotic sensitivity tests to five different classes of antibiotics. The following antibiotic disks (Oxoid, England) were used: Beta-lactam (amoxicillin 10 g), aminoglycoside (gentamicin 10 g), quinolone (ciprofloxacin 5 g), phenicol (chloramphenicol 30 g), and monobactam (aztreonam 30 g) groups.

PCR amplification of *invA*

All the MDR *Salmonella* spp. were tested for the presence of the virulence gene *invA* [26,27]. This gene is responsible for the virulence factor of

Salmonella spp. The specific primers used to detect *invA* in *Salmonella* isolates have been previously published [16], which included the forward primer 5' GTG AAA TTA TCG CCA CGT TCG GGC AA 3' and the reverse primer 5' TCA TCG CAC CGT CAA AGG AAC C 3' (284 bp). This study was conducted at the Veterinary Public Health Laboratory, Faculty of Veterinary Medicine, Universitas Airlangga, and the Microbiology Laboratory of the Central Health Laboratory, Surabaya. In the PCR analysis, *Escherichia coli* isolate ATCC 25922 was used as a negative control, and *Salmonella* Paratyphi A isolate ATCC 9150 was used as a positive control, which had been previously tested for the presence of *invA*.

Results and Discussion

Salmonella species remains one of the major causes of foodborne diseases such as salmonellosis and other related diarrhea in several countries in the world [3]. The findings of this study indicated that 32.26% (50/155) of the samples were positive for *Salmonella* isolates (Table-1). The highest incidence occurred in Garum subdistrict (60.00%), followed by Ponggok (28.30%) and Selopuro (27.45%) subdistricts, and the lowest incidence occurred in Selorejo subdistrict (23.08%). These results indicated the presence of high infection with *Salmonella* spp. in Blitar district. The overall incidence is much higher than that of the previous studies, which reported an incidence of 3.2% in layer chickens and 12.4% in broiler chickens from five provinces in Java [28]; however, the incidence of salmonellosis in layer chicken farms in Sidrap district was 76.39% [29]. Our study findings indicate the need for increased attention toward an immediate follow-up by relevant policymakers as an effort to prevent the spread of zoonotic diseases [30]. Salmonellosis is a zoonotic disease caused by *Salmonella* spp., which can affect humans and animals. Indirect transmission can occur through contact with the environment around animals or with contaminated objects around poultry farms [6,31].

The high incidence of salmonellosis in Garum subdistrict compared to that in the other three subdistricts is due to the relatively low sanitation in poultry farms. In general, the farm is located behind the farmer's house. Field conditions showed the sewerage from the farmer's house is adjacent to the cage. Contamination and infection with *Salmonella* spp. on a farm with poor

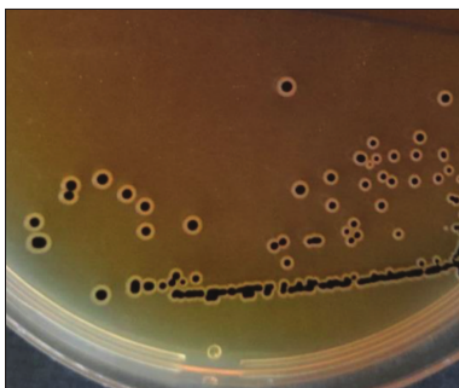


Figure-2: Pure colonies of *Salmonella* spp. on SSA media.

Table-1: Isolation and identification of *Salmonella* species on Blitar district.

Subdistrict	Samples	<i>Salmonella</i> spp.	Percentage
Ponggok	53	15	28.30
Garum	25	15	60.00
Selopuro	51	14	27.45
Selorejo	26	6	23.08
Total	155	50	32.26

Table-2: Multidrug resistance of *Salmonella* spp. on broiler chicken.

Location	<i>Salmonella</i> spp.	Beta-lactam		Aminoglycoside		Quinolone		Phenicol		Monobactam		Multidrug resistant	
		R	%	R	%	R	%	R	%	R	%	Total	%
Ponggok	15	5	33.3	4	26.7	3	20	2	13.3	0	0	0	0.00
Garum	15	5	33.3	2	13.3	6	40	2	13.3	0	0	3	20.00
Selopuro	14	8	57.1	4	28.6	11	78.6	0	0	0	0	3	21.43
Selorejo	6	4	66.7	2	33.3	3	50	2	33.3	0	0	1	16.67
Total	50	22	44	12	24	23	46	6	12	0	0	7	14

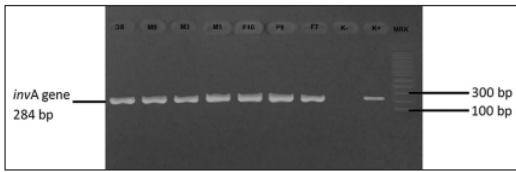


Figure-3: Gene *invA* of *Salmonella* spp. multidrug-resistant isolates. K+=*Salmonella* Paratyphi A ATCC 9150 as positive control; K-=*E. coli* ATCC 25922 as negative control; F7, F9, F10, M1, M3, M9, and O8=Multidrug-resistant isolates.

sanitation can occur due to the spread of *Salmonella* spp. through contaminated feces, thereby contaminating feed, drinking water, and hatching eggshells [28].

Salmonellosis can be treated using antibiotics. The emergence of MDR *Salmonella* species has now received the attention of various researchers. MDR indicates the resistance of bacteria to three or more classes of antibiotics [32]. Such resistance to some of these antibiotics can occur due to the pattern of continuous use of antibiotics in the livestock industry as both treatment and feed additives and growth promoters. The continuous use of antibiotics is a triggering factor for high levels of antibiotic resistance [33,34].

In this study, quinolone and beta-lactam exhibited the highest yields of 46% and 44%, respectively (Table-2). This is because these classes of antibiotics are often used in broiler farms in Blitar district. Fluoroquinolones have a very narrow safety range and are safe in low or high doses but for a short time. Continuous use for prolonged periods can cause side effects [35]. Beta-lactams are the most widely used class of antibiotics in both human clinical practice and veterinary medicine because they are broad-spectrum antibiotics and exhibit a very good level of safety [34]. Routine administration of broad-spectrum antibiotics is one of the supporting factors for the changing patterns of resistance to various antibiotics [36]. Cases of antibiotic resistance in bacteria can be caused by a lack of supervision on the use of antibiotics in farms, as 72.3% of farmers use antibiotics without veterinary supervision [37]. Risk factors such as the broiler breed, breeder education, type of partnership business, type of factory feed, veterinarian support in livestock rearing management, cage hygiene sanitation, chlorine treatment of drinking water, the existence of an antibiotic program, and reference to the use of antibiotics are positively associated with the incidence of MDR in chicken farms [38,39].

The findings of this study showed that seven *Salmonella* isolates were MDR (Table-2), as they were resistant to three different classes of antibiotics. MDR is caused by the continuous use of one type of antibiotic by the farmers. However, no single isolate was collectively resistant to the same antibiotic class. The existence of a rotation program in the administration of antibiotics can prevent the incidence of antibiotic resistance. Hence, it is necessary to educate

farmers on the use of different antibiotics or the rotation of antibiotics during disease treatment. The role of veterinarians is also extremely important in monitoring the use of antibiotics on farms. Antibiotics must be used wisely and in the correct dose, and not as a disease prevention strategy [38,40,31].

Our results also confirmed the presence of the virulence gene *invA* in all the seven (100%) MDR *Salmonella* isolates using *invA*-specific primers (Figure-3). In all these isolates, *invA* was successfully amplified at 284 bp. This finding indicated that it is difficult to treat salmonellosis caused by MDR isolates because they have the ability to be pathogenic as evidenced by the presence of *invA*. This gene encodes membrane proteins in bacteria that are responsible for invading host intestinal cells [42,43]. In *Salmonella* isolates, *invA* was located in SPI-1, which plays an extremely important role in the invasion of host epithelial cells. This gene is highly specific for most *Salmonella* species [44,45]. *Salmonella* spp. harbors numerous virulence factors, which is one of the causes for the high incidence of salmonellosis in humans and animals. Intensive use of antibiotics for salmonellosis treatment leads to the emergence of resistant bacteria. One of the best assays for identifying virulence genes is PCR [46,47].

Conclusion

In total, 32.26% (50/155) of the samples were positive for *Salmonella* species. Of the 50 isolates, 7 (14%) were found to be MDR. The virulence gene *invA* was identified in all the seven MDR *Salmonella* strains (100%) isolated from the cloacal swab of broiler chickens in Blitar district, East Java Province. Veterinarians have an extremely important role in monitoring the use of antibiotics in farm animals to mitigate the rapid spread of MDR organisms in our environment, which can otherwise cause serious economic losses and also public health issues.

Authors' Contributions

MHE, FMW, and FJW: Conceptualization. MHE, FMW, and HDF: Data curation. WT and AMW: Formal analysis. MHE and WT: Funding acquisition. FMW, HDF, and FJW: Investigation. MHE and AMW: Methodology. MHE and AMW: Project administration. MHE, FMW, and FJW: Resources. MHE and WT: Supervision. MHE, WT, and ENU: Validation. FMW and AMW: Visualization. MHE, FMW, and FJW: Writing original draft. MHE and ENU: Review and editing. All authors read and approved the final manuscript.

Acknowledgments

We would like to thank Blitar Animal Husbandry Office, Indonesia, for their help in the data collection used in this study. This study was funded by Universitas Airlangga, Indonesia (Grant number 420/UN3.15/PT/2021).

Competing Interests

The authors declare that they have no competing interests.

Publisher's Note

Veterinary World remains neutral with regard to jurisdictional claims in published map and institutional affiliation.

References

- Dos Sa A.M.P., Ferrari, R.G. and Conte-Junior, C.A. (2019) Factors in *Salmonella* Typhimurium: The sagacity a bacterium. *Curr. Microbiol.*, 76(6): 762-773.
- Lee, K.M., Runyon, M., Herrman, T.J., Phillips, R. and Hsieh, J. (2015) Review of *Salmonella* detection and identification methods: Aspects of rapid emergency response and food safety. *Food Control.*, 47(1): 264-276.
- Wibisono, F.M., Wibisono, F.J., Effendi, M.H., Plumeriastuti, H., Hidayatullah, A.R., Hartadi, E.B. and Sofiana, E.D. (2020) A review of salmonellosis on poultry farms: Public health importance. *Syst. Rev. Pharm.*, 11(9): 481-486.
- Pui, C.F., Wong, W.C., Chai, L.C., Tunung, R., Jeyaletchumi, P., Noor Hidayah, M.N., Ubong, A., Farinazleen, M.G., Cheah, Y.K. and Son, R. (2011) *Salmonella*: A foodborne pathogen. *Int. Food Res. J.*, 18(2): 465-473.
- Shinohara, N.K.S., Barros, V.B., Jimenez, S.M.C., Machado, E.C.L., Dutra, R.A.F. and Lima Filho, J.L. (2008) *Salmonella* spp., importante agente patogênico veiculado em alimentos. *Cien. Sa Colet.*, 13(5): 1675-1683.
- Abd El-Ghany, W.A. (2020) Salmonellosis: A foodborne zoonotic and public health disease in Egypt. *J. Infect. Dev. Res.*, 14(7): 674-678.
- Lobna, M.A.S., Ma A.I.A., Nashw, O.K. and Marwa, O.A.S. (2017) Zoonotic importance of salmonellosis in chickens and humans at Qalyobia province. *Egypt. J. Vet. Sci.*, 47(2): 151-164.
- Scallan, E., Hoekstra, R.M., Angulo, F.J., Tauxe, R.V., Widdowson, M.A., Roy, S.L., Jones, J.L. and Griffin, P.M. (2011) Foodborne illness acquired in the United States—Major pathogens. *Emerg. Infect. Dis.*, 17(1): 7-15.
- Anderson, T.C., Nguyen, T.A., Adams, J.K., Garrett, N.M., Bopp, C.A., Baker, J.B., McNeil, C., Torres, P., Ettestad, P.J., Erdman, M.M., Johnson, D.L., Gomez, T.M. and Behravesh, C.B. (2016) Multistate outbreak of human *Salmonella* Typhimurium infections linked to live poultry from agricultural feed stores and mail-order hatcheries, United States 2013. *One Health*, 2(12): 144-149.
- Hansen-Wester, I. and Hensel, M. (2001) *Salmonella* pathogenicity islands encoding type III secretion systems. *Microbes Infect.*, 3(7): 549-559.
- Lerminiaux, N.A., Mackenzie, K.D. and Cameron, A.D.S. (2020) *Salmonella* pathogenicity island 1 (SPI-1): The evolution and stabilization of a core genomic type three secretion system. *Microorganisms*, 8(4): 1-22.
- Jamshidi, A. (2009) Identification of *Salmonella* spp. and *Salmonella* Typhimurium by a multiplex PCR-based assay from poultry carcasses. *Int. J. Vet. Res.*, 3(1): 43-48.
- Lou, L., Zhang, P., Piao, R. and Wang, Y. (2019) *Salmonella* pathogenicity island 1 (SPI-1) and its complex regulatory network. *Front. Cell. Infect. Microbiol.*, 9(7): 1-12.
- Pham, O.H. and McSorley, S.J. (2015) Protective host immune responses to *Salmonella* infection. *Future Microbiol.*, 10(1): 101-110.
- Abdel-Aziz, N.M. (2016) Detection of *Salmonella* species in chicken carcasses using genus specific primer belong to invA gene in Sohag city, Egypt. *Vet. World.*, 9(10): 1125-1128.
- Yanestria, S.M., Rahmaniar, R.P., Wibisono, F.J. and Effendi, M.H. (2019) Detection of invA gene of *Salmonella* from milkfish (*Chanos chanos*) at Sidoarjo wet fish market, Indonesia, using polymerase chain reaction technique. *Vet. World.*, 12(1): 170-175.
- Malomy, B., Hoorfar, J., Bunge, C. and Helmuth, R. (2003) Multicenter validation of the analytical accuracy of *Salmonella* PCR: Towards an international standard. *Appl. Environ. Microbiol.*, 69(1): 290-296.
- Wibisono, F.J., Sumiarto, B., Untari, T., Effendi, M.H., Permatasari, D.A. and Witaningrum, A.M. (2020) Antimicrobial resistance on *Escherichia coli* from poultry production on Blitar, Indonesia. *Indian J. Forensic Med. Toxicol.*, 14(4): 4131-4136.
- Hale, C.R., Scallan, E., Cronquist, A.B., Dunn, J., Smith, K., Robinson, T., Lathrop, S., Tobin-D'Angelo, M. and Clogher, P. (2012) Estimates of enteric illness attributable to contact with animals and their environments in the United States. *Clin. Infect. Dis.*, 54(5): S472-S479.
- Behravesh, C.B., Brinson, D., Hopkins, B.A. and Gomez, T.M. (2014) Backyard poultry flocks and salmonellosis: A recurring, yet preventable public health challenge. *Clin. Infect. Dis.*, 58(10): 1432-1438.
- Wibisono, F.J., Sumiarto, B., Untari, T., Effendi, M.H., Permatasari, D.A. and Witaningrum, A.M. (2020) The presence of extended-spectrum beta-lactamase (ESBL) producing *Escherichia coli* on layer chicken farms in Blitar area, Indonesia. *Biodiversitas*, 21(6): 2667-2671.
- Effendi, M.H. and Khairullah, A.R. (2020) Extended-spectrum beta-lactamase (ESBL)-producing *Escherichia coli* from livestock. *Syst. Rev. Pharm.*, 11(7): 382-392.
- Harijani, N., Oetama, S.J.T., Soepranionondo, K., Effendi, M.H. and Tyasningsih, W. (2020) Biological hazard on multidrug resistance (MDR) of *Escherichia coli* collected from cloacal swab of broiler chicken on Wet Markets Surabaya. *Indian J. Forensic Med. Toxicol.*, 14(4): 3239-3244.
- Wibisono, F.J., Sumiarto, B., Untari, T., Effendi, M.H., Permatasari, D.A. and Witaningrum, A.M. (2020) CTX gene of extended-spectrum beta-lactamase (ESBL) producing *Escherichia coli* on broilers in Blitar, Indonesia. *Syst. Rev. Pharm.*, 11(7): 396-403.
- Pembkab Blitar. (2018) General Description of Blitar District. Available from: <http://www.blitarkab.go.id>. Retrieved on 14-01-2021.
- Effendi, M.H., Tyasningsih, W., Yurianti, Y.A., Rahmahani, J., Harijani, N. and Plumeriastuti, H. (2021) Presence of multidrug resistance (MDR) and extended-spectrum beta-lactamase (ESBL) of *Escherichia coli* isolated from cloacal swabs of broilers in several wet markets in Surabaya, Indonesia. *Biodiversitas*, 22(1): 304-310.
- Rahn, K., Gollis, S.A., Clarke, R.C., McEwen, S.A., Galan, J.E., Ginocchio, C., Curtiss, R. and Gyles, C.L. (1992) Amplification of an invA gene sequence of *Salmonella* Typhimurium by polymerase chain reaction (PCR) as a specific method for detection of *Salmonella*. *Mol. Cell. Probes*, 6(4): 271-279.
- Rahayuningtyas, I., Astuti, L.S., Istiyaningsih, I., Andesfha, E. and Atikah, N. (2018) Isolation and identification of *Salmonella* sp and *Escherichia coli* for mapping antimicrobial resistance in layer and broiler farms in 5 provinces in Java. In: *Penyidikan Penyakit Hewan Rapat Teknis dan Pertemuan Ilmiah (RATEKPII) dan Surveilans Kesehatan Hewan Tahun 2018*. p482-494.
- Thaha, A.H. (2016) Clinical description and prevalence of salmonellosis in layer chickens in Tanente village, Kec. Maritigae, Sidrap Regency. *Lab. Basic Anim. J. (Ilmu Peternak Fak. Sains Teknol.)*, 3(1): 160-168.
- Darmawan, A., Muslimin, L., Arifah, S. and Mahatmi, H. (2020) Contamination of *Salmonella* spp in broiler chicken sold in several traditional markets in Makassar. *Indones.*

31. [1](#)g, S.K., Pusparajah, P., Ab Mutalib, N.S., Ser, H.L., [38](#)n, K.G. and Lee, L.H. (2015) *Salmonella*: A review on pathogenesis, epidemiology and antibiotic resistance. *Front. Life Sci.*, 8(3): 284-293.
32. [6](#)giorakos, A.P., Srinivasan, A., Carey, R.B., Carmeli, Y., [39](#)ngas, M.E., Giske, C.G., Harbarth, S., Hindler, J.F., [6](#)hlmeter, G., Liljequist, B.O., Paterson, D.L., Rice, L.B., [Stel](#) [38](#) J., Struelens, M.J., Vatopoulos, A., Weber, J.T. [48](#) Monnet, D.L. (2012) Multidrug-resistant, extensively drug-resistant and pandrug-resistant bacteria: An international expert proposal for interim standard definitions for acquired resistance. *Clin. Microbiol. Infect.*, 18(3): 268-281.
33. Rahmahani, J., Salamah, S., Mufasirin, M., Tyasningsih, W. and Effendi, M.H. (2020) Antimicrobial resistance profile of *Escherichia coli* from cloacal swab of domestic chicken in Surabaya traditional market. *Biochem. Cell. Arch.*, 20(1): [18](#)3-2997.
34. [46](#)man, S.U., Ali, T., Ali, I., Khan, N.A., Han, B. and [18](#), J. (2018) The growing genetic and functional diversity of extended-spectrum beta-lactamases. *Biomed. Res. Int.*, 2018(3): 9519718.
35. Raini, M. (2016) Fluoroquinolones antibiotics: Benefits and side effects. Vol. 26. In: Pusat Penelitian dan Pengembangan Biomedis dan Teknologi Dasar Kesehatan, [34](#)an Litbangkes, Kemenkes RI. p163-174.
36. [35](#)u, K.H.P., Effendi, M.H. and Rantam, F.A. (2020) A review of extended-spectrum β -lactamase (ESBL) producing *Klebsiella pneumoniae* and multidrug-resistant (MDR) on companion animals. *Syst. Rev. Pharm.*, 11(7): 270-277.
37. Putra, A.R.S., Effendi, M.H. and Kurniawan, F. (2020) Investigation of extended-spectrum beta-lactamase (ESBL) Producing *Escherichia coli* by vitek-2 on dairy cows in Surabaya, Indonesia. *Biochem. Cell. Arch.*, 20(2): 6773-6777.
38. Wibisono, F.J., Sumiarto, B., Untari, T., Effendi, M.H., Permatasari, D.A. and Witaningrum, A.M. (2020) Prevalence and risk factors analysis of multidrug resistance of *Escherichia coli* bacteria in commercial chicken, Blitar district. *J. Trop. Anim. Vet. Sci.*, 10(1): 15.
39. Wibisono, F.J., Sumiarto, B., Untari, T., Effendi, M.H., Permatasari, D.A. and Witaningrum, A.M. (2020) Short communication: Pattern of antibiotic resistance on extended-spectrum beta-lactamases genes producing *Escherichia coli* on laying hens in Blitar, Indonesia. *Biodiversitas*, 21(10): 4631-4635.
40. Sofiana, E.D., Pratama, J.W.A., Effendi, M.H., Plumeriastuti, H., Wibisono, F.M., Hartadi, E.B. and Hidayatullah, A.R. (2020) A review of the presence of antibiotic resistance problems on *Klebsiella pneumoniae* acquired from pigs: Public health importance. *Syst. Rev. Pharm.*, 11(9): 535-543.
41. Permatasari, D.A., Witaningrum, A.M., Wibisono, F.J. and Effendi, M.H. (2020) Detection and prevalence of multidrug-resistant *Klebsiella pneumoniae* strains isolated from poultry farms in Blitar, Indonesia. *Biodiversitas*, 21(10): 4642-4647.
42. Sharma, I. and Das, K. (2016) Detection of invA GENE IN ISOLATED *Salmonella* from marketed poultry meat by PCR assay. *J. Food Proc. Technol.*, 7(3): 1000564.
43. Yulian, R., Narulita, E., Iqbal, M., Sari, D.R., Suryaningsih, I. and Ningrum, D.E.A. (2020) Detection of virulence and specific genes of *Salmonella* sp. indigenous from Jember, Indonesia. *Biodiversitas*, 21(7): 2889-2892.
44. [129](#)H., Bhaskara, A., Megalis, C. and Tortorello, M.L. [47](#) [2](#) Transcriptomic analysis of *Salmonella* desiccation resistance. *Foodborne Pathog. Dis.*, 9(12): 1143-1151.
45. [7](#)rdo-Roa, C., Salazar, G.A., Noguera, L.P., Salazar-[7](#)hegarai, F.J., Vallejos, O.P., Suazo, I.D., Schultz, B.M., Corona [11](#) [9](#) Arrazola, I., Kalergis, A.M. and Bueno, S.M. [11](#) [9](#) Pathogenicity island excision during infection by *Salmonella enterica* serovar Enteritidis is required for crossing the intestinal epithelial barrier in mice to cause systemic infection. *PLoS Pathog.*, 15(12): e1008152.
46. Andhesfha, E., Indrawati, A. and Mayasari, N.L.P. (2019) Identification of Virulent Genes and Antibiotic Resistance Coding Genes in *Salmonella* Enteritidis from Layer and Broiler Farms in Java Island. Institut Pertanian Bogor, IPB Repository, Bogor, Indonesia.
47. Ansharieta, R., Effendi, M.H. and Plumeriastuti, H. (2021) Genetic identification of shiga toxin encoding gene from cases of multidrug resistance (MDR) *Escherichia coli* isolated from raw milk. *Trop. Anim. Sci. J.*, 44(1): 10-15.

Detection of invA virulence gene of multidrug-resistant Salmonella species isolated from the cloacal swab of broiler chickens in Blitar district, East Java, Indonesia

ORIGINALITY REPORT

19%

SIMILARITY INDEX

12%

INTERNET SOURCES

14%

PUBLICATIONS

10%

STUDENT PAPERS

PRIMARY SOURCES

- 1 www.researchsquare.com 1 %
Internet Source
- 2 Submitted to Montclair State University 1 %
Student Paper
- 3 Sohan Rodney Bangera, Shashikiran Umakanth, Goutam Chowdhury, Rudra Narayan Saha, Asish K. Mukhopadhyay, Mamatha Ballal. "Poultry: A receptacle for non-typhoidal Salmonellae and antimicrobial resistance", Iranian Journal of Microbiology, 2019 1 %
Publication
- 4 Yaovi M. G. Hounmanou, Anders Dalsgaard, Tirzania Frannetta Sopacua, Gazi Md. Noor Uddin et al. "Molecular Characteristics and Zoonotic Potential of Salmonella Weltevreden From Cultured Shrimp and Tilapia in Vietnam and China", Frontiers in Microbiology, 2020 1 %
Publication

5	opendentistryjournal.com Internet Source	1 %
6	www.ivis.org Internet Source	1 %
7	Submitted to University of Leicester Student Paper	1 %
8	Biao Tang, Abubakar Siddique, Chenhao Jia, Abdelaziz Ed-Dra, Jing Wu, Hui Lin, Min Yue. "Genome-based risk assessment for foodborne Salmonella enterica from food animals in China: A One Health perspective", International Journal of Food Microbiology, 2023 Publication	1 %
9	www.southbayrestoration.org Internet Source	1 %
10	Submitted to Abant İzzet Baysal Universitesi Student Paper	1 %
11	Catalina Pardo-Roa, Geraldine A. Salazar, Loreani P. Noguera, Francisco J. Salazar-Echegarai et al. "Pathogenicity island excision during an infection by Salmonella enterica serovar Enteritidis is required for crossing the intestinal epithelial barrier in mice to cause systemic infection", PLOS Pathogens, 2019 Publication	1 %

12	Submitted to University of Mindanao Student Paper	1 %
13	Submitted to Surabaya University Student Paper	1 %
14	Submitted to Institute of Graduate Studies, UiTM Student Paper	1 %
15	www.moh.gov.cy Internet Source	1 %
16	Lobna Salem, Maysa A. I. Awadallah, nashwa O.K., Marwa salem. "Zoonotic Importance of Salmonellosis in Chickens and Humans at Qualyobia Province", Egyptian Journal of Veterinary Sciences, 2016 Publication	<1 %
17	ijvr.shirazu.ac.ir Internet Source	<1 %
18	encyclopedia.pub Internet Source	<1 %
19	macsphere.mcmaster.ca Internet Source	<1 %
20	1library.net Internet Source	<1 %
21	vet.kku.ac.th Internet Source	<1 %

-
- 22 Submitted to Oxford & Cherwell Valley College <1 %
Student Paper
-
- 23 Submitted to National Chung Hsing University <1 %
Student Paper
-
- 24 worldwidescience.org <1 %
Internet Source
-
- 25 download.garuda.ristekdikti.go.id <1 %
Internet Source
-
- 26 jidc.org <1 %
Internet Source
-
- 27 journals.plos.org <1 %
Internet Source
-
- 28 www.ajol.info <1 %
Internet Source
-
- 29 Finn, Sarah, Orla Condell, Peter McClure, Alejandro Amézquita, and Séamus Fanning. "Mechanisms of survival, responses and sources of Salmonella in low-moisture environments", *Frontiers in Microbiology*, 2013. <1 %
Publication
-
- 30 Submitted to Scottish Agricultural College <1 %
Student Paper
-
- 31 www.conhecer.org.br <1 %
Internet Source
-

32

"Veterinary Microbiology", Wiley, 2022

Publication

<1 %

33

Submitted to CSU, San Francisco State University

Student Paper

<1 %

34

Submitted to Institute of International Studies

Student Paper

<1 %

35

Willis Gwenzi, Nhamo Chaukura, Norah Muisa-Zikali, Charles Teta, Tendai Musvuugwa, Piotr Rzymiski, Akebe Luther King Abia. "Insects, Rodents, and Pets as Reservoirs, Vectors, and Sentinels of Antimicrobial Resistance", Antibiotics, 2021

Publication

<1 %

36

journals.sagepub.com

Internet Source

<1 %

37

www.globalscienceresearchjournals.org

Internet Source

<1 %

38

Hend Ali Elshebrawy, Mahmoud Ahmed Mahros, Samir Mohammed Abd-Elghany, Mohammed Mohammed Elgazzar et al. "Prevalence and molecular characterization of multidrug-resistant and β -lactamase producing *Salmonella enterica* serovars isolated from duck, pigeon, and quail carcasses in Mansoura, Egypt", LWT, 2021

Publication

<1 %

39	Submitted to University of Derby Student Paper	<1 %
40	"Pharmaceuticals from Microbes", Springer Science and Business Media LLC, 2019 Publication	<1 %
41	app.trdizin.gov.tr Internet Source	<1 %
42	journalcra.com Internet Source	<1 %
43	real.mtak.hu Internet Source	<1 %
44	www.corpuspublishers.com Internet Source	<1 %
45	A.-P. Magiorakos. "Multidrug-resistant, extensively drug-resistant and pandrug- resistant bacteria: an international expert proposal for interim standard definitions for acquired resistance : International standard definitions for acquired resistance", Clinical Microbiology and Infection, 03/2012 Publication	<1 %
46	scirp.org Internet Source	<1 %
47	Mei-Jun Zhu, Xia Song, Hsieh-Chin Tsai, Xiaoye Shen, Michael Taylor, Juming Tang. "Desiccation and thermal resistance of	<1 %

Salmonella and Enterococcus faecium NRRL B-2354 in almond meal as impacted by water activity and storage temperature", Food Control, 2021

Publication

48

Monalisa S. M. Souto, Fernanda M. Coura, Elaine M. S. Dorneles, Ana Paula R. Stynen et al. "Antimicrobial susceptibility and phylotyping profile of pathogenic Escherichia coli and Salmonella enterica isolates from calves and pigs in Minas Gerais, Brazil", Tropical Animal Health and Production, 2016

Publication

<1 %

Exclude quotes Off

Exclude matches Off

Exclude bibliography Off