

Identification of BlaTEM and BlaSHV Genes of Extended Spectrum Beta Lactamase (ESBL) Producing Escherichia coli from Broilers Chicken in Blitar, Indonesia

by Freshinta Jellia Wibisono

Submission date: 29-Mar-2023 04:59PM (UTC+0700)

Submission ID: 2049861463

File name: um-beta-lactamase-esbl-producing-escherichia-coli-from-broil.pdf (1.34M)

Word count: 3947

Character count: 21732

Identification of Bla_{TEM} and Bla_{SHV} Genes of Extended Spectrum Beta Lactamase (ESBL) Producing *Escherichia coli* from Broilers Chicken in Blitar, Indonesia

Mustofa Helmi Effendi¹, Freshinta Jellia Wibisono², Adiana Mutamsari Witaningrum¹, Dian Ayu Permatasari¹

¹Division of Veterinary Public Health, Faculty of Veterinary Medicine, Universitas Airlangga, Surabaya, Jl. Mulyorejo, Kampus C FKH-UNAIR, Surabaya 60115, Indonesia

²Department of Veterinary Public Health, Faculty of Veterinary Medicine, Wijaya Kusuma Surabaya University, Surabaya, Indonesia

*Corresponding Author: Mustofa Helmi Effendi Email: mheffendi@yahoo.com

ABSTRACT

The purpose of this research was to identify bla_{TEM} and bla_{SHV} genes of extended spectrum beta lactamase (ESBL) of *Escherichia coli* from cloacal swab of broiler chicken in several broiler farms in Blitar. This study used 95 broiler chicken samples, with cloacal swab method. The samples were isolated and identified to find *Escherichia coli* with several procedures, Conkey Agar (MCA), Eosin Methylene Blue Agar (EMBA), Gram staining, indole test, Methyl Red-Voges Proskauer (MR-VP), citrate, and Triple Sugar Iron Agar (TSIA). ESBL-producing *Escherichia coli* bacteria isolated from cloacal swabs of broiler chicken were confirmed by the Double Disc Synergy Test (DDST). This confirmation test with DDST was conducted to evaluate the presence of inhibitory zones of ESBL activity with clavulanic acid using the Kirby-Bauer disk diffusion method on Mueller-Hinton agar (Merck, Germany). Double Disc Synergy Test uses the antibiotic disc Amoxicillin-clavulanic 30µg (Oxoid, England), Cefotaxime 30µg (Oxoid, England), Ceftazidime 30µg (Becton Dickinson, USA and Aztreonam 30µg (Oxoid, England). ESBL producing *E. coli* were 10 isolates and bla_{TEM} gene from 7 isolates and bla_{SHV} gene was no isolate. It can be explained that broiler chicken should be considered as a source of transmission for ESBL of *E. coli* to the public health.

Keywords: *Escherichia coli*, bla_{TEM} , bla_{SHV} , ESBL, Broiler chicken, Public health

Correspondence:

Mustofa Helmi Effendi
Division of Veterinary Public Health, Faculty of Veterinary Medicine, Universitas Airlangga, Surabaya, Jl. Mulyorejo, Kampus C FKH-UNAIR, Surabaya 60115, Indonesia
Email: mheffendi@yahoo.com

INTRODUCTION

The production of meat from broilers cannot be separated from the use of antibiotics. The main reason for the use of antibiotics is used as a treatment and growth promoter (1). The main reason for using antibiotics is that chickens are very susceptible to pathogenic diseases due to the high density of the cage which causes the chickens to become stressed. Many uncontrolled use of antibiotics will leave residues and cause pathogenic microbes to become resistant to antibiotics (2, 3). *Escherichia coli*, besides being an indicator of the level of sanitation in farms, can also act as a reservoir for the spread of antibiotic resistance because it can easily transfer genes for resistance to other bacteria. One of the characteristics of *E. coli* is that it has the potential to produce an extended spectrum beta-lactamase (ESBL) enzyme (4, 5). *E. coli* that produces ESBL has been isolated from food from animals, hospital environments, pets and feces. Several studies have also reported a high prevalence of ESBL producing *E. coli* in food-producing animals, food products, and the environment (6 - 8). *E. coli* is a polluting bacteria commonly found in meat. Meat contaminated with resistant *E. coli* bacteria can result in the transfer of bacteria from animals to humans via the food chain or direct contact. The long-term use of antibiotics can change the resistance of bacteria, both pathogens and normal microflora in living things (9, 10).

This study was conducted to obtain an overview of the molecular identification of bla_{TEM} and bla_{SHV} genes encoding ESBL producing *E. coli* from broiler chickens related to biosafety based on the high cases of resistance of *E. coli* in humans that can be transmitted from food product of animal origin. Broiler chickens for research were taken from several broiler farms in Blitar by cloacal swab. The broiler farms were chosen because of the high

supply of broiler chickens and the large number of purchases by consumers in the East Java province.

MATERIALS AND METHODS

Samples

The sample consisted of 95 cloacal swabs taken from broiler chickens, in Blitar, Indonesia.

Isolation and Identification

Ninety five samples taken by the cloacal swab method were then put into a vacutainer tube containing Buffered Peptone Water (BPW) and put into a cool box. Samples were cultured on Mac Conkey Agar (MCA) media for 24 hours at 37°C. *E. coli* bacterial colonies on MCA media grew with red, convex characteristics, and clear boundaries (2). Then suspected colonies of *E. coli* cultured on EMBA media, as shown on Figure 1. Colonies suspected of being *E. coli* bacteria on EMBA media were again stained with Gram to confirm the morphology and nature of the bacteria. Separate colonies that had been tested for Gram staining were followed by biochemical IMViC tests (Indol, MR-VP, citrate) and TSIA (11, 12). *E. coli* bacteria showed positive indole results and there was motility on the SIM media. In the Methyl-Red (MR) test, *E. coli* bacteria showed positive results and Voges-Proskauer (VP) with negative results. In the citrate test, *E. coli* bacteria showed negative results. TSIA test results showed Acid / Acid results, negative H₂S, and positive gas (2).

Confirmation for ESBL producing *Escherichia coli*

ESBL-producing *Escherichia coli* bacteria isolated from cloacal swabs of broilers chicken were confirmed by the Double Disc Synergy Test (DDST). This confirmation test with DDST was conducted to evaluate the presence of inhibitory zones of ESBL activity with clavulanic acid using the Kirby-Bauer disk diffusion method on Mueller-

Hinton agar (Merck, Germany). Double Disc Synergy Test uses the antibiotic disc Amoxicillin-clavulanic 30µg (Oxoid, England), Cefotaxime 30µg (Oxoid, England), Ceftazidime 30µg (Becton Dickinson, USA), and Aztreonam 30µg (Oxoid, England). Culture was incubated at 35-37 °C for 18-24 hours (13, 14). The results of the evaluation after incubation showed that the inhibition zone that appeared in the plate was measured based on CLSI 2018 guidelines (13) as shown on Figure 2.

Identification of *bla*_{TEM} and *bla*_{SHV} genes by Polymerase Chain Reaction (PCR)

The Extended spectrum beta-lactamase-producing *E. coli* bacteria which has been phenotypically confirmed by

DDST method, then genotypically confirmed by further analyzing the presence of *bla*_{TEM} and *bla*_{SHV} genes encoding ESBL producing *E. coli* by using molecular identification of PCR. Bacterial DNA was isolated with the QIAamp DNA mini kit (QIAGEN, Germany). *E. coli* ATCC 35218 was used as a positive control standard for strains of ESBL-producing bacteria and *E. coli* ATCC 25922 was used as a negative control or non-ESBL-producing bacteria (14). The PCR results was visualized by electrophoresis using 2% agarose gel (Invitrogen, USA) (15). The primers used to encode the *bla*_{TEM} and *bla*_{SHV} genes refer to Kurekci *et al.* (2017) (16), as shown in Table 1.

Table 1. Nucleotide sequence of the primers used in PCR

Targets	Sequence (amplicon sizes)	Annealing temperature	Reference
<i>bla</i> _{TEM} gene	F: ATAAAATTCTTGAAGACGAAA R: GACAGTTACCAATGCTTAATC (Amplicon: 1080 bp)	59 ° C	16
<i>bla</i> _{SHV} gene	F: CGGCCTTCACTCAAGGATGTA R: GTGCTGCGGGCCGGATAAC (Amplicon: 927 bp)	59 ° C	16

RESULTS

This study was conducted for the identification of *bla*_{TEM} and *bla*_{SHV} genes among ESBL-producing *E. coli* strains isolated from 95 cloacal swab samples in broilers poultry. The results 10 isolates were confirmation positive of ESBL-producing *E. coli* on broilers chicken cloacal swab by Double Disc Synergy Test (DDST), shown on Figure 2. The

presence of ESBLs-producing bacteria by the DDST to detect ESBL producing bacteria and then confirmed by polymerase chain reaction (PCR) and indicated 70% ESBL producing *E. coli* contain *bla*_{TEM} gene as shown in Table 2. For the identification of *bla*_{TEM} and *bla*_{SHV} genes present in ESBL producing *E. coli* PCR was used (16, 17), as shown on Figure 3.

Tabel 2. Extended Spectrum Beta Lactamase (ESBL) producing *E. coli* from Broilers in Blitar

Location	Sample size	<i>Escherichia coli</i>	ESBL DDST Test	PCR Product	
				<i>bla</i> _{TEM} Gene	<i>bla</i> _{SHV} Gene
Ponggok	18	18	1	1	Negative
Srengat	30	30	5	4	Negative
Kademangan	7	7	4	2	Negative
Talun	20	20	nil	Not tested	Not tested
Garum	20	20	nil	Not tested	Not tested
Total	95	95	10	7	0

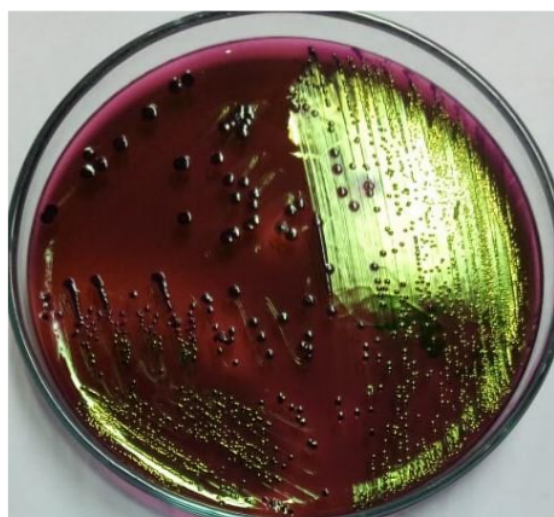


Figure 1. *Escherichia coli* on Eosin Methylen Blue Agar (green metallic color)

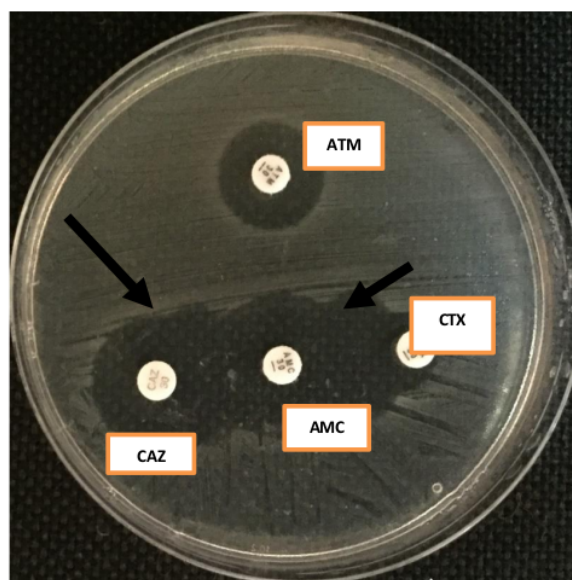


Figure 2. ESBL-producing *Escherichia coli* confirmation test with Double Disc Synergy Test (DDST) (indicator by black arrows)

Note: ATM: Aztreonam, CAZ: Ceftasidime, AMC: Amoxycillin clavulanic, and CTX: Cefotaxime.

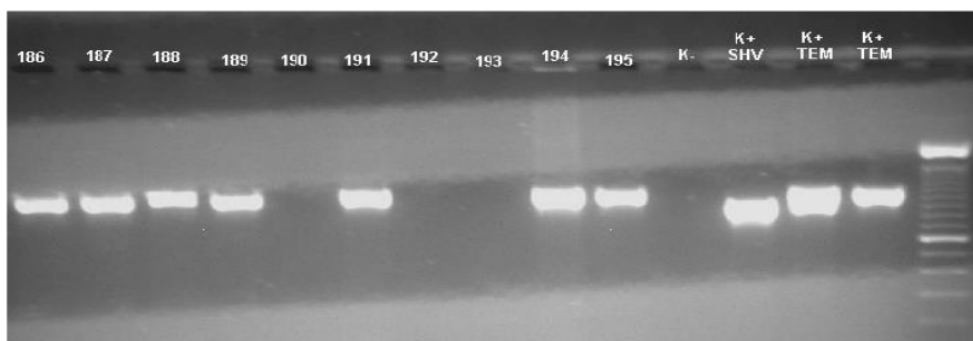


Figure 3. Molecular identification of *bla_{TEM}*, and *bla_{SHV}* genes by PCR (PCR product for *bla_{TEM}* gene = 1080 bp and PCR product for *bla_{SHV}* gene = 927 bp)

Legend: Code sample 190, 192 and 193 there were no *bla_{TEM}* and *bla_{SHV}* genes.

DISCUSSION

Table 2. showed the spread of ESBL-producing *Escherichia coli* in 3 districts from 5 sub-districts. Srengat sub-district has 5 samples, one sample from Ponggok sub-district and Kademangan district was 4 samples from 10 ESBL-producing *Escherichia coli* samples, while Talum and Garum sub-districts were not found any ESBL producing *Escherichia coli*. Several other studies have examined the number of *E. coli* isolates that isolated from animal and animal products, showing concordance results between studies as shown on Table 2. (18). The relative abundance of the ESBL producing *E. coli* in samples from cattle, dogs and poultry has been shown to vary with geographic location (7, 8, 19). In this study, isolates including ESBL producing *E. coli* were dominated by encoding *bla_{TEM}* gene. Molecular identification as shown in Table 2. that 70% (7/10) samples of ESBL producing *E. coli* encoding *bla_{TEM}* gene. The *bla_{TEM}* encoding gene is most commonly found in

E. coli. Molecular identification shown in Figure 3 that visualization of the *bla_{TEM}* gene fragment band. Electrophoresis results of *bla_{TEM}* gene represent samples describing the same fragments as positive controls with a gene length of 1080 bp, however there was not *bla_{SHV}* gene on represent samples (16), as shown on Figure 3.

The presence of the *bla_{TEM}* gene in ESBL producing *E. coli* showed that there has been the spread of bacteria that have ESBL enzymes. Based on this study, it was found that the prevalence of the *bla_{TEM}* gene ESBL producing *E. coli* from cloacal broiler swab samples with the highest number of *bla_{TEM}* gene was detected compared to other ESBL gene, namely *bla_{SHV}* gene. These results indicate that the genotype prevalence of ESBL is quite high in Blitar. Of the 10 ESBL isolates producing *E. coli*, only 3 isolates (30%) did not have the *bla_{TEM}* and *bla_{SHV}* genes encoding ESBL. However, it does not rule out that the negative sample has other ESBL genes that were not examined in

this study, considering that ESBL has several classes and each class has several genes. This was in accordance with Wibisono et al., (2020) stated that the bla_{CTX-M} gene is a high ESBL-producing *E. coli* gene that 45 isolates from 46 isolates (97.8%) of ESBL producing ESBL were bla_{CTX-M} encoding gene in from broilers (14). The incidence of ESBL producing *E. coli* from cloaca swabs on broilers chicken was consistent with the incidence of *E. coli* on slaughterhouses in Bogor by 8.6% (20), but smaller compared to the incidence of *E. coli* as ESBL producing *E. coli* from feces of broiler chickens in Bogor ESBL by 25% (21) and the incidence of ESBL producing *E. coli* in India on chicken was around 42% (22). ESBL bacteria can be identified by detecting the presence of ESBL encoding genes (23). This research showed that the bla_{TEM} gene was found in 70% ESBL samples. In this study, the ESBL encoding bla_{TEM} gene was detected dominance of ESBL producing *E. coli* samples from broilers chicken. The bla_{TEM} gene is the most prevalent ESBL type among animals product samples (24). In many countries bla_{TEM} gene is one of the most frequent ESBL types in ESBL-producing bacteria, causing human infections, therefore the evidence of bla_{TEM} gene in this study should be used as reference in controlling the spread of ESBL encoding gene in poultry farms (24). The presence of bla_{TEM} and bla_{SHV} genes are often reported in food from animal origin. In this study the findings of ESBL producing *E. coli* isolates were dominated by the presence of the bla_{TEM} gene. Similar to the research of Hinthong et al. (2017), it was mentioned that *E. coli* contamination found in animal product has a high tendency to be found in ESBL producing *E. coli* bacteria that have the bla_{TEM} gene. This showed that pathogenic *E. coli* sourced from milk is also exposed to antibiotics and has the potential to transfer these genes to other pathogenic bacteria under certain conditions (25). The spreading of genetic elements such as transposons, insertion and integrons in the bacteria cause ESBL genes move quickly from animals to humans or vice versa. Genetic factors can also spread the virus nature of resistance to other bacteria in animals digestive tract. The bacteria then spread from cage to the surrounding environment through facilitated waste by poor hygiene and sanitation, which pollutes land and water around agriculture. ESBL bacteria are also detected in vegetables, soil and surrounding water agriculture and markets (Wu et al., 2016). The spreading genetic elements can also occur in Gram positive bacteria moving rapidly from animals to humans or vice versa such as in livestock (26 - 30) or pets (31 -33). The presence of ESBL producing *E. coli* is threat to the public health and animal health (34, 35). This condition can occur in limited maintenance options. The steps that can be done is to build supervision program, supervising feed and poultry. Farmers also need to improve biosecurity practice. Garbage and chicken manure must be correct managed in an intensive production system, to prevent air, soil and water contamination, as well negative consequences for human health (36,37).

CONCLUSION

Ninety-five *E. coli* samples were isolated from cloacal swabs broilers chicken from broiler farms in Blitar, East Java, Indonesia. Ten *E. coli* were classified as ESBL producing bacteria. Through PCR testing, ESBL encoding gene of bla_{TEM} gene was identified in seven samples, and no one sample have bla_{SHV} gene. The presence of ESBL encoding gene in bacteria has potential to spread its

resistance to the other bacteria in the gastrointestinal tract of broilers chickens as well as in the poultry environment.

CONFLICT OF INTEREST 20

We certify that there is no conflict of interest with any financial, personal, or other relationships with other people or organization related to the material discussed in the manuscript.

3 KNOWLEDGEMENT

This research was funded by the Direktorat Riset dan Pengabdian Masyarakat, Deputy Bidang Penguatan Riset dan Pengembangan Kementerian Riset dan Teknologi/ Badan Riset dan Inovasi Nasional, Indonesia. This article is part of the research.

REFERENCES 9

1. Wasnaeni, Y, Iqbal, A., Ismoyowati. Broiler Farmers' Behavior in Administering Antibiotic and Types of Antibiotic Content in Commercial Feed (A Case Study). *Animal Production*. 2011;17(1): 62-68.
2. Wibisono FJ, Sumiarto B, Untari T, Effendi MH, Permatasari DA, Witaningrum AM. The Presence of Extended Spectrum Beta-Lactamase (ESBL) Producing *Escherichia coli* On Layer Chicken Farms In Blitar Area, Indonesia. *Biodiversitas*. 2020; 21 (6): 2667-2671.
3. Permatasari, D.A., Witaningrum, A.M., Wibisono, F.J., Effendi, M.H. Detection and prevalence of multidrug-resistant *Klebsiella pneumoniae* strains isolated from poultry farms in Blitar, Indonesia. *Biodiversitas*, 2020; 21 (10): 4642-4647.
4. Rahmahani, J., Salamah, Mufasirin, Tyasningsih, W., Effendi, M.H. Antimicrobial Resistance Profile of *Escherichia coli* From Cloacal Swab of Domestic Chicken in Surabaya Traditional Market. *Biochem. Cell. Arch*. 2020; 20 (1): 2993-2997.
5. Faridah, H.D., Dewi E.K., Fatimah, Effendi, M.H., Plumeriastuti, H. A Review of Antimicrobial Resistance (AMR) of *Escherichia Coli* on Livestock and Animal Products: Public Health Importance. *Sys Rev Pharm*, 2020; 11(11):1210-1218.
6. Putra AR. Effendi MH, Koesdarto 11 Suwarno S, Tyasningsih W, Estoepangestie AT. Detection of the extended spectrum β -lactamase produced by *Escherichia coli* from dairy cows by using the Vitek-2 method in Tulungagung regency, Indonesia. *Iraqi Journal of Veterinary Sciences*. 2020; 34 (1): 203-207.
7. Putra ARS, Effendi MH, Koesdarto 5, and Tyasningsih W. Molecular Identification of Extended Spectrum Beta-Lactamase (ESBL) Producing *Escherichia coli* Isolated from Dairy Cows in East Java Province, Indonesia. *Indian Vet. J.* 2019; 96 (10): 26 - 30.
8. Kristianingtyas L, Effendi, MH, Tyasningsih W, Kurniawan F. Genetic Identification of bla_{CTX-M} Gene and bla_{TEM} Gene on Extended Spectrum Beta Lactamase (ESBL) Producing *Escherichia coli* from 18s. *Indian Vet. J.* 2020; 97 (01): 17 - 21.
9. Wibowo, M.H, Nugroho, W.S., Asmara, W. Profile of *Escherichia coli* Plasmids Resistant to Some Antibiotics Isolated from Commercial Chicken Farms. *J. Sain Vet.*, 2011; 29(1): 43-50.
10. Harijani, N., Oetama, S.J.T., Soepranianondo, K., Effendi, M.H., Tyasningsih, W. Biological Hazard on Multidrug Resistance (MDR) of *Escherichia coli* Collected from Cloacal Swab of Broiler Chicken on

- Wet Markets Surabaya, *Indian Journal of Forensic Medicine & Toxicology*, 2020; 14(4) 3239-3244.
11. Effendi, M.H., Harijani, N., Budiarto, Triningtya, N.P., Tyasningsih, W., Plumeriastuti, H. Prevalence of Pathogenic *Escherichia coli* Isolated from Subclinical Mastitis in East Java Province, Indonesia. *Indian Vet. J.* 2019; 96 (03): 22 – 25.
 12. Effendi, [24], Harijani, N., Yanestria, S.M., Hastutiek, P. 2018. Identification of shiga toxin-producing *Escherichia coli* in raw milk samples from dairy cows in Surabaya, Indonesia. *Philippine J Vet Med.* 55(SI):109-114.
 13. CLSI. Performance Standards for Antimicrobial Susceptibility Testing. 28th ed. CLSI supplement M100. Wayne, PA: Clinical and Laboratory Standards Institute. 2018.
 14. Wibisono, F.J., Sumiarto, B., Untari, T., Effendi, M.H., Permatasari, D.A., Witaningrum, A.M. CTX Gene of Extended Spectrum Beta-Lactamase (ESBL) Producing *Escherichia coli* on Broilers in Blitar, Indonesia. *Sys Rev Pharm* 2020;11(7): 396-403.
 15. Yanestria, S.M., Rahmani, R.P., Wibisono, F.J., Effendi, M.H. Detection of *invA* gene of *Salmonella* from milkfish (*Chanos chanos*) at Sidoarjo wet fish market, Indonesia, using polymerase chain reaction technique, *Veterinary World*, 2019; 12(1): 170-175.
 16. Kurekci, C., Aydin, M., Yipel, M., [11]atouli, M., Gundogdu, A. Characterization of extended-spectrum β -lactamase (ESBL)-producing *Escherichia coli* in Asi (Orontes) River in Turkey. *J. Water Health.* 2017; 15: 788-798.
 17. Wibisono, F.J., Sumiarto, B., Untari, T., Effendi, M.H., Permatasari, D.A., Witaningrum, A.M. Short Communication: Pattern of antibiotic resistance on extended-spectrum beta-lactamases genes producing *Escherichia coli* on laying hens in Blitar, Indonesia. *Biodiversitas*, 2020; 21 (10): 4631- 4635.
 18. Saliu, E.M., Vahjen, W., Zentek, J. Types and prevalence of extended-spectrum beta-lactamases-producing Enterobacteriaceae in poultry. *Anim Heal Res Rev*, 2017; 18: 46-57.
 19. Effendi, M.H., Tyasningsih, W., Yurianti, Y.A., Rahmahani, J., Harijani, N., Plumeriastuti, [5] Presence of multidrug resistance (MDR) and extended -spectrum beta-lactamase (ESBL) of *Escherichia coli* isolated from cloacal swabs of broilers in several wet markets in Surabaya, Indonesia. *Biodiversitas*, 2021; 22 (1): 304-310.
 20. Sudarwanto, M.B., Lukman, D.W., Latif, H., Pisestyani, [13] Sukmawinata, E., Akineden, O., Usleber, E. CTX-M producing *Escherichia coli* isolated from cattle feces in Bogor slaughterhouse, Indonesia. *Asian Pac J Trop Biomed*, 2016; 6: 605-608.
 21. Masru [21] C.A., Sudarwanto, M.B., Latif, H. Incidence rate of *Escherichia coli* producing extended-spectrum beta-lactamases isolated from broiler faeces in Bogor City. *J Sains Vet*, 2016; 34: 42-49.
 22. Brower, C.H., Mandal, S., Hayer, S., Sran, M., Zehra, A., Patel, S.J., et al. The prevalence of Extended-spectrum beta-lactamases-producing multidrug-resistant *Escherichia coli* in poultry chickens and variation according to farming practices in Punjab, India. *Environ Health Perspect*, 2017;125: 1-10.
 23. Tutun, H., Karagoz, A., Altintas, L., Kocak, N. Determination of antibiotic susceptibility, ESBL genes, and pulsed-field gel electrophoresis profiles of extended-spectrum β -lactamase-containing *Escherichia coli* isolates. *Ankara Univ Vet Fak Derg*, 2019; 66: 407-416.
 24. Effendi, M.H., Bintari, I. G., Aksoro, E.B., Hermawan. I.P. Detection of bla_{TEM} Gene of *Klebsiella pneumoniae* Isolated from swab of food- producing animals in East Java. *Trop. Anim. Sci. J.*, 2018; 41:174–178.
 25. Hinthong, W., Pumipuntu, N., Santajit, S., Kulpeanprasit, S., Buranasinsup, S., Sookkrung, N., et al. Detection and Drug Resistance Profile of *Escherichia coli* from Subclinical Mastitis Cows and Water Supply in Dairy Farms in Saraburi Province, Thailand. *Peer J*, 2017;5: 1-16.
 26. Tyasningsih, W., Effendi, M. H., Budiarto, B., Syahputra, I. R. Antibiotic Resistance to Staphylococcus aureus and Methicillin Resistant Staphylococcus aureus (MRSA) Isolated from Dairy Farms in Surabaya, Indonesia. *Indian Vet. J.*, 2019; 96(11),27-31.
 27. Ramandinianto, S.C., Khairullah, A.R., Effendi, M.H., Tyasningsih, W., Rahmahani, J. Detection of Enterotoxin type B gene on Methicillin Resistant *Staphylococcus aureus* (MRSA) isolated from raw milk in East Java, Indonesia. *Sys Rev Pharm*, 2020; 11(7):290-298.
 28. Ramandinianto, S.C., Khairullah, A.R., Effendi, M.H. 2020. *MecA* gene and methicillin-resistant *Staphylococcus aureus* (MRSA) isolated from dairy farms in East Java, Indonesia. *Biodiversitas*, 21(8): 3562-3568.
 29. Harijani, N., Wandari, A., Effendi, M.H., Tyasningsih, W. Molecular Detection of Encoding Enterotoxin C Gene and Profile of Antibiotic Resistant on *Staphylococcus Aureus* Isolated from Several Dairy Farms in East Java, Indonesia. *Biochem. Cell. Arch.* 2020; 20 (1): 3081-3085.
 30. Effendi M. H., Hisyam M. A. M., Hastutiek P., Tyasningsih W. Detection of coagulase gene in *Staphylococcus aureus* from several dairy farms in East Java, Indonesia, by polymerase chain reaction, *Veterinary World*, 2019; 12(1): 68-71.
 31. Rahmaniar, R. P., Yunita, M. N., Effendi, M. H., Yanestria, S. M. Encoding Gene for Methicillin Resistant *Staphylococcus aureus* (MRSA) Isolated from Nasal Swab of Dogs. *Indian Vet. J.* 2020; 97(02), 37-40.
 32. Decline, V., Effendi, M. H., Rahmani, R. P., Yanestria, S. M., Harijani, N. Profile of antibiotic-resistant and presence of methicillin-resistant *Staphylococcus aureus* from nasal swab of dogs from several animal clinics in Surabaya, Indonesia. *Intl J One Health*, 2020; 6(1), 90-94.
 33. Yunita, M.N., Effendi, M.H., Rahmani, R. P., Arifah, S., Yanestria, S.M. Identification Of Spa Gene For Strain Typing Of Methicillin Resistant *Staphylococcus aureus* (MRSA) Isolated From Nasal Swab Of Dogs. *Biochem. Cell. Arch.* 2020; 20 (1), 2999-3004.
 34. [10]a, J., Sahoo, R.K., Debata, N.K., Subudhi, [10] Prevalence of TEM, SHV, and CTX-M Genes of Extended Spectrum β -Lactamase-Producing *Escherichia coli* Strains Isolated from Urinary Tract Infections in Adults. *Biotech*, 2017; 7: 1-7.
 35. Geser, N., Stephan, R., Hächler, H. Occurrence and characteristics of Extended Spectrum β -Lactamase (ESBL) Producing Enterobacteriaceae in Food Producing Animals, Minced Meat and Raw Milk. *BMC Vet. Res.*, 2012; 8 (21): 1-9.

36. Widodo, A., Effendi, M.H., Khairullah, A.R. Extended-spectrum beta-lactamase (ESBL)-producing *Escherichia coli* from livestock. *Sys Rev Pharm*, 2020; 11 (7): 382-392.
37. Randall, L.P., Clouting, C., Horton, R.A., Coldham, N.G., Wu, G., Clifton-Hadley, F.A., *et al.* Prevalence of *Escherichia coli* carrying extended-spectrum beta-lactamases (CTX-M and TEM-52) from broiler chickens and turkeys in Great Britain between 2006 and 2009. *J Antimicrob Chemother*, 2011; 66 (1): 86-95.

Identification of BlaTEM and BlaSHV Genes of Extended Spectrum Beta Lactamase (ESBL) Producing Escherichia coli from Broilers Chicken in Blitar, Indonesia

ORIGINALITY REPORT

11%

SIMILARITY INDEX

5%

INTERNET SOURCES

6%

PUBLICATIONS

5%

STUDENT PAPERS

PRIMARY SOURCES

1	Submitted to Columbus State University Student Paper	2%
2	Mayu Horie, Dongsheng Yang, Philip Joosten, Patrick Munk et al. "Risk Factors for Antimicrobial Resistance in Turkey Farms: A Cross-Sectional Study in Three European Countries", Antibiotics, 2021 Publication	1%
3	rjoas.com Internet Source	1%
4	www.inabj.org Internet Source	1%
5	Submitted to Teerthanker Mahaveer University Student Paper	1%
6	www.pjp.pps.org.pk Internet Source	1%
7	Submitted to St. Joseph's College	

8

Submitted to Athlone Institute of Technology

Student Paper

<1 %

9

www.neliti.com

Internet Source

<1 %

10

Submitted to Kenyatta University

Student Paper

<1 %

11

Moshe Wolk, Lea Valinsky, David Sompolinsky, Iancu Sechter, Herbert Schmidt, Shaul Tetry, Vered Agmon. " Endemic occurrence of infections by multidrug-resistant of four unique serotypes in the elderly population of Israel ", FEMS Microbiology Letters, 2004

Publication

<1 %

12

Submitted to iGroup

Student Paper

<1 %

13

Karl A. Bettelheim. " The Non-O157 Shiga-Toxigenic (Verocytotoxigenic) ; Under-Rated Pathogens ", Critical Reviews in Microbiology, 2008

Publication

<1 %

14

journal.unhas.ac.id

Internet Source

<1 %

15

onlinelibrary.wiley.com

Internet Source

<1 %

16	pub.epsilon.slu.se Internet Source	<1 %
17	Ferry Efendi, Lisa McKenna, Sonia Reisenhofer, Anna Kurniati, Eka Mishbhahatul Marah Has. "Experiences of Healthcare Worker Returnees in Their Home Countries: A Scoping Review", Journal of Multidisciplinary Healthcare, 2021 Publication	<1 %
18	ejournal.uin-malang.ac.id Internet Source	<1 %
19	researcharchive.lincoln.ac.nz Internet Source	<1 %
20	Cantor, J.M.. "Cerebral white matter deficiencies in pedophilic men", Journal of Psychiatric Research, 200802 Publication	<1 %
21	journals.stmjournals.com Internet Source	<1 %
22	med.unhas.ac.id Internet Source	<1 %
23	Hafza Shyla, Purbasha Saha, Kokati Venkata, Bhaskara Rao. "Biodegradation and decolorization of two different azo dyes, Reactive Blue 221, Direct Black 38, and assessment of the degraded dye	<1 %

metabolites", DESALINATION AND WATER TREATMENT, 2018

Publication

24

W.M. Lira. "The incidence of Shiga toxin-producing Escherichia coli in cattle with mastitis in Brazil", Journal of Applied Microbiology, 10/2004

Publication

<1 %

25

animalproduction.net

Internet Source

<1 %

26

is.muni.cz

Internet Source

<1 %

27

thejns.org

Internet Source

<1 %

28

"Posters", FEMS Microbiology Letters, 2003

Publication

<1 %

Exclude quotes Off

Exclude matches Off

Exclude bibliography Off