

ISSN: 1412-033X  
E-ISSN: 2085-4722

# BIODIVERSITAS

Journal of Biological Diversity

Volume 21 - Number 10 - October 2020



Front cover: *Leucopsar rothschildi* Stresemann, 1912  
(PHOTO: SHEAU TORNG LIM)

---

Published monthly

PRINTED IN INDONESIA

ISSN: 1412-033X

E-ISSN: 2085-4722



9 771412 033818



9 772085 472812

# BIODIVERSITAS

Journal of Biological Diversity  
Volume 21 – Number 10 – October 2020

ISSN/E-ISSN:

1412-033X (printed edition), 2085-4722 (electronic)

## EDITORIAL BOARD:

**Abdel Fattah N.A. Rabou** (Palestine), **Agnieszka B. Najda** (Poland), **Ajay Kumar Gautam** (India), **Alan J. Lymbery** (Australia), **Annisa** (Indonesia), **Bambang H. Saharjo** (Indonesia), **Daiane H. Nunes** (Brazil), **Darlina Md. Naim** (Malaysia), **Ghulam Hassan Dar** (India), **Hassan Pourbabaie** (Iran), **Joko R. Witono** (Indonesia), **Kartika Dewi** (Indonesia), **Katsuhiko Kondo** (Japan), **Kusumadewi Sri Yulita** (Indonesia), **Livia Wannorp** (Sweden), **M. Jayakara Bhandary** (India), **Mahdi Reyahi-Khoram** (Iran), **Mahendra K. Rai** (India), **Mahesh K. Adhikari** (Nepal), **Maria Panitsa** (Greece), **Mochamad A. Soendjoto** (Indonesia), **Mohib Shah** (Pakistan), **Mohamed M.M. Najim** (Srilanka), **Nurhasanah** (Indonesia), **Praptiwi** (Indonesia), **Rasool B. Tareen** (Pakistan), **Seyed Aliakbar Hedayati** (Iran), **Seyed Mehdi Talebi** (Iran), **Shahabuddin** (Indonesia), **Shahir Shamsir** (Malaysia), **Shri Kant Tripathi** (India), **Subhash C. Santra** (India), **Sugeng Budiharta** (Indonesia), **Sugiyarto** (Indonesia), **Taufiq Purna Nugraha** (Indonesia), **Yosep S. Mau** (Indonesia)

## EDITOR-IN-CHIEF:

**S u t a r n o**

## EDITORIAL MEMBERS:

English Editors: **Graham Eagleton** (grahameagleton@gmail.com), **Suranto** (surantouns@gmail.com); Technical Editor: **Solichatun** (solichatun\_s@yahoo.com), **Artini Pangastuti** (pangastuti\_tutut@yahoo.co.id); Distribution & Marketing: **Rita Rakhmawati** (oktia@yahoo.com); Webmaster: **Ari Pitoyo** (aripitoyo@yahoo.com)

## MANAGING EDITORS:

**Ahmad Dwi Setyawan** (unsjournals@gmail.com)

## PUBLISHER:

The Society for Indonesian Biodiversity

## CO-PUBLISHER:

Department of Biology, Faculty of Mathematics and Natural Sciences, Sebelas Maret University, Surakarta

## ADDRESS:

Jl. Ir. Sutami 36A Surakarta 57126. Tel. +62-271-7994097, Tel. & Fax.: +62-271-663375, email: editors@smujo.id

## ONLINE:

biodiversitas.mipa.uns.ac.id; smujo.id/biodiv



Society for Indonesia  
Biodiversity



Sebelas Maret University  
Surakarta

## GUIDANCE FOR AUTHORS

**Aims and Scope** *Biodiversitas*, *Journal of Biological Diversity* or abbreviated as *Biodiversitas* encourages submission of manuscripts dealing with all biodiversity aspects of plants, animals and microbes at the level of the gene, species, and ecosystem as well as ethnobiology.

**Article types** The journal seeks original full-length research papers, reviews, and short communication. Manuscript of original research should be written in no more than 8,000 words (including tables and picture), or proportional with articles in this publication number. Review articles will be accommodated, while, short communication should be written at least 2,000 words, except for pre-study.

**Submission** The journal only accepts online submission, through open journal system (<https://smujo.id/biodiv/about/submissions>) or email to the editors at [unsjournals@gmail.com](mailto:unsjournals@gmail.com). Submitted manuscripts should be the original works of the author(s). The manuscript must be accompanied by a cover letter containing the article title, the first name and last name of all the authors, a paragraph describing the claimed novelty of the findings versus current knowledge. Submission of a manuscript implies that the submitted work has not been published before (except as part of a thesis or report, or abstract); and is not being considered for publication elsewhere. When a manuscript written by a group, all authors should read and approve the final version of the submitted manuscript and its revision; and agree the submission of manuscripts for this journal. All authors should have made substantial contributions to the concept and design of the research, acquisition of the data and its analysis; drafting of the manuscript and correcting of the revision. All authors must be responsible for the quality, accuracy, and ethics of the work.

**Ethics** Author(s) must obedient to the law and/or ethics in treating the object of research and pay attention to the legality of material sources and intellectual property rights.

**Copyright** If and when the manuscript is accepted for publication, the author(s) still hold the copyright and retain publishing rights without restrictions. Authors or others are allowed to multiply article as long as not for commercial purposes. For the new invention, authors are suggested to manage its patent before published.

**Open access** The journal is committed to free-open access that does not charge readers or their institutions for access. Readers are entitled to read, download, copy, distribute, print, search, or link to the full texts of articles, as long as not for commercial purposes. The license type is CC-BY-NC-SA.

**Acceptance** The only articles written in English (U.S. English) are accepted for publication. Manuscripts will be reviewed by editors and invited reviewers (double blind review) according to their disciplines. Authors will generally be notified of acceptance, rejection, or need for revision within 1 to 2 months of receipt. The manuscript is rejected if the content does not in line with the journal scope, does not meet the standard quality, inappropriate format, complicated grammar, dishonesty (i.e. plagiarism, duplicate publications, fabrication of data, citations manipulation, etc.), or ignoring correspondence in three months. The primary criteria for publication are scientific quality and biodiversity significance. **Uncorrected proofs** will be sent to the corresponding author by email as *.doc* or *.docx* files for checking and correcting of typographical errors. To avoid delay in publication, corrected proofs should be returned in 7 days. The accepted papers will be published online in a chronological order at any time, but printed in the early of each month (12 times).

**A charge** Starting on January 1, 2019, publishing costs waiver is granted to authors of graduate students from **Least Developed Countries**, who first publish the manuscript in this journal. However, other authors are charged USD 250 (IDR 3,500,000). Additional charges may be billed for language editing, USD 75-150 (IDR 1,000,000-2,000,000).

**Reprints** The sample journal reprint is only available by special request. Additional copies may be purchased when ordering by sending back the uncorrected proofs by email.

**Manuscript preparation** Manuscript is typed on A4 (210x297 mm<sup>2</sup>) paper size, in a single column, single space, 10-point (10 pt) Times New Roman font. The margin text is 3 cm from the top, 2 cm from the bottom, and 1.8 cm from the left and right. Smaller lettering size can be applied in presenting table and figure (9 pt). Word processing program or additional software can be used, however, it must be PC compatible and Microsoft Word based (*.doc* or *.rtf*; not *.docx*). **Scientific names** of species (incl. subspecies, variety, etc.) should be written in italic, except for italic sentence. Scientific name (genera, species, author), and cultivar or strain should be mentioned completely for the first time mentioning it in the body text, especially for taxonomic manuscripts. Name of genera can be shortened after first mentioning, except generating confusion. Name of the author can be eliminated after first mentioning. For example, *Rhizopus oryzae* L. UICC 524, hereinafter can be written as *R. oryzae* UICC 524. Using trivial name should be avoided, otherwise generating confusion. **Biochemical and chemical nomenclature** should follow the order of the IUPAC - IUB. For DNA sequence, it is better used Courier New font. Symbols of standard chemical and abbreviation of chemistry name can be applied for common and clear used, for example, completely written butilic hydroxyl toluene (BHT) to be BHT hereinafter. **Metric measurement** use IS denomination, usage other system should follow the value of equivalent with the denomination of IS first mentioning. Abbreviations set of, like g, mg, mL, etc. do not follow by dot. Minus index (m<sup>-2</sup>, L<sup>-1</sup>, h<sup>-1</sup>) suggested to be used, except in things like "per-plant" or "per-plot". **Equation of mathematics** does not always can be written

down in one column with text, in that case can be written separately. **Number** one to ten are expressed with words, except if it relates to measurement, while values above them written in number, except in early sentence. The fraction should be expressed in decimal. In the text, it should be used "%" rather than "percent". Avoid expressing ideas with complicated sentence and verbiage, and used efficient and effective sentence.

**Title** of the article should be written in compact, clear, and informative sentence, preferably not more than 20 words. Name of author(s) should be completely written. **Name and institution** address should also be completely written with street name and number (location), postal code, telephone number, facsimile number, and email address. Manuscript written by a group, author for correspondence along with address is required. First page of the manuscript is used for writing above information.

**Abstract** should not be more than 200 words. **Keywords** is about five words, covering scientific and local name (if any), research theme, and special methods which used; and sorted from A to Z. All important **abbreviations** must be defined at their first mention. **Running title** is about five words. **Introduction** is about 400-600 words, covering the background and aims of the research. **Materials and Methods** should emphasize on the procedures and data analysis. **Results and Discussion** should be written as a series of connecting sentences, however, for manuscript with long discussion should be divided into subtitles. Thorough discussion represents the causal effect mainly explains for why and how the results of the research were taken place, and do not only re-express the mentioned results in the form of sentences. **Concluding** sentence should be given at the end of the discussion. **Acknowledgments** are expressed in a brief; all sources of institutional, private and corporate financial support for the work must be fully acknowledged, and any potential conflicts of interest are noted.

**Figures and Tables** of maximum of three pages should be clearly presented. Title of a picture is written down below the picture, while title of a table is written above the table. Colored figures can only be accepted if the information in the manuscript can lose without those images; chart is preferred to use black and white images. Author could consign any picture or photo for the front cover, although it does not print in the manuscript. All images property of others should be mentioned source. **There is no appendix**, all data or data analysis are incorporated into Results and Discussions. For broad data, it can be displayed on the website as a supplement.

**References** Author-year citations are required. In the text give the authors name followed by the year of publication and arrange from oldest to newest and from A to Z. In citing an article written by two authors, both of them should be mentioned, however, for three and more authors only the first author is mentioned followed by et al., for example: Saharjo and Nurhayati (2006) or (Boonkerd 2003a, b, c; Sugiyarto 2004; El-Bana and Nijs 2005; Balagadde et al. 2008; Webb et al. 2008). Extent citation as shown with word "*cit*" should be avoided. Reference to unpublished data and personal communication should not appear in the list but should be cited in the text only (e.g., Rifai MA 2007, pers. com. (personal communication); Setyawan AD 2007, unpublished data). In the reference list, the references should be listed in an alphabetical order (better, if only 20 for research papers). Names of journals should be abbreviated. Always use the standard abbreviation of a journal's name according to the **ISSN List of Title Word Abbreviations** ([www.issn.org/2-22661-LTWA-online.php](http://www.issn.org/2-22661-LTWA-online.php)). The following examples are for guidance.

### Journal:

Saharjo BH, Nurhayati AD. 2006. Domination and composition structure change at hemic peat natural regeneration following burning; a case study in Pelalawan, Riau Province. *Biodiversitas* 7: 154-158.

### Book:

Rai MK, Carpinella C. 2006. Naturally Occurring Bioactive Compounds. Elsevier, Amsterdam.

### Chapter in book:

Webb CO, Cannon CH, Davies SJ. 2008. Ecological organization, biogeography, and the phylogenetic structure of rainforest tree communities. In: Carson W, Schnitzer S (eds) *Tropical Forest Community Ecology*. Wiley-Blackwell, New York.

### Abstract:

Assaed AM. 2007. Seed production and dispersal of *Rhazya stricta*. 50<sup>th</sup> annual symposium of the International Association for Vegetation Science, Swansea, UK, 23-27 July 2007.

### Proceeding:

Alikodra HS. 2000. Biodiversity for development of local autonomous government. In: Setyawan AD, Sutarno (eds.) *Toward Mount Lawu National Park; Proceeding of National Seminary and Workshop on Biodiversity Conservation to Protect and Save Germplasm in Java Island*. Universitas Sebelas Maret, Surakarta, 17-20 July 2000. [Indonesian]

### Thesis, Dissertation:

Sugiyarto. 2004. Soil Macro-invertebrates Diversity and Inter-Cropping Plants Productivity in Agroforestry System based on Sengon. [Dissertation]. Universitas Brawijaya, Malang. [Indonesian]

### Information from internet:

Balagadde FK, Song H, Ozaki J, Collins CH, Barnet M, Arnold FH, Quake SR, You L. 2008. A synthetic *Escherichia coli* predator-prey ecosystem. *Mol Syst Biol* 4: 187. [www.molecularsystemsbiology.com](http://www.molecularsystemsbiology.com)

# BIODIVERSITAS

Journal of Biological Diversity  
Volume 21 - Number 10 - October 2020

---

- Ethnobotanical investigation of spice and condiment plants used by the Taming tribe in Aceh, Indonesia** 4467-4473  
ZIDNI ILMAN NAVIA, DITA AUDIRA, NURUL AFIFAH, KASANOVA TURNIP, NURAINI, ADI BEJO SUWARDI
- Daily activity, diet and habitat of Bali myna (*Leucopsar rothschildi*) in Nusa Penida, Bali, Indonesia** 4474-4482  
FRANSISCUS XAVERIUS SUDARYANTO, SATYAWAN PUDYATMOKO, TJUT SUGANDAWATY DJOHAN, JUSUP SUBAGJA, I WAYAN SUANA, LALU ACHMAD TAN TILAR WANGSAJATI SUKMARING KALIH, JUNITA HARDINI, JOBNICO SUBAGIO
- Culturable gut bacteria of Ikan Batak (*Neolissochilus sumatranus* Weber & de Beaufort, 1916) collected in Toba Samosir, Indonesia** 4483-4488  
ACHMAD DINOTO, RINI HANDAYANI, NINU SETIANINGRUM, HEDDY JULISTIONO
- A synopsis of Bambusoideae (Poaceae) in Lombok, Indonesia** 4489-4500  
I PUTU GEDE P. DAMAYANTO, HIMMAH RUSTIAMI, MIFTAHUDIN, TATIK CHIKMAWATI
- Selection of stain fungi on rubberwood (*Hevea brasiliensis*) and its growth response against chitosan** 4501-4508  
ALI BIN ABITHALIB SALMAN, LISDAR IDWAN SUDIRMAN, DODI NANDIKA
- Short Communication: Herpetofauna diversity at the University of Palangka Raya, Indonesia** 4509-4514  
ANDRI MAULIDI, TITIN PURNANINGSIH, ANITA MAULINA, YOHANES EDY GUNAWAN, MUHAMMAD RIZKI
- Diet composition and neighboring prey community of the Phuping newt (*Tylototriton uyeno*) in Maesa-Kogma Biosphere Reserve, Chiang Mai Province, northern Thailand** 4515-4523  
THANSUDA DOWWIANGKAN, YODCHAIY CHUAYNKERN, PONGRAT DUMRONGROJWATTANA, PRATEEP DUENGKAE
- Short Communication: Effect of cryopreservation on ultrastructure and mitochondrial function of albino *Pangasius catfish* spermatozoa** 4524-4528  
USWATUN HASANAH, ABINAWANTO, A. ALIMUDDIN, ARIEF BOEDIONO, ENI KUSRINI
- The practice and plants used in *Besale* ritual healing by The Anak Dalam Tribe in Nyogan Village, Jambi, Indonesia** 4529-4536  
REVIS ASRA, MARINA SILALAH, IZU ANDRY FIJRIDIYANTO
- Resistance level of several soybean lines of M6 generation to stem rot disease *Athelia rolfsii*** 4537-4542  
DIANA SOFIA HANAFIAH, IRDA SAFNI, LUTHFI A.M. SIREGAR, REVANDY I.M. DAMANIK, ANGGRIA LESTAMI, MIKA MATONDANG
- Response of parasitoids to invasive pest *Phenacoccus manihoti* Matile-Ferrero (Hemiptera: Pseudococcidae) on cassava crop in Bali, Indonesia** 4543-4549  
I WAYAN SUPARTHA, I KADEK WISMA YUDHA, PUTU ANGGA WIRADANA, I WAYAN SUSILA
- Phenotypic plasticity of eddoe and dasheen taro genotypes in response to saturated water and dryland cultivations** 4550-4557  
CARECA SEPDIHAN RAHMAT HIDAYATULLAH, EDI SANTOSA, DIDY SOPANDIE, ARIEF HARTONO

<b>Seed germination characteristics in different storage time of <i>Gmelina arborea</i> treated with ultrafine bubbles priming</b>	<b>4558-4564</b>
ISKANDAR Z. SIREGAR, KARIMA FAUZIAH MUHARAM, Y. ARIS PURWANTO, DEDE J. SUDRAJAT	
<b>Genetic structure of the <i>Capoeta aculeata</i> populations inferred from microsatellite DNA loci</b>	<b>4565-4570</b>
HABIBOLLAH GANDOMKAR, SEYED PEZHMAN HOSSEINI SHEKARABI, HOSSEIN ALI ABDOLHAY, SAJAD NAZARI, MEHDI SHAMSAEI MEHRJAN	
<b>Morphometric and genetic variations of species composers of nike fish assemblages in Gorontalo Bay Waters, Indonesia</b>	<b>4571-4581</b>
FEMY M. SAHAMI, RENE CHARLES KEPEL, ABDUL HAFIDZ OLII, SILVESTER BENNY PRATASIK, RIDWAN LASABUDA, ADNAN WANTASEN, SITTY AINSYAH HABIBIE	
<b>Heavy metals contaminants in the eggs and temperatures of nesting beaches of sea turtles in Kaimana, West Papua, Indonesia</b>	<b>4582-4590</b>
RICARDO F. TAPILATU, HENGKI WONA, RIMA HS. SIBURIAN, SEFRIANTO T. SALEDA	
<b>The quality of fermented goat milk produced by <i>Pediococcus acidilactici</i> BK01 on refrigerator temperature</b>	<b>4591-4596</b>
SRI MELIA, INDRI JULIYARSI, YULIANTI FITRI KURNIA, YUDHA ENDRA PRATAMA, DHIVA REZZY PRATAMA	
<b>Ethnomedicinal plants and practices related to pregnancy, childbirth, and postpartum healthcare of Minangkabau ethnic group, West Sumatra, Indonesia</b>	<b>4597-4605</b>
MARINA SILALAH, ARDIAN KHAIRIAH, NISYAWATI	
<b>Benthic macrofaunal assemblage in seagrass-mangrove complex and adjacent ecosystems of Punang-Sari Estuary, Lawas, Sarawak, Malaysia</b>	<b>4606-4615</b>
ABDULLA AL-ASIF, HADI BIN HAML, ABU HENA MUSTAFA KAMAL, MOHD HANAFI IDRIS, GEOFFERY JAMES GERUSU, JOHAN BIN ISMAIL, NURUL ULFAH KARIM	
<b>Chemical compounds contained in young and mature leaves of agarwood species <i>Wikstroemia tenuiramis</i> and its antioxidant properties</b>	<b>4616-4622</b>
RIDWANTI BATUBARA, TENGGU ISMANELLY HANUM, ODING AFFANDI, HENNY SRI WAHYUNI	
<b>Diversity and honey properties of stingless bees from meliponiculture in East and North Kalimantan, Indonesia</b>	<b>4623-4630</b>
SYAFRIZAL, RICO RAMADHAN ,8, IRAWAN WIJAYA KUSUMA, SAAT EGRA, KUNIYOSHI SHIMIZU,9, MAMORU KANZAKI, ENOS TANGKE ARUNG	
<b>Short Communication: Pattern of antibiotic resistance on extended-spectrum beta-lactamases genes producing <i>Escherichia coli</i> on laying hens in Blitar, Indonesia</b>	<b>4631-4635</b>
FRESHINTA JELLIA WIBISONO, BAMBANG SUMIARTO, TRI UNTARI, MUSTOFA HELMI EFFENDI, DIAN AYU PERMATASARI, ADIANA MUTAMSARI WITANINGRUM	
<b>Diversity and distribution of mollusks at three zones of mangrove in Pejarakan, Bali, Indonesia</b>	<b>4636-4641</b>
I KETUT GINANTRA, I KETUT MUKSIN, IDA BAGUS MADE SUASKARA, MARTIN JONI	
<b>Detection and prevalence of multidrug-resistant <i>Klebsiella pneumoniae</i> strains isolated from poultry farms in Blitar, Indonesia</b>	<b>4642-4647</b>
DIAN AYU PERMATASARI, ADIANA MUTAMSARI WITANINGRUM, FRESHINTA JELLIA WIBISONO, MUSTOFA HELMI EFFENDI	
<b>The ecology of <i>Aedes aegypti</i> and <i>Aedes albopictus</i> larvae habitat in coastal areas of South Sulawesi, Indonesia</b>	<b>4648-4654</b>
ARINI RATNASARI, ARIF RAHMAN JABAL, NUR RAHMA, SRI NUR RAHMI, MILA KARMILA, ISRA WAHID	
<b>Changes in microbial populations during co-composting of dewatered sewage sludge with pruning wastes in windrow piles</b>	<b>4655-4662</b>
AMIR HOSSEIN NAFEZ, MAHNAZ NIKAEEN, AKBAR HASSANZADEH, SAFOORA KADKHODAEI	

- Maximum entropy modeling for the conservation of *Hopea odorata* in riparian forests, central Thailand** 4663-4670  
LAMTHAI ASANOK, TORLARP KAMYO, DOKRAK MAROD
- Short Communication: Variations of morphology, anatomy, and metabolite profiles of *Citrus reticulata* Blanco cv. Tawangmangu grafts produced by shoot tip grafting using several rootstocks** 4671-4676  
EINSTIVINA NURYANDANI, RATNA SUSANDARINI, ARI INDRIANTO, TRI RINI NURINGTYAS, ARTNICE MEGA FATHIMA, SITI SUBANDIYAH
- The use of effector gene based-markers to facilitate identification of *Fusarium* sp. infected shallot in Java, Indonesia** 4677-4685  
LINA HERLINA, BONJOK ISTIAJI
- Biology, morphology and damage of the lesser Coconut weevil, *Diocalandra frumenti* (Coleoptera: Curculionidae) in southern Vietnam** 4686-4694  
HONG-UNG NGUYEN, THI-HIEN NGUYEN, NGUYEN-QUOC-KHANH CHAU, VAN-VANG LE, VAN-HAI TRAN
- The effectiveness of silvofishery system in water treatment in intensive whiteleg shrimp (*Litopenaeus vannamei*) ponds, Probolinggo District, East Java, Indonesia** 4695-4701  
MUHAMMAD MUSA, EVELLIN DEWI LUSIANA, NANIK RETNO BUWONO, SULASTRI ARSAD, MOHAMMAD MAHMUDI
- Consortium of endophytic bacteria and rhizobacteria effectively suppresses the population of *Pratylenchus coffeae* and promotes the growth of Robusta coffee** 4702-4708  
IIS NUR ASYIAH, IMAM MUDAKIR, MOHAMMAD HOESAIN, ANKARDIANSYAH PANDU PRADANA, ACHMAD DJUNAIDY, RIZA FAHLEVIA SARI
- Short Communication: Genetic variation of *Coelogyne pandurate*, *C. rumphii* and their hybrids based on RAPD markers** 4709-4713  
SRI HARTATI, ENDANG S. MULIAWATI
- Short Communication: The physical and chemical properties of nipah (*Nypa fructicans*) frond as an alternative feed for ruminants in Indonesia** 4714-4718  
MUHAMMAD AFDAL, TEJA KASWARI, SAITUL FAKHRI, HENI SURYANI
- Molecular identification of cellulase and protease producing *Bacillus tequilensis* UTMSA14 isolated from the geothermal hot spring in Lau Sidebuk Debuk, North Sumatra, Indonesia** 4719-4725  
EDY FACHRIAL, RADEN RORO JENNY SATYO PUTRI, I NYOMAN EHRICH LISTER, SARI ANGGRAINI, HARMILENI, TITANIA T. NUGROHO, SARYONO
- Isolation and characterization of lactic acid bacteria from fecal pellets, coelomic fluid, and gastrointestinal tract of *Nypa* worm (*Namalycastis rhodochorde*) from West Kalimantan, Indonesia** 4726-4731  
ARI HEPI YANTI, TRI RIMA SETYAWATI, RIKHSAN KURNIATUHADI
- Metabolic profile and skin-related bioactivities of *Ceriporus squamosus* hydromethanolic extract** 4732-4740  
WAILL A. ELKHATEEB, GHOSON M. DABA, MARWA O. ELNAHAS, PAUL W. THOMAS, MAHMOUD EMAM
- Hematological and antioxidants responses of dairy cow fed with a combination of feed and duckweed (*Lemna minor*) as a mixture for improving milk biosynthesis** 4741-4746  
UJANG HIDAYAT TANUWIRIA, ANDI MUSHAWWIR
- The production function and profitability analysis of *Gracilaria* sp. seaweed polyculture with milkfish (*Chanos chanos*) and black tiger shrimp (*Penaeus monodon*)** 4747-4754  
IIS DIATIN, IRZAL EFFENDI, MERI ALVINA TAUFIK
- Pharmacognostic, chemical and mucolytic activity study of *Malva pseudolavatera* Webb & Berthel. and *Malva sylvestris* L. (Malvaceae) leaf extracts, grown in Ecuador** 4755-4763  
MIRANDA-MARTÍNEZ MIGDALIA, SARMIENTO-TOMALÁ GLENDA MARCELA, CHÓEZ-GUARANDA IVÁN ANDRÉS, GUTIÉRREZ-GAITÉN YAMILET IRENE, RENÉ DELGADO-HERNÁNDEZ, CARRILLO-LAVID GABRIELA

<b>Thermostability, photostability, and toxicity of clove oil nanoparticles against <i>Cryptolestes ferrugineus</i> (Stephens) (Coleoptera: Laemophloeidae)</b> SILVI IKAWATI, TOTO HIMAWAN, ABDUL LATIEF ABADI, HAGUS TARNO	4764-4771
<b>Low genetic diversity and no genetic differentiation between maleo hatched at coastal and inland nesting grounds in North Sulawesi, Indonesia</b> ANDIE WIJAYA SAPUTRA, PRAMANA YUDA	4772-4777
<b>Profiling indigenous lead-reducing bacteria from Tempe Lake, Indonesia as bioremediation agents</b> AHMAD YANI, MOHAMAD AMIN, FATCHUR ROHMAN, ENDANG SUARSIN, WIRA EKA PUTRA	4778-4786
<b>The application of novel methods of Animal Barrier Screen and <i>Kelambu</i> Trap for mosquito's surveillance in South and West Sulawesi, Indonesia</b> NUR RAHMA, , HAJAR HASAN, ARINI RATNASARI, ISRA WAHID	4787-4794
<b>Genetic evaluation of tidal swamp rice from South Kalimantan, Indonesia based on the agro-morphological markers</b> DINDIN HIDAYATUL MURSYIDIN, IZHAR KHAIRULLAH	4795-4803
<b>Diversity of reef fish in Halang Melingkau Island, Kotabaru, South Kalimantan, Indonesia</b> FRANS TONY, SOEMARNO, DEWA GEDE RAKA WIADNYA, LUCHMAN HAKIM	4804-4812
<b>Bacterial (9A2H) enhancement alters the nematode community structure and decomposition pathway of amended nutrient-limited soil</b> DEMA R. LUCKYANA, I G. A. AYU RATNA PUSPITASARI, ARDHINI R. MAHARNING	4813-4820
<b>Insect diversity in various distances to forest edge in small nature reserve: A case study of Bantarbolang Nature Reserve, Central Java, Indonesia</b> DARSONO, EDY RIWIDIHARSO, SLAMET SANTOSO, EMING SUDIANA , EDY YANI, ERIE KOLLYA NASUTION, HEXA APRILLIANA, TITI CHASANAH	4821-4828
<b>Morphometric analysis of <i>Harpodon nehereus</i>, <i>Harpiosquilla raphidea</i>, and <i>Scylla serrata</i> in the coastal waters of Tarakan City, North Kalimantan, Indonesia</b> GAZALI SALIMERROR! REFERENCE SOURCE NOT FOUND., KUN RETNO HANDAYANI, SUTRISNO ANGGORO, AGUS INDARJO, AGUNG DHAMAR SYAKTI, ABDUL JABARSYAH IBRAHIM, JULIAN RANSANGAN, LUKMAN YUDHO PRAKOSO	4829-4838
<b>Community structure of arboreal and soil-dwelling arthropods in three different rice planting indexes in freshwater swamps of South Sumatra, Indonesia</b> TILI KARENINA, SITI HERLINDA, CHANDRA IRSAN, YULIA PUJIASTUTI, HASBI, SUPARMAN, BENYAMIN LAKITAN, HARMAN HAMIDSON, ABU Umayah	4839-4849
<b>The tolerance of oil palm (<i>Elaeis guineensis</i>) seedlings to Al stress is enhanced by citric acid and natural peat water</b> AGUS NUR HIDAYAH, SUDIRMAN YAHYA, DIDY SOPANDIE	4850-4858
<b>Characterization of BSL6 isolates isolated from honeybee hive and to determine its antibacterial activity</b> LENNI FITRI, YEKKI YASMIN, FAUZIAH, DWI ANDRI SEPTIANI, SUHARTONO	4859-4865
<b>Predicting potential impacts of climate change on the geographical distribution of mountainous selaginellas in Java, Indonesia</b> AHMAD DWI SETYAWAN, JATNA SUPRIATNA, NISYAWATI, ILYAS NURSAMSII, SUTARNO, SUGIYARTO, SUNARTO, PRAKASH PRADAN, SUGENG BUDIHARTA, ARI PITOYO, SAPTA SUHARDONO, PRABANG SETYONO	4866-4877
<b>DNA barcoding of crustacean larvae in Segara Anakan, Cilacap, Central Java, Indonesia using cytochrome c oxidase gene</b> KUSBIYANTO, DIAN BHAGAWATI, AGUS NURYANTO	4878-4887
<b>Rhizobacterial community structure in grafted tomato plants infected by <i>Ralstonia solanacearum</i></b> LISA NAVITASARI, TRI JOKO, RUDI HARI MURTI, TRIWIDODO ARWIYANTO	4888-4895



- Wild edible plants in four Agni tribes of Central-east and Northeast of Côte d'Ivoire: a comparative study** 4896-4902  
 DJAH FRANÇOIS MALAN, AMANI LÉOPOLD LITTA, MÉNÉKÉ DISTEL KOUGBO,  
 AMADOU LAMINE DIOP, KOUASSI GÉRARD KOUASSI
- Perception, attitude, and motive of local community towards forest conversion to plantation in Dharmasraya District, West Sumatra, Indonesia** 4903-4910  
 KORDIYANA K. RANGGA, YONARIZA, HELVI YANFIKA, ABDUL MUTOLIB
- Analysis of two whale shark watching destinations in Indonesia: status and ecotourism potential** 4911-4923  
 ASRIL DJUNAIDI, JAMALUDDIN JOMPA, NADIARTI NADIARTI, AHMAD BAHAR,  
 SUKIRMAN DJ. TILAHUNGA, DEBORAH LILIENTELD, MAULITA SARI HANI
- Short Communication: Rediscovery of *Psychotria* species, subspecies, and varieties collected in the '90s and new records of *Antirhea benguetensis* (Elmer) Valetton and *Ixora longifolia* Smith (Rubiaceae) in Northern Sierra Madre Natural Park, Luzon, Philippines** 4924-4935  
 RACHEL D. BIAG, , GRECEBIO JONATHAN D. ALEJANDRO
- Essential oils from *Vitex trifolia* as an effective repellent for *Aedes aegypti*** 4936-4944  
 NI LUH ARPIWI, I KETUT MUKSIN, ENIEK KRISWIYANTI
- Short Communication: Investigating environmental impacts of long-term monoculture of sugarcane farming in Indonesia through DPSIR framework** 4945-4958  
 RIVANDI PRANANDITA PUTRA, MUHAMMAD RASYID RIDLA RANOMAHERA,  
 MUHAMMAD SYAMSU RIZALUDIN, RAHMAD SUPRIYANTO, VITA AYU KUSUMA DEWI
- Penja fish (Genus: *Sicyopterus*) from Karama River, West Sulawesi, Indonesia: Growth pattern and habitat characteristics** 4959-4966  
 CUT MUTHIADIN, ISNA RASDIANAH AZIZ, HASYIMUDDIN, FATMAWATI NUR,  
 ST AISYAH SIJID, SAIFULLAH AZMAN, RENNY KURNIA HADIATY, ILHAM ALIMUDDIN
- Short Communication: Callus induction in purple and white-purple varieties of *Orthosiphon aristatus* (Blume) Miq.** 4967-4972  
 FAHRAUK FARAMAYUDA, TOTIK SRI MARIANI, ELFAHMI, SUKRASNO
- Parasitism of cassava mealybug by *Anagyrus lopezi*: Effects of varying host and parasitoid densities** 4973-4980  
 MUHAMMAD ZAINAL FANANI, AUNU RAUF, NINA MARYANA, ALI NURMANSYAH,  
 DADAN HINDAYANA
-

# Detection and prevalence of multidrug-resistant *Klebsiella pneumoniae* strains isolated from poultry farms in Blitar, Indonesia

DIAN AYU PERMATASARI<sup>1</sup>, ADIANA MUTAMSARI WITANINGRUM<sup>1</sup>, FRESHINTA JELLIA WIBISONO<sup>2</sup>,  
MUSTOFA HELMI EFFENDI<sup>1,3,♥</sup>

<sup>1</sup>Department of Veterinary Public Health, Faculty of Veterinary Medicine, Universitas Airlangga, Jl. Raya Mulyorejo, Surabaya 60115, East Java, Indonesia.

<sup>2</sup>Department of Veterinary Public Health, Faculty of Veterinary Medicine, Universitas Wijaya Kusuma Surabaya. Jl. Dukuh Kupang XXV No. 54, Surabaya 60225, East Java, Indonesia

<sup>3</sup>Halal Research Center, Universitas Airlangga, Jl. Raya Mulyorejo, Surabaya 60115, East Java, Indonesia. Tel./fax.: +62-31-5915551,

♥email: mheffendi@yahoo.com

Manuscript received: 31 August 2020. Revision accepted: 16 September 2020.

**Abstract.** Permatasari DA, Witaningrum AM, Wibisono FJ, Effendi MH. 2020. Detection and prevalence of multidrug-resistant *Klebsiella pneumoniae* strain isolated from poultry farms in Blitar, Indonesia. *Biodiversitas* 21: 4642-4647. Antibiotics are commonly used as therapy and disease control in humans and animals. However, the widespread use of antibiotics may also trigger the rise of antibiotic resistance. Therefore, the aim of this study was to study the occurrence of Multidrug-Resistant (MDR) of *Klebsiella pneumoniae* from poultry farms in Blitar. Chicken cloacal swabs from 63 poultry farms (32 broilers and 31 layers) were taken randomly, using total samples 160 broilers and 155 layers. The collected swab samples were inoculated on MacConkey agar medium for isolation and identification. Single colony was isolated after primary positive cultures and identified by using the IMViC test and TSIA. 28 (8.88%) out of samples were found positive for *Klebsiella pneumoniae*. The antimicrobial confirmation test showed that 53.57% of the *K. pneumoniae* isolates were Multi-Drug Resistance (MDR) bacteria. The percentage of MDR bacteria against different antibiotics included ampicillin 75%, Erythromycin 42.86%, Tetracycline 35.72%, Sulfamethoxazole 32.14% and Streptomycin 21.4%. This study confirmed that the percentage of resistant isolates of *Klebsiella pneumoniae* from 5 antimicrobial agents of broiler chicken are higher than layer chicken. The presence of multidrug-resistant bacteria is a threat to public health and livestock. The impact of these conditions leaves a limited treatment option as chicken farmers in Indonesia still using antibiotics without veterinarian supervision.

**Keywords:** Antibiotic resistance, *Klebsiella pneumoniae*, MDR, poultry farms, public health

## INTRODUCTION

Antibiotics are commonly used as therapy and to control microbial infections in humans and animals. However, the widespread use of an antibiotic may trigger the rise of antibiotic resistance not only in humans but in animals also (Kempf et al. 2015; Hayati et al. 2019). The European Centre for Disease Prevention and Control/European Food Safety Authority/European Medicines Agency (ECDC/EFSA/EMA) joint report in 2014 stated that the average antibiotic consumption in animals (152 mg/kg) was higher than in humans (124 mg/kg). It is estimated that two-thirds of antimicrobials produced globally are consumed in the livestock and poultry (CDDEP 2015). The raising small-scale commercial poultry farms (PFs) demands low investment, it has been expanding at a high rate, mostly in the rural and semi-urban areas which contribute to national economic growth, considerably. These PFs are often run by unskilled, non-professional managers having poor knowledge of biosecurity alike other developing countries (Conan 2012). Since most of these poultry farms neither do have good surveillance systems nor well-documented monitoring mechanisms to record potential pathogenic microorganisms or other poultry-hazards claiming serious public health

implications (Nahar et al. 2014). The increase in the prevalence of infections caused by multidrug-resistant (MDR) bacteria belonging to the Enterobacteriaceae group poses a great concern since these are common natural inhabitants of microbiome (Navon-Venezia et al. 2017).

*Klebsiella pneumoniae* is a Gram-negative, rod-shaped, non-motile, encapsulated opportunistic pathogen. This bacterium is part of the Enterobacteriaceae family, facultative anaerobe with the mucoid colony (Fielding et al. 2012; Al-Ammiri et al. 2016). The increase of multidrug resistance in Gram-negative bacteria is now a serious challenge (Exner et al. 2017). Five factors have been proposed for *Klebsiella* pathogenesis, including capsular antigen (as the most important virulence factor in *K. pneumoniae*), adhesives, lipopolysaccharide, siderophore (Struve et al. 2009). Cases of multidrug resistance (MDR) have been reported in *K. pneumoniae* isolates against more than three types of antibiotics (Hayati et al. 2019). Notably, the prevalence of antibiotic resistance is increasing among Enterobacteriaceae, including *K. pneumoniae* strains isolated from animals (Davis and Price 2016). Due to the extensive use of antibiotics in humans, veterinary medicine, and agricultural practice during the last few decades, the emergence of *K. pneumoniae* strains that harbor various resistance genes has increased

considerably *K. pneumoniae* has acquired increasingly high levels of antimicrobial drug resistance (Wu et al. 2019).

Antimicrobial resistance is often caused by overuse of antibiotics in human and animal medicine and has now emerged as a global health problem (Pitout and Laupland 2008; Widodo et al. 2020). The resistance of microorganisms to antimicrobial drugs that are initially sensitive is called antimicrobial resistance (AMR). This is a natural process and is facilitated by excessive antimicrobial abuse (Riwu et al. 2020). Gram-negative bacteria have developed this resistance by developing enzymes that can destroy antibiotics, by having resistant metabolic pathways, and by changing receptors for antimicrobial agents (Okonko et al. 2009; Wibisono et al. 2020). *K. pneumoniae* has two types of antibiotic resistance mechanisms. One mechanism involves the expression of ESBL, which develops resistance in bacteria to cephalosporins and monobactams. The second mechanism involves carbapenemase expression, which helps develop resistance to all available  $\beta$ -lactams (Riwu et al. 2020). The presence of the Extended Spectrum Beta-Lactamase (ESBL) gene consisting of SHV, TEM, and CTX-M encoded by plasmids in *K. pneumoniae* has an impact on resistance to different antibiotics (Ahmed et al. 2014). *Klebsiella* spp has also developed antimicrobial resistance, which is an alarming situation in the field of human medicine (Lynch et al. 2013). This antimicrobial treatment failure is safe for humans and animals (Guardabassi et al. 2004).

Antibiotic sensitivity of *K. pneumoniae* has not been well studied, especially in poultry. The use of antimicrobials in broiler chickens was higher than that of laying hens, this was due to maintaining the speed of body weight growth of broilers. Whereas in laying hens there are fewer antimicrobials just to maintain egg production (Wibisono et al. 2020). Given the differences between the types, it is necessary to understand how the incidence of resistance varies in order to precisely provide the policies in which they will have the greatest impact (Brower et al. 2017). The aim of this study was to study the occurrence of Multidrug-Resistant (MDR) isolates of *Klebsiella pneumoniae* from poultry farms in Blitar.

## MATERIALS AND METHODS

### Research design, location, and sampling

This cross-sectional study was done in May-June 2019. Chicken cloacal swabs were collected randomly from 63 poultry farms in Blitar (31 layers and 32 broilers) with total of 160 cloacal swabs of broilers and 155 cloacal swabs of layers. The cloacal swabs were transferred by using transport swabs in Amies transport medium from Biomedics-Madrid, Spain (Vasilakopoulou et al. 2020), and carrying by the cooler box to the laboratory for bacterial isolation and identification.

### Isolation and identification of *Klebsiella pneumoniae*

Samples were brought to the laboratory for the isolation and identification of *K. pneumoniae* bacteria. Isolated

colony of bacteria was identified as *Klebsiella pneumoniae* based on Gram's staining, colony character on selective MacConkey Agar media from Oxoid-England incubated at 35-37°C for 20-24 hrs (Effendi et al. 2018). Single colonies were isolated after primary positive cultures and identified by using the IMViC test (Indol-Motility, Methyl Red, Voges Proskauer, Citrate) and Triple Sugar Iron Agar (TSIA) (Arya et al. 2020).

### Antibiotic sensitivity confirmation test

All Isolated *K. pneumoniae* bacteria were tested for their sensitivity to antibiotics with the disc diffusion test by Kirby-Bauer method on Mueller-Hinton Agar Merck-Germany (Effendi et al. 2019). All disks used in the disc diffusion test were obtained from Oxoid, England, in the following concentrations: Ampicillin (Amp 10  $\mu$ g), Streptomycin (S 10  $\mu$ g), Tetracycline (TE 30  $\mu$ g), Erythromycin (E 2  $\mu$ g), and Sulfamethoxazole (SXT 25  $\mu$ g). The culture turbidity was adjusted to 0.5 McFarland standard. The sterile cotton swab was dipped into the suspension and spread evenly over the entire Mueller-Hinton Agar surface (Geta et al. 2019). The antibiotics discs were placed onto the surface of the inoculated plates and incubated at 37°C for 16-18 hrs. The zone diameters of inhibition were measured in millimeters and interpreted as susceptible, intermediate, and resistant (CLSI 2017). The evaluation of specimens for antibiotic resistance was conducted according to the clinical and laboratory standards institute (CLSI) guidelines (Watts 2013).

## RESULTS AND DISCUSSION

### Isolation and identification of *Klebsiella pneumoniae*

The result of isolation and identification of 155 samples of cloacal swabs on layer chicken farms showed that 6 (3.87%); and 160 samples of cloacal swabs on broiler chicken farms showed that 22 (13.75%) isolates were positive of *K. pneumoniae*. The distribution of samples showing positive growth on MacConkey Agar was as follows: 5 samples in Srengat, 2 in Undanawu, 8 in Talun, 3 in Kademangan, 4 in Bakung, 3 in Ponggok, and 3 in Garum. Positive samples of *K. pneumoniae* on MacConkey Agar looks pink with colonies culture looks very mucoid (Masruroh et al. 2016). *K. pneumoniae* identified with lactose fermentation pink and dome-shaped mucoid colonies (Figure 2) and also confirmed by a biochemical test using IMViC and Triple Sugar Iron Agar. The biochemical test identified lactose fermenter, non-motile, Indole production negative, Voges-Proskauer test positive, Methyl Red negative, Citrate utilization test positive, TSIA acid/ acid with gas (Figure 3). In the antibiotic sensitivity test, the positive organism was sensitive to Ampicillin and Streptomycin, while it was resistant to Tetracycline, Erythromycin, and Sulfamethoxazole (Figure 4). The presence of multidrug-resistant (MDR) producing *K. pneumoniae* in layer and broiler chicken farms, shown in Table 1.

**Table 1.** Data of multidrug-resistant *Klebsiella pneumoniae* in poultry farms

Type of livestock	Location	Farms	Number of samples	<i>Klebsiella pneumoniae</i>		MDR	
				Positive	Percentage	Positive	Percentage
Layer	Srengat	17	85	1	1.17%	0	0%
	Udanawu	6	30	2	6.67%	1	50%
	Talun	4	20	2	10%	2	100%
	Kademangan	4	20	1	5%	0	0%
	<b>Sub-total</b>	<b>31</b>	<b>155</b>	<b>6</b>	<b>3.87%</b>	<b>3</b>	<b>50%</b>
Broiler	Srengat	6	30	4	13%	1	25%
	Kademangan	4	20	2	10%	1	50%
	Bakung	4	20	4	20%	3	75%
	Ponggok	10	50	3	6%	2	66.67%
	Talun	4	20	6	30%	3	50%
	Garum	4	20	3	15%	2	66.67%
	<b>Sub-total</b>	<b>32</b>	<b>160</b>	<b>22</b>	<b>13.75%</b>	<b>11</b>	<b>50%</b>
<b>Total</b>		<b>63</b>	<b>315</b>	<b>28</b>	<b>8.88%</b>	<b>15</b>	<b>53.57%</b>

**Table 2.** Antimicrobial resistance pattern of *Klebsiella pneumoniae* isolates

Antimicrobial agent	Number percentage of sensitive isolates		Number percentage of intermediate isolates		Number percentage of resistant isolates	
	Layer	Broiler	Layer	Broiler	Layer	Broiler
Ampicillin	2 (7.14%)	0 (0%)	0 (0%)	1 (3.57%)	4 (14.29%)	21 (75%)
Streptomycin	4 (14.29%)	14 (50%)	0 (0%)	2 (7.14%)	2 (7.14%)	6 (21.43)
Erythromycin	0 (0%)	6 (21.43)	3 (10.71%)	4 (14.29%)	3 (10.71%)	12 (42.86%)
Tetracycline	3 (10.71%)	11 (39.29%)	0 (0%)	1 (3.57%)	3 (10.71%)	10 (35.71%)
Sulfamethoxazole	3 (10.71%)	8 (28.57%)	0 (0%)	5 (17.86%)	3 (10.71%)	9 (32.14%)

### Disc diffusion test for antibiotic sensitivity confirmation test

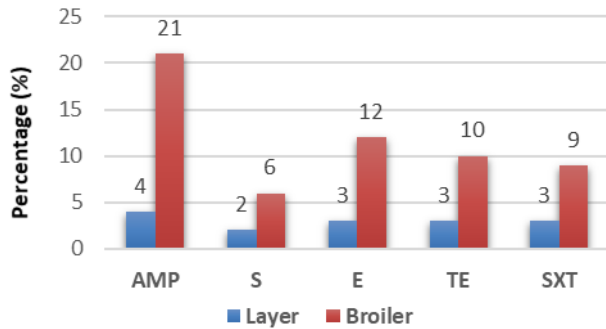
The number of positive samples from broilers exceeded the one obtained from Layers (11 and 3, respectively). Isolated strains (315) originated from 31 out of the 32 visited farms, i.e., 53.57% of the farms were positive for multidrug-resistant *K. pneumoniae*. As shown in table 1, the highest prevalence multidrug-resistant *K. pneumoniae* was detected in Talun whereas, the lowest was detected in Srengat and Kademangan. Percentages of isolates classified as sensitive, intermediate, or resistant were used to summarize resistance prevalence overall and disaggregated by farm (Table 2, Figure 1). A high percentage of *K. pneumoniae* resistant to AMP (75%), E (42.86%), TE (35.72%), SXT (32.14%), and S (21.4%) was observed. The degree of resistance to Ampicillin, Erythromycin, Tetracycline, Sulfamethoxazole, and Streptomycin was consistently high levels only in broiler farms.

### Discussion

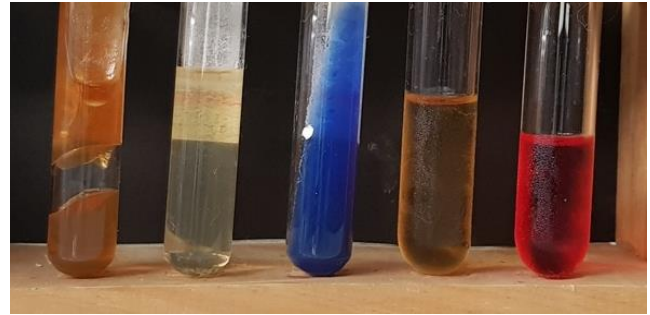
In this research, the results of biochemical test identified lactose fermenter, non-motile, Indole production negative, Voges-Proskauer test positive, Methyl Red negative, Citrate utilization test positive, TSIA Acid/ Acid with gas. The isolation and identification results were confirmed by *K. pneumoniae* character according to El-Mansi et al. (2000) in order to verify that the cured strain was indeed a derivative of *K. pneumoniae*, the IMViC tests were carried out routinely.

The antimicrobial confirmation test showed that 53.57% of the *K. pneumoniae* isolates were MDR bacteria. These results corroborate similar studies in broiler productions, but the prevalence reported here is similar or higher (Dierikx et al. 2013; Kar et al. 2015; Laube et al. 2013). Multidrug-resistant cases in *K. pneumoniae* caused longer treatment and were difficult to cure. The pattern of antibiotic resistance is expected to be a guide in selecting the right antibiotic for treatment. The widespread use of antibiotics without close supervision can lead to antibiotic resistance (Hayati 2019). Until recently, antibiotics were easy to obtain and could be used without veterinary supervision. As many as 72.3% of chicken farmers in Indonesia still using antibiotics without veterinarian supervision (Arief et al. 2016).

The resistance against ampicillin was 75%, erythromycin 42.86%, tetracycline 35.72%, sulfamethoxazole 32.14%, streptomycin 21.4%. Rashed et al. (2013) and Effendi et al. 2018 reported that *Klebsiella* spp. showed higher resistance against ampicillin (74%) and amoxicillin (90%). This resistance of *Klebsiella* spp. against amoxicillin was not in accordance with this result. *Klebsiella* spp. were naturally sensitive or intermediate to penicillin, all tested aminoglycosides, quinolones, tetracyclines, trimethoprim, cotrimoxazole, chloramphenicol, and nitrofurantoin (Stock and Wiedemann 2001). These are used singly or in combination with 2 or more ABs, which has been reported to contribute significantly to the emergence of multidrug-resistant in chicken isolates (McEwen and Fedorka-Cray 2002).



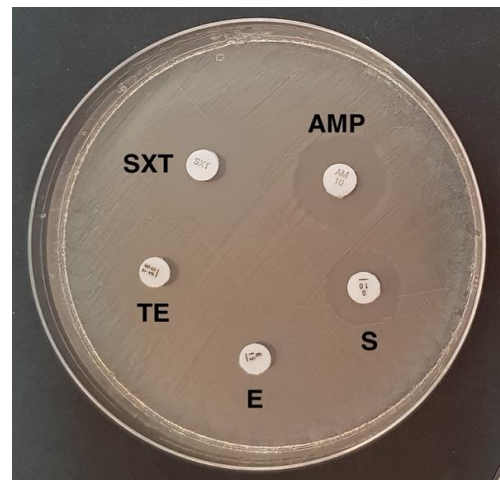
**Figure 1.** Percentage of antimicrobial resistance *Klebsiella pneumoniae*



**Figure 3.** Identification *Klebsiella pneumoniae* by IMViC and TSIA



**Figure 2.** *Klebsiella pneumoniae* on MacConkey agar; grey arrow is dome-shaped mucoid colony



**Figure 4.** Antibiotic sensitivity confirmation test by disc diffusion by Kirby-Bauer method on Mueller-Hinton agar. Information: ampicillin (AMP), streptomycin (S), tetracycline (TE), erythromycin (E), and sulfamethoxazole (SXT).

The presence of multidrug-resistant bacteria is a threat to public health and livestock. These conditions could result in limited treatment options. The only laws on antimicrobial use in food animal production for domestic consumption mandate withdrawal of antimicrobials before processing of food animal products (Brahmachari et al. 2013). Furthermore, multidrug-resistant bacteria triggered the use of an antibiotic that has no longer been used for toxicity, such as colistin (Fard 2004). Measures that could be undertaken were building surveillance programs, conducting surveillance on feed and livestock. Breeders also need to improve biosecurity practice. Evidence indicates that antimicrobial residues in manure might also be responsible for the contamination of soil, surface water, and groundwater resources close to farms involved in intensive broilers rearing activities (FAO 2008). Policy actions should be implemented immediately in order to safeguard the effectiveness of antimicrobials since antimicrobial effectiveness is a globally shared resource and responsibility (Ganguly et al. 2011). Litter and manure waste must be properly managed in intensive production systems to prevent the contamination of air, soil, and water,

as well as negative consequences on human health (Thyagarajan 2014).

The use of antimicrobials in poultry is a well-known catalyst for developing resistance in bacteria (Wibisono et al. 2020), but unfortunately, no reliable data and information are available regarding the use of antimicrobials in poultry (Rahmahani et al. 2020). There is excessive use of antimicrobials in the livestock sector compared to pet animals. The risk of AMR is due to the close association between pet animals and humans and this association provides opportunities for two ways of commensal and pathogenic transfer (Pomba et al. 2017). ESBL is a  $\beta$ -lactamase that can hydrolyze oxyimino-based  $\beta$ -lactams, such as cefotaxime, ceftazidime, and aztreonam (Putra et al. 2019). Most *K. pneumoniae* produce SH-based non-ESBL  $\beta$ -lactamases such as SHV, and some *Escherichia coli* produce TEM, which is also a non-ESBL  $\beta$ -lactamase. Enzymes such as SHV-1 and TEM-1 can hydrolyze ampicillin, but oxyiminocephalosporins including ceftriaxone, cefotaxime, and ceftazidime cannot be hydrolyzed. These antibiotics are well designed to

counter hydrolysis by these bacterial enzymes (Karanika et al. 2016; Putra et al. 2020).

This study examined the prevalence of resistance in farms suspected of using antimicrobials. Given these limitations, our study mainly compared the resistance profile among different farms (broiler and layer) affecting resistance development. Moreover, it is possible to reduce the prevalence of antimicrobial resistance by placing restrictions on the use of antimicrobials in food animal production without negative impacts on productivity, as evidenced by the experience of both the poultry and pork industries in Denmark (Levy 2014).

In conclusion, this study confirms that the percentage of resistant isolates of *K. pneumoniae* from 5 antimicrobial agents of broiler chicken samples was higher than layer chicken sample. This study also showed highest levels of antibiotic resistance to broiler chicken samples to Ampicillin (AMP) antibiotic. Total of 75% *K. pneumoniae* from broiler chicken samples was resistant to Ampicillin (AMP) antibiotic. The presence of multidrug-resistant bacteria is a threat to public health and animals. The impact of these conditions limited and harder the treatment option as chicken farmers in Indonesia still using antibiotics without veterinarian supervision. Policy and veterinarian supervision are important to implement for disease treatment and animal husbandry in Indonesia.

## ACKNOWLEDGEMENTS

This research was in part funded by the *Direktorat Riset dan Pengabdian Masyarakat, Deputy Bidang Penguatan Riset dan Pengembangan, Kementerian Riset dan Teknologi/ Badan Riset dan Inovasi Nasional, Indonesia* in fiscal year 2020 with grant number: 756/UN3.14/PT/2020 and also the authors would like to thank to Blitar Animal Husbandry for the cooperating.

## REFERENCES

- Ahmed OI, Soha AE, Tamer MA, Iman ZA. 2014. Detection of bla SHV and bla CTX-M genes in ESBL producing *Klebsiella pneumoniae* isolated from Egyptian patients with suspected nosocomial infections. *Egypt J Med Hum Genet* 14: 277-283. DOI: 10.1016/j.ejmhg.2013.05.002.
- Al-Ammiri HH, Abd-Allah AH, Hamid M. 2016. Isolation and identification of aerobic bacteria detected from sheep infected with pneumonia. *Adv Environ Biol* 10 (5): 214-219.
- Arief RA, Darmawan RD, Sunandar, Widyastuti MDW, Nugroho E, Jatikusumah A, Putra AAG, Basuno E, Karuniawati A, Suwandono A, Wiliyanto I, Suandy I, Latif H. 2016. The use of antibiotics in laying hens in Central Java, Indonesia. *Konferensi Ilmiah Vet Nasional* 14 (1): 22-25. [Indonesian]
- Arya LK, Kumar M, Priya P, Saurabh K, Kumari N. 2020. Isolation and identification of *Klebsiella pneumoniae* from a milk sample. *Indian Vet J* 97 (1): 15-17.
- Brahmachari SK, Misri J, Vijayakumar K, George VI, Chakraborty P, Bhalla S. 2013. Report of the committee on antibiotic use and resistance in food animals. The Public Health Foundation of India, New Delhi, India.
- Brower CH, Mandal S, Hayer S, Sran M, Zehra A, Patel SJ, Kaur R, Chatterjee L, Mishra S, Das BR, Singh P, Singh R, Gill JPS, Laxminarayan. 2017. The prevalence of extended-spectrum beta-lactamase-producing multidrug-resistant *Escherichia coli* in poultry chickens and variation according to farming practices in Punjab, India. *Environ Health Perspect* 125 (7): 077015. DOI: 10.1289/EHP292.
- CDDEP [Center for Disease Dynamics, Economics & Policy]. 2015. State of the world's antibiotics, 2015. CDDEP, Washington, DC.
- CLSI [Clinical and Laboratory Standards Institute]. 2017. Performance standards for antimicrobial susceptibility testing. 27th eds. CLSI supplement M100. Clinical and Laboratory Standards Institute, Wayne, PA, USA.
- Conan A, Goutard FL, Sorn S, Vong S. 2012. Biosecurity measures for backyard poultry in developing countries: a systematic review. *BMC Vet Res* 8: 240. DOI: 10.1186/1746-6148-8-240.
- Davis GS, Price LB. 2016. Recent research examining links among *Klebsiella pneumoniae* from food, food animals, and human extraintestinal infections. *Curr Environ Health* 3 (2): 128-135.
- Dierikx CM, Van der Goot JA, Smith HE, Kant A, Mevius DJ. 2013. Presence of esbl/ampc -producing *Escherichia coli* in the broiler production pyramid: a descriptive study. *PLoS One* 8 (11): e79005. DOI: 10.1371/journal.pone.0079005.
- ECDC/EFSA/EMA. 2017. ECDC/EFSA/EMA second joint report on the integrated analysis of the consumption of antimicrobial agents and occurrence of antimicrobial resistance in bacteria from humans and food-producing animals. *EFSA J* 15: 7.
- Effendi MH, Bintari IG, Aksono EB, Hermawan IP. 2018. Detection of bla<sub>TEM</sub> gene of *Klebsiella pneumoniae* isolated from swab of food-producing animals in East Java. *Trop Anim Sci J* 41 (3): 174-178.
- Effendi MH, Harijani N, Budiarto, Triningtya NP, Tyasningsih W, Plumeriastuti H. 2019. Prevalence of pathogenic *Escherichia coli* isolated from subclinical mastitis in East Java Province, Indonesia. *Indian Vet J* 96 (3): 22-25.
- Effendi MH, Harijani N, Yanestria SM, Hastutie P. 2018. Identification of Shiga toxin-producing *Escherichia coli* in raw milk samples from dairy cows in Surabaya, Indonesia. *Philippine J Vet Med* 55: 109-114.
- El-Mansi M, Anderson KJ, Inche CA, Knowles LK, Platt DJ. 2000. Isolation and curing of the *Klebsiella pneumoniae* large indigenous plasmid using sodium dodecyl sulphate. *Res Microbiol* 151: 201-208.
- Exner M, Bhattacharya S, Christiansen B, Gebel J, Goroncy-Bermes P, Hartemann P, Heeg P, Ilschner C, Kramer A, Larson E, Merckens W, Mielke M, Oltmanns, Ross B, Rotter M, Schmuthausen RM, Sonntag H, Trautmann M. 2017. Antibiotic resistance: what is so special about multidrug-resistant gram-negative bacteria? *GMS Hyg Infect Control* 12: 5. DOI: 10.3205/dgkh000290.
- Fard B. 2004. The effect of colistin sulfate in feed on the controlling of *Salmonella enteritidis* contamination in a broiler farm. *Arch Razi Inst* 58 (1): 105-111.
- Fielding BC, Mnabisa A, Gouws PA, Morris T. 2012. Antimicrobial-resistant *Klebsiella* species isolated from free-range chicken samples in an informal settlement. *Arch Med Sci* 8 (1): 39-42.
- Food and Agriculture Organization. 2008. Poultry production and the environment a review. Animal Production and Health Division, Food and Agriculture Organization of the United Nations, Rome.
- Ganguly NK, Arora NK, Chandy SJ, Fairuze MN, Gill JP, Gupta U, Hossain S, Joglekar S, Joshi PC, Kakkar M, Kotwani A, Rattan A, Sudarshan, Thomas K, Watal C, Easton A, Laxminarayan R. 2011. Rationalizing antibiotic use to limit antibiotic resistance in India. *Indian J Med Res* 134 (3): 281-294.
- Geta K, Kebede A, Chemedissa M. 2019. Antibiotic susceptibility test of bacteria isolated from fruit juices sold in cafes and restaurants of Debre-Markos Town, North Western Ethiopia. *World News Nat Sci* 24: 365-371.
- Guardabassi L, Schwarz S, Lloyd DH. 2004. Pet animals as reservoirs of antimicrobial-resistant bacteria. *J Antimicrob Chemother* 54 (2): 321-332. DOI: 10.1093/jac/dkh332.
- Hayati M, Indrawati A, Mayasari NLOI, Istiyaniingsih I, Atikah N. 2019. Molecular detection of extended-spectrum  $\beta$ -lactamase-producing *Klebsiella pneumoniae* isolates of chicken origin from East Java, Indonesia. *Vet World* 12 (4): 578.
- Kar D, Bandyopadhyay S, Bhattacharyya D, Samanta I, Mahanti A, Nanda PK, Mondal B, Dandapat P, Das AK, Dutta TK, Bandyopadhyay S, Singh RK. 2015. Molecular and phylogenetic characterization of multidrug-resistant extended-spectrum beta-lactamase-producing *Escherichia coli* isolated from poultry and cattle in Odisha, India. *Infect Genet Evol* 29: 82-90.
- Karanika S, Karantanos T, Arvanitis M, Grigoras C, Mylonakis E. 2016. Fecal colonization with extended-spectrum beta-lactamase-producing Enterobacteriaceae and risk factors among healthy individuals: a

- systematic review and meta-analysis. *Clin Infect Dis* 63: 310-318. DOI: 10.1093/cid/ciw283.
- Kempf I, Jouy E, Granier SA, Chauvin C, Sanders P, Salvat G. 2015. Impact of antibiotic use in the swine industry by Mary D. Barton. *Curr Opin Microbiol* 19: 137-138.
- Laube H, Friese A, Salviati CV, Guerra B, Käsbohrer A, Kreienbrock L, Roesler U. 2013. Longitudinal monitoring of extended-spectrum-beta-lactamase/AmpC- producing *Escherichia coli* at German broiler chicken fattening farms. *Appl Environ Microbiol* 79: 4815-4820.
- Levy S. 2014. Reduced antibiotic use in livestock: How Denmark tackled resistance. *Environ Health Perspect* 122 (6): 160-165.
- Lynch JP, Clark NM, Zhanel GG. 2013. Evolution of antimicrobial resistance among Enterobacteriaceae (focus on extended-spectrum  $\beta$ -lactamases and carbapenemases). *Expert Opin Pharmacother* 14: 199-210. DOI: 10.1517/14656566.2013.763030.
- Masruroh CA, Sudarwanto MB, Latif H. 2016. The Occurrence of extended-spectrum B-Lactamase-producing *Escherichia coli* from broiler feces in Bogor. *JSV* 34: 42-49.
- McEwen SA, FedorkaCray PJ. 2002. Antimicrobial use and resistance in animals. *Clin Infect Dis* 34 Suppl 3: 93-106.
- Nahar A, Siddiquee M, Nahar S, Anwar KS, Ali SI, Islam S. 2014. Multidrug-resistant *Proteus mirabilis* isolated from chicken droppings in commercial poultry farms: Bio-security concern and emerging public health threat in Bangladesh. *J Biosafety Health Educ* 2: 2. DOI: 10.4172/2332-0893.1000120.
- Navon-Venezia S, Kondratyeva K, Carattoli. 2017. *Klebsiella pneumoniae*: a major worldwide source and shuttle for antibiotic resistance. *FEMS Microbiol Rev* 41 (3): 252-275.
- Okonko IO, Soleye FA, Amusan TA, Ogun AA, Ogunnusi TA, Ejembi J. 2009. Incidence of multi-drug resistance (MDR) organisms in Abeokuta, Southwestern Nigeria. *Glob J Pharmacol* 3: 69-80.
- Pitout JD, Laupland KB. 2008. Extended-spectrum beta-lactamase-producing Enterobacteriaceae: an emerging public-health concern. *Lancet Infect Dis* 8 (3): 159-166. DOI: 10.1016/S1473-3099(08)70041-0.
- Pomba C, Rantala M, Greko C, Baptiste KE, Catry B, van Duijkeren E. 2017. Public health risk of antimicrobial resistance transfer from companion animals. *J Antimicrob Chemother* 72: 957-968. DOI: 10.1093/jac/dkw481.
- Putra AR, Effendi MH, Koesdarto S, Suwarno S, Tyasningsih W, Estoe pangesti A.T. 2020. Detection of the extended-spectrum  $\beta$ -lactamase produced by *Escherichia coli* from dairy cows by using the Vitek-2 method in Tulungagung regency, Indonesia. *Iraqi J Vet Sci* 34 (1): 203-207.
- Putra ARS, Effendi MH, Koesdarto S, Tyasningsih W. 2019. Molecular identification of Extended-Spectrum Beta-Lactamase (ESBL) producing *Escherichia coli* isolated from dairy cows in East Java Province, Indonesia. *Indian Vet J* 96 (10): 26-30.
- Rahmahani J, Salamah, Mufasirin, Tyasningsih W, Effendi MH. 2020. Antimicrobial resistance profile of *Escherichia coli* from cloacal swab of domestic chicken in Surabaya traditional market. *Biochem Cell Arch* 20 (1): 2993-2997.
- Rashed N, Aftab U, Azizul H, Saurab KM, Mrityunjoy A, Majibur R. 2013. Microbiological study of vendor and packed fruit juices locally available in Dhaka city, Bangladesh. *Intl Food Res J* 20 (2): 1011-1015.
- Riwu KHP, Effendi MH, Rantam FA. 2020. A review of extended-spectrum  $\beta$ -Lactamase (ESBL) producing *Klebsiella pneumoniae* and Multidrug-Resistant (MDR) on companion animals. *Syst Rev Pharm* 11 (7): 270-277.
- Stock I, Wiedemann B. 2001. Natural antibiotic susceptibility of *Klebsiella pneumoniae*, *K. oxytoca*, *K. planticola*, *K. ornithinolytica* and *K. terrigena* strains. *J Med Microbiol* 50 (5): 396-406.
- Struve C, Bojer M, Krogfelt KA. 2009. Identification of a conserved chromosomal region encoding *Klebsiella pneumoniae* type 1 and type 3 fimbriae and assessment of the role of fimbriae in pathogenicity. *Infect Immun* 77 (11): 5016-5024.
- Thyagarajan D, Barathi M, Sakthivadivu R. 2014. Risk mitigation of poultry industry pollutants and waste for environmental safety. *Glob J Sci Front Res Agric Vet* 14 (1): 1-10.
- Vasilakopoulou A, Karakosta P, Vourli S, Tarpatzi A, Varda P, Kostoula M, Antoniadou A, Pournaras S. 2020. Gastrointestinal carriage of vancomycin-resistant Enterococci and Carbapenem-resistant gram-negative bacteria in an endemic setting: prevalence, risk factors, and outcomes. *Front Public Health* 8: 55. DOI: 10.3389/fpubh.2020.00055.
- Watts JL. 2013. Performance standards for antimicrobial disk and dilution susceptibility tests for bacteria isolated from animals: Approved Standard. Clinical and Laboratory Standards Institute.
- Wibisono FJ, Sumiarto B, Untari T, Effendi MH, Permatasari DA, Witaningrum AM. 2020. Resistance Profile of Extended Spectrum Beta Lactamase-Producing *Escherichia coli* Bacteria using Vitek® 2 Compact Method. *Buletin Peternakan* 44 (2): 48-53. [Indonesian]
- Wibisono FJ, Sumiarto B, Untari T, Effendi MH, Permatasari DA, Witaningrum AM. 2020. The presence of extended-spectrum beta-lactamase (ESBL) producing *Escherichia coli* on layer chicken farms in Blitar Area, Indonesia. *Biodiversitas* 21 (6): 2667-2671.
- Wibisono FJ, Sumiarto B, Untari T, Effendi MH, Permatasari DA, Witaningrum AM. 2020. CTX gene of Extended-Spectrum Beta-Lactamase (ESBL) producing *Escherichia coli* on broilers in Blitar, Indonesia. *Syst Rev Pharm* 11 (7): 396-403.
- Widodo A, Effendi H., Khairullah AR. 2020. Extended-spectrum beta-lactamase (ESBL)-producing *Escherichia coli* from livestock. *Syst Rev Pharm* 11 (7): 382-392.
- Wu F, Ying Y, Yin M, Jiang Y, Wu C, Qian C, Chen Q, Shen K, Cheng C, Zu L, Li K, Xu T, Bao Q, Lu J. 2019. Molecular characterization of a multidrug-resistant *Klebsiella pneumoniae* strain R46 isolated from a rabbit. *Intl J Genom* 2019: 5459190. DOI: 10.1155/2019/5459190