

# Short Communication: Pattern of antibiotic resistance on extended-spectrum beta-lactamases genes producing *Escherichia coli* on laying hens in Blitar, Indonesia

*by* Freshinta Jellia Wibisono

---

**Submission date:** 29-Mar-2023 03:28PM (UTC+0700)

**Submission ID:** 2049827459

**File name:** 6\_Short\_Communication\_Pattern\_of\_antibiotic\_resistance.pdf (404.05K)

**Word count:** 4284

**Character count:** 23963

## Short Communication:

# Pattern of antibiotic resistance on extended-spectrum beta-lactamases genes producing *Escherichia coli* on laying hens in Blitar, Indonesia

FRESHINTA JELLIA WIBISONO<sup>1</sup>, BAMBANG SUMIARTO<sup>2</sup>, TRI UNTARI<sup>3</sup>,

MUSTOFA HELMI EFFENDI<sup>3,5\*</sup>, DIAN AYU PERMATASARI<sup>5</sup>, ADIANA MUTAMSARI WITANINGRUM<sup>5</sup>

<sup>1</sup>Doctoral Program in Veterinary Science, Faculty of Veterinary Medicine, Universitas Gadjah Mada. Jl. Fauna No. 2, Karangmalang, Yogyakarta 55281, Indonesia

<sup>2</sup>Department of Veterinary Public Health, Faculty of Veterinary Medicine, Universitas Gadjah Mada. Jl. Fauna No. 2, Karangmalang, Yogyakarta 55281, Indonesia

<sup>3</sup>Department of Microbiology, Faculty of Veterinary Medicine, Universitas Gadjah Mada. Jl. Fauna No. 2, Karangmalang, Sleman 55281, Yogyakarta, Indonesia

<sup>4</sup>Halal Research Center, Universitas Airlangga. Jl. Raya Mulyorejo, Surabaya 60115, East Java, Indonesia. Tel./fax.: +62-31-5915551,

\*email: mheffendi@yahoo.com

<sup>5</sup>Department of Veterinary Public Health, Faculty of Veterinary Medicine, Universitas Airlangga. Jl. Raya Mulyorejo, Surabaya 60115, East Java, Indonesia

Manuscript received: 24 July 2020. Revision accepted: 14 September 2020.

**Abstract.** Wibisono FJ, Sumiarto B, Untari T, Effendi MH, Permatasari DA, Witaningrum AM. 2020. Short Communication: Pattern of antibiotic resistance on extended-spectrum beta-lactamases genes producing *Escherichia coli* on laying hens in Blitar, Indonesia. *Biodiversitas* 21: 4631-4635. The aims of this study were to determine the susceptibility pattern of phenotypic antibiotics on extended-spectrum beta-lactamases (ESBL) genes and genotype profiles of ESBL producing *Escherichia coli* strains isolated from cloacal samples of laying hens in Blitar. A total of 165 cloacal swab samples were successfully isolated 145 *E. coli* strains during the study taken from 5 subdistricts in Blitar. All the strains were examined for antibiotic resistance patterns by disk diffusion method with double-disk synergy test (DDST), followed testing with VITEK<sup>®</sup> 2 methods, molecular identification of ESBL coding genes using PCR. The results of this study showed that the characterization of nucleotide analysis from PCR amplification of ESBL-producing *E. coli* bacteria isolated from laying hens in Blitar showed that eight isolates were the dominant of CTX gene, followed by the TEM encoding gene of two isolates, and the SHV coding gene as much as one isolate. The presence of more than 1 encoding genes in the *E. coli* bacterial isolate was seen in 1 isolate, where the isolate carried the CTX gene and the SHV gene as well. All ESBL producing *E. coli* isolates were resistant to amoxicillin, ampicillin, cefazolin, cefotaxime, and ceftriaxone, and these ESBL isolates were more than 70% resistant to gentamicin, aztreonam, and trimethoprim/sulfamethoxazole. These results indicated that poultry is a potential reservoir for ESBL-producing *E. coli*. The presence of ESBL-producing *E. coli* in poultry requires strengthening antibiotic policy. This is important because the regulation of antibiotic use in poultry is gaining momentum to increase animal productivity and food safety in Blitar, Indonesia.

**Keywords:** Antimicrobial resistance, ESBL genes, *Escherichia coli*, food safety

## INTRODUCTION

The use of antibiotics in animal husbandry provides benefits for animals and farmer, but can pose a risk of antibiotic resistance (Suardana et al. 2014). The use of antibiotics without clear indications has caused many bacteria to become resistant (Kurniawati et al. 2015). In developing countries, including in Indonesia, very little data on the prevalence of antibiotic resistance is found. Development of an effective surveillance system needs to be done, to monitor the emergence of antibiotic resistance (Kurniawati et al. 2015). The use of antibiotics in animals can promote development of antibiotic resistance, one of which is *Escherichia coli* which produces extended-spectrum beta-lactamases (ESBL) enzyme (Hammerum et al. 2014).

Extended-spectrum beta-lactamases is an enzyme that causes resistance to a wider spectrum, third-generation

cephalosporins, and monobactams but does not affect cephamycin or carbapenem that cause resistance so that antibiotics become ineffective (Paterson and Bonomo 2005). Continuous exposure of large amounts of beta-lactam antibiotics induces the production and mutation of the beta-lactamase enzyme. ESBL is derived from the mutated beta-lactamase enzyme. This mutation causes an increase in the enzymatic activity of beta-lactamase, therefore this enzyme can hydrolyze third-generation cephalosporins and aztreonam (Lim et al. 2013; Kang et al. 2017). ESBL-producing bacteria can also be resistant to antibiotics from aminoglycoside, fluoroquinolone, tetracycline, chloramphenicol, and sulfamethoxazole-trimethoprim (Brower et al. 2017; Sudarwanto et al. 2017).

Extended-spectrum beta-lactamases is present mutated genes often found, namely the type of cefotaximase (CTX-M), TEM, and variable sulhydryl (SHV). The CTX-M, TEM, and SHV genes in

ESBL-producing *E. coli* are genes that encode and produce enzymes that can hydrolyze beta-lactam rings from beta-lactam antibiotics and third-generation cephalosporins. The diagnosis with molecular detection is a test for the beta-lactam ring from beta-lactam class of antibiotics and cephalosporins (Buitafasari 2018). Genotypic confirmatory to see the existence of ESBL encoding genes in *E. coli* bacteria can be carried out by using PCR (Bradford 2001; Putra 2019). The highest prevalence of ESBL-producing bacteria with CTX-M, TEM, and SHV is the most common type of ESBL in poultry (Saliu et al. 2017). Previous research conducted by Brower (2017) found that ESBL producing *E. coli* in India was about 42% in laying hens.

This study was expected to provide a genetic picture of ESBL producing *E. coli*. Data on the existence of reports based on the encoding genes of ESBL producing *E. coli* is clear evidence for monitoring antibiotic use in commercial chicken farms.

## MATERIALS AND METHODS

17

### Isolation and identification of *Escherichia coli*

Isolation and identification of *E. coli* were carried out with reference to Effendi et al. (2019). The total samples used in the study were 165 cloacal swabs from 5 subdistricts in Blitar Regency. Cloacal swab samples were stored in the Amies Swab Viscosa (deltalab, Spain) transported to the laboratory in cold temperatures conditions for the isolation of *E. coli* bacteria (Seni et al. 2016). Isolation of *E. coli* bacteria using selective media MacConkey Agar no. 3 CM0115 (Oxoid, England) and differential media Eosin Methylene Blue Agar CM0069 (Oxoid, England), incubated at 35-37°C for 20-24 hours. Pure *E. coli* colonies were identified by biochemical testing of IMVIC (Indol-Motility, Methyl Red, Voges Proskauer, Citrate) and TSIA (Triple Sugar Iron Agar) (Effendi et al. 2019).

### ESBL confirmation and antibiotic susceptibility testing

Double disc synergy test (DDST) method was used to evaluate the presence of inhibitory zones of ESBL activity with clavulanic acid using the Kirby-Bauer disk diffusion method on Mueller-Hinton agar (Merck, Germany). The antibiotic discs of amoxicillin-clavulanic 30µg (Oxoid, England), cefotaxime 30µg (Oxoid, England), ceftazidime 30µg (Becton Dickinson, USA), and aztreonam 30µg (Oxoid, England) were used in this method. Culture was incubated at 35-37°C for 18-24 hours (Putra et al. 2020; CLSI 2017). The inhibition zone that appeared on the cup after incubation was measured based on CLSI guidelines showing inhibition zone  $\leq 27$  mm in cefotaxime, inhibition zone  $\leq 22$  mm in ceftazidime, inhibition zone  $\leq 27$  mm in aztreonam, and there was a synergy between cefotaxime/ceftazidime with a combination of  $\leq 22$  mm in ceftazidime, inhibition zone  $\leq 27$  mm in aztreonam, and there was a synergy between cefotaxime/ceftazidime with amoxicillin-clavulanic in the form of synergy expansion of the inhibition zone between the two disks and there is an increase in the inhibition zone  $\geq 5$  mm between the

diameter of the cephalosporin disk and the cephalosporin-clavulanate disk assert that the *E. coli* bacteria is positive ESBL (CLSI 2017).

The antibiotic sensitivity test of ESBL-producing *E. coli* bacteria by the DDST method was then confirmed by the VITEK<sup>®</sup> 2 method. The bacterial suspension was homogenized and bacterial turbidity of 0.50 to 0.63 McFarland was made using VITEK<sup>®</sup> 2 DensiCHEK. Antimicrobial susceptibility and phenotypic detection of ESBL generators were used AST N280 cards (bioMérieux, Marcy-L'Étoile, France). Results were analyzed automatically by the system and interpreted as sensitive, intermediate, and resistant (Brower et al. 2017; Biomerieux 2017; Putra et al. 2020).

12

### Characterization of CTX, TEM, and SHV genes by Polymerase Chain Reaction (PCR)

The Extended spectrum beta-lactamase-producing *E. coli* bacteria which has been phenotypically confirmed by DDST and VITEK<sup>®</sup> 2 compact methods were then genotypically confirmed by further analyzing the presence of ESBL genes CTX subtypes, TEM, and SHV using molecular identification of PCR. Bacterial DNA was isolated with the QIAamp<sup>®</sup> DN mini kit (QIAGEN, Germany). *E. coli* ATCC 35218 was used as a positive control standard for strains of ESBL-producing bacteria and *E. coli* ATCC 25922 was used as a negative control or non-ESBL-producing bacteria. The PCR results were visualized by electrophoresis using 2% agarose gel (Invitrogen, USA). The primers used to encode CTX encoding gene refer to Ali et al. (2016), and the primers used to encode the TEM and SHV coding genes refer to Kurekci et al. (2017), as shown in Table 1.

### Ethical clearance

Cloacal swabs were used in this study, hence ethical clearance was not necessary. Cloacal swab samples were collected from laying hens farms in Blitar, East Java province, Indonesia.

## RESULTS AND DISCUSSION

### Results

The results of isolation and identification of laying cloacal swab samples from a total of 165 samples revealed that 87.9% were identified as presumptive *Escherichia coli* on MacConkey agar media. In order to be identified with *E. coli* colonies, they had a small round shape and semi-mucoid reddish-pink colonies whereas, on Eosin Methylene blue to metallic green colony. The bacterial culture was then confirmed by biochemical tests using IMVIC and TSIA.

The results of the ESBL-producing *E. coli* confirmation on laying hens cloacal swabs with the double-disc synergy test (DDST) method showed 10 (6.89%) positive ESBL isolates. The results were then confirmed by the automatic VITEK<sup>®</sup> 2 compact method which showed 100% *E. coli* results (Table 2). Cefotaxime synergy with the combination of amoxicillin-clavulanate in the form of an expansion of

the inhibition zone between the two disks showed that ESBL is positive. This result is in accordance with Savira (2014). Positive results on ESBL-producing bacteria confirmed that there was an increase in inhibition zones  $\geq 5$  mm between the diameter of the cephalosporin disk and the cephalosporin-clavulanate disk combination revealed an ESBL positive germ (CLSI 2017).

Molecular identification as shown in Table 3 showed that 8 isolates (8/10, 80%) were isolates of *Escherichia coli* bacteria producing ESBL encoding CTX gene, 2 isolates (2/10, 20%) encoding TEM gene, and 1 isolate (1/10, 10%) encoding the SHV gene. The CTX encoding gene is most commonly found in *E. coli*. CTX type enzymes have hydrophilic ability against cephalosporins, especially cefotaxime, so-called CTX (Saliu et al. 2017). Molecular identification showed visualization of CTX, TEM, and SHV gene fragment bands (Figures 1 and 2). Positive results on the CTX gene showed electrophoresis results of samples describing the same fragments as positive controls with a gene length of 550 bp, as shown on Figure 1. The positive results of the TEM gene on ESBL showed the results of electrophoresis samples illustrating the same fragments as positive controls with a gene length of 1086 bp. The positive results of the SHV gene on ESBL showed the results of electrophoresis samples illustrating the same fragments as positive controls with a gene length of 927 bp (Ali et al. 2016; Kurekci et al. 2017), as shown on Figure 2.

The results of the sensitivity test were in line with the sensitivity test on broiler chickens in the Bogor slaughterhouse of 93.7% (ampicillin), 75% (streptomycin), and 68.75% (erythromycin) (Masruroh et al. 202016). A large number of antibiotics used in laying hens are also used for human therapy, resulting in a selection of pathogenic bacteria that are resistant to several drugs. Sensitivity tests were carried out on all bacterial isolates obtained from bacterial culture.

Figures 1 and 2 showed the spread of ESBL-producing *E. coli* occurring in 3 sub-districts from 5 sub-districts of the sampling area. Srengat subdistrict has 6 isolates, Talun subdistrict has 1 isolate, and Kademangan subdistrict there are 3 isolates of ESBL-producing *E. coli* isolates, while Ponggok subdistrict and Udanawu subdistrict are not found any *E. coli* producing ESBL.

**Table 2.** Extended-spectrum beta-lactamases (ESBL) producing *Escherichia coli* in Blitar, Indonesia

Location	Sample size	<i>Escherichia coli</i>	ESBL Confirmation	
			DDST	VITEK® 2
Ponggok	40	31	-	-
Srengat	45	43	6	6
Udanawu	35	30	-	-
Talun	20	18	1	1
Kademangan	25	23	3	3
Total	165	145	10	10

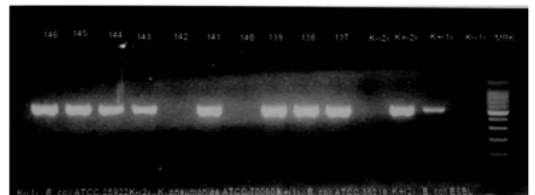
**Table 3.** Phenotypic and genotypic profiles of ESBL-producing *Escherichia coli* isolates

Sample code	ESBL genes	Antibiotic resistance by Vitek-2
137	CTX	AM/ AMP/ KZ/ CTX/ CRO/ ATM/ GM/ CIP
138	CTX	AM/AMP/KZ/ CTX/ CRO/ ATM/ GM/ CIP / SXT
139	CTX	AM/AMP/KZ/CTX/CRO/ATM/ GM/ CIP/ SXT
140	TEM	AM/ AMP/ KZ/ CTX/ CRO/ ATM/ GM/ CIP
141	CTX, SHV	AM/AMP/KZ/CTX/CRO/ ATM/ GM/ CIP/ SXT
142	TEM	AM/ AMP/ KZ/ CTX/ CRO/ GM/ CIP
143	CTX	AM/AMP/SAM/KZ/CTX/CAZ/CRO/ATM/SXT
144	CTX	AM/ AMP/ KZ/ CTX/ CRO/ ATM/ GM/ SXT
145	CTX	AM/ AMP/ KZ/ CTX/ CRO/ ATM/ GM/ SXT
146	CTX	AM/ AMP/ KZ/ CTX/ CRO/ GM/ SXT

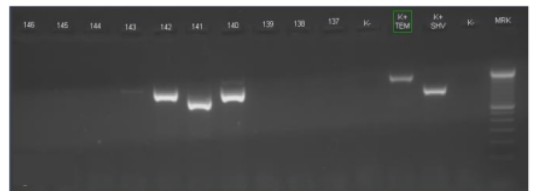
Note: AM: Amoxicillin, AMP: Ampicillin, SAM: Ampicillin/sulbactam, TZP: Piperacillin/Tazobactam, KZ: Cefazolin, CTX: Cefotaxime, CAZ: Ceftazidime, CRO: Ceftriaxone, FEP: Cefepime, ATM: Aztreonam, ERT: Ertapenem, MEM: meropenem, AK: Amikacin, GM: Gentamicin, CIP: Ciprofloxacin, TC: Tigecycline, NFT: Nitrofurantoin, SXT: Trimethoprim/ sulfamethozale

**Table 1.** Nucleotide sequence of the primers used in PCR

Targets	Sequence (amplicon sizes)	Annealing temperature	Reference
CTX gene	F: CGC TTT GCG ATG TGC AG R: ACC GCG ATA TCG TTG GT (Amplicon 550-bp)	54°C	Ali et al. 2016
TEM gene	F: ATAAAAATTCTTG AAGACGAAA R: GACAGTTACCAATGCTTAATC (Amplicon: 1080 bp)	59°C	Kurekci et al. 2017
SHV gene	F: CGGCCTTCACTCAAGGATGTA R: GTGCTGCGGGCCGGATAAC (Amplicon: 927 bp)	59°C	Kurekci et al. 2017



**Figure 1.** Molecular identification of CTX gene by PCR (PCR product = 550 bp). Note: 137-146 samples code; K-: negative control; K+: positive control for CTX gene; MRK: marker



**Figure 2.** Molecular identification of TEM, and SHV genes by PCR (PCR product for TEM gene = 1080 bp and PCR product for SHV gene = 927 bp). Note: 137-146 samples code; K-: negative control; K+ TEM: positive control for TEM gene; K+ SHV: positive control for SHV gene; MRK: marker

## Discussion

The prevalence of *E. coli* producing ESBL in cloacal swabs in laying hens is in accordance with the prevalence of *E. coli* in livestock in slaughterhouses in Bogor by 8.6% (Sudarwanto et al. 2016), but much smaller compared to the incidence of ESBL producing *E. coli* from animal feces of broiler chickens in Bogor by 25% (Masruroh et al. 2016) and the prevalence of ESBL producing *E. coli* in India in laying hens by 42% (Brower et al. 2017).

Extended-spectrum beta-lactamases-producing *E. coli* in poultry spread through the food chain. In Indonesia, the desire to optimize poultry farming has led to the use of antibiotics without referring to pharmaceutical standards, which was similar to research in Zambia (Chishimba et al. 2016). The use of many antibiotics has been reported to be a risk factor for the acquisition of ESBL-producing organisms resulting in a trend of increasing resistance to commonly used antibiotics, namely, ampicillin, cotrimoxazole, gentamicin, erythromycin, tetracycline, and third-generation cephalosporins (Reich et al. 2013).

In Blitar, the antimicrobial agents are used for poultry without proper guidance on drug dispensation. Inadequate monitoring of drug stores in Blitar has made it easy for people to access livestock antibiotics without following the advice recommended by veterinarians thereby increasing the risk of ESBL in poultry products. This is also similar to the condition reported on dairy farms in East Java (Putra et al. 2019). The high prevalence observed may be due to the frequent use of uncontrolled antibiotics for animal health which in turn increases the risk of *E. coli*, being more resistant to antimicrobial strains in normal intestinal flora as observed in a study conducted by Carattoli (2008) and also by Wibisono et al. (2020). Detection of ESBL-producing *E. coli* isolates in poultry has not been fully carried out in Indonesia. Cross-sectional study revealed that overall of almost 10% of ESBL-producing *E. coli* isolates was detected on dogs (Kristianingtyas et al. 2020).

To detect the presence of *E. coli* the cloacal swabs method was used in the present study. Furthermore, high colonization can be associated with cross-contamination of poultry farms potentially causing risk factors that can worsen the transmission rate of ESBL-producing *E. coli*-resistant genes (Lavilla et al. 2008).

The dominant ESBL-producing *E. coli* gene identified in this study was the CTX cluster with 80% which was relatively high in relation to 54.5% of the CTX *E. coli* carriers isolated from poultry in the UK (Randall et al. 2011). In Blitar, the economic situation has caused many residents to grow layer chicken as a business that generates more income. This is what brings humans into close contact with poultry which can be a possible route for releasing environmental ESBL producers. However, there are no detailed studies conducted in Indonesia to specifically explain the types of ESBL-producing *Enterobacteriaceae* associated with chickens and their products. Other studies of poultry products clarify the presence of ESBL gene from *Enterobacteriaceae* (Effendi et al. 2018; Pehlivanoglu et al. 2017). In addition, other researchers also showed that ESBL produced *E. coli* isolates carrying several types of beta-lactamase genes and

that the combination of CTX-was dominant followed by the TEM cluster (Putra et al. 2019).

This study using an antimicrobial susceptibility test with VITEK® 2 compacts in this ESBL isolate revealed an interesting pattern with the level of resistance observed in most of the antimicrobial agents tested. The results on ESBL isolates with 100% antimicrobial susceptibility to amoxicillin, ampicillin, cefazolin, cefotaxime, and ceftriaxone and more than 70% resistant to gentamicin, aztreonam, trimethoprim/sulfamethoxazole were similar the findings of Tutun et al. (2019).

In this study, it was found that isolates ESBL producing *E. coli* have resistance to 2 cephalosporin third-generation class antibiotics. One isolate of ESBL contained two ESBL genes. Therefore, this confirms that the ESBL-mediated plasmid is capable of carrying more than one beta-lactamase gene and thus produces a high level of beta-lactam resistance phenotype as described by Rottier et al. (2012). These results were in accordance with previous studies on dogs identified that *E. coli* strain consisting of CTX as the main ESBL-producing subtype isolated and also carrying more than one beta-lactamase genes (Kristianingtyas et al. 2020).

In conclusion, molecular identification of CTX, TEM, and SHV genes in ESBL-producing *E. coli* in laying hens cloacal swabs in Blitar Regency was dominant in CTX encoding genes of 8 (8/10, 80%), followed by TEM encoding genes of 2 (8) 2/10, 20%), and while the SHV encoding gene is 1 (1/10, 10%). One isolate ESBL producing *E. coli* was found containing two genes encoding ESBL. These results also indicate the presence of ESBL isolates that are 100% resistant to some antibiotics and also the wider distribution on laying hens in Blitar that can threaten animal health and human health.

## ACKNOWLEDGEMENTS

The authors would like to thank the Rector of Airlangga University, Surabaya, Indonesia for providing *Hibah Mandat* research funds with grant numbers; 371/UN3.14/LT/2019, and this article is a part of the research.

## REFERENCES

- Ali T, Rahman S, Zhang L, Shahid M, Zhang S, Liu G, Gao, J and Han, B. 2016. ESBL Producing *Escherichia coli* from cows suffering mastitis in China Contain Clinical Class 1 Integrons with CTX-M Linked to ISCR1. *Front Cell Infect Microbiol* 7: 1931. DOI: 10.3389/fmicb.2016.01931.
- BioMérieux. 2017. AST and resistance detection, antibiotic susceptibility testing bioMérieux Industry. bioMérieux SA, France.
- Biutifasan V. 2018. Extended spectrum beta-lactamase (ESBL). *Ocean Biomed J* 1: 1-6.
- Bradford P. 2001. Extended spectrum beta-lactamase in the 21 century: characterization, epidemiology, and detection of this important resistant threat. *Clin Microbiol Rev* 14: 933-951.
- Brower CH, Mandal S, Hayer S, Sran M, Zehra A, Patel SJ, Kaur R, Chatterjee L, Mishra S, Das BR, Singh P, Singh R, Gill JPS, Laxminarayan R. 2017. The prevalence of Extended-spectrum beta-lactamases-producing multidrug-resistant *Escherichia coli* in poultry chickens and variation according to farming practices in Punjab.

- India. *Environ Health Perspect* 125: 1-10. DOI: 10.1089/mdr.2018.0431.
- Carattoli A. 2008. Animal reservoirs for Extended-spectrum beta-lactamases producers. *Clin Microbiol Infect* 14: 1: 117-123.
- Chishimba K, Hang'ombe BM, Muzandu K, Mshana SE, Matee MI, Nakajima C, Suzuki Y. 2016. Detection of extended-spectrum beta-lactamases-producing *Escherichia coli* in market-ready chickens in Zambia. *Intl J Microbiol* 2016: 5275724. DOI: 10.1155/2016/5275724.
- CLSI. 2017. M100 Performance Standards for Antimicrobial. 27th ed. Clinical and Laboratory Standards Institute, USA.
- Effendi MH, Bintari IG, Aksoro EB, Hermawan IP. 2018. Detection of blaTEM gene of *Klebsiella pneumoniae* isolated from swab of food-producing animals in East Java. *Trop Anim Sci J* 41: 174-178.
- Effendi MH, Harijani N, Budiarto, Triningtya NP, Tyasningsih W, Plumeriastuti H. 2019. Prevalence of pathogenic *Escherichia coli* isolated from subclinical mastitis in East Java Province, Indonesia. *Indian Vet J* 96 (3): 22-25.
- Hammerum AM, Larsen J, Andersen VD, Lesterm CH, Timmy S, Skytte S, Hansen F, Olsen SS, Mordhorst H, Skov RL, Aarestrup FM, Agerso Y. 2014. Characterization of Extended-spectrum beta-lactamases (ESBL)-producing *Escherichia coli* obtained from Danish pigs, pig farmers and their families from farms with high or no consumption of third- or fourth-generation cephalosporins. *J Antimicrob Chemother* 69: 2650-2657.
- Kang D, Sinuraya RK, Rostinawati T, Abdulah R. 2017. Gene blaCTX-M mutation as risk factor of antibiotic resistance. *J Farmasi Klinik Indonesia* 6: 135-152.
- Kristianingtyas L, Effendi MH, Tyasningsih W, Kurniawan F. 2020. Genetic identification of blaCTX-M gene and blaTEM gene on extended-spectrum beta-lactamases (ESBL) producing *Escherichia coli* from Dogs. *Indian Vet J* 97 (1): 17-21.
- Kürekci C, Aydın M, Şapeli M, Katouli M, Gündoğdu A. 2017. Characterization of extended-spectrum beta-lactamase (ESBL)-producing *Escherichia coli* in Asi (Orontes) River in Turkey. *J Water Health* 15: 7: 25-38.
- Kumiawati AF, Satyabakti P, Arbianti N. 2015. Differences in risk of multidrug resistance organisms (MDROS) according to risk, compliance and hygiene factors. *J Berk Epidemiol* 3: 277-289.
- Lavilla S, Gonzalez-Lopez JJ, Miro E, Dominguez A, Llagostera M, Bartolome R M, Mirelis B, Navarro F, Prats G. 2008. Dissemination of extended-spectrum beta-lactamases-producing bacteria: the foodborne outbreak lesson. *J Antimicrob Chemother* 61: 6: 1244-1251.
- Lim CLL, Lee W, Lee ALC, Liew LTT, Nah SC, Wan CN, Chlebicki MJP, Kwa ALH. 2013. Evaluation of ertapenem use with impact assessment on Extended-spectrum beta-lactamases (ESBL) production and gram-negative resistance in Singapore general hospital (SGH). *BMC Infect Dis* 13: 1523. DOI: 10.1186/1471-2334-13-523.
- Mas CA, Sudarwanto MB, Latif H. 2016. Incidence rate of *Escherichia coli* producing extended-spectrum beta-lactamases isolated from broiler faeces in Bogor City. *J Sains Vet* 34: 42-49.
- Paterson DL, Bonomo RA. 2005. Extended-spectrum beta-lactamases: a Clinical Update. *Clin Microbiol Rev* 18: 657-686.
- Pehlivanoglu F, Turuto H, Ozturk D, Yardimci, H. 2017. Characterization of extended-spectrum beta-lactamases-producing fecal *Escherichia coli* isolates in laying hens. *Ankara Univ Vet Fak Derg* 64: 301-306.
- Putra ARS, Effendi MH, Koedarto S, Tyasningsih W. 2019. Molecular identification of extended-spectrum beta-lactamases (ESBL) producing *Escherichia coli* isolated from dairy cows in East Java Province, Indonesia. *Indian Vet J* 96: 10: 26-30.
- Putra AR, Effendi MH, Koesoema S, Suwarno S, Tyasningsih W, Estoe pangestie AT. 2020. Detection of the extended-spectrum beta-lactamase produced by *Escherichia coli* from dairy cows by using the Vitek-2 method in Tulungagung regency, Indonesia. *Iraqi J Vet Sci* 34 (1): 203-207.
- Randall LP, Clouting C, Horton R, Coldham NG, Wu G, Clifton-Hadley FA, Davies RH, Teale CJ. 2011. Prevalence of *Escherichia coli* carrying extended-spectrum beta-lactamases (CTX-M and TEM-52) from broiler chickens and turkeys in Great Britain between 2006 and 2009. *J Antimicrob Chemother* 66 (1): 86-92.
- Reich F, Atanassova V, Klein G. (2013). Extended-spectrum beta-lactamases- and ampc-producing Enterobacteria in healthy broiler chickens, Germany. *Emerg Infect Dis* 19: 1253-1259.
- Rottier WC, Ammerlaan HSM, Bonten MJM. 2012. Effects of confounders and intermediates on the association of bacteremia caused by extended-spectrum beta-lactamase-producing Enterobacteriaceae and patient outcome: a meta-analysis. *J Antimicrob Chemother* 67 (6): 1311-1320.
- Salu EM, Vahjen W, Zentek J. 2017. Types and prevalence of extended-spectrum beta-lactamases-producing Enterobacteriaceae in poultry. *Anim Heal Res Rev* 18: 46-57.
- Seni J, Falgenhauer L, Simeo N, Mirambo MM, Imirzalioğlu C, Matee M, Rweyemamu M, Trinad Chakraborty T, Mshana SE. 2016. Multiple ESBL-producing *Escherichia coli* sequence types carrying quinolone and aminoglycoside resistance genes circulating in companion and domestic farm animals in Zanzania, Tanzania, harbor commonly occurring plasmids. *Front Microbiol* 7: 142. DOI: 10.3389/fmicb.2016.00142.
- Suardana IW, Utama IH, Putriningsih PAS, Rudyanto MD. 2014. Antibiotic sensitivity test of *Escherichia coli* O157: H7 isolates from chicken feces. *Bul Vet Udayana* 6: 19-27.
- Sudarwanto MB, Lukman DW, Latif H, Pismani H, Sukmawinata E, Akineden Ö, Usleber E. 2016. CTX-M producing *Escherichia coli* isolated from cattle feces in Bogor slaughterhouse, Indonesia. *Asian Pac J Trop Biomed* 6: 605-608.
- Sudarwanto MB, Lukman DW, Purnawarman T, Latif H, Pisestyani H, Sukmawinata E. 2017. Multidrug resistance extended-spectrum beta-lactamases and AmpC producing *Escherichia coli* isolated from the environment of Bogor Slaughterhouse, Indonesia. *Asian Pac J Trop Biomed* 7: 708-711.
- Tutun H, Karagoz A, Altintas L, Kocak N. 2019. Determination of antibiotic susceptibility, ESBL genes, and pulsed-field gel electrophoresis profiles of extended-spectrum beta-lactamase-containing *Escherichia coli* isolates. *Ankara Univ Vet Fak Derg* 66: 407-416.
- Wibisono, F.J. Sumiarto, B. Utami, T, Effendi, M.H, Permatasari, D.A, Witaningrum. A.M. 2020. The presence of extended-spectrum beta-lactamases (ESBL) producing *Escherichia coli* on layer chicken farms in Blitar Area, Indonesia. *Biodiversitas* 21 (6): 2667-2671.

# Short Communication: Pattern of antibiotic resistance on extended-spectrum beta-lactamases genes producing Escherichia coli on laying hens in Blitar, Indonesia

## ORIGINALITY REPORT

19%

SIMILARITY INDEX

8%

INTERNET SOURCES

11%

PUBLICATIONS

9%

STUDENT PAPERS

## PRIMARY SOURCES

- 1 Amira A. Moawad, Helmut Hotzel, Omnia Awad, Herbert Tomaso, Heinrich Neubauer, Hafez M. Hafez, Hosny El-Adawy. "Occurrence of Salmonella enterica and Escherichia coli in raw chicken and beef meat in northern Egypt and dissemination of their antibiotic resistance markers", Gut Pathogens, 2017  
Publication 1%
- 2 Submitted to Virginia Community College System  
Student Paper 1%
- 3 [www.pjbs.org](http://www.pjbs.org)  
Internet Source 1%
- 4 Submitted to University of Wales Swansea  
Student Paper 1%
- 5 Bettiol, Esther, Wouter C Rottier, Maria Dolores del Toro, Stephan Harbarth, Marc J Bonten, and Jesús Rodríguez-Baño. "Improved treatment of multidrug-resistant bacterial 1%

# infections: utility of clinical studies", Future Microbiology, 2014.

Publication

---

6	Submitted to Massey University Student Paper	1 %
7	Submitted to Universitas Bangka Belitung Student Paper	1 %
8	Submitted to University of Global Health Equity Student Paper	1 %
9	repo.unand.ac.id Internet Source	1 %
10	portalrecerca.uab.cat Internet Source	1 %
11	Submitted to University of Abertay Dundee Student Paper	1 %
12	Mitra Hemmati, Siavash Vaziri, Mandana Afsharian, Faizullah Mansouri et al. "Molecular Investigation of Extended-Spectrum $\beta$ -Lactamase and Patterns of Antibiotic Resistance in Enterobacter cloacae Isolates from Teaching Hospitals in Kermanshah, Iran", JOURNAL OF CLINICAL AND DIAGNOSTIC RESEARCH, 2019 Publication	1 %

---



13	Bahman ABDI-HACHESOO, Abdollah DERAKHSHANDEH, Mohammad MOTAMEDIFAR, Negar AZIMZADEH. "Antimicrobial Resistance Profiles and Clonal Relationship among Non-ESBL Avian Pathogenic Escherichia coli Isolates and ESBL Producing E. coli Isolates from Human Urinary Tract Infections", Iranian Journal of Public Health, 2020 Publication	1 %
14	Juan P. Giraldo-Cardona, Daniela Gualdrón-Ramírez, Iliana Chamorro-Tobar, Adriana Pulido-Villamarín et al. "Salmonella spp. prevalence, antimicrobial resistance and risk factor determination in Colombian swine farms", Pesquisa Veterinária Brasileira, 2019 Publication	1 %
15	Submitted to New College Stamford Student Paper	1 %
16	Submitted to Universiti Selangor Student Paper	1 %
17	medcraveonline.com Internet Source	1 %
18	akbis.usak.edu.tr Internet Source	<1 %
19	Submitted to Naresuan University Student Paper	<1 %

20

Yingwei Xu, Ling Ni, Huiqiong Guan, Dailing Chen, Si Qin, Lanming Chen. "First Report of Potentially Pathogenic *Klebsiella pneumoniae* from Serotype K2 in Mollusk *Tegillarca granosa* and Genetic Diversity of *Klebsiella pneumoniae* in 14 Species of Edible Aquatic Animals", *Foods*, 2022

Publication

&lt;1 %

21

[ann-clinmicrob.biomedcentral.com](https://ann-clinmicrob.biomedcentral.com)

Internet Source

&lt;1 %

22

Submitted to University of East London

Student Paper

&lt;1 %

23

[www.biomedcentral.com](https://www.biomedcentral.com)

Internet Source

&lt;1 %

24

Huijbers, Patricia M.C., Elisabeth A.M. Graat, Angela H.A.M. van Hoek, Christiaan Veenman, Mart C.M. de Jong, and Engeline van Duijkeren. "Transmission dynamics of extended-spectrum  $\beta$ -lactamase and AmpC  $\beta$ -lactamase-producing *Escherichia coli* in a broiler flock without antibiotic use", *Preventive Veterinary Medicine*, 2016.

Publication

&lt;1 %

25

Submitted to Napier University

Student Paper

&lt;1 %

26

F. Boyle, D. Morris, J. O'Connor, N. DeLappe, J. Ward, M. Cormican. "First Report of Extended-Spectrum--Lactamase-Producing *Salmonella enterica* Serovar Kentucky Isolated from Poultry in Ireland", *Antimicrobial Agents and Chemotherapy*, 2009

Publication

---

&lt;1 %

27

[brieflands.com](http://brieflands.com)

Internet Source

---

&lt;1 %

28

Zineb Belbel, Rym Lalaoui, Sofiane Bakour, Sabrina Nedjai, Nassima Djahmi, Jean-Marc Rolain. "First report of colistin resistance in an OXA-48- and a CTX-M-15 producing *Klebsiella pneumoniae* clinical isolate in Algeria due to *pmrB* protein modification and *mgrB* inactivation", *Journal of Global Antimicrobial Resistance*, 2018

Publication

---

&lt;1 %

29

[www.nature.com](http://www.nature.com)

Internet Source

---

&lt;1 %

30

Liao, Kang, Yili Chen, Menghe Wang, Penghao Guo, Qiwen Yang, Yuxing Ni, Yunsong Yu, Bijie Hu, Ziyong Sun, Wenxiang Huang, Yong Wang, Anhua Wu, Xianju Feng, Yanping Luo, Zhidong Hu, Yunzhuo Chu, Shulan Chen, Bin Cao, Jianrong Su, Bingdong Gui, Qiong Duan, Shufang Zhang, Haifeng Shao, Haishen Kong,

&lt;1 %

and Yingchun Xu. "Molecular characteristics of extended-spectrum  $\beta$ -lactamase-producing *Escherichia coli* and *Klebsiella pneumoniae* causing intra-abdominal infections from 9 tertiary hospitals in China", *Diagnostic Microbiology and Infectious Disease*, 2016.

Publication

---

31

Nicole Acosta, Jangwoo Lee, Maria A. Bautista, Srijak Bhatnagar et al. "Metagenomic analysis after selective culture enrichment of wastewater demonstrates increased burden of antibiotic resistant genes in hospitals relative to the community", *Cold Spring Harbor Laboratory*, 2023

Publication

---

<1 %

32

[journals.stmjournals.com](https://journals.stmjournals.com)

Internet Source

---

<1 %

33

[pharfac.mans.edu.eg](https://pharfac.mans.edu.eg)

Internet Source

---

<1 %

34

[www.biomerieux-industry.com](https://www.biomerieux-industry.com)

Internet Source

---

<1 %

35

[www.coursehero.com](https://www.coursehero.com)

Internet Source

---

<1 %

36

Fernando Baquero. "In Vitro Susceptibilities of Aerobic and Facultatively Anaerobic Gram-Negative Bacilli Isolated from Patients with Intra-Abdominal Infections Worldwide: 2005

<1 %

Results from Study for Monitoring  
Antimicrobial Resistance Trends (SMART)",  
Surgical Infections, 10/02/2008

Publication

37

Submitted to Kirikkale University

Student Paper

<1 %

38

Luz Chacón, Benno Kuroopka, Enrique González-Tortuero, Frank Schreiber, Keilor Rojas-Jiménez, Alexandro Rodríguez-Rojas. "Mechanisms of low susceptibility to the disinfectant benzalkonium chloride in a multidrug-resistant environmental isolate of ", Cold Spring Harbor Laboratory, 2023

Publication

<1 %

39

Olusegun O. Soge, Anne Marie Queenan, Kayode K. Ojo, Bolanle A. Adeniyi, Marilyn C. Roberts. "CTX-M-15 extended-spectrum  $\beta$ -lactamase from Nigerian Klebsiella pneumoniae", Journal of Antimicrobial Chemotherapy, 2006

Publication

<1 %

40

[is.muni.cz](http://is.muni.cz)

Internet Source

<1 %

41

[microbiologyjournal.org](http://microbiologyjournal.org)

Internet Source

<1 %

42

[www.scribd.com](http://www.scribd.com)

Internet Source

<1 %

43

Brent Hadder, Hetal M. Patel, Randy W. Loftus. "Dynamics of intraoperative Klebsiella , Acinetobacter , Pseudomonas , and Enterobacter transmission", American Journal of Infection Control, 2018

Publication

<1 %

44

Dierikx, C.. "Increased detection of extended spectrum beta-lactamase producing Salmonella enterica and Escherichia coli isolates from poultry", Veterinary Microbiology, 20101026

Publication

<1 %

45

Karl A. Bettelheim. " The Non-O157 Shiga-Toxigenic (Verocytotoxigenic) ; Under-Rated Pathogens ", Critical Reviews in Microbiology, 2008

Publication

<1 %

46

Moshe Wolk, Lea Valinsky, David Sompolinsky, Iancu Sechter, Herbert Schmidt, Shaul Tetry, Vered Agmon. " Endemic occurrence of infections by multidrug-resistant of four unique serotypes in the elderly population of Israel ", FEMS Microbiology Letters, 2004

Publication

<1 %

Exclude bibliography  Off