

CTX Gene of Extended Spectrum Beta-Lactamase (ESBL) Producing Escherichia coli on Broilers in Blitar, Indonesia

by Freshinta Jellia Wibisono

Submission date: 29-Mar-2023 02:00PM (UTC+0700)

Submission ID: 2049795606

File name: 4._CTX_Gene_of_Extended_Spectrum_Beta-Lactamase_ESBL.pdf (1.19M)

Word count: 4639

Character count: 26508

CTX Gene of Extended Spectrum Beta-Lactamase (ESBL) Producing Escherichia coli on Broilers in Blitar, Indonesia

Freshinta Jellia Wibisono¹, Bambang Sumiarto², Tri Untari³, Mustofa Helmi Effendi^{4*}, Dian Ayu Permatasari⁵, Adiana Mutamsari Witaningrum⁵

¹Doctoral Program at Veterinary Science, Faculty of Veterinary Medicine, Gadjah Mada University, Yogyakarta, Indonesia

²Department of Veterinary Public Health, Faculty of Veterinary Medicine, Gadjah Mada University, Yogyakarta, Indonesia

³Department of Microbiology, Faculty of Veterinary Medicine, Gadjah Mada University, Yogyakarta, Indonesia

⁴Halal Research Center, Airlangga University, Surabaya, Indonesia

⁵Department of Veterinary Public Health, Faculty of Veterinary Medicine, Airlangga University, Surabaya, Indonesia

Jl. Mulyorejo, Halal Research Center Unair, Kampus C UNAIR, Surabaya 60115

*Corresponding author Email: mheffendi@yahoo.com

ABSTRACT

Escherichia coli is one of the causes of infection in humans and animals which can easily cause resistance to antibiotics, one of which is resistance caused by ESBL. This study used 160 broilers cloaca swabs from 6 subdistricts in Blitar District. Isolation of Escherichia coli using MacConkey Agar selective media, and identified by biochemical testing of IMVIC and TSIA. Escherichia coli resistance test uses 5 different types of antibiotics, including beta lactam (Ampicillin), aminoglycoside (Streptomycin) group, macrolide group (Erythromycin), tetracycline (Tetracycline) group, and sulfonamide group (Sulfamethoxazole-Trimethoprim). ESBL-producing Escherichia coli bacteria were confirmed by the Double Disc Synergy Test (DDST) method. CTX gene characterization using the PCR method. The results showed that 45 isolates (97.8%) were Escherichia coli isolates producing ESBL CTX encoding gene found in broiler cloaca swabs in Blitar district. Positive results on the CTX gene showed electrophoretic results of the samples depicting the same fragment as positive control with a gene length of 550 bp. Escherichia coli which has MDR resistance properties in broiler chickens in Blitar District there were 137 isolates from a total of 160 Escherichia coli. The incidence rate of ESBL-producing Escherichia coli in cloaca swabs in broiler chickens with the Double Disc Synergy Test (DDST) method in the results of this study showed 46 (28.75%) positive isolates of ESBL. These results indicate that the spread of ESBL-producing Escherichia coli is high, therefore it can cause spreading antimicrobial resistance to animal and human health.

Keywords: Broiler chicken, CTX gene, ESBL, Escherichia coli, MDR, Human health

Correspondence:

Mustofa Helmi Effendi

⁴Halal Research Center, Airlangga University, Surabaya, Indonesia

*Corresponding author Email: mheffendi@yahoo.com

INTRODUCTION

Extended Spectrum Beta-Lactamase (ESBL) is derived from the mutated beta-lactamase enzyme [1]. Beta-lactamase is an enzyme produced by bacteria that acts to inactivate beta-lactam class of antibiotics [2]. This mutation causes an increase in the enzymatic activity of beta-lactamase so that the enzyme can hydrolyze third generation cephalosporins and aztreonam [1]. ESBL genes are often found, namely the type of cefotaximase (CTX-M), temoneira (TEM), and variable sulphydryl (SHV). CTX-M type enzymes have hydrophilic ability against cephalosporins, especially cefotaxime so they are called CTX-M [2]. Extended Spectrum Beta-Lactamase is most commonly produced by the Enterobacteriaceae group, especially Escherichia coli and Klebsiella pneumoniae [3,1]. Escherichia coli is one of the causes of infection in humans and animals which can easily cause resistance to antibiotics, one of which is resistance caused by ESBL [1]. ESBL-producing bacteria can also be resistant to the antibiotics class of aminoglycoside, fluoroquinolone, tetracycline, chloramphenicol, and sulfamethoxazole-trimethoprim. The multidrug nature of resistance to third generation cephalosporin and other class antibiotics is often found in ESBL-producing bacteria [4]. The presence of ESBL-producing bacteria in an infection can result in treatment failure. Antibiotic resistance causes a decrease in the effectiveness of treatment, increases transmission of infection, increases mortality, and increases the cost of health care, while the discovery of

new antibiotics is getting less and less [5,6]. The nature of ESBL-producing Escherichia coli resistance to antibiotics results in limited treatment options [7]. Escherichia coli which produces ESBL in livestock and the environment makes a potential risk factor for public health and is a factor in the transmission of antibiotic resistance in humans [8]. The existence of ESBL-producing Escherichia coli in poultry in Indonesia has been reported in broiler feces in chicken slaughterhouses in Bogor by molecular detection (genotypic) examination using a PCR of 6% [7]. and clinical microbiology (phenotypic) examination by the double disc method of 25% [4].

MATERIALS AND METHODS

Isolation And Identification of Escherichia coli

The total sample used in the study was 160 broilers cloaca swabs from 6 districts in Blitar District. Isolation and identification of Escherichia coli was carried out by [9]. Cloacal swab sampling used the Amies Swab Viscosa (deltalab, Spain), and during the trip to the laboratory it was stored at cold temperatures [9,10,11]. Isolation of Escherichia coli bacteria using selective media MacConkey Agar no. 3 CM0115 (Oxoid, England) was incubated at 35-37°C for 20-24 hours. Pure colonies of Escherichia coli were identified by biochemical testing of IMVIC (Indol-Motility, Methyl Red, Voges Proskauer, Citrate) and TSIA (Triple Sugar Iron Agar)[12].

Confirmation Test of ESBL-Producing *Escherichia coli* And Antibiotic Resistance

Resistance tests in this study used 5 different types of antibiotics, including the beta lactam (Ampicilin) group, the aminoglycoside group (Streptomycin), the macrolide group (Erythromycin), the tetracycline group (Tetracycline), and the sulfonamide group (Sulfamethoksazol-Trimetropin) so The results of resistance can be seen the existence of multidrug resistance, namely the sensitivity of *Escherichia coli* bacteria to more than 3 classes of antibiotics. ESBL-producing *Escherichia coli* bacteria is tested from broiler chicken cloaca swabs were confirmed by the Double Disc Synergy Test (DDST) method on Mueller-Hinton agar according to recommendations from the Clinical Laboratory Standard Institute (CLSI) [13] using commercially available antibiotic disks, namely Amoxycillin-clavulanic 30µg (Oxoid, England), Cefotaxime 30µg (Oxoid, England), Ceftazidime 30µg (Becton Dickinson, USA), and Aztreonam 30µg (Oxoid, England). This confirmation test with DDST method was conducted to evaluate the presence of inhibitor zones of ESBL activity with clavulanic acid using the Kirby-Bauer disk diffusion method on Mueller-Hinton agar (Merck, Germany) [12,13]. The results of the evaluation after incubation showed a synergy between Cefotaxime / Ceftazidime with the Amoxycillin-clavulanic combination in the form of an increase in inhibition zone ≥ 5 mm between the diameter of the cephalosporin disk and the cephalosporin-clavulanate combination stated the *Escherichia coli* positive ESBL bacteria [13,14, 15].

CTX Gene Characterization Using The PCR Method

The ESBL-producing *Escherichia coli* bacteria that has been phenotypically confirmed by the DDST method, then genotypically confirmed by further analyzing the presence of ESBL CTX subtypes gene using molecular identification of PCR. Bacterial DNA was isolated with a mini QIAamp® DNA kit (QIAGEN, Germany). *Escherichia coli* ATCC 35218 was used as a positive control standard for strains of ESBL-producing bacteria and *Escherichia coli* ATCC 25922 was used as a negative control. The primers used to encode the encoding gene are CTX-MA (CGCTTGGCGATGTGCAG), CTX-MB (ACCGGATATCGTTGGT), with denaturation temperatures of 94 °C, 2 minutes; extended denaturation of 94 °C, 1 minute; annealing 52 °C, 30 seconds; extension 72 °C, 45 seconds; extended extension 72 °C, 5 minutes, this reaction is carried out for 30 cycles. PCR results were visualized by electrophoresis using agarose gel 2% (Invitrogen, USA) [16,17].

RESULTS

Isolation and identification of broiler chicken cloaca swabs from a total of 160 samples showed 100% (Table 1) of the presence of *Escherichia coli* presumptive isolates on MacConkey Agar media. *Escherichia coli* colony has a small round shape and semi-mucoid, reddish pink colony. The bacterial culture was then confirmed by biochemical testing using IMVIC and TSIA. The pure colony of *Escherichia coli* was then tested for antibiotic sensitivity. The incidence of Multidrug Resistant (MDR) *Escherichia coli* as shown on Figure 1, in Broiler chickens in Blitar District is quite high around 85.63%, among others in Ponggok sub-district by 90% (45/50), in Srengat sub-district by 50% (15 / 30), in Kademangan sub-district by 100% (20/20), in Bakung sub-district by 100% (20/20), in Talun sub-district by 90% (18/20), and in Garum sub-district by 95% (19/29), as shown in Table 1. *Escherichia*

coli which have MDR resistance properties in broiler chickens in Blitar District there were 137 isolates from a total of 160 *Escherichia coli*. The incidence of MDR in *Escherichia coli* on broiler chickens for each district was shown on Figure 2. The percentage of positive MDR events was more dominant in all districts in Blitar district which were used as samples in this study. Kademangan and Bakung Subdistricts had the highest percentage of MDR *Escherichia coli* in broiler chickens by 100%, followed by Garum subdistricts (95%), Ponggok and Talun subdistricts (90%), and the lowest events occurred in Srengat subdistrict (54.55%).

The incidence rate of ESBL-producing *Escherichia coli* in cloaca swabs in broiler chickens with the Double Disc Synergy Test (DDST) method in the results of this study showed a figure of 46 (28.75%) positive ESBL isolates (Table 1). The incidence of *Escherichia coli* producing ESBL in Broiler chickens in Blitar is quite high, including in Ponggok sub-district by 8% (4/50), in Srengat sub-district by 16.67% (5/30), in Kademangan sub-district by 85% (17/20), in Bakung sub-district by 100% (20/20), and in Talun sub-district and Garum sub-district there were no ESCHB-producing *Escherichia coli* events detected. Cefotaxime synergy with the combination of amoxilin-clavulanate in the form of an expansion of the inhibition zone between the two disks showed that the isolate was positive ESBL (Figure 3 and Figure 4). Almost ESBL producing *E. coli* detected have CTX gene 97.8% (45/46), as shown on Table 1 and revealed on Figure 5.

DISCUSSION

The current concern about aspects of human health and animal health is the emergence of strains of *Escherichia coli* which have the ability to resist some antibiotics, this can occur because of the pattern of antibiotic use on farms continuously both in treatment doses and their use as feed and growth additives. Excessive use of antibiotics and outside the control limit has the potential to cause antibiotic resistance and is likely to spread the resistant gene to other bacteria, so that it can affect treatment failure in humans and in animals [18,19]. Multiple drug resistance, including ampicillin, streptomycin, and tetracycline derivatives can almost always be found in every case of bacterial resistance to antibiotics, especially for *Escherichia coli* and *Salmonella* spp [20,21,22]. This statement supports the test results, because there are isolates that show *Escherichia coli* resistance patterns against several antibiotic preparations at once, namely erythromycin, ampicillin, tetracycline, and streptomycin. The occurrence of resistance is not a new phenomenon and is a problem for the whole world [23, 24].

The incidence of *Escherichia coli* producing ESBL in the cloacal swab in broiler chickens is in accordance with the incidence of *Escherichia coli* in the faeces of broiler chickens in Bogor by 6% [7], however much smaller than the incidence of *Escherichia coli* producing ESBL in India in 6 broiler chickens around 87% [20]. In this study also conducted research on ESBL producing *E. coli*. This was based on research conducted by [25] which stated that all ESBL-producing isolates were also MDR isolates that isolated from layer chicken. The nature of multidrug resistance of these isolates may be explained by the fact that ESBL is mediated by plasmids carrying multiresistant genes by plasmids, transposons and integrons and also they are ready to be transferred to other bacteria, not necessarily same species. Bacteria with various resistance to antibiotics are widely distributed in animals and the

environment. The facts supported by recent surveys from another layer chicken farms [26], have illustrated an alarming trend related to resistance among ESBL-producing organisms isolated from animals and the environment.

Escherichia coli producing ESBL coli in broiler chickens for each sub-district was shown in Figure 4. The incident occurred in 4 sub-districts of the 6 examined sub-districts, including Ponggok, Srengat, Kademangan, and Bakung. The highest percentage of events occurred in Bakung sub-district (100%), and in the Talun and Garum sub-districts the ESBL-producing *Escherichia coli* was not found in broiler chickens.

Molecular identification as shown in Table 1 showed that 45 isolates (97.8%) were isolates of *Escherichia coli* bacteria that were produced by CTX gene encoding ESBL, as shown on Figure 5. The CTX encoding gene is most commonly found in *Escherichia coli*. CTX type enzymes have a hydrophilic ability against cephalosporins, especially cefotaxime, so called CTX [27]. The molecular identification results shown in Figure 5 showed the visualization of the CTX gene fragment band. Positive results on the CTX gene showed electrophoretic results of the samples depicting the same fragment as positive control with a gene length of 550 bp. The negative results of the CTX-M gene on ESBL showed that the electrophoresis of the sample did not represent the same fragment as positive control [15].

Our findings from molecular identification illustrate that CTX gene was the most common genotype on *E. coli* isolated from broiler chicken, almost 97.8% (45/46), as shown on Table 1 and revealed on Figure 5. This finding was similar to in Turkey [28] and around the world that also report CTX as the dominant ESBL genotype [29,30]. Similarly, in animals, the prevalence of ESBL-producing *E. coli* in China has increased rapidly in years with CTX being the main gene coding that applies to ESBL [31]. It is known that, in general, ESBL genes are located on plasmids which can spread easily between commensal and pathogenic bacteria in poultry farms and the environment.

Our results were similar to previous studies in the United Kingdom showing that the blaCTX-M-1 gene was detected in 5 genes from 32 (15.6%) samples of broiler manure and showed this the dominant order type in the UK broiler the faeces is CTX-M-1 [32]. Another study conducted in Korea reported that *E. coli* from 9 (9.0%) of 100 chicken feces samples examined resulted in ESBL-type CTXM, namely CTX-M-14 (n = 4), CTX-M-15 (n = 4), and CTX-M-1 (n = 1) [33]. The rapid increase and spread of CTX-M worldwide in *E. coli* is a matter of concern in both human and veterinary medicine. For this reason, *E. coli* producing CTX-M has been reported which can transfer this determinant to others such as commensal Enterobacteriaceae, such as *K. pneumoniae*, or to pathogens such as *Shigella* or *Salmonella* [34].

The results showed that 137 isolates from a total of 160 *E. coli* isolates described an MDR pattern with at least three antibiotics. ESBL production is often mediated by plasmids that often carry genes encoding resistance to other drug classes, such as fluoroquinolones, aminoglycosides, sulfa derivatives and trimethoprim [35]. Drugs of this class are often used in broiler production, co-selection through the use of these drugs may play a role in the selection of ESBL-producing isolates [36]. The presence of the CTX gene for ESBL-producing *E. coli* in broilers in Blitar can be an important risk factor for environmental pollution and spread to the food chain. ESBL contamination generated by *E. coli* in poultry products can easily be acquired from

poultry to their farm environment through contact with contaminated water or during house cleaning [37]. Surface water contaminated with faecal bacteria has long been a problem because water quality has the potential for disease transmission [38].

Human populations can be exposed to antimicrobial resistant bacteria through contaminated surface water as it is an important source of drinking water production and is used for recreational activities and crop irrigation. In addition, animals can also be exposed to these bacteria by drinking from or foraging in contaminated water [39]. ESBL producers are expected to increase in the future in animals and humans [7, 33, 40]. However, more research is needed to understand how persistence and spread can be minimized.

CONCLUSION

Molecular identification of CTX gene in ESBL-producing *Escherichia coli* on broilers cloacal swabs in Blitar district, as many as 45 (97.8%) out of a total of 46 ESBL-producing *Escherichia coli* isolates found in broiler chicken cloacal swabs in Blitar district. MDR distribution was found in 6 sub-districts in Blitar district from 6 sub-districts used as sampling areas, while the distribution of ESBL-producing *Escherichia coli* events was found in 4 sub-districts in Blitar, namely Ponggok, Srengat, Kademangan and Bakung. These results indicate that the spread of ESBL-producing *Escherichia coli* was sufficiently large, therefore that it can cause high antimicrobial resistance to animal and human health. This spread ESBL enzymes among isolates that produced by healthy broilers can be a problem for food safety, the environment, humans, animals, and other pathogenic bacteria.

DECLARATION OF CONFLICT OF INTEREST

None.

ACKNOWLEDGMENT

This research was funded by the Direktorat Riset dan Pengabdian Masyarakat, Deputy Bidang Penguatan Riset dan Pengembangan Kementerian Riset dan Teknologi/Badan Riset dan Inovasi Nasional, Indonesia in fiscal year 2020 with grant number : 756/UN3.14/PT/2020.

REFERENCES

- Paterson, DL and Bonomo RA. Extended Spectrum Beta-Lactamases : a Clinical Update. *Clinical Microbiology Reviews*. 2005; 18: 657–686.
- Biutifasari V.. Extended Spectrum Beta – Lactamase (ESBL). *Ocean Biomedicina Journal*. 2018; 1: 1–6.
- Bramantoro, Purwati, Hamidah. The prevalence of Extended Spectrum Beta-Lactamase (ESBL) in third generation cephalosporin usage among sepsis patients in the Department of Internal Medicine RSUD DR. Soetomo Surabaya. *Folia Medica Indonesiana*. 2013; 49: 244–251.
- Asruroh CA, Sudarwanto MB, Latif H. Incidence rate of *Escherichia coli* producing Extended Spectrum Beta-Lactamase isolated from broiler faeces in Bogor. *Jurnal Sain Veteriner*. 2016; 34: 42–49.
- Handayani RS, Siahaan S, Herman MJ. Antimicrobial resistance and implementation of control policies in hospitals in Indonesia. *Jurnal penelitian dan pengembangan pelayanan kesehatan*. 2017; 1: 131–140.

6. [21]ndi MH, Bintari IG, Aksoro EB, Hermawan IP. Detection of blaTem Gene of *Klebsiella pneumoniae* Isolated from swab of food-producing animals in East Java. *Tropical Animal Science Journal*. 2018; 41: 174–178.
7. Lukman DW, Sudarwanto MB, Purnawarman T, Latif H, Pisestyani H, Sukmawinata E, Akineden O. CTX-M-1 and CTX-M-55 Producing *Escherichia coli* Isolated from Broiler Feces in Poultry Slaughterhouse, Bogor, West Java Province. *Global Advanced Research Journal of Medicine and Medical Sciences*. 2016; 5(12): 287-291.
8. Sudarwanto MB, Lukman DW, Purnawarman T, Latif H, Pisestyani H, Sukmawinata E. Multidrug resistance Extended Spectrum Beta-Lactamase and AmpC producing *Escherichia coli* isolated from the environment of Bogor Slaughterhouse, Indonesia. *Asian Pacific Journal of Tropical Biomedicine* 2017; 7: 708–711.
9. Effendi, MH, Harijani N, Budiarto, Triningtya NP, Tyasningsih W, Plumeriastuti H. Prevalence of pathogenic *Escherichia coli* isolated from subclinical mastitis in East Java Province, Indonesia. *Indian Veterinary Journal*. 2019; 96: 22–25.
10. Putra ARS, Effendi MH, [27]sarto S, Tyasningsih W. Molecular identification of Extended Spectrum Beta-Lactamase (ESBL) producing *Escherichia coli* isolated from dairy cows in East Java Province, Indonesia. *Indonesian Veterinary Journal* 2019; 96: 26–30.
11. Seni J, Falgenhauer L, Simeo N, Mirambo MM, Imirzalioglu C, Matee M, Rweyemamu M, Chakraborty T, Mshana SE. Multiple ESBL-producing *Escherichia coli* sequence types carrying quinolone and aminoglycoside resistance genes circulating in companion and domestic farm animals in Mwanza, Tanzania, harbor commonly occurring plasmids. *Frontiers in Microbiology* 2016; 7: 1–8.
12. Effendi, MH, [2]ijani N, Yanestria SM, Hastutie P. Identification of shiga toxin-producing *Escherichia coli* in raw milk samples from dairy cows in Surabaya, Indonesia. *Philippine J Ved Med*. 2018; 55(S1):109-114.
13. CLSI. M100 Performance Standards for Antimicrobial, 27th ed. Clinical and Laboratory Standards Institute, USA. 2017.
14. Savira M. The validity of the conventional method is modified to the conventional method and the ESBL chromid™ for the detection of Extended-Spectrum Beta-Lactamases producing bacteria. *JIK* 2014; 2: 81–90.
15. Putra AR. Effendi MH, Koesdarto S, Suwarno S, Tyasningsih W, Estoepangestie AT. Detection of the extended spectrum β-lactamase produced by *Escherichia coli* from dairy cows by using the Vitek-2 method in Tulungagung regency, Indonesia. *Iraqi Journal of Veterinary Sciences*. 2020; 34 (1): 203-207.
16. Ali T, Rahman SU, Zhang L, Shahid M, Zhang S, Liu G, Gao J, Han B. ESBL-producing *Escherichia coli* from cows suffering mastitis in China contain clinical class 1 integrons with CTX-M linked to ISCR1. *Frontiers in Cellular and Infection Microbiology*. 2016; 7: 1–11.
17. Hasibuan M, Suryanto D, Kusumawati RL. [29]otypic and molecular detection of blaCTX-M gene Extended-Spectrum Beta-Lactamases in *Escherichia coli* and *Klebsiella pneumoniae* of North Sumatera isolates. *IOP Conference Series: Earth and Environmental Science*. 2018; 130.
18. Kurniawati A, Lukman DW, Wibawan IWT. Antibiotic resistance in *Salmonella* isolates from Australian cattle imported from the Tanjung Priok Port in Jakarta. *Jurnal Veteriner*. 2016; 17: 449–456.
19. Safitri RD, Cicilia R, Bintari IG, Hermawan IP, Effendi MH, Er[3]wati R, Rahmahani J. Detection of encoding gene extended spectrum beta lactamase on *Escherichia coli* isolated from broiler chicken meat in traditional market Surabaya. *International Journal of Development Research*, 2017; 7(11): 17354-17357.
20. Brower CH, Mandal S, Ha[23]S, Sran M, Zehra A, Patel SJ, et al. The prevalence of Extended-Spectrum Beta Lactamase-producing multidrug-resistant *Escherichia coli* in poultry chickens and variation according to farming practices in Punjab, India. *Environmental Health Perspectives*. 2017; 125: 1–10.
21. Estiningsih D, Puspitasari I, Nuryastuti T. Identification of Multidrug-Resistant Organisms Infection in Neonatal Intensive Care Unit (UNIT). *Jurnal Manajemen dan Pelayanan Farmasi*. 2016; 6: 243-248.
22. Rahmahani J, Salamah, Mufasirin, Tyasningsih W Effendi MH. Antimicrobial Resistance Profile of *Escherichia coli* From Cloacal Swab of Domestic Chicken In Surabaya Traditional Market. *Biochem. Ill. Arch*. 2020; 20(1): 2993-2997.
23. Overdeest I, Willemsen I, Rijnsburger M, Eustace A, Lixu, Hawkey P, et al. *Extended-spectrum beta-lactamase* genes of *Escherichia coli* in chicken meat and humans, The Netherlands. *Emerg Infect Dis*. 2011; 17: 1216-1222.
24. Kristianingtyas L, Effendi, MH, Tyasningsih W, Kurniawan F. Genetic Identification of blaCTX-M Gene and blaTEM Gene on Extended Spectrum Beta Lactamase (ESBL) Producing *Escherichia Coli* from [5]gs. *Indian Vet J*. 2020; 97 (01): 17 – 21
25. Witaningrum AM, Wibisono FJ, Permatasari DA, Tyasningsih W, Effendi MH, Kurniawan F. Potential Hazards of Antibiotics Resistance On *Escherichia Coli* Isolated From Cloacal Swab In Several Layer Poultry Farms, Blitar, Indonesia. *Indian Journal of Public Health Research & Development* 2020; 11 (03): 529-2435.
26. Wibisono FJ, Sumiarto B, Untari [28] Effendi MH, Permatasari DA, Witaningrum AM. The Presence of Extended Spectrum Beta-Lactamase (ESBL) Producing *Escherichia coli* On Layer Chicken Farms In Blitar Area, Indonesia. *BIODIVERSITAS*. 2020; 21 (6): 2671-2671.
27. Bradford P. Extended Spectrum Beta Lactamase in the 21 century: characterization, epidemiology, and detection of this important resistant threat. *Clinical Microbiol Rev*. 2001; 14: 933–951.
28. Tekiner IH, Ozpinar H. Occurrence and characteristics of extended spectrum beta-lactamases producing Enterobacteriaceae from foods of animal origin. *Brazilian J. Microbiology*. 2016. 47: 444–451.
29. Geser NS, Stephan R, Hachler H. Occurrence and characteristics of extended-spectrum beta-lactamase (ESBL) producing Enterobacteriaceae in food producing animals, minced meat and raw milk. *BMC Vet. Res*. 2012; 8:1-9.
30. Kar D, Bandyopadhyay S, Bhattacharyya D, Samanta I, Mahanti A, Nanda P [25] Molecular and phylogenetic characterization of multidrug resistant extended spectrum beta-lactamase producing *Escherichia coli* isolated from poultry and cattle in Odisha, India. *Infect. Genet. Evol*. 2015; 29: 82–90.

31. Rao L, Lv L, Zeng Z, Chen S, He D, Chen X, Wu C, Wang Y, Yang T, Wu P, Liu Y, Liu JH. Increasing prevalence of extended-spectrum cephalosporin-resistant *Escherichia coli* in food animals and the diversity of CTX-M genotypes during 2003-2012. *Vet. Microbiol.* 2014; 172: 534-541.
32. Horton RA, Randall LP, Snary EL, Cockrem H, Lotz S, Wearing H, Duncan D, Rabie A, McLaren I, Watson E, La Ragione RM, Coldham NG. Fecal carriage and shedding density of CTX-M extended-spectrum-lactamase-producing *Escherichia coli* in cattle, chickens, and pigs: implications for environmental contamination and food production. *Appl. Environ. Microbiol.* 77(11): 3715-3719.
33. Tamang MD, Gurung M, Kang MS, Nam HM, Moon DC, Jang GC, Jung SC, Park YH, Lim SK (2014). Characterization of plasmids encoding CTX-M β -lactamase and their addiction systems in *Escherichia coli* isolates from animals. *Vet Microbiol.* 2011; 174: 456-462.
34. Sudarwanto MB, Lukman DW, Latif H, Herwin Pisestyani H, Sukmawinata E, Akineden Ö, Usleber E. CTX-M producing *Escherichia coli* isolated from cattle feces in Bogor slaughterhouse, Indonesia. *Asian Pac. J. Trop. Biome* 2016; 6(7): 605-608.
35. Dierikx C, van der Goot J, Fabri T, van Essen-Zandbergen A, Smith H, Mevius D. Extended-spectrum- β -lactamase- and AmpC- β -lactamase-producing *Escherichia coli* in Dutch broilers and broiler farmers. *J. Antimicrob. Chemother.* 2012; 68: 63-67.
36. Dierikx C, van Essen-Zandbergen A, Veldman K, Smith H, Mevius D. Increased detection of extended spectrum beta-lactamase producing *Salmonella enterica* and *Escherichia coli* isolates from poultry. *Vet. Microbiol.* 2010; 145: 273-278.
37. Skockova A, Kolackova I, Bogdanovicova K, Karpiskov R. Characteristic and antimicrobial resistance in *Escherichia coli* from retail meats purchased in the Czech Republic. *Food Control.* 2015; 47: 401-406.
38. Ma J, Liu JH, Lv L, Zong Z, Sun Y, Zheng H, Chen Z, Zeng ZL. Characterization of extended spectrum β -lactamase genes found among *Escherichia coli* isolates from duck and environmental samples obtained on a duck farm. *Appl. Environ. Microbiol.* 2012; 78(10): 3338-3673.
39. Blaak H, Lynch G, Italiaander R, Hamidjaja RA, Schets FM, de Roda Husman AM. Multidrug-resistant and extended spectrum beta-lactamase-producing *Escherichia coli* in Dutch surface water and wastewater. *PLoS ONE.* 2015; 10(6): e0127752.
40. Wibisono FJ, Sumiarto B, Untari T, Effendi MH, Matasari DA, Witaningrum AM. Resistance Profile of Extended Spectrum Beta Lactamase-Producing *Escherichia coli* Bacteria using Vitek® 2 Compact Method. *Buletin Peternakan.* 2020; 44 (2): 48-53

Table 1. Data of ESBL producing *Escherichia coli* and MDR on Broiler chickens in Blitar

Location	Sample size	Positive of <i>Escherichia coli</i>	MDR		ESBL		CTX gene
			Positive	Negative	Positive	Negative	
Ponggok	50	50	45 (90 %)	5 (10 %)	4 (8 %)	46 (92 %)	4 (100 %)
Srengat	30	30	15 (50 %)	15 (50 %)	5 (16.67 %)	25 (83.33 %)	5 (100 %)
Kademangan	20	20	20 (100 %)	-	17 (85 %)	3 (15 %)	16 (94.1 %)
Bakung	20	20	20 (100 %)	-	20 (100 %)	-	20 (100 %)
Talun	20	20	18 (90 %)	2 (10 %)	-	20 (100 %)	-
Garum	20	20	19 (95 %)	1 (5 %)	-	20 (100 %)	-
Total Broiler	160	160 (100%)	137 85.63 %	23 14.37 %	46 28.75 %	114 71.25 %	45 97.8 %

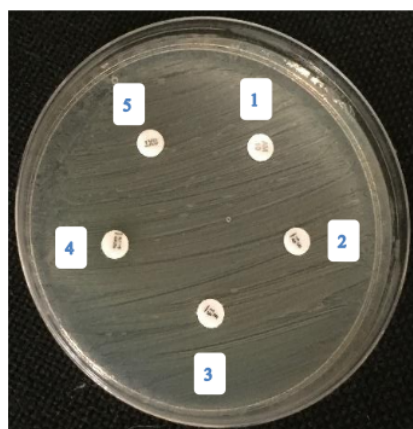


Figure 1. Patterns of *Escherichia coli* resistance to several classes of antibiotics (1) Ampicillin, (2) Streptomycin, (3) Erythromycin, (4) Tetracycline, and (5) Sulfamethoxazole-Trimethoprim

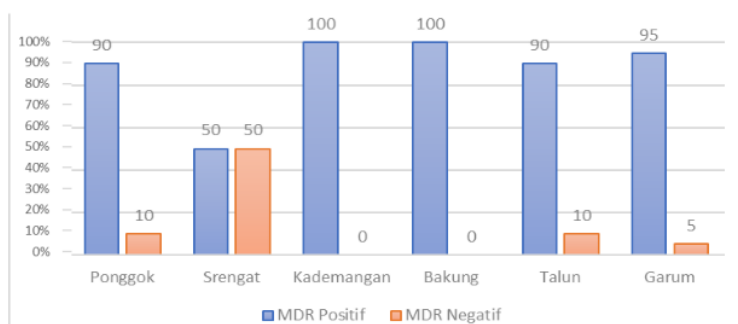


Figure 2. Diagram of Multi-Drug Resistant (MDR) of *Escherichia coli* on Broiler chickens in Blitar district

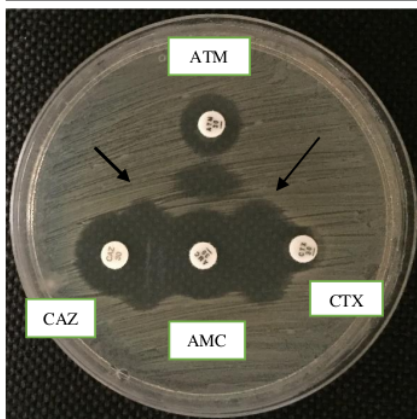


Figure 3. Positive ESBL-producing *Escherichia coli* with Double Disc Synergy Test (DDST) Method. Description: black arrow: synergy formed, ATM: Aztreonam, CAZ: Ceftazidime, AMC: Amoxicillin clavulanic, and CTX: Cefotaxime.

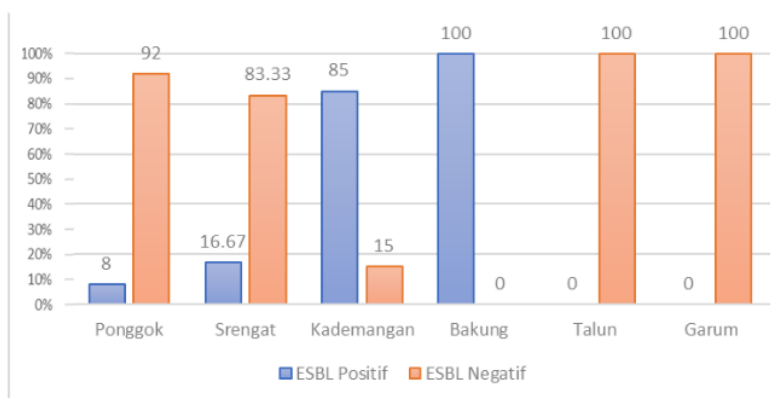


Figure 4. Diagram of ESBL-producing *Escherichia coli* on Broiler chickens in Blitar District

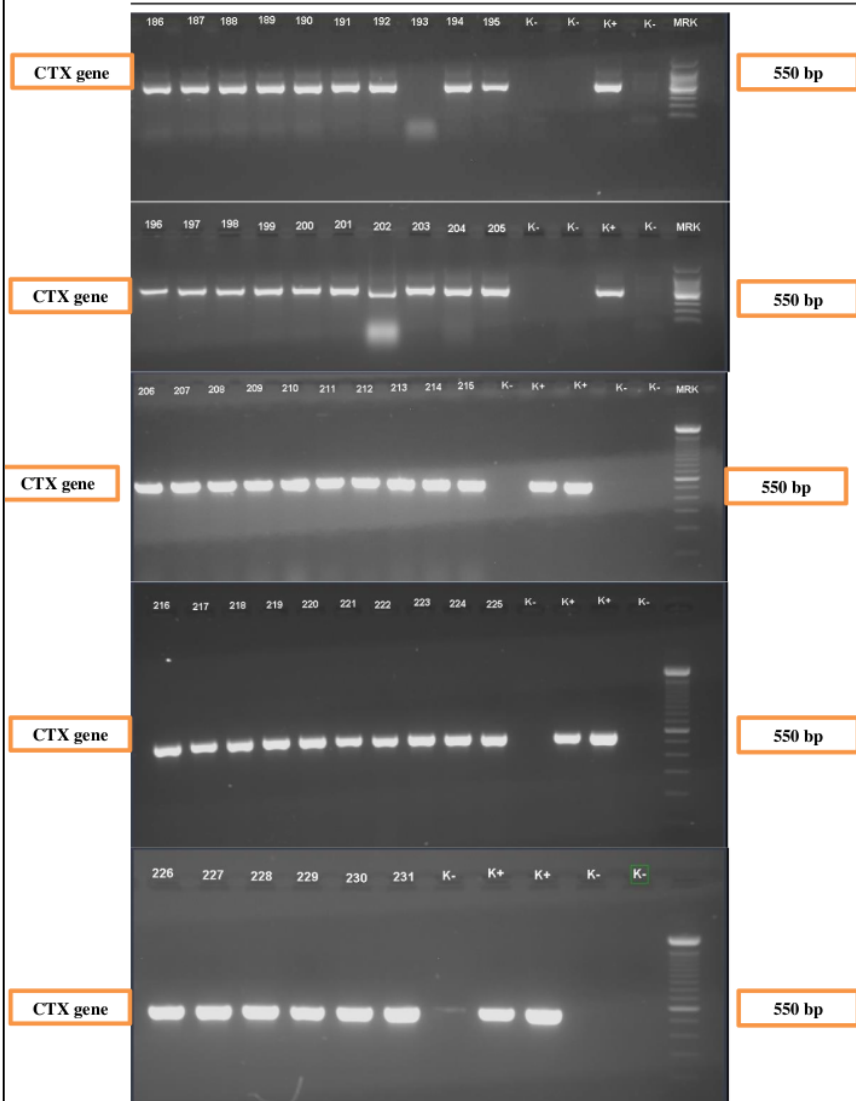


Figure 5. Molecular identification of ESBL-producing *Escherichia coli* of CTX gene and sample code 193 there was negative for CTX gene.

CTX Gene of Extended Spectrum Beta-Lactamase (ESBL) Producing Escherichia coli on Broilers in Blitar, Indonesia

ORIGINALITY REPORT

23%

SIMILARITY INDEX

5%

INTERNET SOURCES

13%

PUBLICATIONS

18%

STUDENT PAPERS

PRIMARY SOURCES

- 1** Submitted to Writtle Agricultural College 2%

Student Paper
- 2** "13th European Congress of Clinical Microbiology and Infectious Diseases", Clinical Microbiology and Infection, 2003 2%

Publication
- 3** Angela H. A. M. van Hoek, Leo Schouls, Marga G. van Santen, Alice Florijn, Sabine C. de Greeff, Engeline van Duijkeren. "Molecular Characteristics of Extended-Spectrum Cephalosporin-Resistant Enterobacteriaceae from Humans in the Community", PLOS ONE, 2015 2%

Publication
- 4** Submitted to Massey University 1%

Student Paper
- 5** Submitted to Universitas Jember 1%

Student Paper
- 6** Submitted to Georgia State University 1%

Student Paper

7	Submitted to Higher Education Commission Pakistan Student Paper	1 %
8	Hoang Le HUY, Nobuo KOIZUMI, Harimurti NURADJI, Susanti et al. "Antimicrobial resistance in <i>Escherichia coli</i> isolated from brown rats and house shrews in markets, Bogor, Indonesia", Journal of Veterinary Medical Science, 2021 Publication	1 %
9	onlinelibrary.wiley.com Internet Source	1 %
10	Submitted to Askham Bryan College, North Yorkshire Student Paper	1 %
11	Submitted to Monash University Student Paper	1 %
12	Submitted to Armstrong Atlantic State University Student Paper	1 %
13	Submitted to Kwame Nkrumah University of Science and Technology Student Paper	1 %
14	"Poster Presentations", International Journal of Antimicrobial Agents, 2015. Publication	1 %

15 Abasiofiok Ibekwe, Lisa Durso, Thomas F. Ducey, Adelumola Oladeinde et al. "Diversity of Plasmids and Genes Encoding Resistance to Extended-Spectrum β -Lactamase in Escherichia coli from Different Animal Sources", Microorganisms, 2021 1 %
Publication

16 Submitted to Chester College of Higher Education 1 %
Student Paper

17 Submitted to University of Western Sydney 1 %
Student Paper

18 Submitted to University of Global Health Equity 1 %
Student Paper

19 Submitted to Universitas Islam Internasional Indonesi 1 %
Student Paper

20 Submitted to The Hong Kong Polytechnic University <1 %
Student Paper

21 Submitted to University of the Philippines - Main Library <1 %
Student Paper

22 Submitted to University of Reading <1 %
Student Paper

23

Voets, Guido M., Tamara N. Platteel, Ad C. Fluit, Jelle Scharringa, Claudia M. Schapendonk, James Cohen Stuart, Marc J. M. Bonten, and Maurine A. L. Hall. "Population Distribution of Beta-Lactamase Conferring Resistance to Third-Generation Cephalosporins in Human Clinical Enterobacteriaceae in The Netherlands", PLoS ONE, 2012.

Publication

<1 %

24

Submitted to October University for Modern Sciences and Arts (MSA)

Student Paper

<1 %

25

Submitted to Muhimbili University of Health and Allied Sciences

Student Paper

<1 %

26

Submitted to Texas Woman's University

Student Paper

<1 %

27

Submitted to University of KwaZulu-Natal

Student Paper

<1 %

28

Submitted to University of Portsmouth

Student Paper

<1 %

29

Keduetswe Matloko, Justine Fri, Tshepiso Pleasure Ateba, Lesego G. Molale-Tom, Collins Njie Ateba. "Evidence of potentially unrelated AmpC beta-lactamase producing Enterobacteriaceae from cattle, cattle

<1 %

products and hospital environments commonly harboring the blaACC resistance determinant", PLOS ONE, 2021

Publication

30

Submitted to Udayana University

Student Paper

<1 %

31

R. Cantón. "Prevalence and spread of extended-spectrum β -lactamase-producing Enterobacteriaceae in Europe", Clinical Microbiology and Infection, 1/2008

Publication

<1 %

Exclude quotes Off

Exclude matches Off

Exclude bibliography Off