



## Editor-in-Chief

**Anjum V. Sherasiya** - Ex-Veterinary Officer, Department of Animal Husbandry, Gujarat State, India  
<https://orcid.org/0000-0002-1598-1820>

## Founding Associate Editor

**R. G. Jani** - Ex-Coordinator of Wildlife Health, Western Region Centre, Indo-US Project, Department of Veterinary Medicine, Veterinary College, Anand Agricultural University, Anand - 388001, Gujarat, India.

## Associate Editors

**B. A. Lubisi** - Virology, MED Programme, ARC - Onderstepoort Veterinary Institute, No. 100 Old Soutpan Road, Onderstepoort, Tshwane, 0110, South Africa  
Google Scholar profile: <https://scholar.google.com/citations?user=Wwcc5-8AAAAJ&hl=en>  
Interest area: Virology

**Girija Regmi** - Department of Cardiovascular Biology, Oklahoma Medical Research Foundation, Oklahoma City, Oklahoma, USA  
<https://orcid.org/0000-0001-6827-3783>  
Google Scholar profile: <https://scholar.google.com/citations?user=JRhk5-sAAAAJ&hl=en>  
Interest area: Anatomy - Animal Hygiene, Husbandry, Nutrition, and Food Control - Animal Nutrition - Animal Reproduction - Animal Science - Antimicrobial resistance - Bacteriology - Biological Sciences - Biomedical Sciences - Hematology - Immunohistochemistry - Microbiology - Molecular Biology - Veterinary Anatomy, Histology, and Physiology - Veterinary Medicine - Veterinary Medicine and Infectious Diseases - Veterinary Pathology - Veterinary Science - Zoonoses

**Widya Paramita Lokapirnasari** - Professor, Department of Animal Husbandry, Airlangga University, FKH, Kampus C Unair, Jl Mulyorejo, Surabaya, Indonesia  
<https://orcid.org/0000-0002-0319-7211>  
Google Scholar profile: <https://scholar.google.co.id/citations?user=eS3yVQQAAAAJ&hl=id>  
Interest area: Animal Nutrition - Cattle Husbandry - Feed Supplements - Polymerase Chain Reaction - Poultry Husbandry - Probiotics

**Ayman Abdel-Aziz Swelum** - Professor of Theriogenology, Faculty of Veterinary Medicine, Zagazig University, Zagazig, Egypt; Department of Animal Production, College of Food and Agriculture Sciences, King Saud University, Riyadh, Saudi Arabia  
<http://orcid.org/0000-0003-3247-5898>  
Google Scholar profile: <https://scholar.google.com/citations?user=OZTI3poAAAAJ&hl=en>  
Profile: <http://www.staffdata.zu.edu.eg/en/ShowData/18313>  
<https://faculty.ksu.edu.sa/ar/aswelum>  
Interest area: Animal Reproduction - Animal Production - Embryo transfer - Artificial Insemination

**Mario Manuel Dinis Ginja** Department of Veterinary Sciences, Center for Research and Agro-Environmental and Biological Technologies, University of Trás-os-Montes and Alto Douro, Portugal

<https://orcid.org/0000-0002-0464-7771>

Publons profile: <https://publons.com/researcher/1180094/mario-manuel-dinis-ginja/>

Interest area: Orthopaedics - Radiology (Diagnostic) - Sonography - Veterinary Medicine - Veterinary Science

**Panagiotis E Simitzis** - Laboratory of Animal Breeding and Husbandry, Department of Animal Science, Agricultural University of Athens, 75 Iera Odos, 11855, Athens, Greece

<http://orcid.org/0000-0002-1450-4037>

Google Scholar profile: <https://scholar.google.com/citations?user=14F6cAQA AAAJ&hl=en>

Interest area: Dietary Antioxidants - Feed Supplements - Animal Behaviour - Animal Welfare - Livestock Management - Poultry Husbandry - Sheep Husbandry - Swine Husbandry - Products' Quality Assessment

**Gul Ahmad** - Associate Professor of Biology (Tenured), Department of Natural Sciences, School of Arts & Sciences, Peru State College, Peru, Nebraska 68321, USA

Google Scholar profile: <https://scholar.google.com/citations?user=WOIDNKUAAAAJ&hl=en>

**Bartosz Kieronczyk** - Poznan University of Life Sciences, Poznan, Greater Poland, Poland

<https://orcid.org/0000-0001-6006-117X>

Google Scholar profile: <https://scholar.google.pl/citations?user=SyprUmAAAAJ&hl=en>

Interest area: Animal Nutrition - Animal Science - Antimicrobial resistance - Aquaculture - Feed Supplements - Livestock Management - Livestock Products Technology - Microbiology - Physiology - Poultry Science - Waste Management of Agro Products

**Alberto Elmi** - University of Bologna, Ozzano dell'Emilia, Bologna, Italy

<https://orcid.org/0000-0002-7827-5034>

Google Scholar profile: <https://scholar.google.it/citations?user=ej4LzNgAAAAJ&hl=it>

Interest area: Animal Reproduction - Laboratory Animal Research - Laboratory Medicine - Physiology - Swine Medicine - Wildlife

## Editorial board

**Suresh H. Basagoudanavar** - FMD Vaccine Research Laboratory, Indian Veterinary Research Institute, Bangalore- 560024, Karnataka, India

<https://orcid.org/0000-0001-7714-3120>

ResearchGate profile: <https://www.researchgate.net/profile/Suresh-Basagoudanavar>

Interest area: Biotechnology - Immunology - Virology

**Gyanendra Gongal** - Senior Public Health Officer (Food safety, zoonoses and One Health). World Health Emergency Programme, WHO Regional Office for south East Asia, New Delhi, India

<https://orcid.org/0000-0002-6539-7569> Google Scholar profile:

<https://scholar.google.com/citations?user=XNCypDcAAAAJ&hl=en>

Interest area: Public Health - Zoonoses - One Health



**Md. Tanvir Rahman** - Department of Microbiology and Hygiene, Faculty of Veterinary Science, Bangladesh Agricultural University, Mymensingh-2202, Bangladesh

<https://orcid.org/0000-0001-5432-480X>

Google Scholar profile: <https://scholar.google.com/citations?user=vp6xgh0AAAAJ&hl=en>

Interest area: Antimicrobial resistance - Virulence-Food hygiene- Public Health - Vaccine - One Health

**Fouad Kasim Mohammad** - Professor Emeritus, Pharmacology & Toxicology, College of Veterinary Medicine, University of Mosul, Mosul, Iraq

Google Scholar profile: <https://scholar.google.com/citations?user=zgCIA4UAAAAJ&hl=en>

Interest area: Pharmacology - Toxicology

**Joao Simoes** - Universidade de Tras-os-Montes e Alto Douro, Vila Real, Portugal

<https://orcid.org/0000-0002-4997-3933>

Google Scholar profile: <https://scholar.google.com/citations?user=ftLFW-sAAAAJ&hl=en>

Interest area: Large Animal Medicine - Mastitis - Reproductive medicine - Veterinary Medicine

**Abdelaziz ED-DRA** - Department of Biology, Faculty of Science, Moulay Ismail University, BP. 11201 Zitoune, Meknes, Morocco

<https://orcid.org/0000-0003-3273-1767>

Google Scholar profile: <https://scholar.google.com/citations?user=ftL-1V0AAAAJ&hl=en>

Interest area: Antimicrobial resistance - Clinical Microbiology - Food - Food/Meat Hygiene - Polymerase Chain Reaction

**Filippo Giarratana** - Department of Veterinary Medicine, University of Messina, Polo Universitario dell'Annunziata, 98168 Messina, Italy

<https://orcid.org/0000-0003-0892-4884>

Google Scholar profile: <https://scholar.google.com/citations?user=lut-WbIAAAAAJ&hl=it>

Interest area: Antimicrobial resistance - Bacteriology - Food/Meat Hygiene - Plant Science - Essential oils

**Eduardo Jorge Boeri** - Institute of Zoonosis Luis Pasteur, Buenos Aires, Argentina

<https://orcid.org/0000-0001-8535-0306>

Google Scholar profile: [https://scholar.google.com/citations?user=aerl\\_4oAAAAJ&hl=en&oi=sra](https://scholar.google.com/citations?user=aerl_4oAAAAJ&hl=en&oi=sra)

Interest area: Brucellosis - Microbiology - Veterinary Medicine - Veterinary Public Health - Zoonoses

**Kumar Venkitanarayanan** - Graduate Programs Chair, Honors and Pre-Vet Programs Advisor, Department of Animal Science, University of Connecticut, Storrs, CT 06269, USA

Google Scholar profile: <https://scholar.google.com/citations?hl=en&user=Nr9CY28AAAAJ>

Interest area: Bacteriology - Clinical Microbiology - Infectious Diseases - Veterinary Medicine

**Karim El-Sabrouh** - Poultry Production Department, Alexandria University, Alexandria, Egypt

<https://orcid.org/0000-0003-2762-2363>

Google Scholar profile: <https://scholar.google.com/citations?hl=en&user=q-1jH8AAAAAJ>

Interest area: Poultry Husbandry

**Ali Aygun** - Selçuk University, Agriculture Faculty, Department of Animal Science, Konya, TURKEY

<https://orcid.org/0000-0002-0546-3034>

Google Scholar profile: <https://scholar.google.com/citations?hl=en&user=nZsp5iAAAAAJ>

Interest area: Poultry Husbandry - Poultry Medicine

**Ionel D. Bondoc** - Associate Professor, Department of Public Health, Faculty of Veterinary Medicine Iasi, University of Life Sciences "Ion Ionescu de la Brad" Iasi, Romania

<https://orcid.org/0000-0002-5958-7649>

Google Scholar profile: <https://scholar.google.ro/citations?user=-dUf6oYAAAAAJ&hl=ro>

Publons Profile: <https://publons.com/researcher/741287/ionel-bondoc/>

Interest area: Dairy Science - Epidemiology - Food Science - Food Technology - Food Law - One Health - Parasitology - Meat Inspection - Pathogens - Foodborne Diseases - Food Toxicology - Veterinary Public Health - Wildlife Diseases - Zoonoses

**Liliana Aguilar-Marcelino** - National Center for Disciplinary Research in Animal Health and Safety, National Institute for Agricultural and Livestock Forestry Research, Mexico

<https://orcid.org/0000-0002-8944-5430>

Google Scholar profile: <https://scholar.google.ro/citations?hl=ro&user=ZbMMp-UAAAAAJ>

Interest area: Biology - Ethnoveterinary - Parasitology - Veterinary Medicine - Veterinary Public Health

**Anut Chantiratikul** - Department of Agricultural Technology, Faculty of Technology, Mahasarakham University, Muang, Mahasarakham Province 44150 Thailand

<https://orcid.org/0000-0002-8313-5802>

Google Scholar profile: <https://scholar.google.ro/citations?hl=ro&user=QogjWpgAAAAAJ>

Interest area: Biology - Animal Nutrition

**Nuh Kilic** - Department of Surgery, Faculty of Veterinary Medicine, Adnan Menderes University, Turkey

<https://orcid.org/0000-0001-8452-161X>

Google Scholar profile: <https://scholar.google.ro/citations?hl=ro&user=APVrx1cAAAAAJ>

Interest area: Large Animal Medicine - Surgery - Veterinary Medicine

**Hanna Markiewicz** - Milk Examination Laboratory, Kazimierz Wielki University in Bydgoszcz, Poland

<https://orcid.org/0000-0001-8225-0481>

ResearchGate profile: <https://www.researchgate.net/scientific-contributions/H-Markiewicz-10381112>

Interest area: Large Animal Medicine - Mastitis

**N. De Briyne** - Federation of Veterinarians of Europe, Brussels, Belgium

<https://orcid.org/0000-0002-2348-930X>

Google Scholar profile: <https://scholar.google.ro/citations?>



hl=ro&user=BOhfORAAAAAJ

Interest area: Animal Science - Antimicrobial resistance

**Hasan Meydan** - Akdeniz University, Faculty of Agriculture, Antalya, Turkey

<https://orcid.org/0000-0003-4681-2525>

Google Scholar profile: [https://scholar.google.ro/citations?](https://scholar.google.ro/citations?hl=ro&user=T2uHga0AAAAJ)

hl=ro&user=T2uHga0AAAAJ

Interest area: Biotechnology - Genetics - Veterinary Medicine

**Suleyman Cilek** - Kirikkale Universitesi, Kirikkale, kirikkale, Turkey

<https://orcid.org/0000-0002-2352-649X>

ResearchGate profile: <https://www.researchgate.net/scientific-contributions/Suleyman-Cilek-2092525513>

Interest area: Animal Nutrition - Animal Nutrition - Animal Reproduction - Animal Reproduction - Animal Reproduction - Breeding - Cattle Husbandry - Cattle/buffalo management - Equine Medicine - Genetics - Livestock Management - Mastitis - Molecular Genetics - Poultry Husbandry - Poultry Husbandry - Sheep Husbandry - Sheep Husbandry - Small Animal Medicine - Swine Husbandry - Veterinary Medicine

**Rodrigo Alberto Jerez Ebensperger** - University of Zaragoza, Spain

Interest area: Animal Reproduction - Artificial Insemination - Biotechnology -

Breeding - Embryo Transfer Technology - Equine Medicine - Large Animal Medicine - Livestock Management - Small Animal Medicine - Veterinary Medicine - Wildlife

**Parag Nigam** - Department of Wildlife Health Management, Wildlife Institute of India, Dehradun, India

ResearchGate profile: <https://www.researchgate.net/profile/Parag-Nigam>

Interest area: Veterinary Medicine - Veterinary Public Health - Wildlife - Zoonoses

**Alessandra Pelagalli** - Department of Advanced Biomedical Sciences, University of Naples Federico II, Italy

<https://orcid.org/0000-0002-1133-4300>

Google Scholar profile: [https://scholar.google.ro/citations?](https://scholar.google.ro/citations?hl=ro&user=T1iZqmMAAAAJ)

hl=ro&user=T1iZqmMAAAAJ

Interest area: Physiology

**Jamal Gharekhani** - Senior researcher, Iranian Veterinary Organization (IVO), Hamedan, Iran

<https://orcid.org/0000-0001-5882-8861>

Google Scholar profile: <https://scholar.google.ro/citations?hl=ro&user=vlhjoBEAAAAJ>

Interest area: Parasitology - Pathobiology - Veterinary Public Health

**Ipsita Mohanty** - Postdoctoral Research Fellow, Children's Hospital of Philadelphia Research Institute, (CHOP), Philadelphia

<https://orcid.org/0000-0003-0894-4770>

Google Scholar profile: [https://scholar.google.ro/citations?](https://scholar.google.ro/citations?hl=ro&user=anWIO7IAAAAJ)

hl=ro&user=anWIO7IAAAAJ

Interest area: Pharmacology - Toxicology - Physiology - Cardiology

**Alejandro Hidalgo** - Preclinical Science Department, Faculty of Medicine, Universidad de La Frontera, Temuco, Chile

<https://orcid.org/0000-0002-2247-4878>

Google Scholar profile: [https://scholar.google.ro/citations?](https://scholar.google.ro/citations?hl=ro&user=5vejgSAAAAAJ)

hl=ro&user=5vejgSAAAAAJ

Interest area: Zoonotic parasitic diseases - Parasite phylogeny - Zoology - Parasitology

**Hua-Ji Qiu** - Professor, Harbin Veterinary Research Institute (HVRI), Chinese Academy of Agricultural Sciences (CAAS), Harbin, Heilongjiang, 150069, P.R. China  
<https://orcid.org/0000-0003-4880-5687>

Profile:

[http://www.hvri.ac.cn/zzjg/cxtd/zlxzrbcxtd/sx\\_20180726100149743651/index.htm](http://www.hvri.ac.cn/zzjg/cxtd/zlxzrbcxtd/sx_20180726100149743651/index.htm)

Interest area: Classical swine fever - African swine fever - Pseudorabies - Innate and adaptive immunity - Virus-host interactions - Pathogenesis - Epidemiology - Vaccines - Diagnostic assays - Probiotics

**Hasria Alang** - Biology Lecturer at STKIP-PI Makassar, Makassar, Indonesia  
<https://orcid.org/0000-0001-9393-9575>

Google Scholar profile: [https://scholar.google.ro/citations?](https://scholar.google.ro/citations?hl=ro&user=NpwjancAAAAJ)

[hl=ro&user=NpwjancAAAAJ](https://scholar.google.ro/citations?hl=ro&user=NpwjancAAAAJ)

Interest area: Microbiology - Molecular Biology

**Belgin Siriken** - Professor, Department of Water Products Diseases, Faculty of Veterinary Medicine, Ondokuz Mayıs University, Kurupelit Campus, 55200 Samsun, Turkey

<https://orcid.org/0000-0002-5793-1792>

Google Scholar profile: [https://scholar.google.ro/citations?](https://scholar.google.ro/citations?hl=ro&user=JpuWvaUAAAAJ)

[hl=ro&user=JpuWvaUAAAAJ](https://scholar.google.ro/citations?hl=ro&user=JpuWvaUAAAAJ)

Interest area: Food - Food science - Food Technology - Food borne diseases - Antibiotic resistance - One Health - Veterinary Public Health

**Hussein Awad Hussein** - Professor of Internal Veterinary Medicine, Department of Animal Medicine, Faculty of Veterinary Medicine, Assiut University, Assiut 71526, Egypt

<https://orcid.org/0000-0003-0449-8283>

Google Scholar profile: <https://scholar.google.ro/citations?hl=ro&user=oJySPI8AAAAJ>

Interest area: Internal Medicine - Spectrophotometry - Ultrasonography - Parasitological analysis - Blood gas analysis - Metabolic profiling - Veterinary Medicine - Large Animal Medicine - Equine Medicine - Mastitis

**Tanko Polycarp Nwunuji** - Senior lecturer, Department of Veterinary Microbiology and Pathology, Faculty of Veterinary Medicine, University of Jos, Plateau State, Nigeria

<https://orcid.org/0000-0003-1459-2564>

Google Scholar profile: [https://scholar.google.ro/citations?](https://scholar.google.ro/citations?hl=ro&user=MD7ehVwAAAAJ)

[hl=ro&user=MD7ehVwAAAAJ](https://scholar.google.ro/citations?hl=ro&user=MD7ehVwAAAAJ)

Interest area: Clinical and Anatomic Pathology - Oncology - Fisheries with special interest in bacterial diseases of fishes and other diseases associated with aquaculture management - Diseases of small and large ruminants - Laboratory animal medicine - Diseases of Dogs, horses and pigs as well as non-infectious diseases such as Diabetes and stress-induced pathologies

**Md. Ahaduzzaman** - Associate Professor, Department of Medicine and Surgery, Faculty of Veterinary Medicine, Chittagong Veterinary and Animal Sciences University, Bangladesh

<https://orcid.org/0000-0002-0568-0506>

Google Scholar profile: [https://scholar.google.ro/citations?](https://scholar.google.ro/citations?hl=ro&user=u6x_8FkAAAAJ)

[hl=ro&user=u6x\\_8FkAAAAJ](https://scholar.google.ro/citations?hl=ro&user=u6x_8FkAAAAJ)

Interest area: Antimicrobial resistance - Infectious Diseases - Poultry Medicine - Veterinary Medicine - Veterinary Microbiology and Parasitology - Veterinary Public Health - Veterinary Science - Meta-analysis - Phylogenetic analysis



**Vanessa S. Cruz** - Professor, Department of Veterinary Medicine, Catholic University Center of East Minas (Unileste), Avenue President Tancredo de Almeida Neves, 3500, University District, Coronel Fabriciano - MG, Brazil  
<https://orcid.org/0000-0002-8914-5964>  
Profile: <http://lattes.cnpq.br/8788967925940484>  
Interest area: Cancer - Molecular Biology - Veterinary Medicine - Veterinary Pathology - Small Animal Clinic and Surgery (oncology, geriatrics, breeding and behavior of dogs and cats)

**R.Umaya Suganthi** - Principal Scientist, ICAR-National Institute of Animal Nutrition and Physiology (ICAR-NIANP), Government of India, Bangalore 560 030, Karnataka, India  
<https://orcid.org/0000-0002-7710-6271>  
Google Scholar Profile: <https://scholar.google.co.in/citations?user=6VEZ7XMAAAAJ&hl=en>  
Interest area: Antimicrobial resistance - Antibiotic growth promoters in poultry and their alternatives - Phytochemicals - Oxidative stress and antioxidants - Mycotoxin toxicity and amelioration - Selenium and selenoproteins

Last updated on 23-03-2022

## Site Links

---

Editorial board (<http://www.veterinaryworld.org/editorial.html>)

Instruction for authors  
(<http://www.veterinaryworld.org/manuscript.html>)

Author declaration certificate  
([http://www.veterinaryworld.org/author declaration certificate.pdf](http://www.veterinaryworld.org/author%20declaration%20certificate.pdf))

Tutorial for online submission  
([http://my.ejmanager.com/scopemed\\_tutorial\\_authors.pdf](http://my.ejmanager.com/scopemed_tutorial_authors.pdf))

Manuscript template  
(<http://www.veterinaryworld.org/Manuscripttemplate.pdf>)

Submit your manuscript (<http://my.ejmanager.com/vetworld/>)

FAQ (<http://www.veterinaryworld.org/FAQ.html>)

Reviewer guidelines ([http://www.veterinaryworld.org/Reviewer guideline.pdf](http://www.veterinaryworld.org/Reviewer%20guideline.pdf))

Open access policy (<http://www.veterinaryworld.org/subscription.html>)

Most cited articles (<http://scholar.google.co.in/citations?hl=en&authuser=1&user=vWiG7DoAAAAJ>)

Archive (<http://www.veterinaryworld.org/tableofcontent.html>)

## Editorial Office

---

Veterinary World Star, Gulshan Park, NH-8A, Chandrapur Road,  
Wankaner - 363621, Dist. Morbi (Gujarat), India

E-mail: [editorveterinaryworld@gmail.com](mailto:editorveterinaryworld@gmail.com)

Website: [www.veterinaryworld.org](http://www.veterinaryworld.org)

## Editor-in-Chief

---

Dr. Anjum V. Sherasiya

E-mail: [editorveterinaryworld@gmail.com](mailto:editorveterinaryworld@gmail.com)



## Detection of *invA* gene of *Salmonella* from milkfish (*Chanos chanos*) at Sidoarjo wet fish market, Indonesia, using polymerase chain reaction technique

Sheila Marty Yanestria<sup>1</sup>, Reina Puspita Rahmaniar<sup>2</sup>, Freshinta Jellia Wibisono<sup>1</sup> and Mustofa Helmi Effendi<sup>3</sup>

1. Department of Veterinary Public Health, Faculty of Veterinary Medicine, Wijaya Kusuma University, Surabaya, Indonesia; 2. Department of Microbiology, Faculty of Veterinary Medicine, Wijaya Kusuma University, Surabaya, Indonesia; 3. Department of Veterinary Public Health, Faculty of Veterinary Medicine, Airlangga University, Surabaya, Indonesia.

**Corresponding author:** Mustofa Helmi Effendi, e-mail: mheffendi@yahoo.com

**Co-authors:** SMY: sheila.marty11.sm@gmail.com, RPR: puspita.reina@gmail.com, FJW: freshinta.uwks@gmail.com

**Received:** 03-09-2018, **Accepted:** 07-12-2018, **Published online:** 29-01-2019

**doi:** 10.14202/vetworld.2019.170-175 **How to cite this article:** Yanestria SM, Rahmaniar RP, Wibisono FJ, Effendi MH (2019) Detection of *invA* gene of *Salmonella* from milkfish (*Chanos chanos*) at Sidoarjo wet fish market, Indonesia, using polymerase chain reaction technique, *Veterinary World*, 12(1): 170-175.

### Abstract

**Aim:** The study aimed to detect the *invA* gene in *Salmonella* isolated from milkfish in the Sidoarjo wet fish market.

**Materials and Methods:** A total of 84 samples were prepared in enrichment media and isolated on the surface of *Salmonella* Shigella Agar. *Salmonella* growth produces transparent colonies with blackish color in the middle due to H<sub>2</sub>S gas formation. Samples were identified as *Salmonella* based on macroscopic colony morphology. Presumptive *Salmonella* sp. was put on Bismuth Sulfite Agar media. *Salmonella* was determined based on the results of the biochemical test that has been carried out using Microbact identification kits from negative gram staining.

**Results:** The results of this study indicate that 32 of 84 samples (38.09%) were *Salmonella* bacteria. Furthermore, the *invA* gene detection was carried out using the polymerase chain reaction technique. Electrophoresis results showed four positive samples contained *invA* gene with a length of 284 bp.

**Conclusion:** Results in this study indicate that contamination of milkfish with *Salmonella* needs strict hygienic measures to prevent their transmission to human.

**Keywords:** human health, *invA* gene, milkfish, polymerase chain reaction, *Salmonella*.

### Introduction

Indonesia is an agricultural country that has a large enough fishery potential. The amount of capture fisheries production in 2014 was 6.20 tons, an increase of 0.34 million tons from 2013 which was only 5.86 million tons. The amount of fish production from the aquaculture sector has also increased from year to year [1]. Some fish products contaminated with bacteria can cause a disease called foodborne disease. Foodborne disease or also called foodborne diarrheal disease is a zoonotic disease and is found throughout the world. Foodborne diarrheal disease is a disease transmitted by animal's carriers that are healthy to humans through food contamination [2].

One of the bacteria that cause foodborne disease is *Salmonella* and is called salmonellosis. This disease is endemic in almost all major cities in Indonesia, and the incidence of typhoid fever caused by *Salmonella typhi* continues to increase with the incidence of 350-810 cases per 100,000 population

with a mortality rate of 2%. Typhoid fever is found throughout the year [3]. There are several transmission routes for salmonellosis, but the majority of human infections are derived from the consumption of contaminated foods, especially those of animal origin. Most cases of salmonellosis in fish start from consuming raw fish meat without first processing and cross-contamination [4]. The US Food Drug Administration reports data that *Salmonella* is the most common contaminant bacteria found in fish and fish products [5]. Established conventional methods to detect and identify *Salmonella* are time-consuming and include selective enrichment and plating followed by biochemical tests [6].

*Salmonella* detection can be done in various ways, one of which is using the polymerase chain reaction (PCR) technique. This technique can be used on very complex sample substances such as food and is able to work quickly and specifically. Due to the advantages, PCR is suitable to detect the presence of *Salmonella*. Detection of *Salmonella* using PCR can be done in a short time with high accuracy so that appropriate handling can be done on food [7]. The *invA* gene from *Salmonella* contains unique DNA sequences and is proven to be a PCR target gene suitable for *Salmonella* detection [8].

In this research, samples from milkfish were tested for isolation of *Salmonella*, by culturing and

Copyright: Yanestria, et al. Open Access. This article is distributed under the terms of the Creative Commons Attribution 4.0 International License (<http://creativecommons.org/licenses/by/4.0/>), which permits unrestricted use, distribution, and reproduction in any medium, provided you give appropriate credit to the original author(s) and the source, provide a link to the Creative Commons license, and indicate if changes were made. The Creative Commons Public Domain Dedication waiver (<http://creativecommons.org/publicdomain/zero/1.0/>) applies to the data made available in this article, unless otherwise stated.

biochemical method, and then, they were confirmed by *invA* gene-specific PCR methods.

## Materials and Methods

### Ethical approval

Fresh milkfish were used in this study; hence, ethical approval was not necessary. Milkfish samples were collected from Sidoarjo wet fish market.

### Salmonella culture method

Milkfish samples are cut with a sterilized knife. Grind the meat and digestive tract of the fish in a mortar with a stemper, then take 1 g and put it in 5 ml of selenite broth, and incubate it for 24 h at 37°C.

Bacterial isolation is carried out by taking bacterial suspensions with inoculating loop which is first sterilized using Bunsen fire. The suspension is then implanted in *Salmonella* Shigella Agar (SSA) which has been labeled according to the sample using the streak method to obtain a separate colony which is then incubated for 24 h in a temperature of 35-37°C. The growth of *Salmonella* produces transparent or colorless colonies with blackish color in the middle due to H<sub>2</sub>S gas formation [9]. Presumptive *Salmonella* is put on Bismuth Sulfite Agar (BSA) media. Bismuth sulfite is a selective medium for *Salmonella* isolation in the laboratory. BSA is a modification of Wilson and Blair Formula. Typhoid-causing organisms grow well in this medium, with the characteristics of black colonies. Gram-positive and other coliform bacteria are inhibited. These media are generally used for the detection of *Salmonella* species.

### Microscopic examination and biochemical test

Positive samples on BSA media were then given Gram staining to determine the type of Gram bacteria that grew. Positive results on Gram examination show that bacteria in the form of long and medium rods, red, Gram-negative bacteria spread perfectly without forming long chains or groups [10]. After Gram staining, the bacteria were tested with biochemical tests [11]. The *Salmonella* was determined based on the results of the biochemical test that has been carried out using Microbact identification kits from OXOID.

### DNA extraction

The initial step of PCR is DNA extraction of bacterial culture in *Salmonella* Shigella media to be extracted by boiling method. The boiling method was carried out for 10 min and centrifuged for 5 min at a speed of 6000 rpm. The supernatant is used for PCR amplification.

### PCR amplification

Detection of *Salmonella* invasive encoding gene was carried out using the PCR test. The reagents for PCR amplification consisted of 2.5 µl DNA template, 5 units of GoTaq DNA polymerase, 1 × GoTaq PCR reaction buffer (containing 1.5 mM MgCl<sub>2</sub>), 0.2 mM PCR nucleotide mix, and 0.6 µM DNA primers with a final volume of 50 µl. Specific primers used to detect *Salmonella* are primary forward (*invA*) GTG AAA TTA TCG CCA CGT TCG

GGC AA and primer reverse TCA TCG CAC CGT CAA AGG AAC C [12].

The PCR reagent mixture was then put in a thermocycler with an initial incubation of 94°C for 1 min, followed by 35 cycles consisting of 94°C for denaturation for 1 min, annealing at 58.3°C for 30 s, and 72°C elongation for 30 s followed by the final extension at 72°C for 7 min. Each of the 3 µl of amplification products was mixed with 3 µl of loading solution until well mixed.

### Electrophoresis of PCR products

The results of PCR product amplification were electrophoresis in 1.5% agarose gel and stained with ethidium bromide. Markers are also inserted into the agarose gel well to determine the DNA size of the PCR product; then, electrophoresis is run for 40 min with a constant voltage of 100 v. Electrophoresis results were observed under ultraviolet light. The results obtained are DNA band patterns (DNA bands) which show different numbers and patterns. 100 bp DNA ladder was used as a marker.

### Sensitivity and specificity of PCR [13]

PCR assay was evaluated in various concentration of DNA and various concentration of viable *Salmonella* Typhimurium for analyzing sensitivity of PCR. For sensitivity test based on DNA concentration, DNA extract was sequentially diluted ten-folds and based on the viable bacterial count, *S. Typhimurium* was sequentially diluted from 10<sup>9</sup> to 1 colony-forming unit/mL, and DNA was extracted from each dilution. DNA extracted from *Staphylococcus aureus* was used as negative control, in each PCR run. The PCR products were visualized by electrophoresis and observed as described above. The minimum concentration of DNA giving a positive signal was recorded. The specificity of PCR was evaluated by comparing with six different *Salmonella* serovars and cross-tested with 5 non-*Salmonella* isolates, i.e., *Escherichia coli*, *Listeria monocytogenes*, *Proteus mirabilis*, *S. aureus*, and *Vibrio parahaemolyticus* [13].

## Results and Discussion

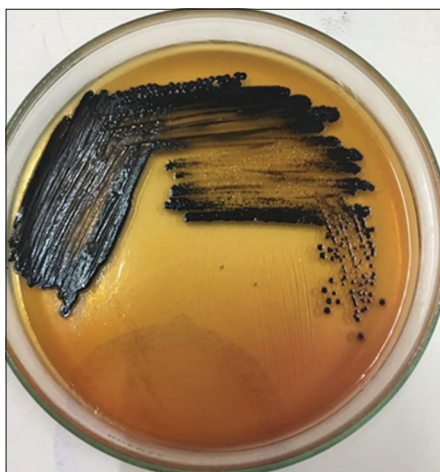
### Results of Salmonella culture and identification

Testing on SSA media is done by macroscopic observation. On macroscopic examination, *Salmonella* growth produces transparent or colorless colonies with blackish color in the middle due to H<sub>2</sub>S gas formation (Figure-1). Macroscopic colony examination results on SSA media same on BSA media that showed 32 positive samples from 84 samples (38.09%) (Figure-2) and is shown in Table-1. These results were determined as *Salmonella* on Gram staining (Figure-3) and biochemical test (Figure-4).

### Detection of encoding gene Salmonella

The results of detection of *Salmonella* invasive encoding genes performed using PCR tests shown in Figure-5, which shows positive *Salmonella invA* genes at 284 bp, and *Salmonella* which did not have *invA* genes (Figure-6).

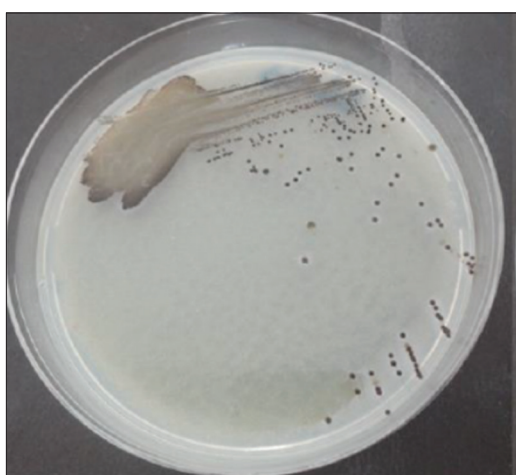




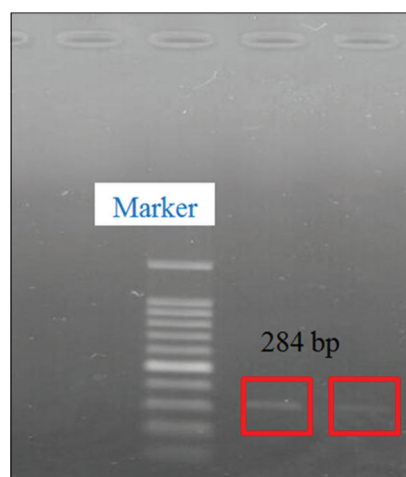
**Figure-1:** Result of *Salmonella* bacterial culture on *Salmonella* Shigella Agar media.



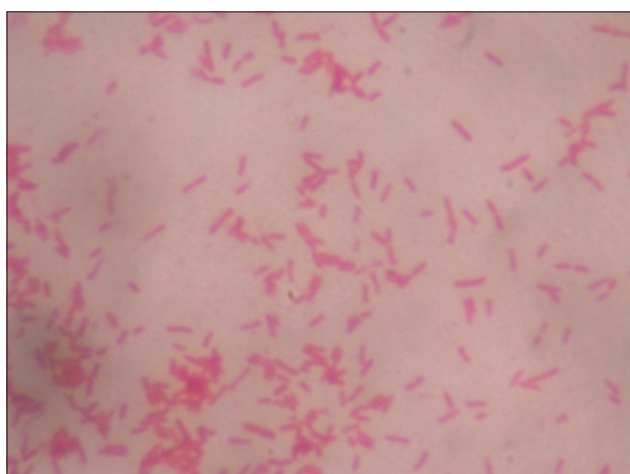
**Figure-4:** Positive *Salmonella* on biochemical test results using Microbact identification kits (arrows indicate positive *Salmonella*).



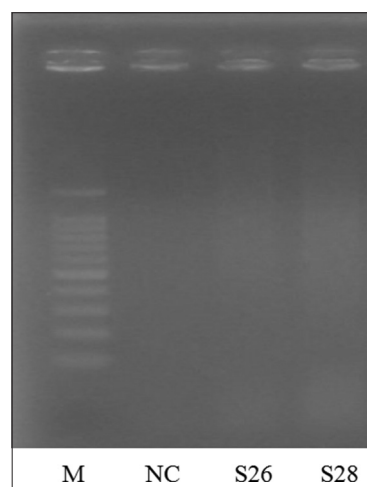
**Figure-2:** Result of *Salmonella* on Bismuth Sulfite Agar media.



**Figure-5:** Results of detection of *invA* gene encoding *Salmonella* on milkfish.



**Figure-3:** Microscopic examination result of *Salmonella* with negative Gram staining.



**Figure-6:** DNA visualization of *invA* gene *Salmonella* amplification products on a 1.5% agarose gel (tris-borate-ethylenediaminetetraacetic acid). Lane M=DNA marker 100 bp ladder, lane NC=*S. aureus* DNA as a negative control, lane S26; S28 positive *Salmonella* without positive result of *invA* gene *Salmonella*.

*Salmonella* infection is a major bacterial disease in fishes, poultry, and humans, causing significant economic loss and illnesses [10,14,15]. Out of 84 samples, we isolated 32/84 (38.09%) of *Salmonella* by conventional culture method, and out of 32 positive *Salmonella*, we confirmed by PCR 4/32 (12.5%).

Based on the results of PCR, there were 4 samples from 32 samples of *Salmonella* isolates which

detected an *invA* gene with a length of 284 bp, while 28 samples did not show the target band. The absence of target bands in 28 samples showed that the strains of *Salmonella* bacteria obtained were not invasive or might also use other invasive mechanisms [16]. The use of certain PCR methods from *InvA* gene in most diagnostic and research laboratories is possible, and through molecular identification techniques of *Salmonella*, this method is the simplest and cheaper method [6].

At present, *Salmonella* is detected by standards bacteriological, biochemical, and serological techniques. These techniques are generally time-consuming, tedious, and expensive [17]. This research also corroborates some of the previous work carried out using the PCR method, in which non-typhoidal *Salmonella* was isolated from animals, food, and samples of human excrement in developing countries [18]. The observed prevalence of invasive *Salmonella* genes from poultry and poultry products is different from some other studies, which report a higher prevalence [6]. This variation may be due to differences in research methodology; gene-specific involvement, sample type, sample size and hygiene practices on the farm, and geographical location. *Salmonella* is known to infect animal products by various species; however, one serovar may be dominant in location for many years before being replaced by another. The most common and clinically significant serovar containing the *invA* virulence gene that causes salmonellosis globally is *S. Typhimurium* and *Salmonella enteritidis* [19].

Molecular methods are increasingly important in detecting and typing *Salmonella*. Tests are published with the aim of replacing traditional serotyping with direct detection of various genes [20]. PCR examination technique with the *invA* gene is very sensitive and specific in detecting *Salmonella*. Detection of *Salmonella*-specific by PCR with primers for *invA* gene is fast, sensitive, and specific to detect *Salmonella* in many clinical samples [21]. This research supports the ability of this specific primer set to confirm isolates as *Salmonella*. The *invA* gene contains sequences specific to the genus *Salmonella* and is considered the international standard for its characterization [16].

The *invA* gene is indeed targeted for the diagnosis of *Salmonella* organisms at the genus level [22]. *Salmonella*-specific primers' ability to detect *Salmonella* species quickly and accurately in this study is mainly due to the primers sequence selected from the invasion of the *S. Typhimurium* gene as previously reported by Darwin and Miller [23]. This is also consistent with research conducted by Pererat and Murray [24] that the results of PCR on various serotypes of *Salmonella* showed positive results, while PCR results on non-*Salmonella* strains such as *E. coli*, *Klebsiella*, *Proteus*, and *Shigella* were negative for the *invA* gene.

**Table-1:** Results of *Salmonella* isolation and *invA* gene detection.

	Milkfish samples	<i>Salmonella</i>	<i>invA</i> gene
Total number	84	32	4

First step in the intracellular pathogenicity cycle of *Salmonella* is the invasion of intestinal epithelial cells, and this step is controlled by the *invA* gene. The *invA* gene encodes proteins in bacterial cell membranes that are needed for invasion into host epithelial cells [23,25]. This gene is located in pathogenicity island I or referred to as *Salmonella* Pathogenicity Island (SPI); the DNA region is related to the pathogenicity of *Salmonella enterica* and is owned by all serotypes [26]. SPI serves to add complex virulence by bacteria to the infected host [24].

Many invasion genes encoded in SPI I and their expression are activated by the *HilA* gene; transcription factors are also encoded in SPI I. In a study conducted by Murray and Lee [26] regarding the role of *Salmonella* invasion genes during infection in mice after intragastric inoculation, it was found that strains containing invasion genes that had mutations were found from intestinal tissue cells, and systemic tissue compared to strains that had not undergone previous mutation.

Galan *et al.* [27] also identified the *invA* gene as the first gene consisting of at least two additional invasion genes that are *Salmonella* to enter culture epithelial cells, but now there is an *invA* gene that has mutations. *S. Typhimurium invA* mutants are less capable of invading culture epithelial cells. *InvA* mutants do not alter the normal structure of the microvilli of epithelial cells and also do not cause changes in the distribution of actin microfilaments from cells. *InvA* mutants are significantly inhibited in their ability to enter cells, no emergence of invasive gene bands can also be caused by mutant genes that are unable to replicate on the intestinal mucosal surface, it can also be caused due to susceptibility to bactericidal host factors such as phagocytes. The invasion gene has been found in *Salmonella* with its ability to kill phagocytes *in vitro*.

With PCR, a single gene product can be strengthened in a single PCR reaction and in this study is shown as a rapid method for identifying one gene related to invasion virulence. Such early detection can have major benefits in public health, especially for rapid diagnosis and finding the ideal vaccine, epidemiological investigations, and prophylactic strategies for Salmonellosis in Sidoarjo, Indonesia. In summary, the findings from this study showed the distribution of *invA* gene (12.5%) in milkfish sources (Table-1). This requires planning and implementing control programs to prevent and control infections for spreading to public health.



## Conclusion

This study describes the prevalence of *Salmonella* contamination in the milkfish samples obtained from Sidoarjo wet fish market, Indonesia. The study found contamination of *Salmonella* in milkfish, indicating potential sources and routes of the *Salmonella* transmission in the fishery. Isolation of *Salmonella* carrying invasion gene (*InvA* gene) in this study could show poor sanitation of the environment in which milkfish are sold at wet fish market Sidoarjo, East Java Province, Indonesia.

## Authors' Contributions

MHE supervised the project. SMY was a project leader and RPR carried out bacterial isolation and molecular work. FJW collected the samples. All authors contributed in the drafting and revision of the manuscript. All authors read and approved the final manuscript.

## Acknowledgments

The authors would like to thank the Ministry of Research, Technology and Higher Education of Indonesia for providing research funds with grant number; 16/LPPM/UWKS/III/2018 for the research title: DETEKSI DAN KARAKTERISASI *Salmonella* spp. PADA IKAN BANDENG (*Chanos chanos*) DI TEMPAT PELELANGAN IKAN KABUPATEN SIDOARJO.

## Competing Interests

The authors declare that they have no competing interests.

## Publisher's Note

Veterinary World remains neutral with regard to jurisdictional claims in published institutional affiliation.

## References

- Ministry of Maritime Affairs and Fisheries. (2015) A Report on Trends In Coastal Marine Resources And Fisheries Management in Indonesia.
- Kakatkar, A., Gautam, S., Nagar, R.K., Karani, V. and Bandekar, J.R. (2010) Incidence of food-borne pathogens in freshwater fish from domestic markets of Mumbai. *Fish. Technol.*, 47(2): 195-200.
- Poeloengan, M., Komala, I. and Noor, S.M. (2014) Bahaya *Salmonella* Terhadap Kesehatan. Prosiding Lokakarya Nasional Penyakit Zoonosis, p216-224.
- Hassan, R., Teclé, S., Adcock, B., Kellis, M., Weiss, J., Saupe, A., Sorenson, A., Klos, R., Blankenship, J., Blessington, T., Whitlock, L., Carleton, H.A., Concepción Acevedo, J., Tolar, B., Wise, M. and Neil, K.P. (2018) Multistate outbreak of *Salmonella* Paratyphi B variant L(+) tartrate(+) and *Salmonella* Weltevreden infections linked to imported frozen raw Tuna – United States, 2015. *Epidemiol. Infect.*, 146(11): 1461-1467.
- Olgunoğlu, I. A. (2012) In: Mahmoud, B.S. M., editor. *Salmonella – A Dangerous Foodborne Pathogen*. Published by InTech, Janeza Trdine 9, 51000 Rijeka, Croatia. p 91-108.
- Shanmugasamy, M., Velayutham, T. and Rajeswar, J. (2011) *InvA* gene-specific PCR for detection of *Salmonella* from broilers. *Vet. World*, 4(12): 562-564.
- Prayoga, W., dan Wardani, A.K. (2015), Polymerase chain reaction for detection of *Salmonella* spp.: Literature review. *J. Pangan Agroindu.*, 3(2): 483-488.
- Abdel-Aziz, N.M. (2016) Detection of *Salmonella* species in chicken carcasses using genus-specific primer belong to *invA* gene in Sohag city, Egypt. *Vet. World*, 9(10): 1125-1128.
- Ibrahim, B. and Sheshi, M. (2014) Isolation and identification of bacteria associated with fresh and smoked fish (*Clarias gariepinus*) in Minna metropolis, Niger state, Nigeria. *J. Appl. Environ. Micro.*, 2(3): 81-85.
- Nidaullah, H., Abirami, N., Shamila-Syuhada, A.K., Chuah, L.O., Nurul, H., Tan, T.P., Zainal, A.F.W. and Rusul, G. (2017) Prevalence of *Salmonella* in poultry processing environments in wet markets in Penang and Perlis, Malaysia. *Vet. World*, 10(3): 286-292.
- Todar, K. (2005) *Salmonella* and Salmonellosis. Todar's Online Textbook of Bacteriology. © 2005 Kenneth Todar University of Wisconsin-Madison Department of Bacteriology, USA.
- Upadhyay, B.P., Utrarachkij, F., Thongshoob, J., Mahakunkijcharoen, Y., Wongchinda, N., Suthienkul, O. and Khusmith, S. (2010) Detection of *Salmonella invA* gene in shrimp enrichment culture by polymerase chain reaction. *Southeast Asian J. Trop. Med. Public Health*, 41(2): 426-435.
- Amalia, U., Dewanti-Hariyadi, R. and Poernomo, A. (2014) Rapid detection of *Salmonella* in shrimp by polymerase chain reaction. *J. Teknol. Ind. Pangan*, 25(1): 78-82.
- Bibi, F., Qaisrani, S.N., Ahmad, A.N., Akhtar, M., Khan, B.N. and Ali, Z. (2015), Occurrence of *Salmonella* in freshwater fishes: A review. *J. Anim. Plant Sci.*, 25(2): 303-310.
- Whiley, H. and Ross, K. (2015) *Salmonella* and eggs: From production to plate. *Int. J. Environ. Res. Public Health*, 12(3): 2543-2556.
- Malorny, B., Hoorfar, J., Bunge, C. and Helmuth, R. (2003) Multicenter validation of the analytical accuracy of *Salmonella* PCR: Towards an international standard. *Appl. Environ. Microbiol.*, 69(1): 290-296.
- Hernandez, T., Sierra, A., Rodriguez-Alvarez, C., Torres, A., Arevalo, M.P., Calvo, M. and Arias, A. (2005) *Salmonella* Enterica serotypes isolated from imported frozen chicken meat in Canary Islands. *J. Food Prot.*, 68(12): 2702-2706.
- Suwit, C., Suvichai, R., Fred, U., Pakpoom, T. and Prapas, P. (2014) Prevalence and antimicrobial resistance of *Salmonella* isolated from carcasses, processing facilities and the environment surrounding small scale poultry slaughterhouses in Thailand. *Southeast Asian J. Trop. Med. Public Health*, 45(6): 1392-1400.
- Rodriguez, J., Rondón, I. and Verjan, N. (2014) Serotypes of *Salmonella* in broiler carcasses marketed at Ibagué, Colombia. *Braz. J. Poult. Sci.*, 17(4): 545-552.
- Kardos, G., Farkas, T., Antal, M., Nógrády, N. and Kiss, I. (2007) Novel PCR assay for identification of *Salmonella* Enterica serovar infantis. *Lett. Appl. Microbiol.*, 45(4): 421-425.
- Lampel, K.A., Orlandi, P.A. and Kornegay, L. (2000) Improved template preparation for PCR-based assay for detection of food-borne bacterial pathogens. *Appl. Environ. Microbiol.*, 66(10): 4539-4542.
- Abdeltawab, A.A.E., Ahmed, A.M., Aisha, A.R., Fatma, H.I.E. and Mohammed, E.E.S.A. (2013) Detection of common (*invA*) gene in salmonellae isolated from poultry using polymerase chain reaction technique. *Benha Vet. Med. J.*, 25(2): 70-77.
- Darwin, K.H. and Miller, V.L. (1999) Molecular basis of the interaction of *Salmonella* with the intestinal mucosa. *Clin. Microbiol. Rev.*, 12(3): 405-428.
- Pererat, K. and Murray, A. (2008) Development of a PCR

- assay for the identification of *Salmonella* Enterica serovar Brandenburg. *J. Med. Microbiol.*, 57(3): 1223-1227.
25. Sharma, I. and Das, K. (2016) Detection of *invA* gene in isolated *Salmonella* from marketed Poultry. *J. Food Process Technol.*, 7(1): 3.
26. Murray, R.A. and Lee, C.A. (2000) Invasion genes are not required for *Salmonella enterica* serovar Typhimurium to breach the intestinal epithelium: Evidence that *Salmonella* pathogenicity island 1 has alternative functions during infections. *J. Infect. Immun.*, 68(9): 5050-5055.
27. Galan, J.E., Ginocchio, C. and Costeas, P. (1992) Molecular and functional characterization of the *Salmonella* invasion gene *invA*: Homology of *invA* to members of a new protein Family. *J. Bacteriol.*, 174(13): 4338-4349.

\*\*\*\*\*